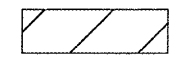

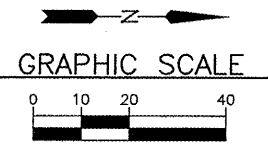


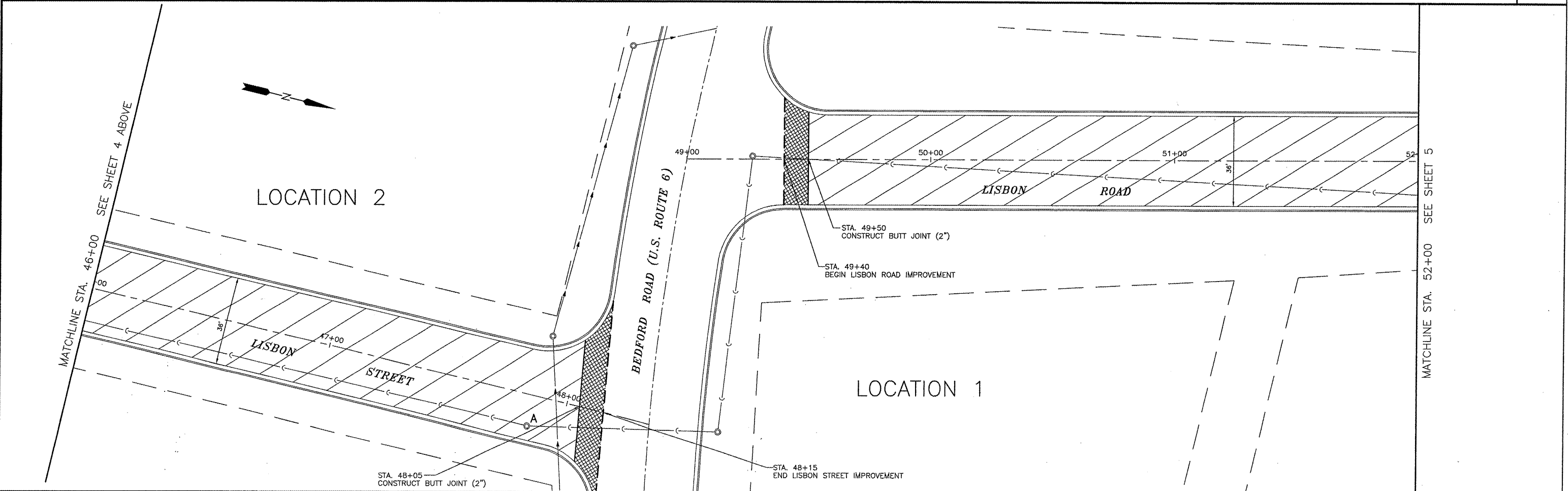
LEGEND

-  HOT-MIX ASPHALT SURFACE REMOVAL, 1 1/4" LEVELING BINDER (MACHINE METHOD) N50 HOT-MIX ASPHALT SURFACE COURSE, MIX "D" N50
-  BUTT JOINT CONSTRUCTION, 2"

LOCATION 2



MATCHLINE STA. 46+00 SEE SHEET 4 BELOW



LOCATION 2

LOCATION 1

MATCHLINE STA. 46+00 SEE SHEET 4 ABOVE

MATCHLINE STA. 52+00 SEE SHEET 5

DRAWN BY: MAB
CHECKED BY: RJS
DATE: 4/1/09

REVISIONS	
DATE	BY
5/12/09	MAB

CHAMLIN & ASSOCIATES
PERU MORRIS ILLINOIS

MORRIS ARRA PROJECT 2009
CITY OF MORRIS, GRUNDY COUNTY, ILLINOIS

LISBON STREET & LISBON ROAD
(FALL 5967 & FALL 5966)

SCALE: 1" = 20'
FILE NO.: 12883

SHEET 4
OF 12