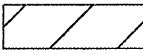
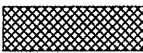


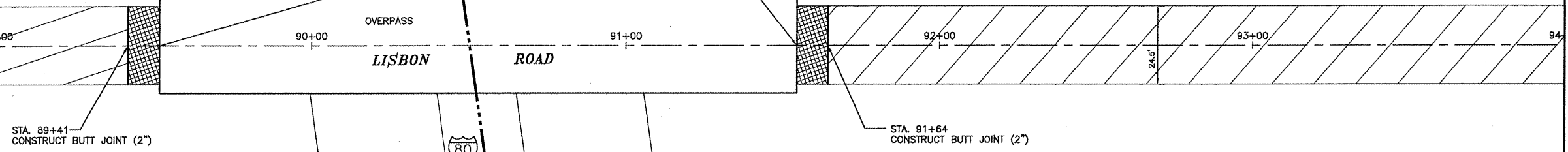
MATCHLINE STA. 88+00 SEE SHEET 7

MATCHLINE STA. 94+00 SEE SHEET 8 BELOW

### LEGEND

-  HOT-MIX ASPHALT SURFACE REMOVAL, 1 1/4" LEVELING BINDER (MACHINE METHOD) N50  
HOT-MIX ASPHALT SURFACE COURSE, MIX "D" N50
-  BUTT JOINT CONSTRUCTION, 2"

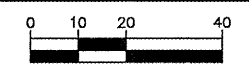
STRUCTURE NO. 032-0041  
I-80 OVERPASS OMISSION  
STA. 89+51 TO STA. 91+54



LOCATION 1

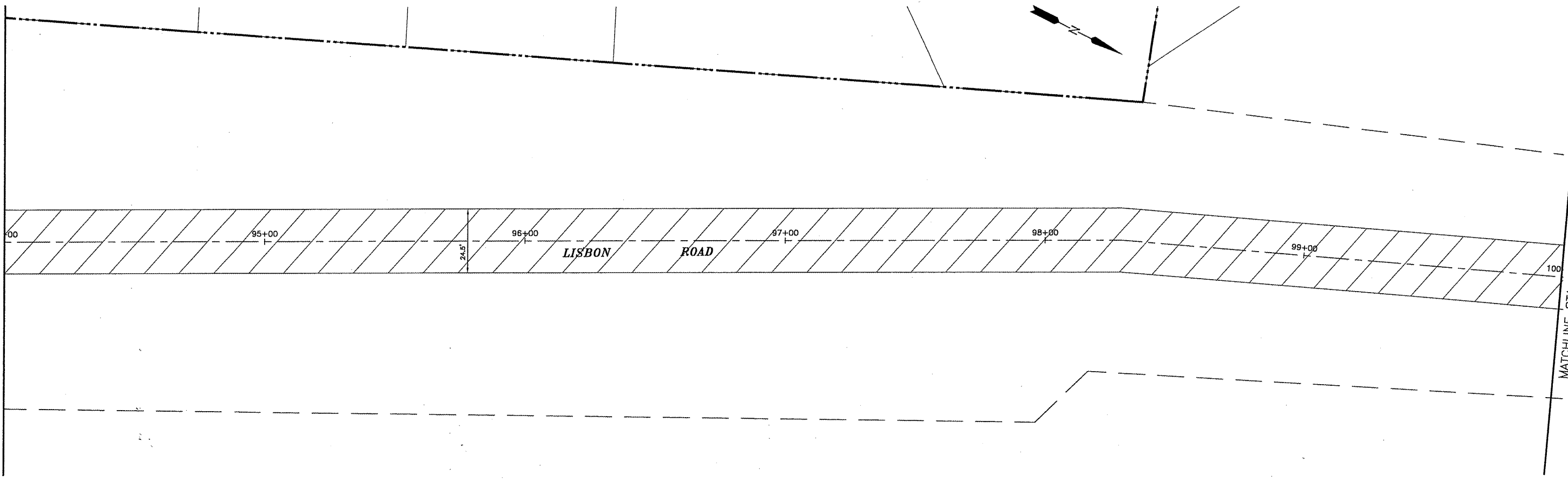


GRAPHIC SCALE



MATCHLINE STA. 94+00 SEE SHEET 8 ABOVE

MATCHLINE STA. 100+00 SEE SHEET 9



DRAWN BY: MAB  
 H:\A\09\6955-00  
 CAD/DWG: PPB  
 XREF: P-PLAN

CHECKED BY: RJS  
 DATE: 4/1/09

REVISIONS	
DATE	BY
5/12/09	MAB

**CHAMLIN & ASSOCIATES**

PERU MORRIS  
ILLINOIS

**MORRIS ARRA PROJECT 2009**  
 CITY OF MORRIS, GRUNDY COUNTY, ILLINOIS

**LISBON ROAD**  
 (FAU 5966)

SCALE: 1 = 20  
 SHEET 8  
 FILE NO.: 12883  
 OF 12