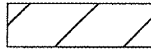



**LEGEND**

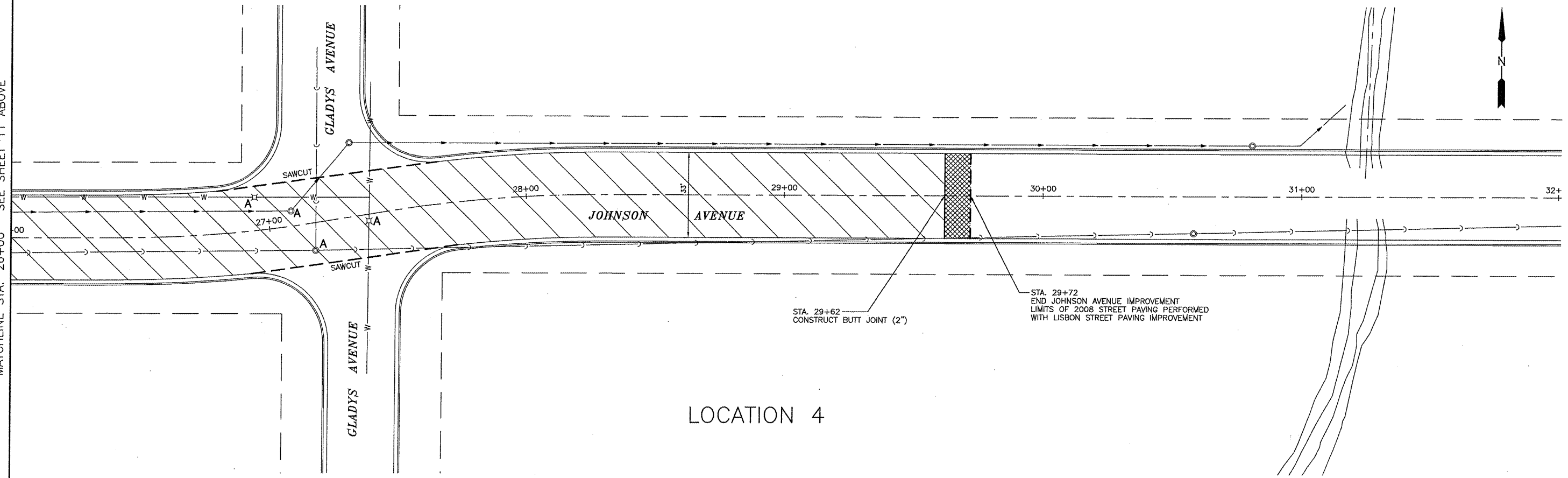
-  HOT-MIX ASPHALT SURFACE REMOVAL, 1 1/4" LEVELING BINDER (MACHINE METHOD) N50  
HOT-MIX ASPHALT SURFACE COURSE, MIX "D" N50
-  BUTT JOINT CONSTRUCTION, 2"

STA. 20+30  
CONSTRUCT BUTT JOINT (2")

STA. 20+20  
BEGIN JOHNSON AVENUE IMPROVEMENT

MATCHLINE STA. 26+00 SEE SHEET 11 BELOW

MATCHLINE STA. 26+00 SEE SHEET 11 ABOVE



**LOCATION 4**

STA. 29+72  
END JOHNSON AVENUE IMPROVEMENT  
LIMITS OF 2008 STREET PAVING PERFORMED  
WITH LISBON STREET PAVING IMPROVEMENT

STA. 29+62  
CONSTRUCT BUTT JOINT (2")

DRAWN BY: MAB	H:\A09\66952-00 CAD/DWG: PP11 XREF: P-PLAN
CHECKED BY: RJS	DATE: 4/27/09

REVISIONS	
DATE	BY
5/12/09	MAB

**CHAMLIN ASSOCIATES**

PERU MORRIS  
ILLINOIS

**MORRIS ARRA PROJECT 2009**  
CITY OF MORRIS, GRUNDY COUNTY, ILLINOIS

**JOHNSON AVENUE**  
(FAU 5954)

SCALE: 1 = 20	SHEET 11
FILE NO.: 12883	OF 12