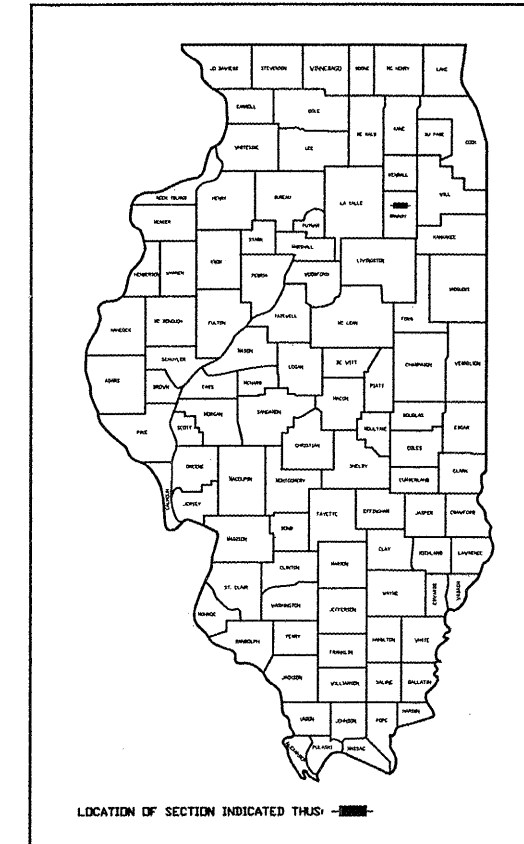


INDEX OF SHEETS

1	COVER SHEET AND INDEX OF SHEETS
2	SCHEDULE & SUMMARY OF QUANTITIES
3	GENERAL NOTES & TYPICAL SECTIONS
4-12	PROJECT PLANS

STATE OF ILLINOIS  
DEPARTMENT OF TRANSPORTATION  
PLANS FOR  
PROPOSED LOCAL AGENCY IMPROVEMENTS  
ARRA PROJECT

FAU 5953 (HIGH STREET)  
FAU 5954 (JOHNSON AVENUE)  
FAU 5962 (WASHINGTON STREET)  
FAU 5966 (LISBON ROAD)  
FAU 5967 (LISBON STREET)  
SECTION 09-00082-00-RS  
PROJECT NO. ARA-5047 (008)  
CITY OF MORRIS  
GRUNDY COUNTY  
JOB NO. C-93-156-09



DESIGN GUIDELINES = L.A.P.P.

HIGHWAY STANDARDS

000001-05	STANDARD SYMBOLS, ABBREVIATIONS AND PATTERNS
701501-05	URBAN LANE CLOSURE, 2L, 2W, UNDIVIDED
701901-01	TRAFFIC CONTROL DEVICES

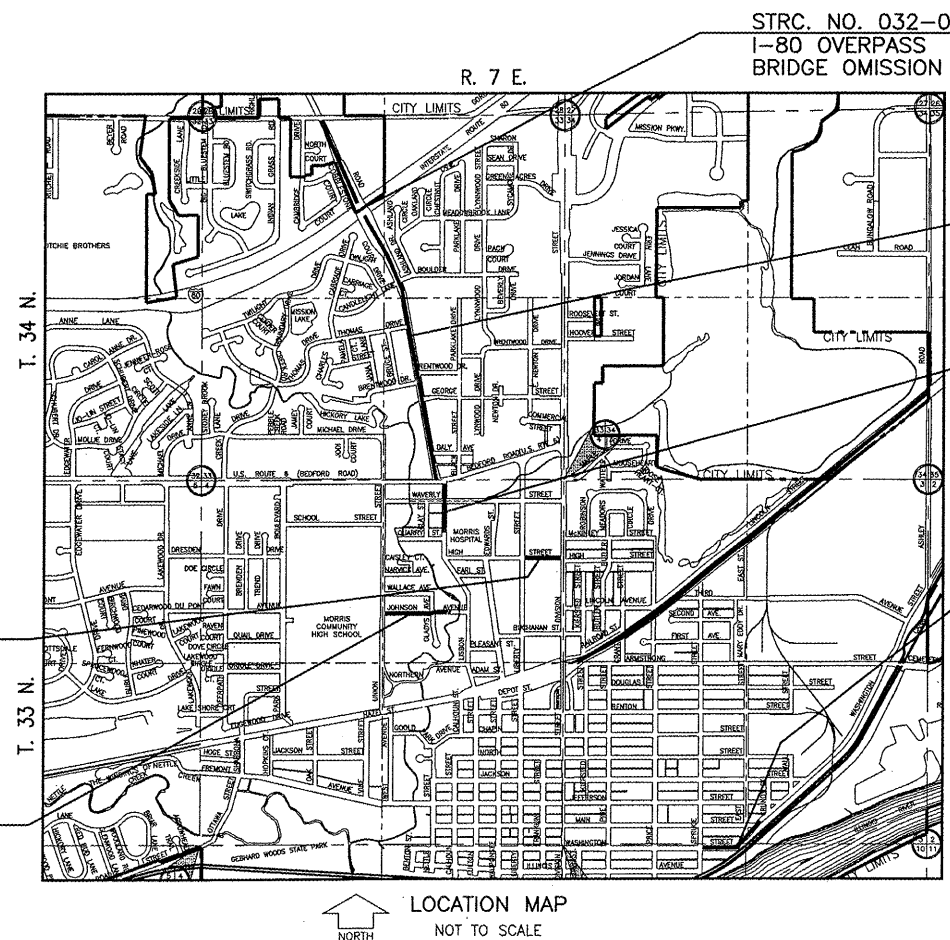
STREET NAME	FUNCTIONAL CLASSIFICATION	FAU ROUTE	DESIGN TRAFFIC	DESIGN SPEED
LISBON ROAD	MINOR ARTERIAL	5966	5,410 ADT	25 MPH
LISBON STREET	MINOR ARTERIAL	5967	4,390 ADT	25 MPH
HIGH STREET	COLLECTOR	5953	2,090 ADT	25 MPH
JOHNSON AVENUE	COLLECTOR	5954	1,020 ADT	25 MPH
WASHINGTON STREET	COLLECTOR	5962	1,685 ADT	25 MPH

CALL J.U.L.I.E.  
BEFORE YOU DIG  
800-892-0123  
TWP. 33 N. R. 7 E. SECTIONS 3, 4 & 10  
TWP. 34 N. R. 7 E. SECTION 33

SCALES: PLAN HORIZ. 1" = 20'

LOCATION 3  
HIGH STREET  
FAU 5953  
(SHEET 10)

LOCATION 4  
JOHNSON AVENUE  
FAU 5954  
(SHEET 11)



LOCATION MAP  
NORTH  
NOT TO SCALE

STRC. NO. 032-0041  
I-80 OVERPASS  
BRIDGE OMISSION

LOCATION 1  
LISBON ROAD  
FAU 5966  
(SHEETS 4-9)

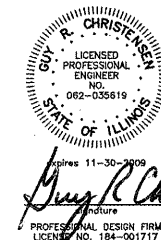
LOCATION 2  
LISBON STREET  
FAU 5967  
(SHEET 4)

LOCATION 5  
WASHINGTON STREET  
FAU 5962  
(SHEET 12) 5-15-09

APPROVED 5-15-09  
*Richard P. Kopp*  
MAYOR, CITY OF MORRIS

PASSED 05-21-09  
*Benjamin G. ...*  
DISTRICT 3 ENGINEER OF LOCAL ROADS & STREETS

RELEASING FOR BID  
BASED ON LIMITED  
REVIEW 05-21-09  
*George E. ...*  
DEPUTY DIRECTOR OF HIGHWAYS, REGION 2 ENGINEER



**SUMMARY OF QUANTITIES**

CODE NO.	DESCRIPTION	UNIT	TOTAL QUANTITY
*40600100	BITUMINOUS MATERIALS (PRIME COAT) RC-70	GAL.	3211
*40600300	AGGREGATE (PRIME COAT)	TON	54
*40600625	LEVELING BINDER (MACHINE METHOD) N50	TON	2268
*40603350	HOT MIX ASPHALT SURFACE COURSE, MIXTURE "D" N50	TON	2698
*44000154	HOT MIX ASPHALT SURFACE REMOVAL, 1 1/4" S.Y.	S.Y.	32113
*60255500	MANHOLES TO BE ADJUSTED	EACH	38
*60266600	VALVE BOXES TO BE ADJUSTED	EACH	7
67100100	MOBILIZATION	L.SUM	1
Δ *70300220	TEMPORARY PAVEMENT MARKING LINE, 4"	FOOT	900

\* DENOTES SPECIAL PROVISIONS  
CONSTRUCTION CODE 1000

**Δ SPECIALTY ITEMS**

**RESURFACING SCHEDULE**

STREET	FROM	TO	LENGTH (FT)	WIDTH (E-E)	PAVT. (SY)	HMA SURF REM 1 1/4" (SY)	BIT. MATLS. (PR CT) RC-70 (GAL)	AGG. (PR CT) (TON)	LEVEL BINDER (MACH METH) (TON)	HMA SURF. CSE., MIX "D" N50 (TON)	MH ADJ (EACH)	WV ADJ (EACH)
LISBON ROAD (FAU 5966)	US ROUTE 6 (BEDFORD ROAD)	BOULDER STREET	2,922	36	11,688	11,688	1,169	19	818	982	10	1
		BOULDER STREET	1,087	25	2,959	2,959	296	5	208	249		
		I-80 OVERPASS	877	25	2,387	2,387	239	4	168	201		
		877' NORTH/OVERPASS	184	30	613	613	61	1	43	51		
		1081' NORTH/OVERPASS	215	36	860	860	86	1	60	72		
		EAST RADIUS GORE ROAD	23	29	74	74	7		5	6		
		MAINLINE TOTALS	5,308		18,581	18,581	1,858	30	1,302	1,561	10	1
		INTERSECTIONS										
		DALEY	5	30	17	17	2		1	1		
		WEST BRENTWOOD	22	30	72	72	7		5	8		
		EAST BRENTWOOD	39	30	130	130	13		9	12		
		THOMAS	23	30	77	77	8		5	6		
		EAST BOULDER	21	34	79	79	8		5	6		
		WEST BOULDER (SOUTH LANE)	36	17	68	68	7		5	6		
		WEST BOULDER (NORTH LANE)	18	17	34	34	3		2	3		
		INTERSECTION TOTALS			477	477	48	1	32	40		
		LISBON ROAD TOTALS	5,308		19,058	19,058	1,906	31	1,334	1,601	10	1
LISBON STREET (FAU 5967)	QUARRY STREET	US ROUTE 6 (BEDFORD ROAD)	765	36	3,060	3,060	306	4	234	257	8	1
		INTERSECTIONS										
		WEST WAVERLY STREET	12	36	48	48	5	1	3	4		
		EAST WAVERLY STREET	23	36	92	92	9		7	8		
		LISBON STREET TOTALS	765		3,200	3,200	320	5	244	269	8	1
HIGH STREET (FAU 5953)	LIBERTY STREET	ILL. ROUTE 47 (DIVISION STREET) RADII	552	35	2,147	2,147	215	4	151	181	4	3
					63	63	6		4	5		
		HIGH STREET TOTAL	552		2,210	2,210	221	4	155	186	4	3
JOHNSON AVENUE (FAU 5954)	UNION STREET	250' WEST OF LISBON STREET RADII	952	33	3,490	3,490	349	7	244	293	5	2
					33	33	3		2	3		
		JOHNSON STREET TOTALS	952		3,523	3,523	352	7	246	296	5	2
WASHINGTON STREET (FAU 5962)	SPRUCE STREET	NORTH/MAIN STREET	925	37	3,803	3,803	380	7	267	319	11	0
		INTERSECTIONS										
		EAST STREET	83	31	286	286	29		20	24		
		MAIN STREET	10	30	33	33	3		2	3		
		WASHINGTON STREET TOTALS	925		4,122	4,122	412	7	289	346	11	0
		LISBON ROAD (FAU 5966) TOTALS			19,058	19,058	1,906	31	1,334	1,601	10	1
		LISBON STREET (FAU 5967) TOTALS			3,200	3,200	320	5	244	269	8	1
		HIGH STREET (FAU 5953) TOTALS			2,210	2,210	221	4	155	186	4	3
		JOHNSON AVENUE (FAU 5954) TOTALS			3,523	3,523	352	7	246	296	5	2
		WASHINGTON STREET (FAU 5962) TOTALS			4,122	4,122	412	7	289	346	11	0
		<b>GRAND TOTALS</b>	<b>8,502</b>		<b>32,113</b>	<b>32,113</b>	<b>3,211</b>	<b>54</b>	<b>2,268</b>	<b>2,698</b>	<b>38</b>	<b>7</b>

DRAWN BY: MAB  
CHECKED BY: RJS  
DATE: 4/1/09

REVISIONS	
DATE	BY
5/12/09	MAB
5/21/09	MEF

**CHAMBLIN ASSOCIATES**  
PERU MORRIS ILLINOIS

**MORRIS ARRA PROJECT 2009**  
CITY OF MORRIS, GRUNDY COUNTY, ILLINOIS

**SUMMARY OF QUANTITIES AND SCHEDULE**

SCALE: 1 = 20  
FILE NO.: 12883  
SHEET 2 OF 12

**GENERAL NOTES**

THE THICKNESS OF HMA SHOWN ON THE PLANS IS THE NOMINAL THICKNESS. DEVIATIONS FROM THE NOMINAL THICKNESS WILL BE PERMITTED WHEN SUCH DEVIATIONS OCCUR DUE TO IRREGULARITIES IN THE EXISTING SURFACE OR BASE ON WHICH THE HMA IS PLACED.

THE HMA SURFACE OF ALL PRIVATE ENTRANCES, COMMERCIAL ENTRANCES, AND SIDE ROADS SHALL BE MADE NEATLY, IN A WORKMANLIKE MANNER, AND SHALL ACCURATELY CONFORM TO THE SHAPES AND DIMENSIONS SHOWN ON THE PLAN DETAILS. IF REQUIRED BY THE ENGINEER, THE CONTRACTOR SHALL BE REQUIRED TO SAW CUT THE HMA SURFACE TO CONFORM TO THE SHAPES AND DIMENSIONS SHOWN ON THE PLAN DETAILS. THIS WORK SHALL BE INCLUDED IN THE COST OF THE HMA SURFACE

THE ENGINEER WILL BE THE SOLE JUDGE CONCERNING CURING TIME FOR THE VARIOUS HMA LIFTS.

FOR STABILIZATION, ALL TYPE III BARRICADES SHALL REQUIRE A MINIMUM OF FOUR SAND BAGS PER LEG.

THE CONTRACTOR WILL BE RESPONSIBLE FOR STAKING EXISTING NO PASSING ZONES SO THEY MAY BE RE-ESTABLISHED AFTER RESURFACING IS COMPLETED.

ON EXISTING PAVEMENT WHICH MAY BE SUPERELEVATED, THE NEW HMA PAVEMENT SHALL BE BUILT WITH THE SAME SUPERELEVATION UNLESS NEW SUPERELEVATION RATES ARE GIVEN ON THE PLANS.

ADDITIONAL LEVELING BINDER HAS BEEN ADDED TO THE QUANTITIES FOR CROWN CORRECTION WHERE REQUIRED.

ANY REFERENCE TO A STANDARD IN THESE PLANS SHALL BE INTERPRETED TO MEAN THE EDITION AS INDICATED BY THE SUBNUMBER SHOWN IN THE LIST OF STANDARDS INCLUDED IN THESE PLANS.

**COMMITMENTS**  
NONE

THE FOLLOWING RATES OF APPLICATION HAVE BEEN USED IN CALCULATING PLAN QUANTITIES:

GRANULAR MATERIALS	2.05 TONS / CU YD
BITUMINOUS MAT PRIME COAT	0.10 GAL / SQ YD OR 0.375 GAL / SQ YD
AGGREGATE PRIME COAT	0.002 TONS / SQ YD
HMA RESURFACING	112 LBS / SQ YD / IN
SHORT TERM PAVEMENT MARKING	10 FT / 100 FT OF APPLICATION

MEMBERS OF JULIE KNOWN TO BE WITHIN THE LIMITS OF THE IMPROVEMENT ARE:

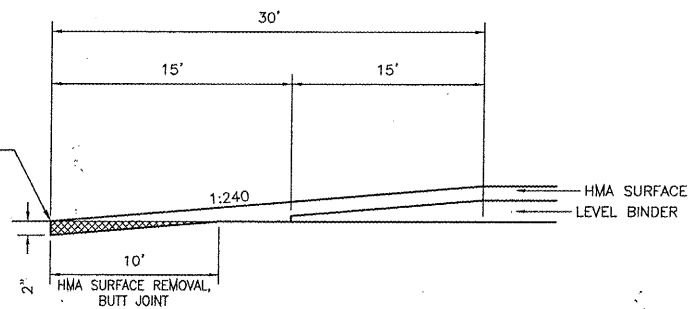
- A. T. & T. (SBC)
- COM ED
- NICOR GAS
- COMCAST
- MORRIS WATER & SEWER DEPARTMENT
- MORRIS FIRE PROTECTION DISTRICT

PG GRADE	HMA LEVEL BINDER	HMA SURFACE
PG 64-22	PG 64-22	PG 64-22
MAX % RAP ALLOWABLE **	25%	15%
DESIGN AIR VOIDS	4.0% @ N50	4.0% @ N50
MIXTURE COMPOSITION	IL 9.5	IL 9.5
FRICITION AGGREGATE		MIXTURE D
DENSITY TEST METHOD	CORRELATION	CORES

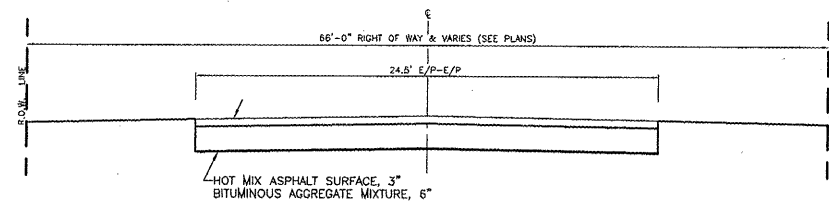
\* MATERIAL SHALL BE COMPACTED TO 93.0-97.4 PERCENT OF THE MAXIMUM THEORETICAL DENSITY, EXCEPT THAT WHEN PLACED AS FIRST LIFT ON AN UNIMPROVED SUBGRADE THE MINIMUM PERCENT COMPACTION SHALL BE 92.0 PERCENT. THE MAXIMUM THEORETICAL DENSITY SHALL BE DETERMINED FROM THE MOVING AVERAGE AS SPECIFIED IN THE QC/QA SPECIFICATION.

\*\* IF RAP OPTION IS SELECTED, THE ASPHALT CEMENT GRADE MAY NEED TO BE ADJUSTED. THIS WILL BE DETERMINED BY THE ENGINEER.

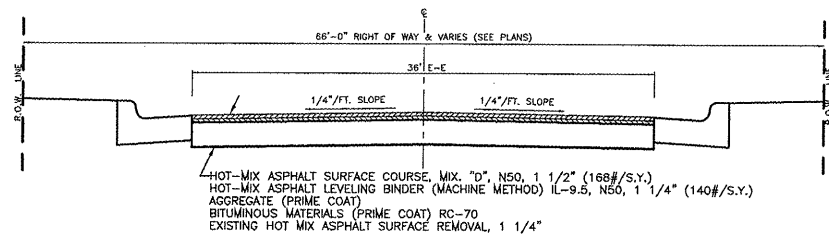
CONTRACTOR SHALL SAWCUT ALONG THE EDGE OF THE BUTT JOINT TO PROVIDE A VERTICAL EDGE AGAINST THE EXISTING PAVEMENT



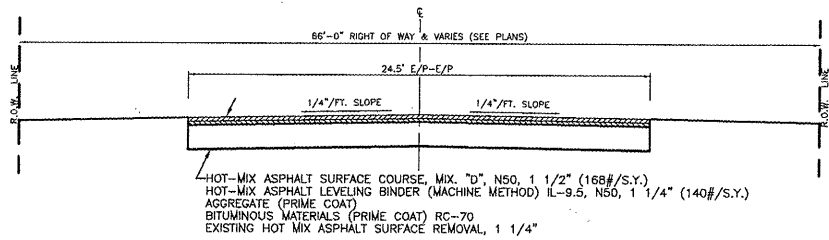
**BUTT JOINT DETAIL**  
TYPICAL AT ALL ENDS OF IMPROVEMENTS AND AT INTERSECTIONS AS SHOWN ON THE PLANS



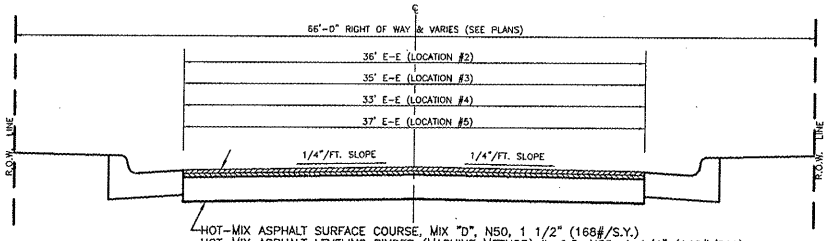
EXISTING  
**LOCATION #1 - LISBON ROAD (FAU 5966)**  
STA. 78+90 TO STA. 102+40  
(BRIDGE OMISSION STA. 89+51 TO STA. 91+54)



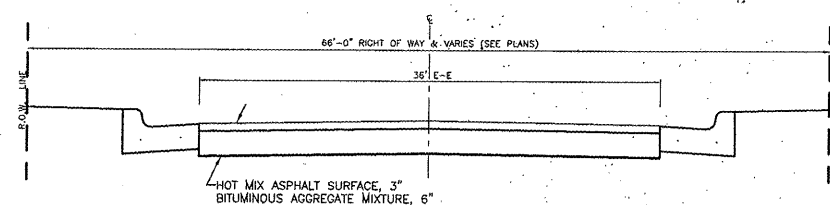
PROPOSED  
**LOCATION #1 - LISBON ROAD (FAU 5966)**  
STA. 49+00 TO STA. 78+90  
& STA. 102+40 TO STA. 104+55



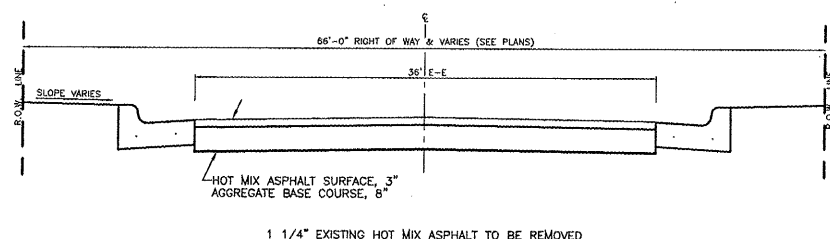
PROPOSED  
**LOCATION #1 - LISBON ROAD (FAU 5966)**  
STA. 78+90 TO STA. 102+40  
(BRIDGE OMISSION STA. 89+51 TO STA. 91+54)



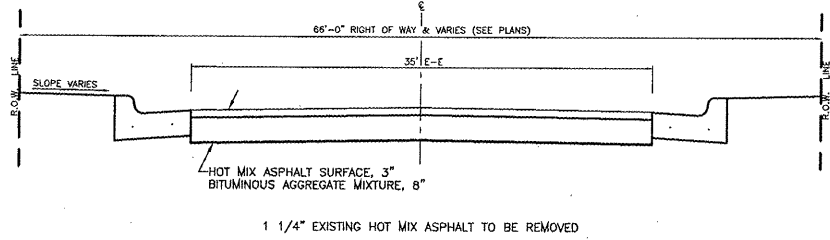
PROPOSED  
**LOCATION #2 - LISBON STREET (FAU 5967)**  
**LOCATION #3 - HIGH STREET (FAU 5953)**  
**LOCATION #4 - JOHNSON AVENUE (FAU 5954)**  
**LOCATION #5 - WASHINGTON STREET (FAU 5962)**



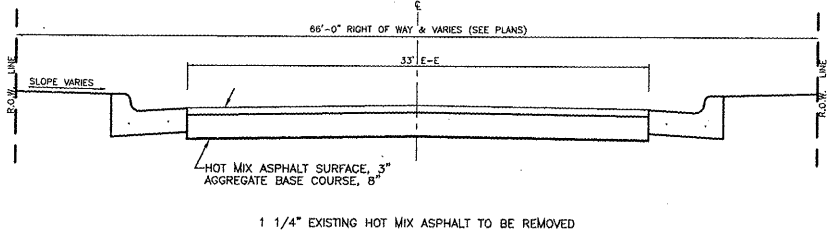
EXISTING  
**LOCATION #1 - LISBON ROAD (FAU 5966)**  
STA. 49+00 TO STA. 78+90  
& STA. 102+40 TO STA. 104+55



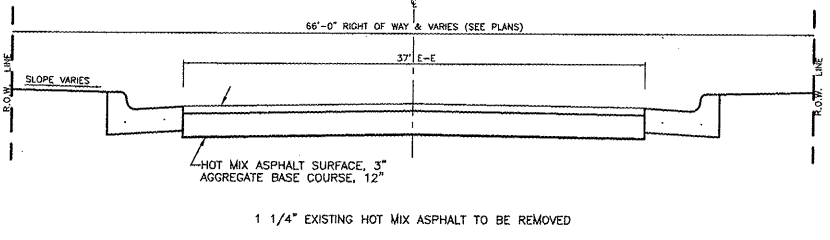
EXISTING  
**LOCATION #2 - LISBON STREET (FAU 5967)**



EXISTING  
**LOCATION #3 - HIGH STREET (FAU 5953)**



EXISTING  
**LOCATION #4 - JOHNSON AVENUE (FAU 5954)**



EXISTING  
**LOCATION #5 - WASHINGTON STREET (FAU 5962)**

DRAWN BY: MAB  
CHECKED BY: RJS  
DATE: 4/1/09

DATE	BY
5/12/09	MAB
5/21/09	MEF

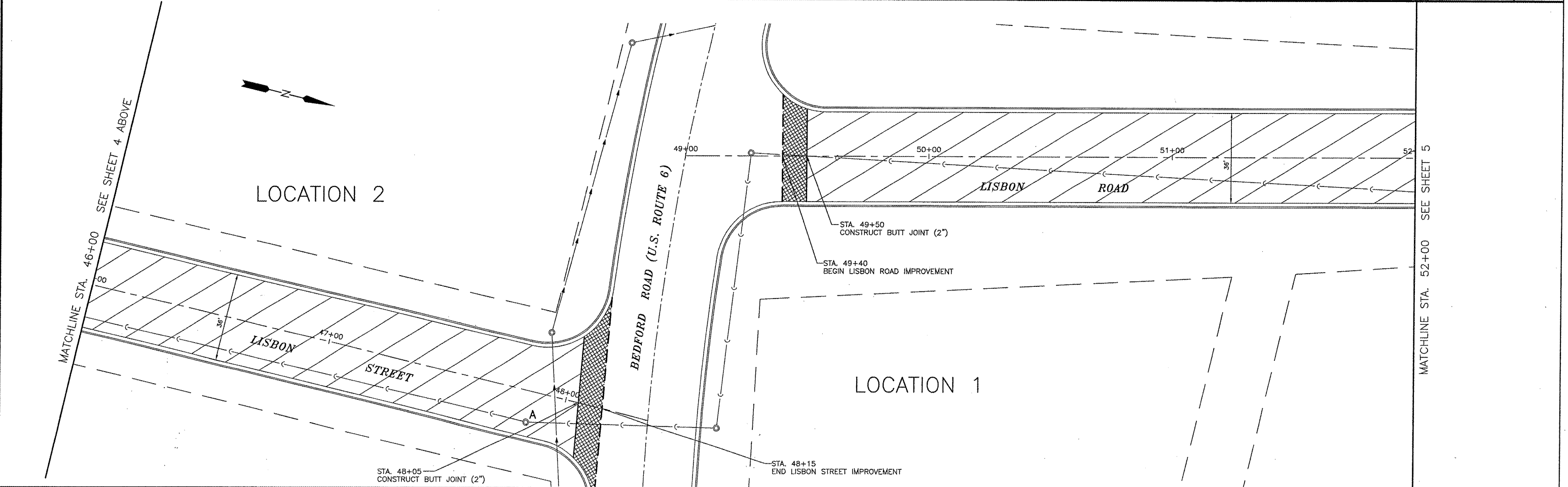
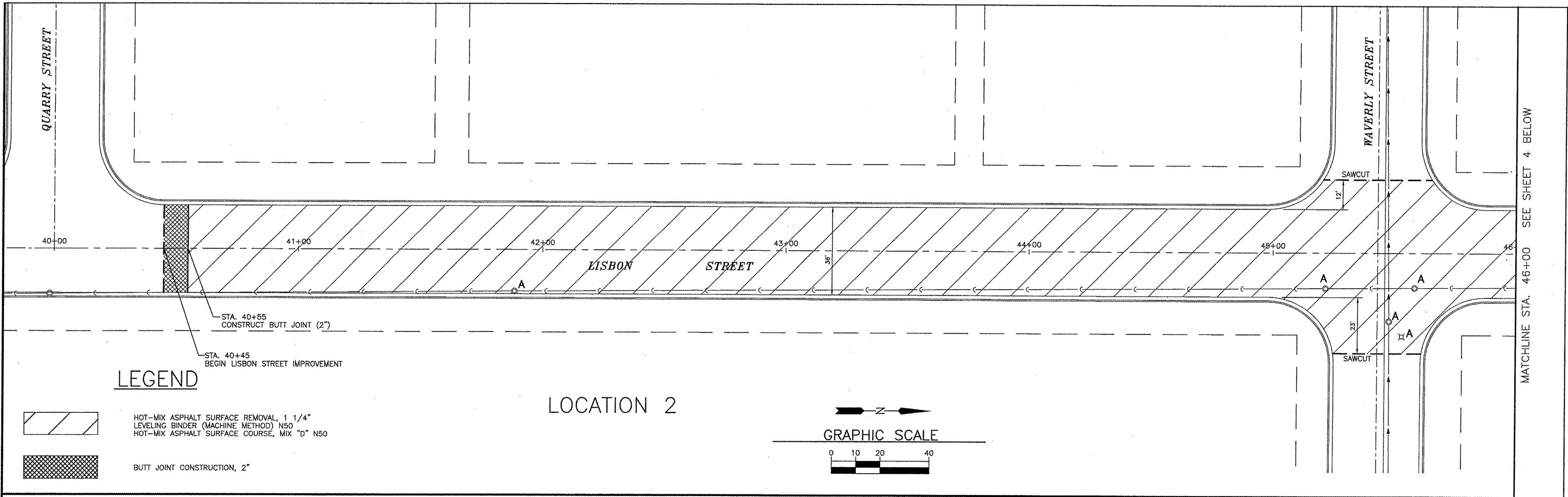


PERU MORRIS  
ILLINOIS

**MORRIS ARRA PROJECT 2009**  
CITY OF MORRIS, GRUNDY COUNTY, ILLINOIS

GENERAL NOTES & TYPICAL SECTIONS

SCALE: 1 = 20  
FILE NO.: 12863  
SHEET 3  
OF 12



DRAWN BY: MAB  
 CHECKED BY: RJS  
 DATE: 4/1/09

REVISIONS	
DATE	BY
5/12/09	MAB

**CHAMLIN ASSOCIATES**  
 PERU MORRIS ILLINOIS

**MORRIS ARRA PROJECT 2009**  
 CITY OF MORRIS, GRUNDY COUNTY, ILLINOIS

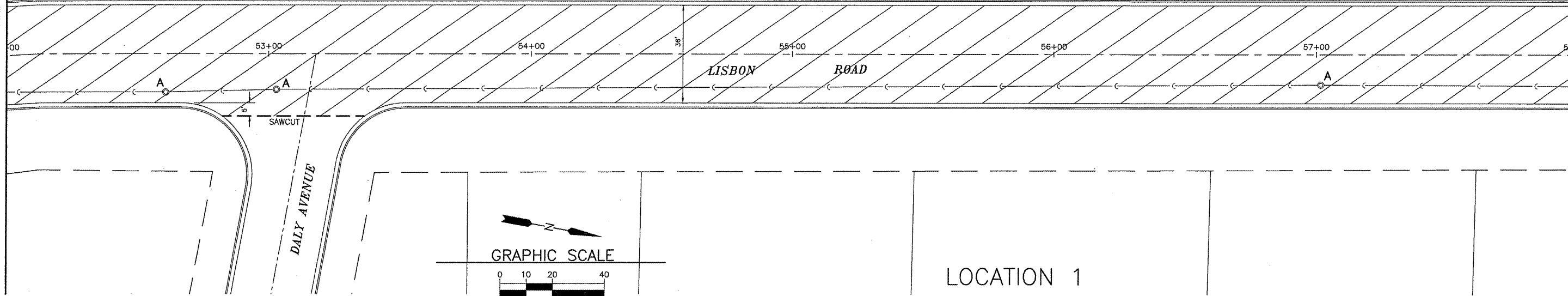
**LISBON STREET & LISBON ROAD**  
 (FALL 5967 & FALL 5966)

SCALE: 1" = 20'  
 FILE NO.: 12883

SHEET 4  
 OF 12

MATCHLINE STA. 52+00 SEE SHEET 4

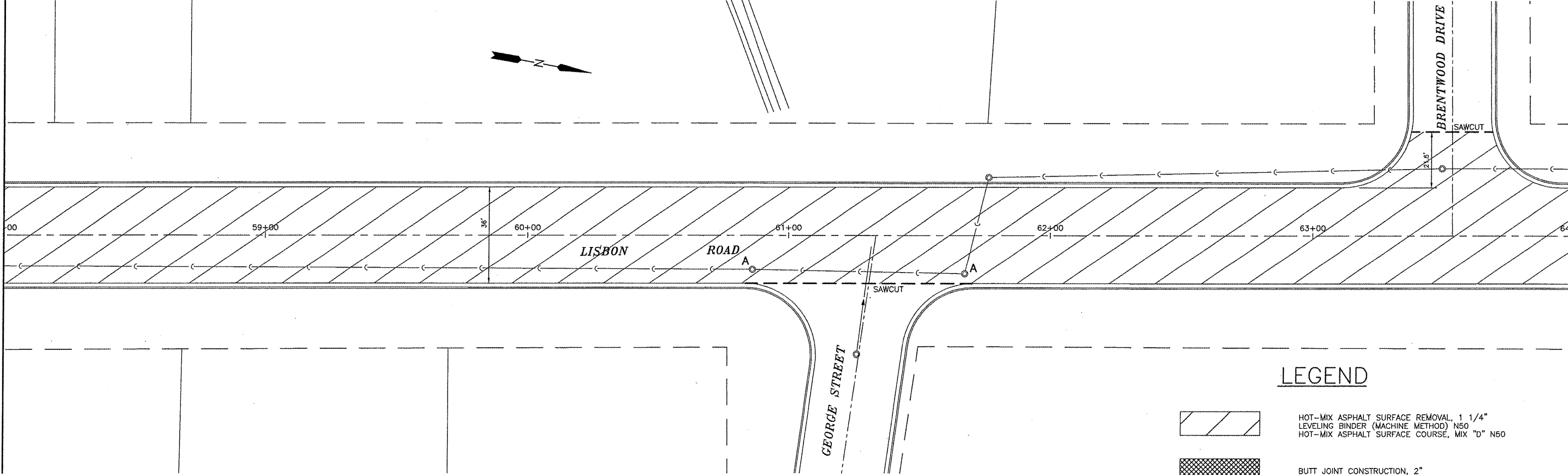
MATCHLINE STA. 58+00 SEE SHEET 5 BELOW



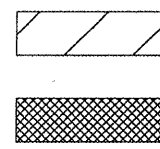
LOCATION 1

MATCHLINE STA. 58+00 SEE SHEET 5 ABOVE

MATCHLINE STA. 64+00 SEE SHEET 6



LEGEND



HOT-MIX ASPHALT SURFACE REMOVAL, 1 1/4"  
 LEVELING BINDER (MACHINE METHOD) N50  
 HOT-MIX ASPHALT SURFACE COURSE, MIX "D" N50

BUTT JOINT CONSTRUCTION, 2"

DRAWN BY: MAB  
 CHECKED BY: RJS  
 DATE: 4/1/09

REVISIONS	
DATE	BY
5/12/09	MAB



PERU MORRIS  
 ILLINOIS

MORRIS ARRA PROJECT 2009  
 CITY OF MORRIS, GRUNDY COUNTY, ILLINOIS

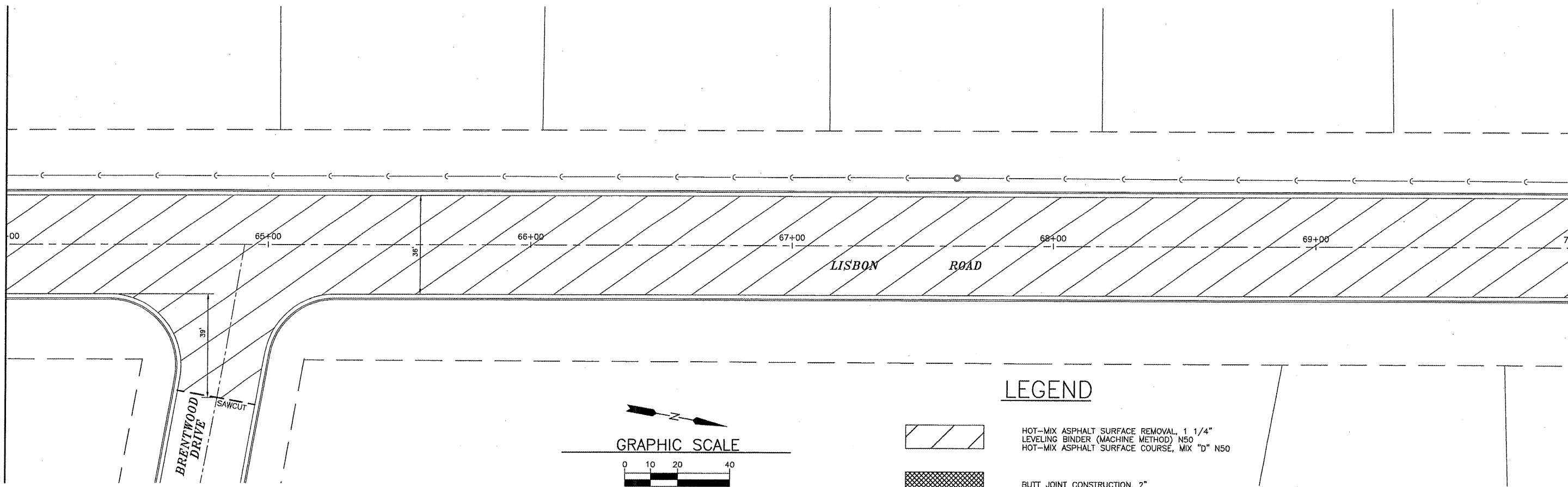
LISBON ROAD  
 (FAU 5966)

SCALE: 1" = 20'  
 FILE NO.: 12883

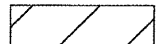

SHEET 5  
 OF 12

MATCHLINE STA. 64+00 SEE SHEET 5

MATCHLINE STA. 70+00 SEE SHEET 6 BELOW

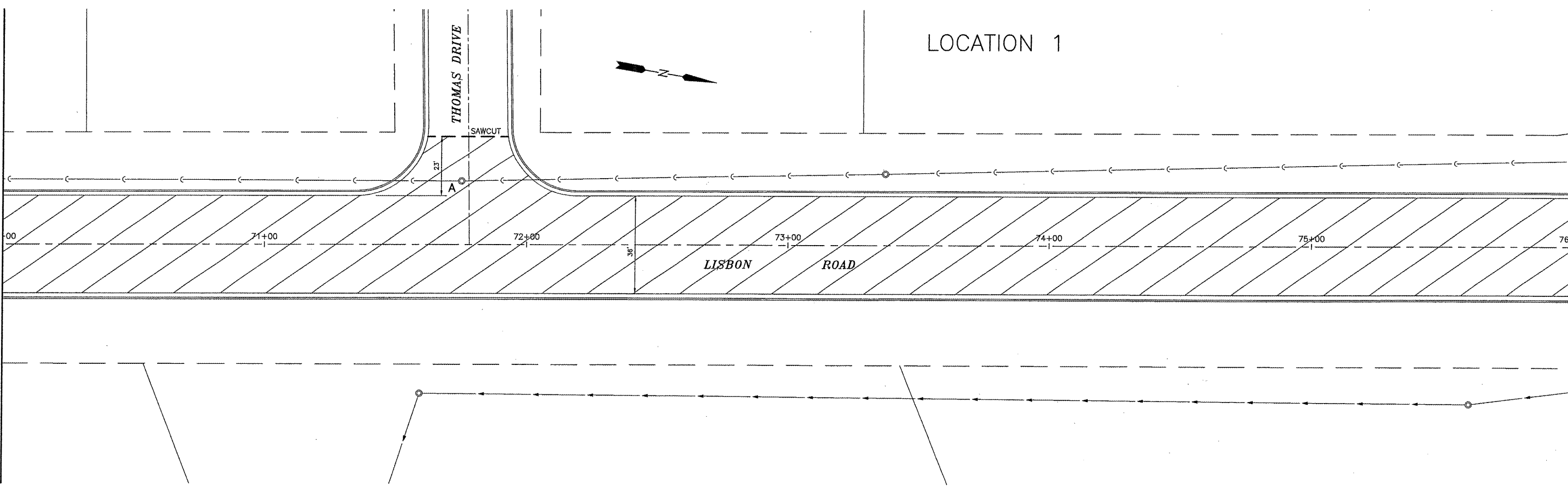


**LEGEND**

-  HOT-MIX ASPHALT SURFACE REMOVAL, 1 1/4" LEVELING BINDER (MACHINE METHOD) N50 HOT-MIX ASPHALT SURFACE COURSE, MIX "D" N50
-  BUTT JOINT CONSTRUCTION, 2"

MATCHLINE STA. 70+00 SEE SHEET 6 ABOVE

MATCHLINE STA. 76+00 SEE SHEET 7



DRAWN BY: MAB  
 CHECKED BY: RJS  
 DATE: 4/1/09

REVISIONS	
DATE	BY
5/12/09	MAB

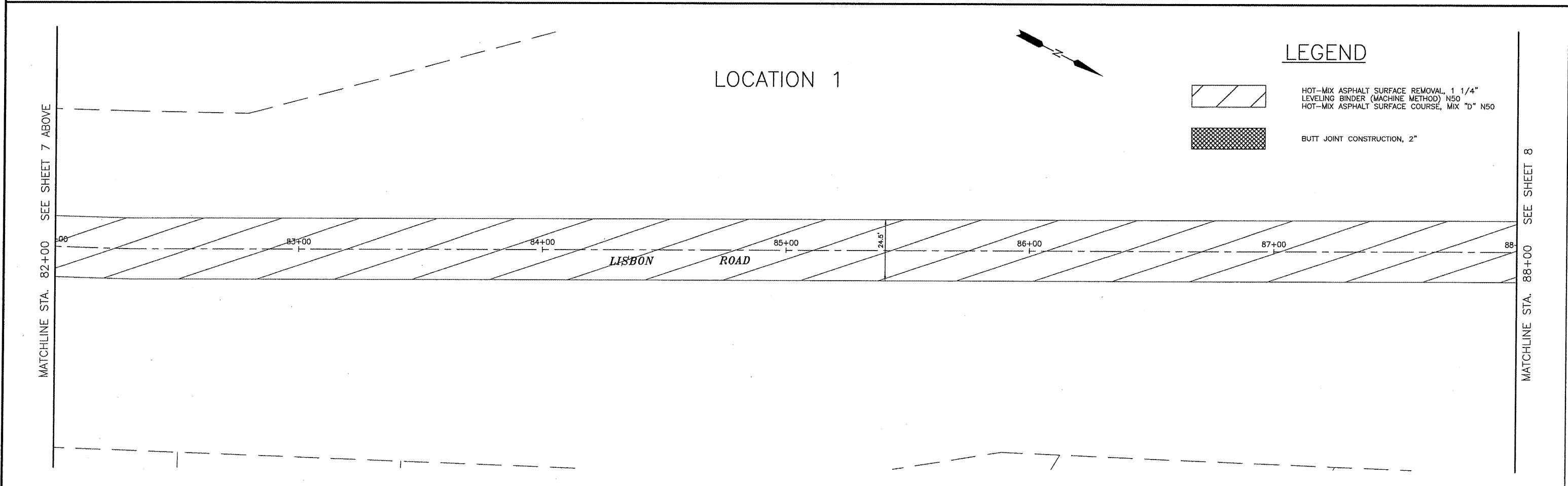
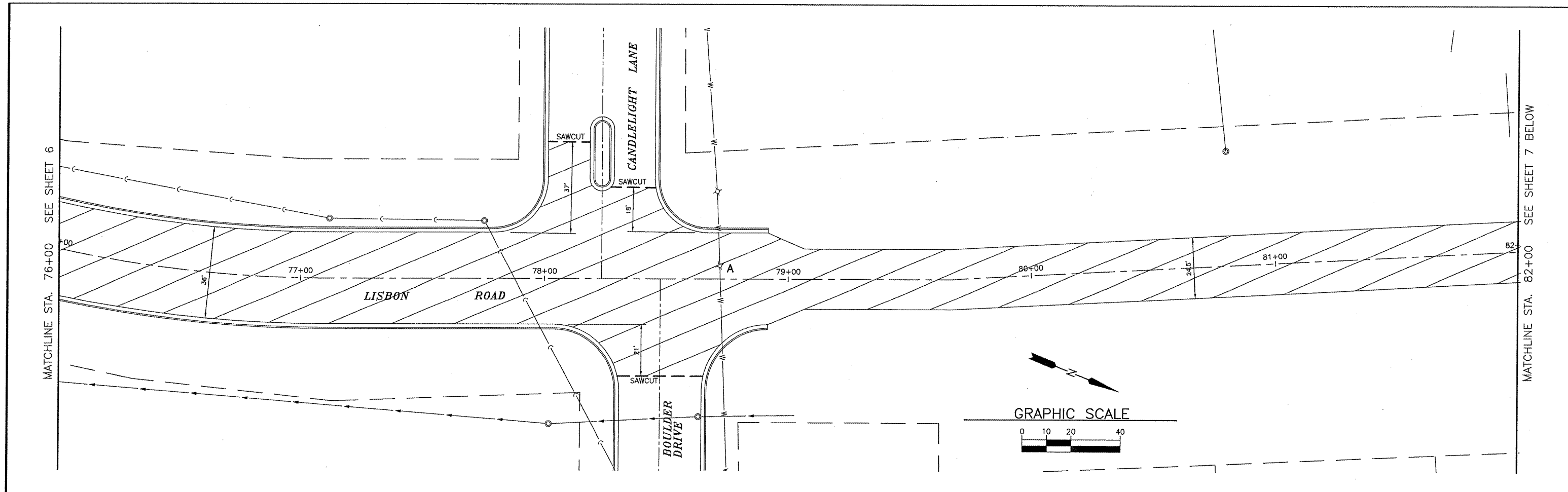
**CHAMLIN & ASSOCIATES**  
 PERU MORRIS ILLINOIS

**MORRIS ARRA PROJECT 2009**  
 CITY OF MORRIS, GRUNDY COUNTY, ILLINOIS

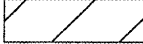

**LISBON ROAD**  
 (FAU 5966)

SCALE: 1" = 20'  
 FILE NO.: 12883

SHEET 6  
 OF 12



**LEGEND**

-  HOT-MIX ASPHALT SURFACE REMOVAL, 1 1/4" LEVELING BINDER (MACHINE METHOD) N50  
HOT-MIX ASPHALT SURFACE COURSE, MIX "D" N50
-  BUTT JOINT CONSTRUCTION, 2"

DRAWN BY: MAB  
 CHECKED BY: RJS  
 DATE: 4/1/09

REVISIONS	
DATE	BY
5/12/09	MAB

**CHAMLIN ASSOCIATES**  
 PERU MORRIS ILLINOIS

**MORRIS ARRA PROJECT 2009**  
 CITY OF MORRIS, GRUNDY COUNTY, ILLINOIS

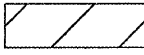
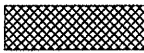
**LISBON ROAD (FAU 5966)**

SCALE: 1 = 20	SHEET 7
FILE NO.: 12883	OF 12

MATCHLINE STA. 88+00 SEE SHEET 7

MATCHLINE STA. 94+00 SEE SHEET 8 BELOW

### LEGEND

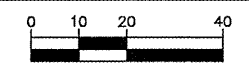
-  HOT-MIX ASPHALT SURFACE REMOVAL, 1 1/4" LEVELING BINDER (MACHINE METHOD) N50  
HOT-MIX ASPHALT SURFACE COURSE, MIX "D" N50
-  BUTT JOINT CONSTRUCTION, 2"

STRUCTURE NO. 032-0041  
I-80 OVERPASS OMISSION  
STA. 89+51 TO STA. 91+54

STA. 89+41  
CONSTRUCT BUTT JOINT (2")

STA. 91+64  
CONSTRUCT BUTT JOINT (2")

### GRAPHIC SCALE



## LOCATION 1

MATCHLINE STA. 94+00 SEE SHEET 8 ABOVE

MATCHLINE STA. 100+00 SEE SHEET 9

DRAWN BY: MAB  
 CHECKED BY: RJS  
 DATE: 4/1/09

REVISIONS	
DATE	BY
5/12/09	MAB

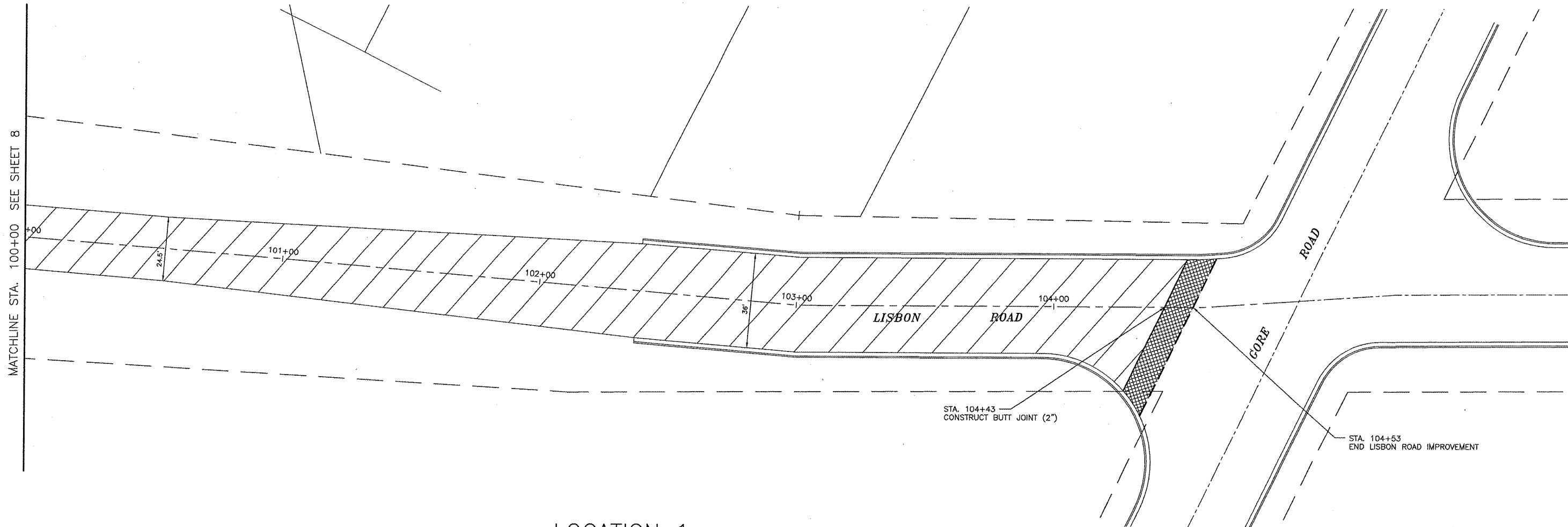
**CHAMLIN & ASSOCIATES**  
 PERU MORRIS ILLINOIS

**MORRIS ARRA PROJECT 2009**  
 CITY OF MORRIS, GRUNDY COUNTY, ILLINOIS

**LISBON ROAD**  
 (FAU 5966)

SCALE: 1 = 20  
 FILE NO.: 12883  
 SHEET 8 OF 12





MATCHLINE STA. 100+00 SEE SHEET 8

24.5'

101+00

102+00

103+00

LISBON ROAD

104+00

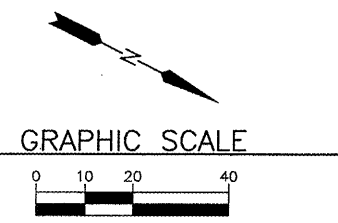
ROAD

CORE

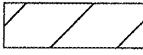
STA. 104+43  
CONSTRUCT BUTT JOINT (2")

STA. 104+53  
END LISBON ROAD IMPROVEMENT

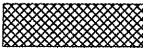
LOCATION 1



**LEGEND**



HOT-MIX ASPHALT SURFACE REMOVAL, 1 1/4"  
LEVELING BINDER (MACHINE METHOD) N50  
HOT-MIX ASPHALT SURFACE COURSE, MIX "D" N50



BUTT JOINT CONSTRUCTION, 2"

DRAWN BY: MAB	REVISIONS
CHECKED BY: RJS	DATE: 4/1/09

DATE	BY
5/12/09	MAB

**CHAMLIN & ASSOCIATES**

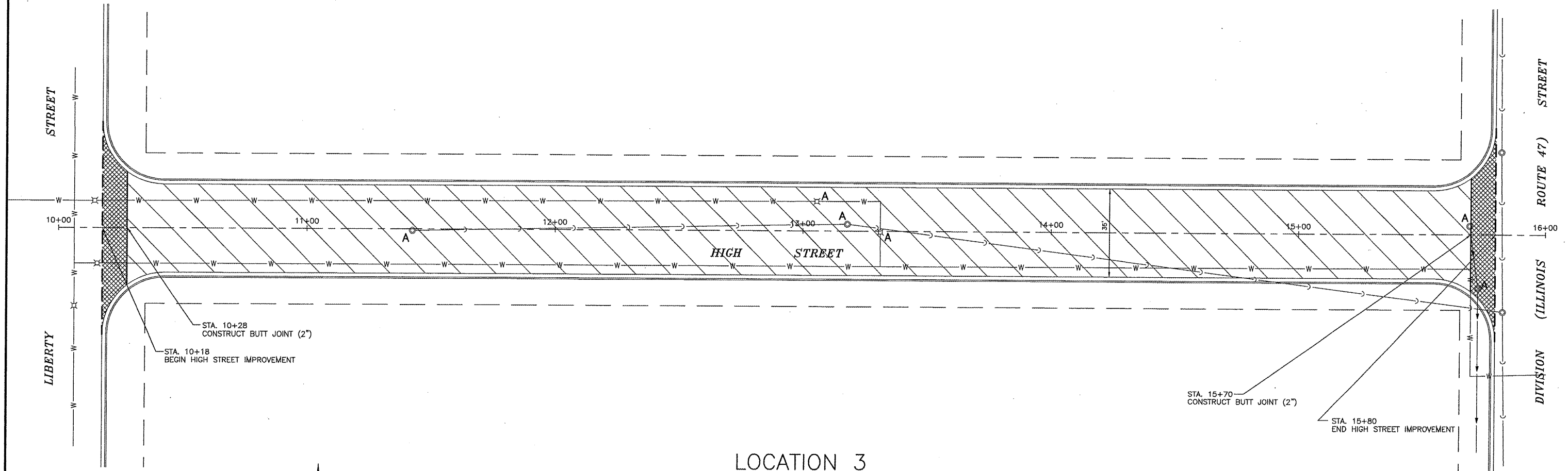
PERU MORRIS  
ILLINOIS

**MORRIS ARRA PROJECT 2009**  
CITY OF MORRIS, GRUNDY COUNTY, ILLINOIS

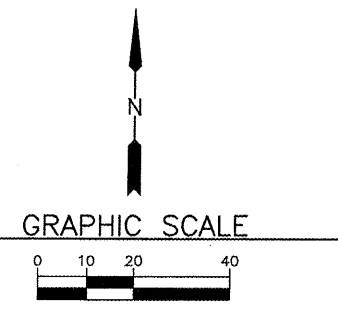
**LISBON ROAD**  
(FAU 5966)

SCALE: 1" = 20'  
FILE NO.: 12883

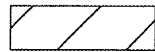

SHEET 9  
OF 12



LOCATION 3



LEGEND

-  HOT-MIX ASPHALT SURFACE REMOVAL, 1 1/4" LEVELING BINDER (MACHINE METHOD) N50  
HOT-MIX ASPHALT SURFACE COURSE, MIX "D" N50
-  BUTT JOINT CONSTRUCTION, 2"

DRAWN BY: MAB	H:\A\JOB\6\6952-00 CAD/.DWG: PP10 XREF: P-PLAN
CHECKED BY: RJS	DATE: 4/27/09

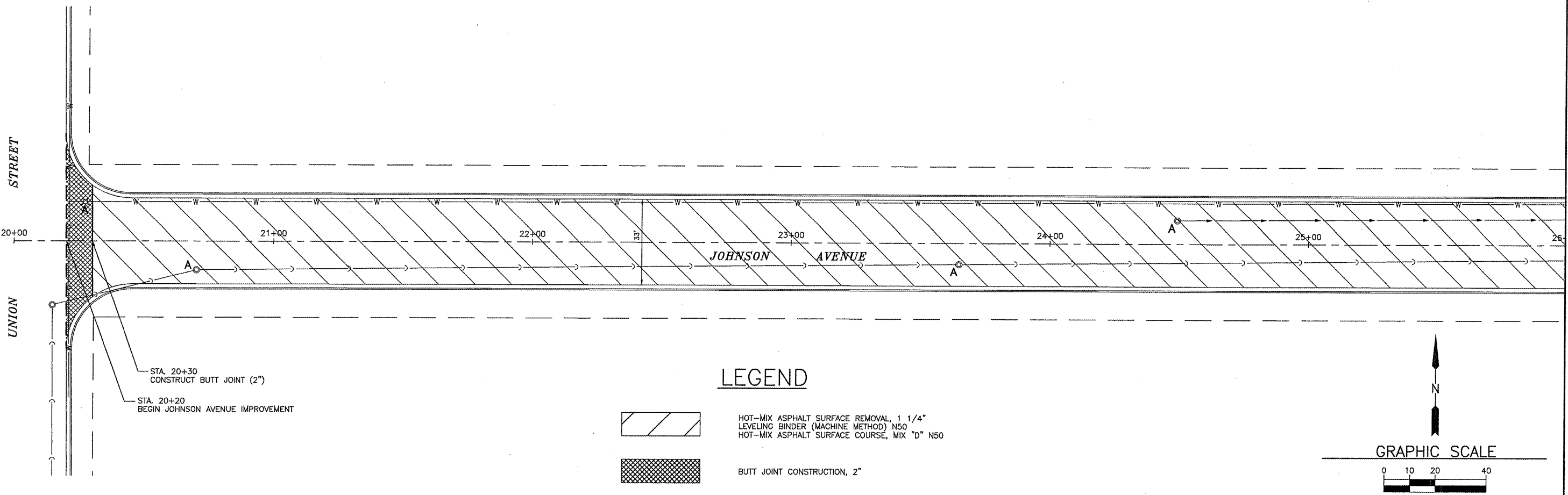
REVISIONS	
DATE	BY
5/12/09	MAB

**CHAMLIN ASSOCIATES**  
PERU MORRIS ILLINOIS

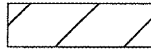

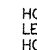
**MORRIS ARRA PROJECT 2009**  
CITY OF MORRIS, GRUNDY COUNTY, ILLINOIS

**HIGH STREET (FAU 5953)**

SCALE: 1 = 20	SHEET 10
FILE NO.: 12883	OF 12



**LEGEND**

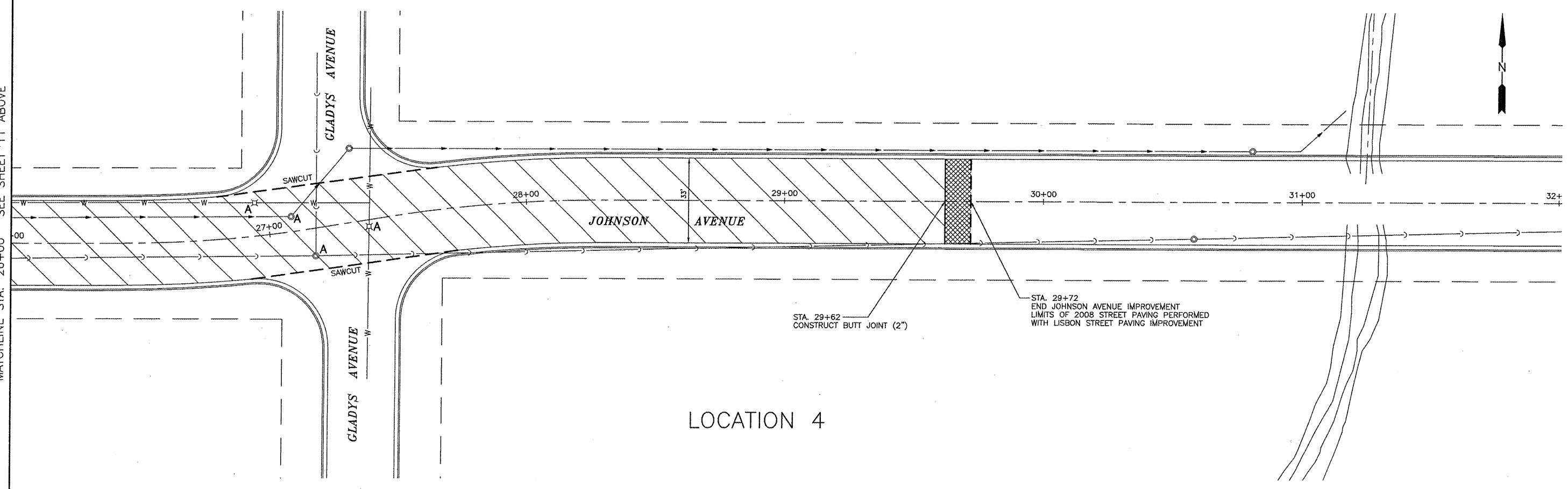
-  HOT-MIX ASPHALT SURFACE REMOVAL, 1 1/4" LEVELING BINDER (MACHINE METHOD) N50
-  BUTT JOINT CONSTRUCTION, 2"
-  HOT-MIX ASPHALT SURFACE COURSE, MIX "D" N50

STA. 20+30  
CONSTRUCT BUTT JOINT (2")

STA. 20+20  
BEGIN JOHNSON AVENUE IMPROVEMENT

MATCHLINE STA. 26+00 SEE SHEET 11 BELOW

MATCHLINE STA. 26+00 SEE SHEET 11 ABOVE



**LOCATION 4**

STA. 29+72  
END JOHNSON AVENUE IMPROVEMENT  
LIMITS OF 2008 STREET PAVING PERFORMED  
WITH LISBON STREET PAVING IMPROVEMENT

STA. 29+62  
CONSTRUCT BUTT JOINT (2")

DRAWN BY: MAB	H:\A09\66952-00 CAD/DWG: PP11 XREF: P-PLAN
CHECKED BY: RJS	DATE: 4/27/09

REVISIONS	
DATE	BY
5/12/09	MAB

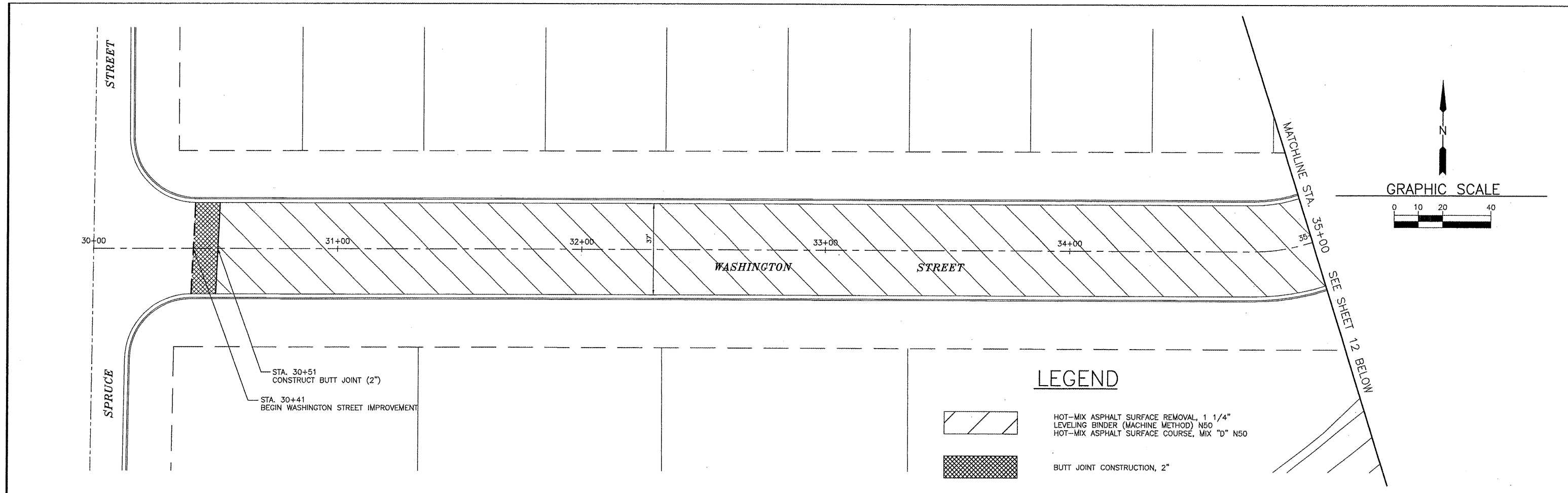
**CHAMLIN & ASSOCIATES**

PERU MORRIS  
ILLINOIS

**MORRIS ARRA PROJECT 2009**  
CITY OF MORRIS, GRUNDY COUNTY, ILLINOIS

**JOHNSON AVENUE**  
(FAU 5954)

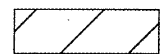

SCALE: 1" = 20'	SHEET 11
FILE NO.: 12883	OF 12

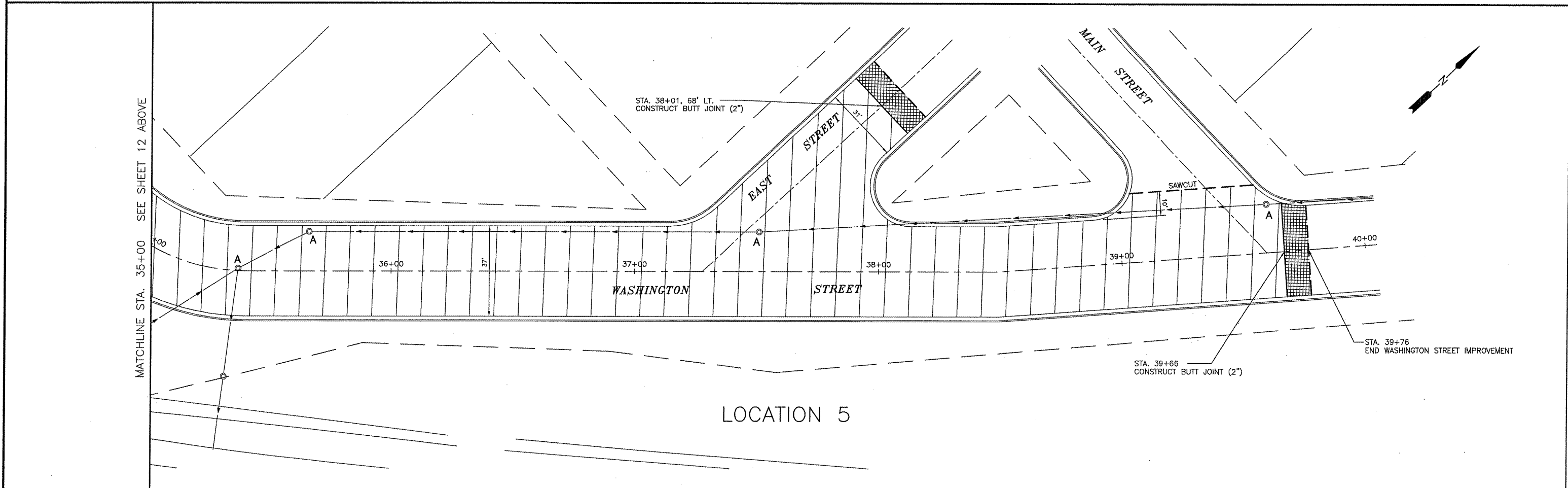


STA. 30+51  
CONSTRUCT BUTT JOINT (2")

STA. 30+41  
BEGIN WASHINGTON STREET IMPROVEMENT

**LEGEND**

-  HOT-MIX ASPHALT SURFACE REMOVAL, 1 1/4" LEVELING BINDER (MACHINE METHOD) N50  
HOT-MIX ASPHALT SURFACE COURSE, MIX "D" N50
-  BUTT JOINT CONSTRUCTION, 2"



STA. 38+01, 68' LT.  
CONSTRUCT BUTT JOINT (2")

STA. 39+66  
CONSTRUCT BUTT JOINT (2")

STA. 39+76  
END WASHINGTON STREET IMPROVEMENT

**LOCATION 5**

DRAWN BY: MAB	H:\A\09\6\6952-00 CAD/DWG: PP3 XREF: P-PLAN	REVISIONS		PERU MORRIS ILLINOIS	MORRIS ARRA PROJECT 2009 CITY OF MORRIS, GRUNDY COUNTY, ILLINOIS	WASHINGTON STREET (FAU 5962)	SCALE: 1 = 20	SHEET 12
		CHECKED BY: RJS	DATE: 4/1/09				DATE: 5/12/09	BY: MAB

