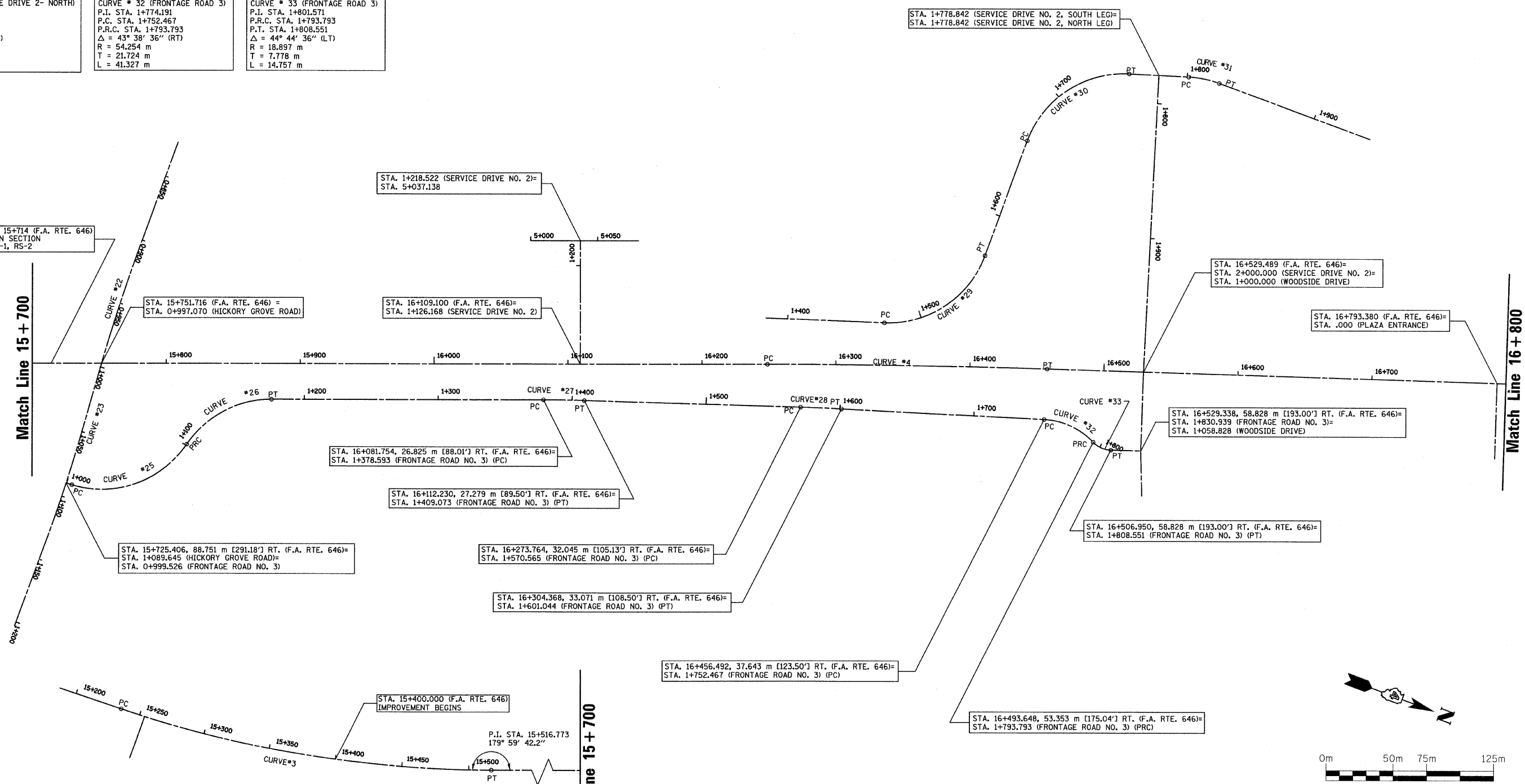


SEC. 20 & 29, T.10N., R.8E., 4th P.M.

RTE NO.	SECTION	COUNTY	TOTAL	SHEET #
FA 646	125W-1, RS-2	PEORIA	256	37
STATION 15+400 TO STATION 16+800				

<p>CURVE * 3 (IL RTE 40) P.I. STA. 15+377.332 P.C. STA. 15+235.377 P.T. STA. 15+516.773 $\Delta = 18^\circ 39' 35''$ (LT) R = 864.044 m T = 141.955 m L = 281.396 m</p>	<p>CURVE * 4 (IL RTE 40) P.I. STA. 16+353.185 P.C. STA. 16+248.825 P.T. STA. 16+457.530 $\Delta = 1^\circ 42' 25''$ (RT) R = 7,005.438 m T = 104.360 m L = 208.705 m</p>	<p>CURVE * 22 (HICKORY GROVE) P.I. STA. 0+950.515 P.C. STA. 0+904.970 P.T. STA. 0+996.020 $\Delta = 4^\circ 09' 42''$ (LT) R = 1,253.540 m T = 45.545 m L = 91.050 m</p>	<p>CURVE * 23 (HICKORY GROVE) P.I. STA. 1+088.245 P.C. STA. 1+043.496 P.T. STA. 1+132.955 $\Delta = 4^\circ 06' 49''$ (RT) R = 1,246.000 m T = 44.749 m L = 89.459 m</p>	<p>CURVE * 25 (FRONTAGE ROAD 3) P.I. STA. 1+060.244 P.C. STA. 1+003.962 P.R.C. STA. 1+101.092 $\Delta = 72^\circ 29' 47''$ (LT) R = 76.764 m T = 56.282 m L = 97.130 m</p>	<p>CURVE * 26 (FRONTAGE ROAD 3) P.I. STA. 1+141.481 P.R.C. STA. 1+101.092 P.T. STA. 1+175.452 $\Delta = 59^\circ 30' 07''$ (RT) R = 76.764 m T = 40.389 m L = 74.360 m</p>	<p>CURVE * 27 (FRONTAGE ROAD 3) P.I. STA. 1+393.834 P.C. STA. 1+378.593 P.T. STA. 1+409.073 $\Delta = 1^\circ 42' 25''$ (RT) R = 1,023.096 m T = 15.241 m L = 30.480 m</p>	<p>CURVE * 28 (FRONTAGE ROAD 3) P.I. STA. 1+585.805 P.C. STA. 1+570.565 P.T. STA. 1+601.044 $\Delta = 1^\circ 06' 00''$ (RT) R = 1,587.565 m T = 15.240 m L = 30.480 m</p>	<p>CURVE * 29 (SERVICE DRIVE 2) P.I. STA. 1+527.864 P.C. STA. 1+472.179 P.T. STA. 1+568.529 $\Delta = 71^\circ 54' 53''$ (LT) R = 76.764 m T = 55.685 m L = 96.350 m</p>	<p>CURVE * 30 (SERVICE DRIVE 2) P.I. STA. 1+715.694 P.C. STA. 1+659.289 P.T. STA. 1+756.579 $\Delta = 72^\circ 36' 57''$ (RT) R = 76.764 m T = 56.405 m L = 97.289 m</p>
--	---	---	---	---	---	---	---	---	---

<p>CURVE * 31 (SERVICE DRIVE 2- NORTH) P.I. STA. 1+812.847 P.C. STA. 1+801.092 P.T. STA. 1+824.421 $\Delta = 17^\circ 24' 47''$ (RT) R = 76.761 m T = 11.755 m L = 23.329 m</p>	<p>CURVE * 32 (FRONTAGE ROAD 3) P.I. STA. 1+774.191 P.C. STA. 1+752.467 P.R.C. STA. 1+793.793 $\Delta = 43^\circ 38' 36''$ (RT) R = 54.254 m T = 21.724 m L = 41.327 m</p>	<p>CURVE * 33 (FRONTAGE ROAD 3) P.I. STA. 1+801.571 P.R.C. STA. 1+793.793 P.T. STA. 1+808.551 $\Delta = 44^\circ 44' 36''$ (LT) R = 18.897 m T = 7.778 m L = 14.757 m</p>
--	---	--



REVISIONS	
NAME	DATE

ILLINOIS DEPARTMENT OF TRANSPORTATION
**CENTERLINE ALIGNMENT
 ILLINOIS ROUTE 40**

SCALE: 1:1500
 DATE: 3/13/09

DRAWN BY: SAS
 CHECKED BY: ECM