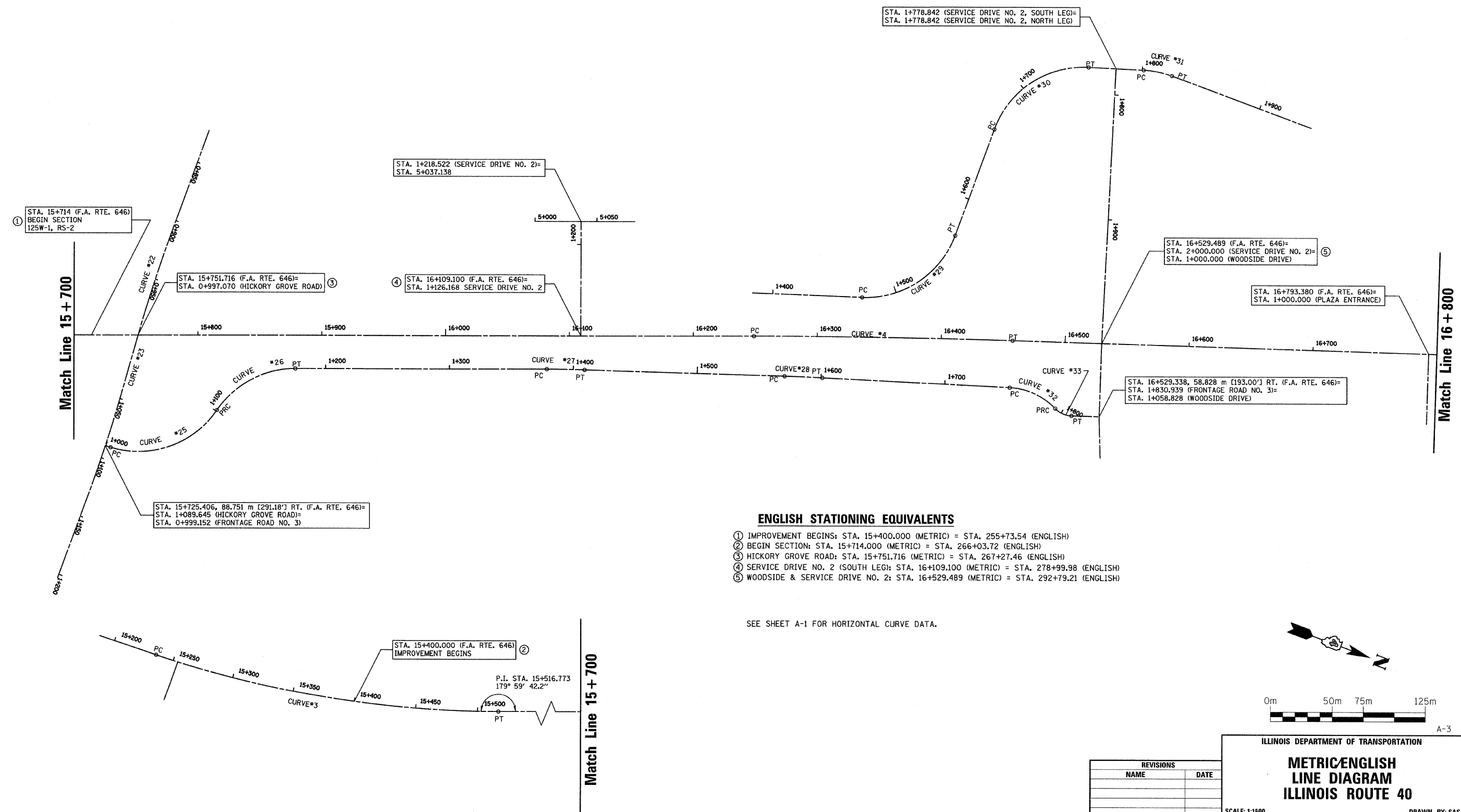


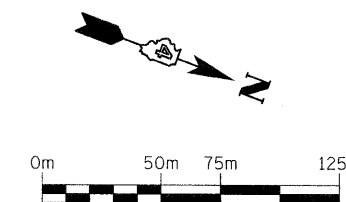
RTE NO.	SECTION	COUNTY	TOTAL	SHEET #
FA 646	125W-1, RS-2	PEORIA	256	39
STATION 15+400 TO		STATION 16+800		



ENGLISH STATIONING EQUIVALENTS

- ① IMPROVEMENT BEGINS: STA. 15+400.000 (METRIC) = STA. 255+73.54 (ENGLISH)
- ② BEGIN SECTION: STA. 15+714.000 (METRIC) = STA. 266+03.72 (ENGLISH)
- ③ HICKORY GROVE ROAD: STA. 15+751.716 (METRIC) = STA. 267+27.46 (ENGLISH)
- ④ SERVICE DRIVE NO. 2 (SOUTH LEG): STA. 16+109.100 (METRIC) = STA. 278+99.98 (ENGLISH)
- ⑤ WOODSIDE & SERVICE DRIVE NO. 2: STA. 16+529.489 (METRIC) = STA. 292+79.21 (ENGLISH)

SEE SHEET A-1 FOR HORIZONTAL CURVE DATA.



REVISIONS	
NAME	DATE

ILLINOIS DEPARTMENT OF TRANSPORTATION
**METRIC/ENGLISH
 LINE DIAGRAM
 ILLINOIS ROUTE 40**
 SCALE: 1:1500
 DATE: 3/13/09
 DRAWN BY: SAS
 CHECKED BY: ECM