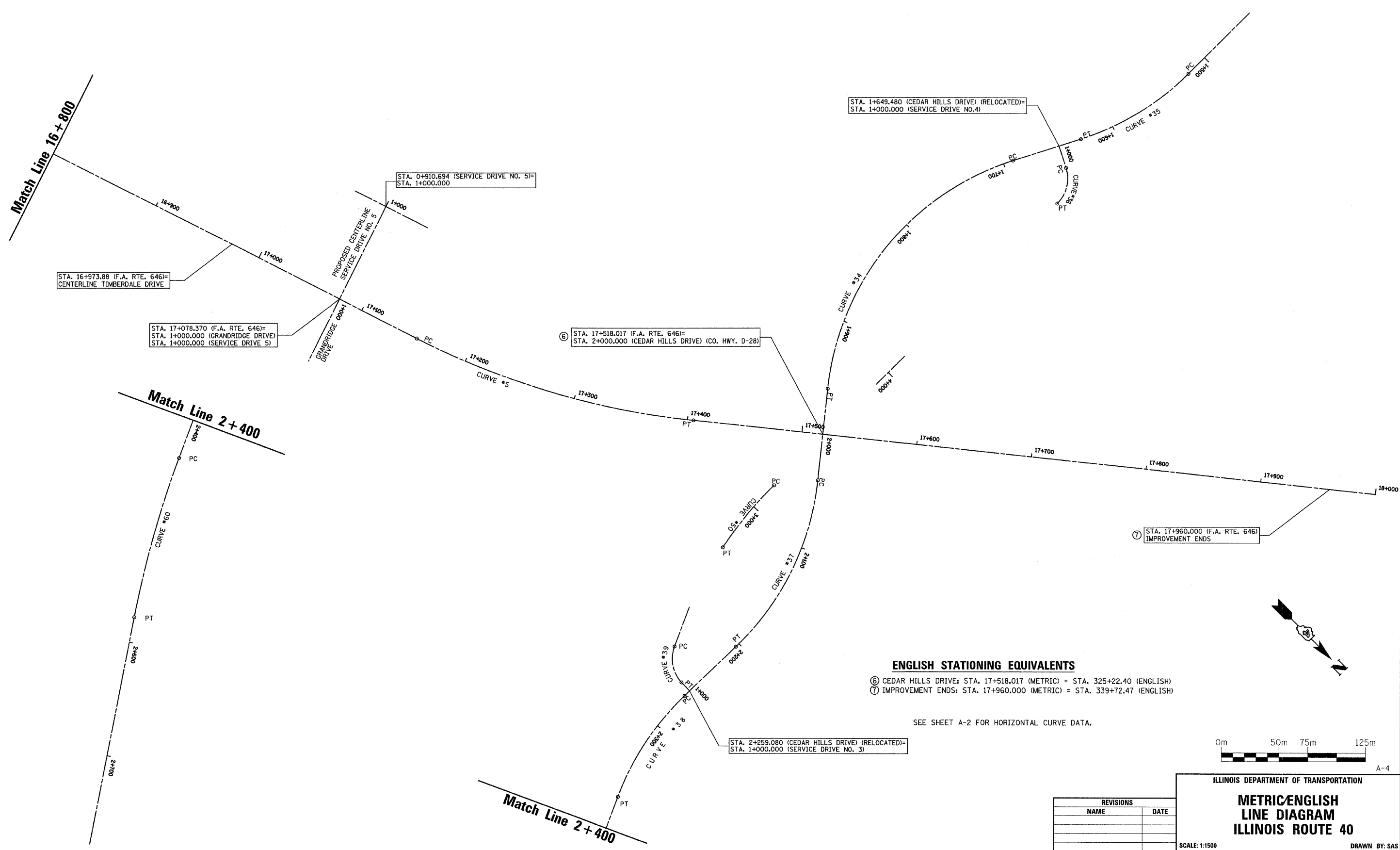


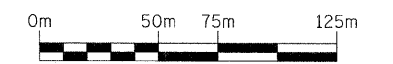
RTE NO.	SECTION	COUNTY	TOTAL	SHEET #
FA 646	125W-1, RS-2	PEORIA	256	40
		STATION 16+800 TO STATION 17+960		



ENGLISH STATIONING EQUIVALENTS

- ⑥ CEDAR HILLS DRIVE: STA. 17+518.017 (METRIC) = STA. 325+22.40 (ENGLISH)
- ⑦ IMPROVEMENT ENDS: STA. 17+960.000 (METRIC) = STA. 339+72.47 (ENGLISH)

SEE SHEET A-2 FOR HORIZONTAL CURVE DATA.



REVISIONS	
NAME	DATE

ILLINOIS DEPARTMENT OF TRANSPORTATION

**METRIC/ENGLISH
LINE DIAGRAM
ILLINOIS ROUTE 40**

SCALE: 1:1500
DATE: 3/13/09

DRAWN BY: SAS
CHECKED BY: ECM