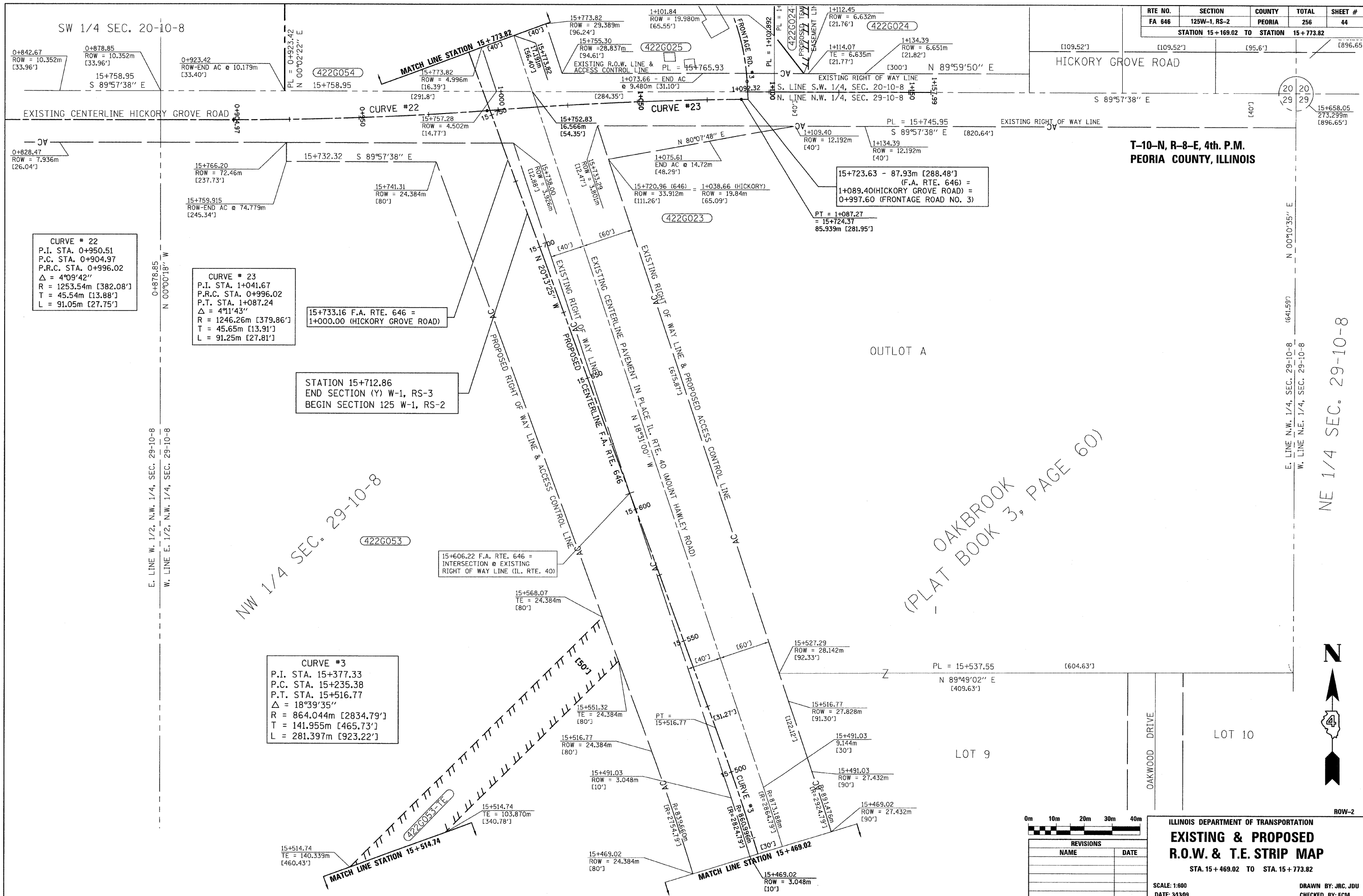


RTE NO.	SECTION	COUNTY	TOTAL	SHEET #
FA 646	125W-1, RS-2	PEORIA	256	44
STATION 15+169.02 TO STATION 15+773.82				



CURVE # 22
 P.I. STA. 0+950.51
 P.C. STA. 0+904.97
 P.R.C. STA. 0+996.02
 $\Delta = 4^{\circ}09'42''$
 $R = 1253.54m [382.08']$
 $T = 45.54m [13.88']$
 $L = 91.05m [27.75']$

CURVE # 23
 P.I. STA. 1+041.67
 P.R.C. STA. 0+996.02
 P.T. STA. 1+087.24
 $\Delta = 4^{\circ}11'43''$
 $R = 1246.26m [379.86']$
 $T = 45.65m [13.91']$
 $L = 91.25m [27.81']$

CURVE # 3
 P.I. STA. 15+377.33
 P.C. STA. 15+235.38
 P.T. STA. 15+516.77
 $\Delta = 18^{\circ}39'35''$
 $R = 864.044m [2834.79']$
 $T = 141.955m [465.73']$
 $L = 281.397m [923.22']$

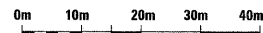
STATION 15+712.86
 END SECTION (Y) W-1, RS-3
 BEGIN SECTION 125 W-1, RS-2

15+606.22 F.A. RTE. 646 =
 INTERSECTION @ EXISTING
 RIGHT OF WAY LINE (IL. RTE. 40)

15+723.63 - 87.93m [288.48']
 (F.A. RTE. 646) =
 1+089.40 (HICKORY GROVE ROAD) =
 0+997.60 (FRONTAGE ROAD NO. 3)

NW 1/4 SEC. 29-10-8

(PLAT BOOK 3, PAGE 60)



REVISIONS	
NAME	DATE

ILLINOIS DEPARTMENT OF TRANSPORTATION
EXISTING & PROPOSED
R.O.W. & T.E. STRIP MAP
 STA. 15+469.02 TO STA. 15+773.82
 SCALE: 1:600
 DATE: 3/3/09
 DRAWN BY: JRC, JDU
 CHECKED BY: ECM

