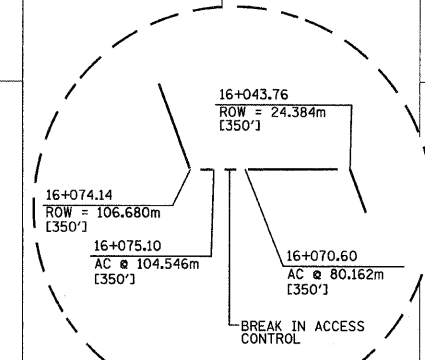
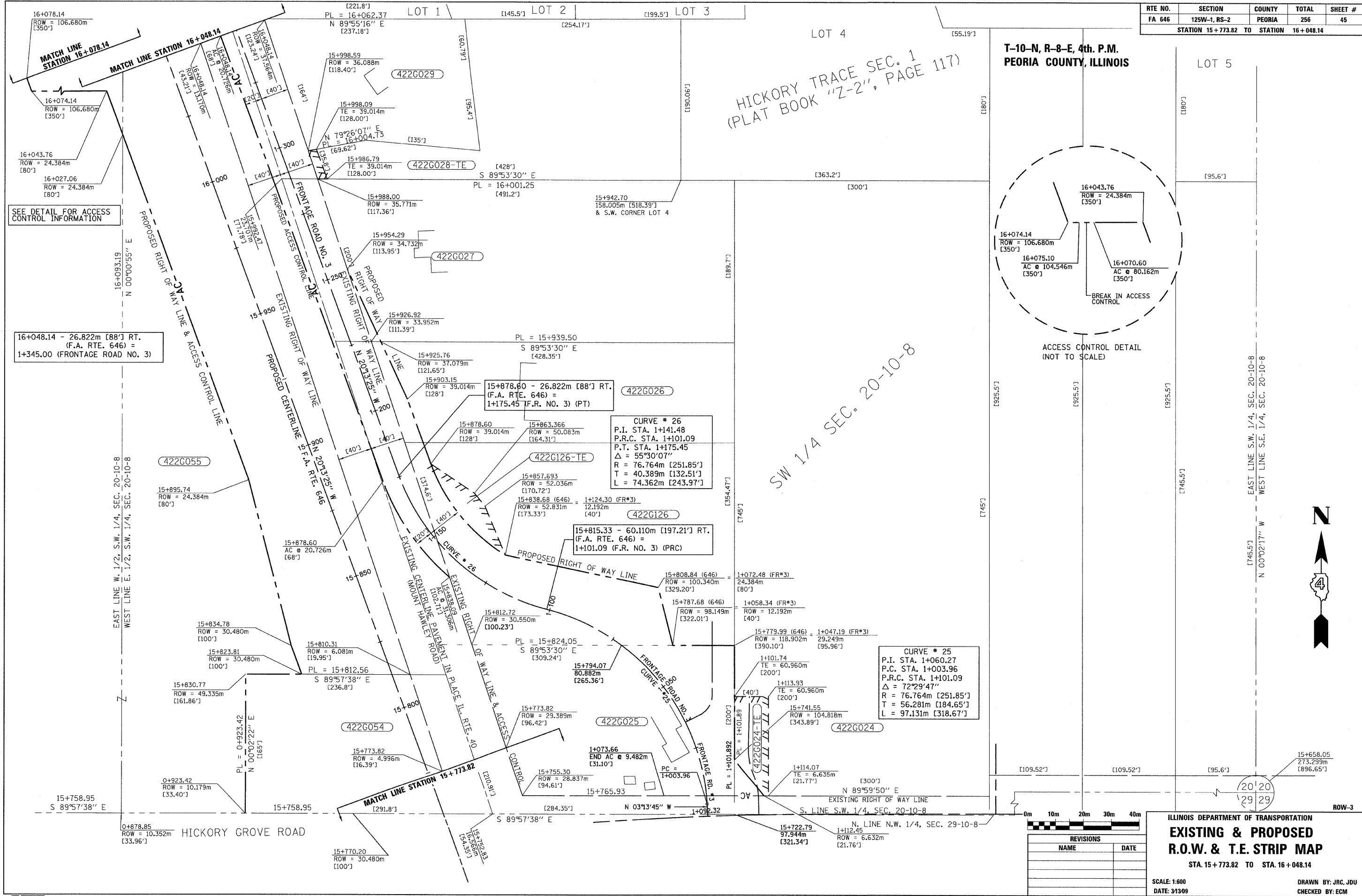


RTE NO.	SECTION	COUNTY	TOTAL	SHEET #
FA 646	125W-1, RS-2	PEORIA	256	45
STATION 15+773.82 TO STATION 16+048.14				

T-10-N, R-8-E, 4th. P.M.  
PEORIA COUNTY, ILLINOIS

HICKORY TRACE SEC. 1  
(PLAT BOOK "Z-2", PAGE 117)



SEE DETAIL FOR ACCESS CONTROL INFORMATION

16+048.14 - 26.822m [88'] RT.  
(F.A. RTE. 646) =  
1+345.00 (FRONTAGE ROAD NO. 3)

15+878.60 - 26.822m [88'] RT.  
(F.A. RTE. 646) =  
1+175.45 (F.R. NO. 3) (PT)

CURVE # 26  
P.I. STA. 1+141.48  
P.R.C. STA. 1+101.09  
P.T. STA. 1+175.45  
 $\Delta = 55^{\circ}30'07''$   
R = 76.764m [251.85']  
T = 40.389m [132.51']  
L = 74.362m [243.97']

15+815.33 - 60.110m [197.21'] RT.  
(F.A. RTE. 646) =  
1+101.09 (F.R. NO. 3) (PRC)

CURVE # 25  
P.I. STA. 1+060.27  
P.R.C. STA. 1+003.96  
P.T. STA. 1+101.09  
 $\Delta = 72^{\circ}29'47''$   
R = 76.764m [251.85']  
T = 56.281m [184.65']  
L = 97.131m [318.67']

REVISIONS	
NAME	DATE

ILLINOIS DEPARTMENT OF TRANSPORTATION  
**EXISTING & PROPOSED  
R.O.W. & T.E. STRIP MAP**  
STA. 15+773.82 TO STA. 16+048.14  
SCALE: 1:600  
DATE: 3/13/09  
DRAWN BY: JRC, JDU  
CHECKED BY: ECM