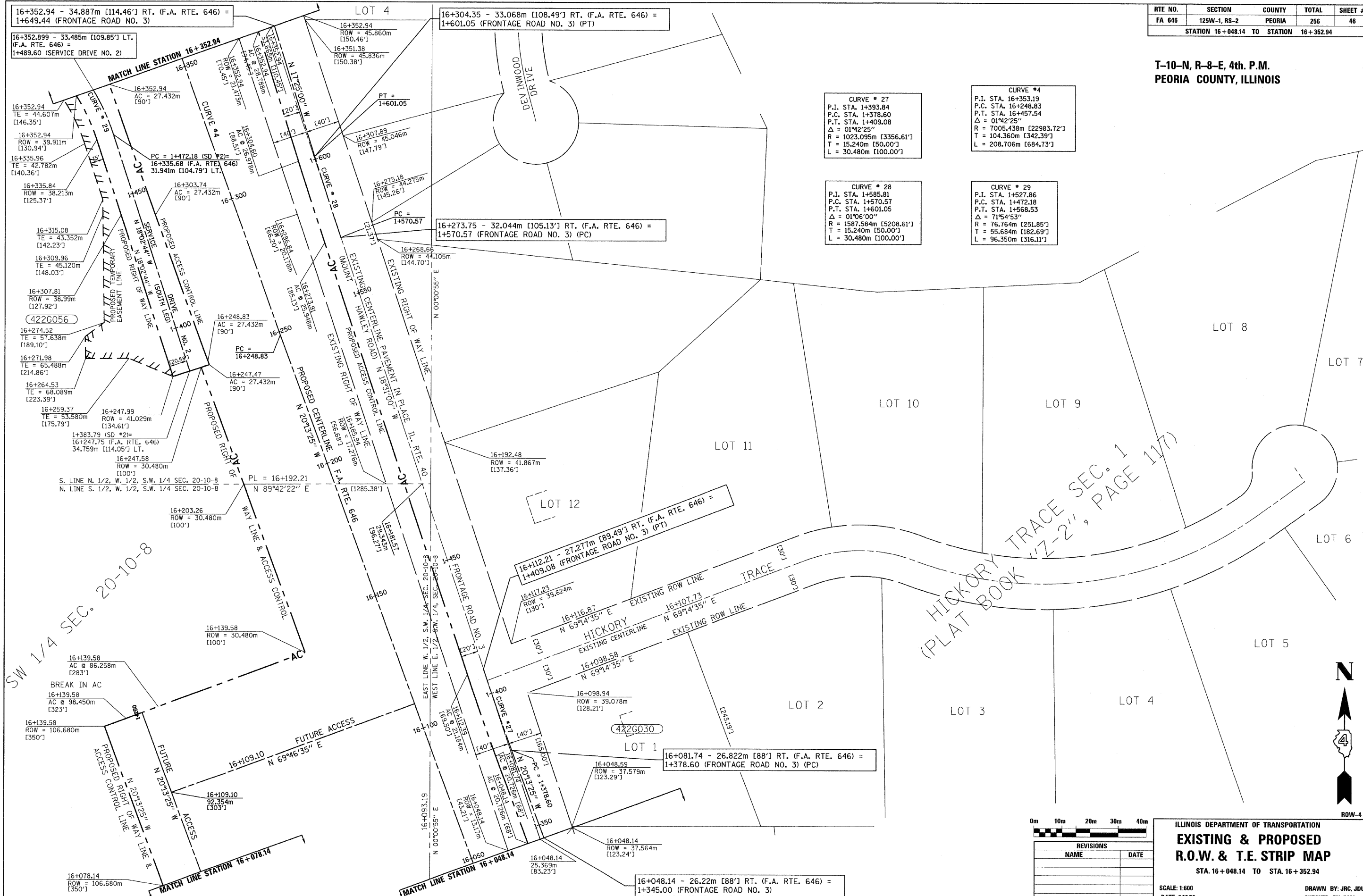


RTE NO.	SECTION	COUNTY	TOTAL	SHEET #
FA 646	125W-1, RS-2	PEORIA	256	46
STATION 16+048.14 TO STATION 16+352.94				

T-10-N, R-8-E, 4th. P.M.
PEORIA COUNTY, ILLINOIS



CURVE # 27
P.I. STA. 1+393.84
P.C. STA. 1+378.60
P.T. STA. 1+409.08
 $\Delta = 01^{\circ}42'25''$
R = 1023.095m [3356.61']
T = 15.240m [50.00']
L = 30.480m [100.00']

CURVE # 4
P.I. STA. 16+353.19
P.C. STA. 16+248.83
P.T. STA. 16+457.54
 $\Delta = 01^{\circ}42'25''$
R = 7005.438m [22983.72']
T = 104.360m [342.39']
L = 208.706m [684.73']

CURVE # 28
P.I. STA. 1+585.81
P.C. STA. 1+570.57
P.T. STA. 1+601.05
 $\Delta = 01^{\circ}06'00''$
R = 1587.584m [5208.61']
T = 15.240m [50.00']
L = 30.480m [100.00']

CURVE # 29
P.I. STA. 1+527.86
P.C. STA. 1+472.18
P.T. STA. 1+568.53
 $\Delta = 71^{\circ}54'53''$
R = 76.764m [251.85']
T = 55.684m [182.69']
L = 96.350m [316.11']

HICKORY TRACE SEC. 1
"Z-2", PAGE 117
(PLAT BOOK)

SW 1/4 SEC. 20-10-8



REVISIONS	
NAME	DATE

ILLINOIS DEPARTMENT OF TRANSPORTATION
**EXISTING & PROPOSED
R.O.W. & T.E. STRIP MAP**
STA. 16+048.14 TO STA. 16+352.94
SCALE: 1:600
DATE: 3/3/09
DRAWN BY: JRC, JDU
CHECKED BY: ECM