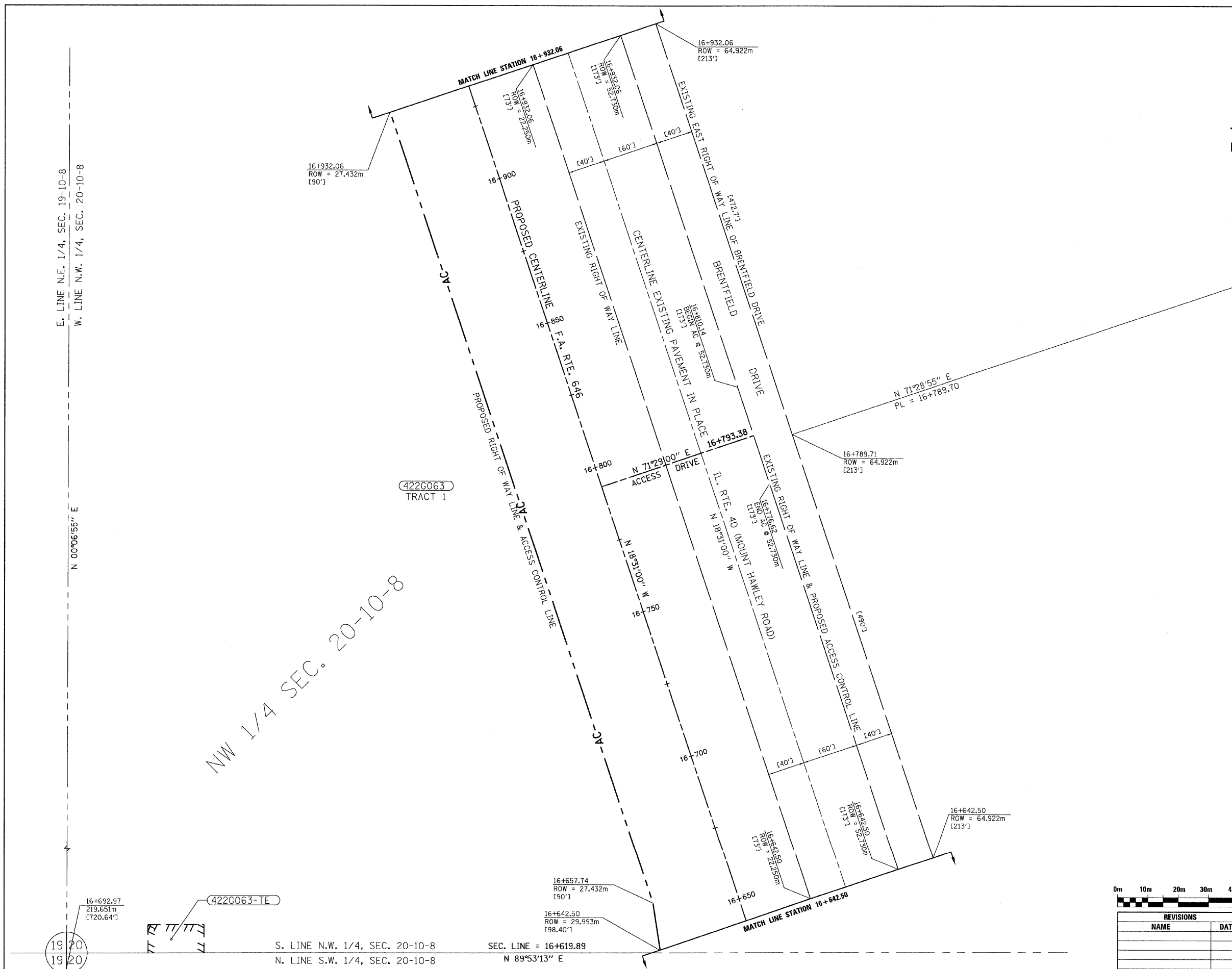


RTE NO.	SECTION	COUNTY	TOTAL	SHEET #
FA 646	125W-1, RS-2	PEORIA	256	48
STATION 16+642.50 TO STATION 16+932.06				

T-10-N, R-8-E, 4th. P.M.  
PEORIA COUNTY, ILLINOIS



E. LINE N.E. 1/4, SEC. 19-10-8  
W. LINE N.W. 1/4, SEC. 20-10-8

N 00°06'55" E

NW 1/4 SEC. 20-10-8

422G063  
TRACT 1

16+692.97  
219.651m  
[720.64']

422G063-TE

S. LINE N.W. 1/4, SEC. 20-10-8  
N. LINE S.W. 1/4, SEC. 20-10-8

SEC. LINE = 16+619.89  
N 89°53'13" E

16+657.74  
ROW = 27.432m  
[90']

16+642.50  
ROW = 29.993m  
[98.40']

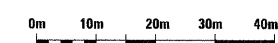
16+650  
16+650.00  
ROW = 27.432m  
[90']

16+642.50  
ROW = 27.432m  
[90']

16+642.50  
ROW = 64.922m  
[213']

16+789.71  
ROW = 64.922m  
[213']

16+932.06  
ROW = 64.922m  
[213']



REVISIONS	
NAME	DATE

ILLINOIS DEPARTMENT OF TRANSPORTATION  
**EXISTING & PROPOSED  
R.O.W. & T.E. STRIP MAP**  
STA. 16+642.50 TO STA. 16+932.06

SCALE: 1:600  
DATE: 3/3/09

DRAWN BY: JRC, JDU  
CHECKED BY: ECM



ROW-6