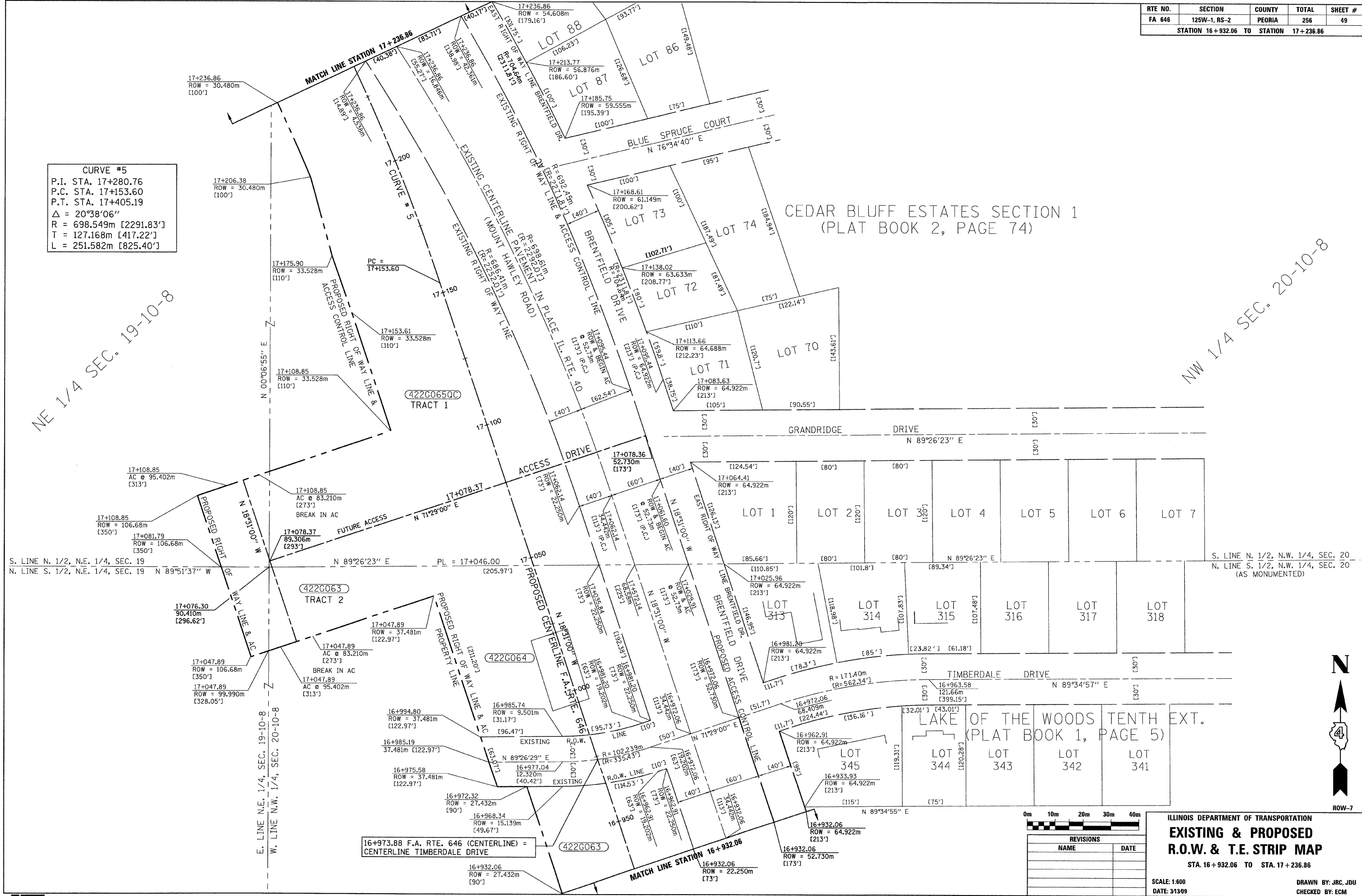


RTE NO.	SECTION	COUNTY	TOTAL	SHEET #
FA 646	125W-1, RS-2	PEORIA	256	49
STATION 16+932.06 TO STATION 17+236.86				

**CURVE #5**  
P.I. STA. 17+280.76  
P.C. STA. 17+153.60  
P.T. STA. 17+405.19  
Δ = 20°38'06"  
R = 698.549m [2291.83']  
T = 127.168m [417.22']  
L = 251.582m [825.40']



NE 1/4 SEC. 19-10-8

NW 1/4 SEC. 20-10-8



REVISIONS	
NAME	DATE

ILLINOIS DEPARTMENT OF TRANSPORTATION  
**EXISTING & PROPOSED  
R.O.W. & T.E. STRIP MAP**  
STA. 16+932.06 TO STA. 17+236.86  
SCALE: 1:600  
DATE: 3/3/09  
DRAWN BY: JRC, JDU  
CHECKED BY: ECM