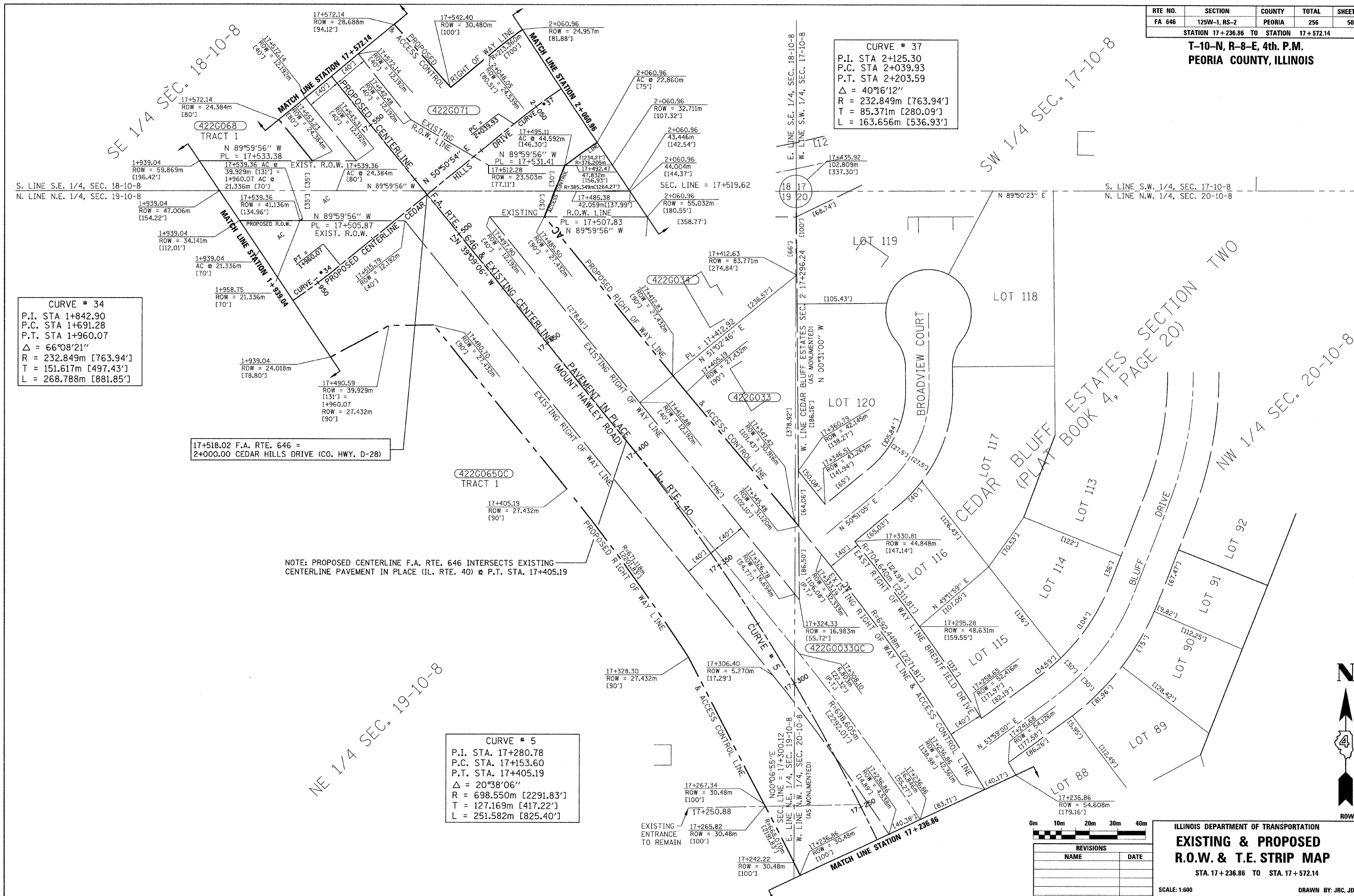


RTE NO.	SECTION	COUNTY	TOTAL	SHEET #
FA 646	125W-1, RS-2	PEORIA	256	50

STATION 17+236.86 TO STATION 17+572.14
T-10-N, R-8-E, 4th. P.M.
PEORIA COUNTY, ILLINOIS



CURVE # 34
P.I. STA 1+842.90
P.C. STA 1+691.28
P.T. STA 1+960.07
 $\Delta = 66^{\circ}08'21''$
R = 232.849m [763.94']
T = 151.617m [497.43']
L = 268.788m [881.85']

CURVE # 37
P.I. STA 2+125.30
P.C. STA 2+039.93
P.T. STA 2+203.59
 $\Delta = 40^{\circ}16'12''$
R = 232.849m [763.94']
T = 85.371m [280.09']
L = 163.656m [536.93']

CURVE # 5
P.I. STA. 17+280.78
P.C. STA. 17+153.60
P.T. STA. 17+405.19
 $\Delta = 20^{\circ}38'06''$
R = 698.550m [2291.83']
T = 127.169m [417.22']
L = 251.582m [825.40']

17+518.02 F.A. RTE. 646 =
2+000.00 CEDAR HILLS DRIVE (CO. HWY. D-28)

NOTE: PROPOSED CENTERLINE F.A. RTE. 646 INTERSECTS EXISTING CENTERLINE PAVEMENT IN PLACE (IL. RTE. 40) @ P.T. STA. 17+405.19



REVISIONS	
NAME	DATE

ILLINOIS DEPARTMENT OF TRANSPORTATION
EXISTING & PROPOSED
R.O.W. & T.E. STRIP MAP
STA. 17+236.86 TO STA. 17+572.14
SCALE: 1:600
DATE: 3/3/09
DRAWN BY: JRC, JDU
CHECKED BY: ECM