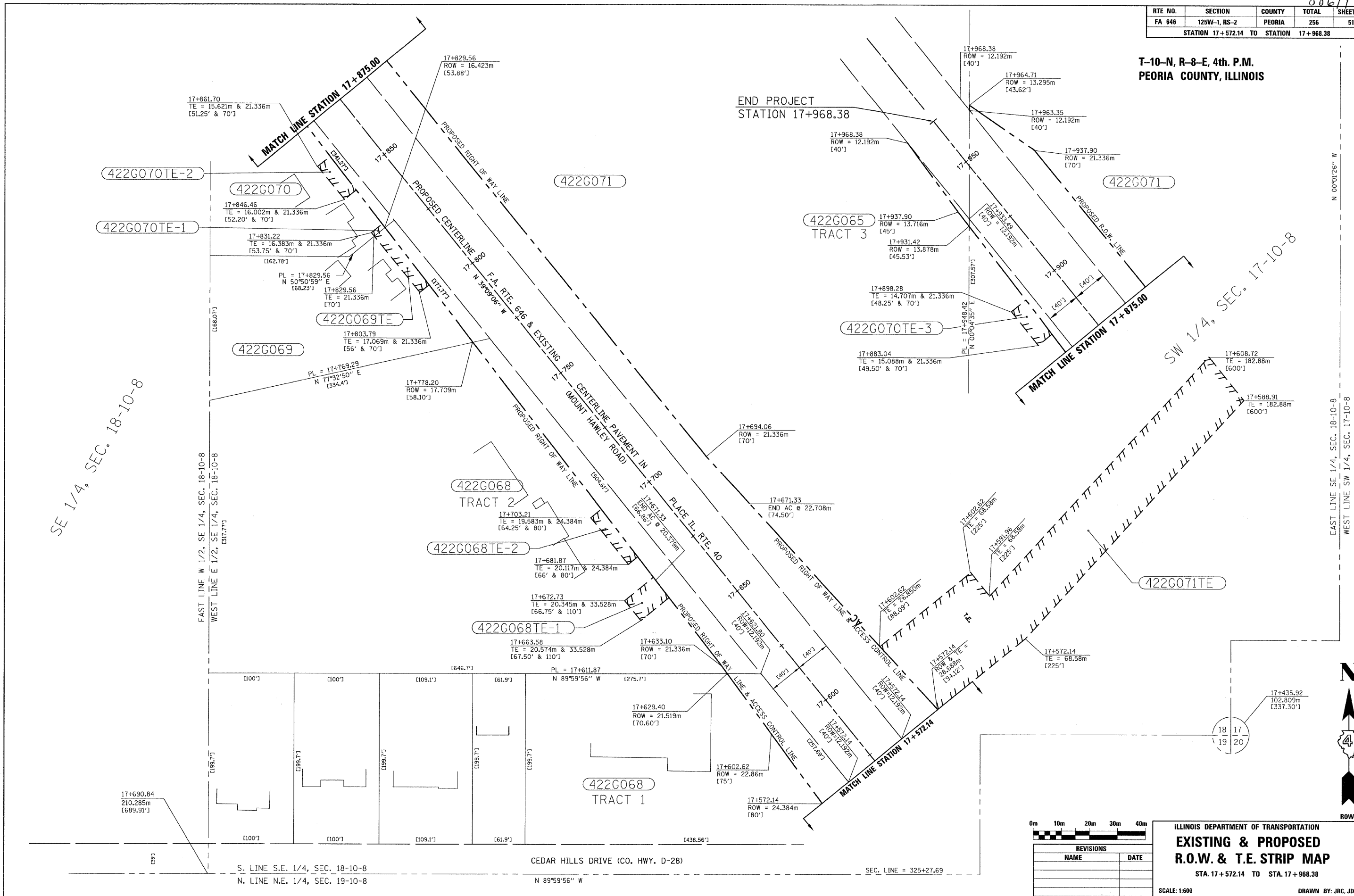


RTE NO.	SECTION	COUNTY	TOTAL	SHEET #
FA 646	125W-1, RS-2	PEORIA	256	51
STATION 17+572.14 TO STATION 17+968.38				

**T-10-N, R-8-E, 4th. P.M.
PEORIA COUNTY, ILLINOIS**



SE 1/4, SEC. 18-10-8

SW 1/4, SEC. 17-10-8

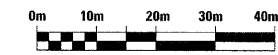
EAST LINE W 1/2, SE 1/4, SEC. 18-10-8
WEST LINE E 1/2, SE 1/4, SEC. 18-10-8

EAST LINE SE 1/4, SEC. 18-10-8
WEST LINE SW 1/4, SEC. 17-10-8

S. LINE S.E. 1/4, SEC. 18-10-8
N. LINE N.E. 1/4, SEC. 19-10-8

CEDAR HILLS DRIVE (CO. HWY. D-28)

SEC. LINE = 325+27.69



REVISIONS	
NAME	DATE

ILLINOIS DEPARTMENT OF TRANSPORTATION
**EXISTING & PROPOSED
R.O.W. & T.E. STRIP MAP**
STA. 17+572.14 TO STA. 17+968.38

SCALE: 1:600
DATE: 3/3/09
DRAWN BY: JRC, JDU
CHECKED BY: ECM

