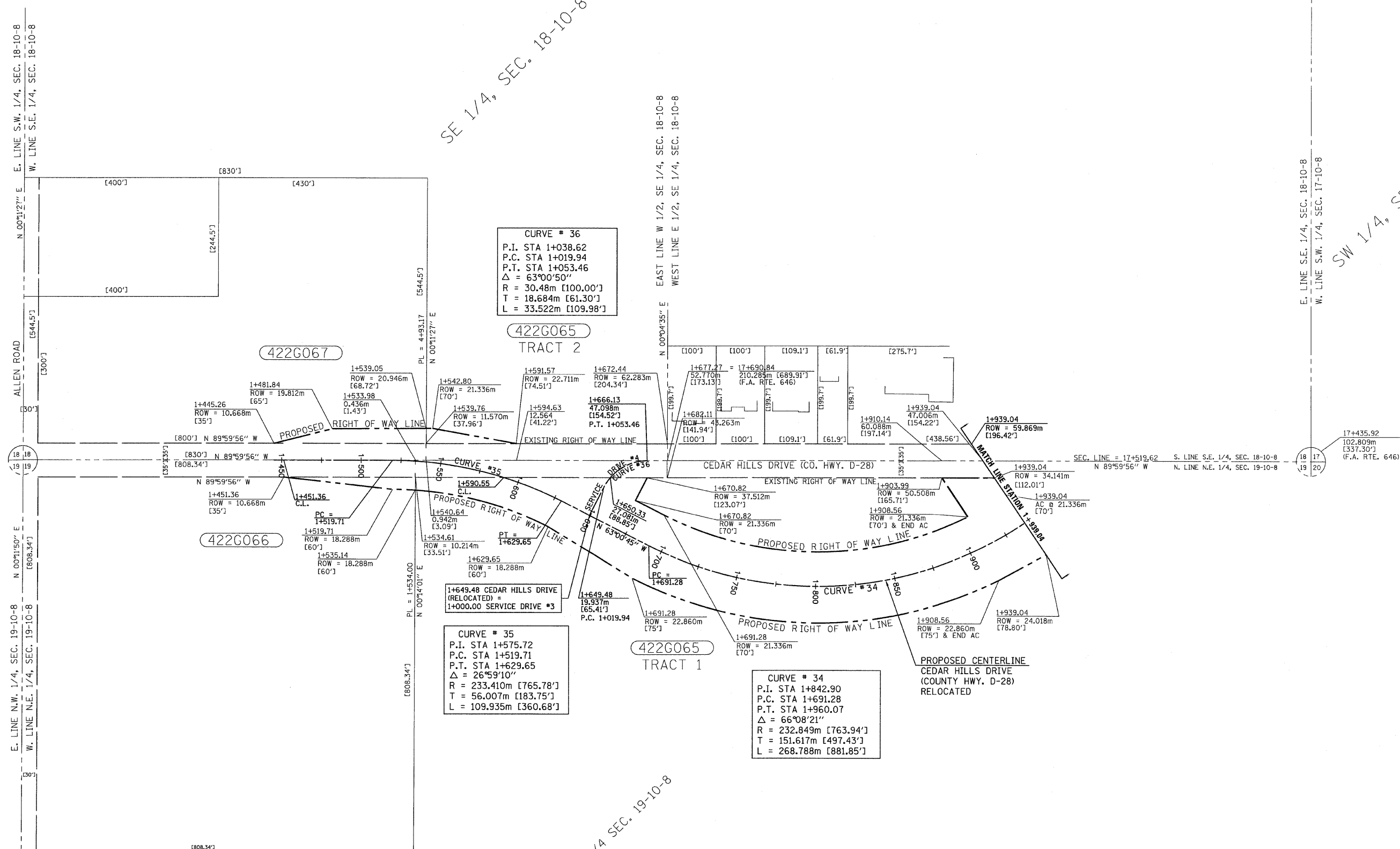


T-10-N, R-8-E, 4th. P.M.
PEORIA COUNTY, ILLINOIS

RTE NO.	SECTION	COUNTY	TOTAL	SHEET #
FA 646	125W-1, RS-2	PEORIA	256	52
STATION 1+445.26 TO STATION 1+939.04				



SE 1/4, SEC. 18-10-8

SW 1/4, SEC. 17-10-8

NE 1/4 SEC. 19-10-8

CURVE # 36
P.I. STA 1+038.62
P.C. STA 1+019.94
P.T. STA 1+053.46
 $\Delta = 63^{\circ}00'50''$
R = 30.48m [100.00']
T = 18.684m [61.30']
L = 33.522m [109.98']

CURVE # 35
P.I. STA 1+575.72
P.C. STA 1+519.71
P.T. STA 1+629.65
 $\Delta = 26^{\circ}59'10''$
R = 233.410m [765.78']
T = 56.007m [183.75']
L = 109.935m [360.68']

CURVE # 34
P.I. STA 1+842.90
P.C. STA 1+691.28
P.T. STA 1+960.07
 $\Delta = 66^{\circ}08'21''$
R = 232.849m [763.94']
T = 151.617m [497.43']
L = 268.788m [881.85']



REVISIONS	
NAME	DATE

ILLINOIS DEPARTMENT OF TRANSPORTATION
**EXISTING & PROPOSED
R.O.W. & T.E. STRIP MAP**
STA. 1+445.26 TO STA. 1+939.04
SCALE: 1:1200
DATE: 3/13/09
DRAWN BY: JRC, JDU
CHECKED BY: ECM

