

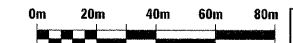
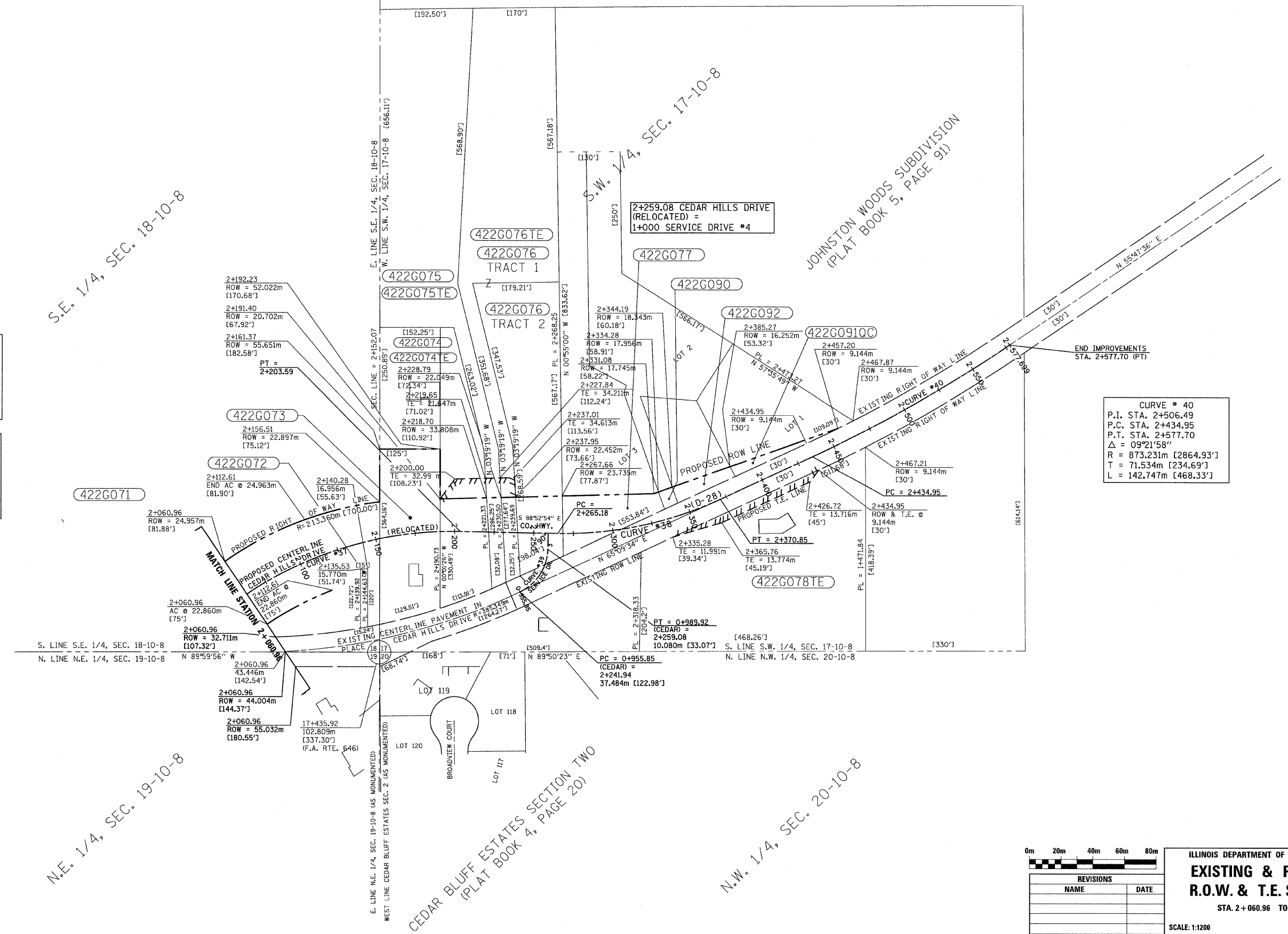
RTE NO.	SECTION	COUNTY	TOTAL	SHEET #
FA 646	125W-1, RS-2	PEORIA	256	53
STATION 2+060.96 TO		STATION	2+577.70	

**CURVE # 37**  
P.I. STA. 2+125.30  
P.C. STA. 2+039.93  
P.T. STA. 2+203.59  
 $\Delta = 40^{\circ}16'12''$   
R = 232.285m [763.94']  
T = 85.731m [280.09']  
L = 163.656m [536.93']

**CURVE # 38**  
P.I. STA. 2+318.93  
P.C. STA. 2+265.18  
P.T. STA. 2+370.85  
 $\Delta = 25^{\circ}57'32''$   
R = 233.230m [765.19']  
T = 53.758m [176.37']  
L = 105.668m [346.68']

**CURVE # 39**  
P.I. STA. 0+974.92  
P.C. STA. 0+955.85  
P.T. STA. 0+989.92  
 $\Delta = 64^{\circ}02'28''$   
R = 30.480m [100.00']  
T = 19.062m [62.54']  
L = 34.067m [111.77']

**CURVE # 40**  
P.I. STA. 2+506.49  
P.C. STA. 2+434.95  
P.T. STA. 2+577.70  
 $\Delta = 09^{\circ}21'58''$   
R = 873.231m [2864.93']  
T = 71.534m [234.69']  
L = 142.747m [468.33']



REVISIONS	
NAME	DATE

ILLINOIS DEPARTMENT OF TRANSPORTATION  
**EXISTING & PROPOSED**  
**R.O.W. & T.E. STRIP MAP**  
STA. 2+060.96 TO STA. 2+577.70  
SCALE: 1:1200  
DATE: 3/13/09  
DRAWN BY: JRC, JDU  
CHECKED BY: ECM

