

RTE NO.	SECTION	COUNTY	TOTAL	SHEET #
FA 646	125 W-1, RS-2	PEORIA	256	55

STAGE I GENERAL NOTES

- CLEARING AND BUILDING REMOVAL ON THE WEST SIDE OF IL. RTE. 40.
 - DEMOLITION & CLEARING EAST OF IL. RTE. 40 MAY BE DONE SUBJECT TO THE APPROVAL OF THE ENGINEER AND AS LONG AS TRAFFIC CONTROL CONFLICTS ARE NOT CREATED.
- INSTALL THE CROSSROAD CULVERT AND TEMPORARY EXTENSION AT STA. 15+832. CONSTRUCT TEMPORARY PATCH. (STD. 701336) GRADE DITCH FROM DS END OF TEMPORARY CULVERT EXTENSION TO THE PROPOSED CULVERT LOCATION AT STA. 1+073 UNDER FRONTAGE ROAD NO. 3. MAINTAIN TWO-LANE TRAFFIC DURING NON-WORK HOURS. (STD. 701336)
- REMOVE THE EXISTING 0.610 m X 0.610 m BOX CULVERT AT STA. 17+597. CONSTRUCT PERMANENT PATCH (STD. 701336), MAINTAIN TWO-LANE TRAFFIC DURING NON-WORK HOURS.
- PATCH THE EXISTING PAVEMENT FROM STA. 17+300 TO THE END OF THE PROJECT. CLEAN, PRIME AND PLACE THE LEVELING BINDER ON THE EXISTING PAVEMENT FROM RT. 17+250 TO THE END OF THE PROJECT.

CONSTRUCT TEMPORARY EARTH SHOULDERS FROM 17+250± ON BOTH SIDES OF IL. RTE. 40, A MINIMUM OF 1.2 m WIDE. EARTH FROM THE EXISTING FORESLOPES OR BACKSLOPES SHALL BE USED.

STD. 701306 - CLEANING PAVEMENT AND RESURFACING
 STD. 701336 - PATCHING
 STD. 701326 - SHOULDER WORK

- CONSTRUCT EARTHWORK, CULVERTS, SUB-BASE GRANULAR MATERIAL, FULL-DEPTH HOT-MIX ASPHALT PAVEMENT, HOT-MIX ASPHALT SHOULDERS, TEMPORARY CULVERTS AND OTHER RELATED ITEMS FROM:
 - 15+714 TO 16+444
GAP 16+444 TO 16+615 (REFER TO SHEET S-3 FOR CONSTRUCTION DETAILS.)
 - 16+615 TO 17+200
 - 17+200 TO 17+300 - CONSTRUCT THE SOUTHBOUND LANES AND MEDIAN OF FULL DEPTH PAVEMENT. (SEE CROSS SECTIONS FOR DETAILS.)
- STD. 701326 SHALL BE USED FROM 15+714 THROUGH 15+800, STDS. 701001, 701006, 701011 AND 701301, WHICHEVER IS APPLICABLE FOR THE OPERATIONS, SHALL BE USED FROM 15+800 THROUGH 17+300.

THE FINAL DITCH ON THE RIGHT SIDE OF IL 40 FROM HICKORY GROVE RD., NORTH TO STA. 16+100±, CANNOT BE CONSTRUCTED DURING THIS STAGE. PROVIDE A TEMPORARY DITCH BETWEEN THE NEW PAVEMENT AND EXISTING PAVEMENT, WHICH DRAINS NORTH TO THE CULVERT AT 16+225.

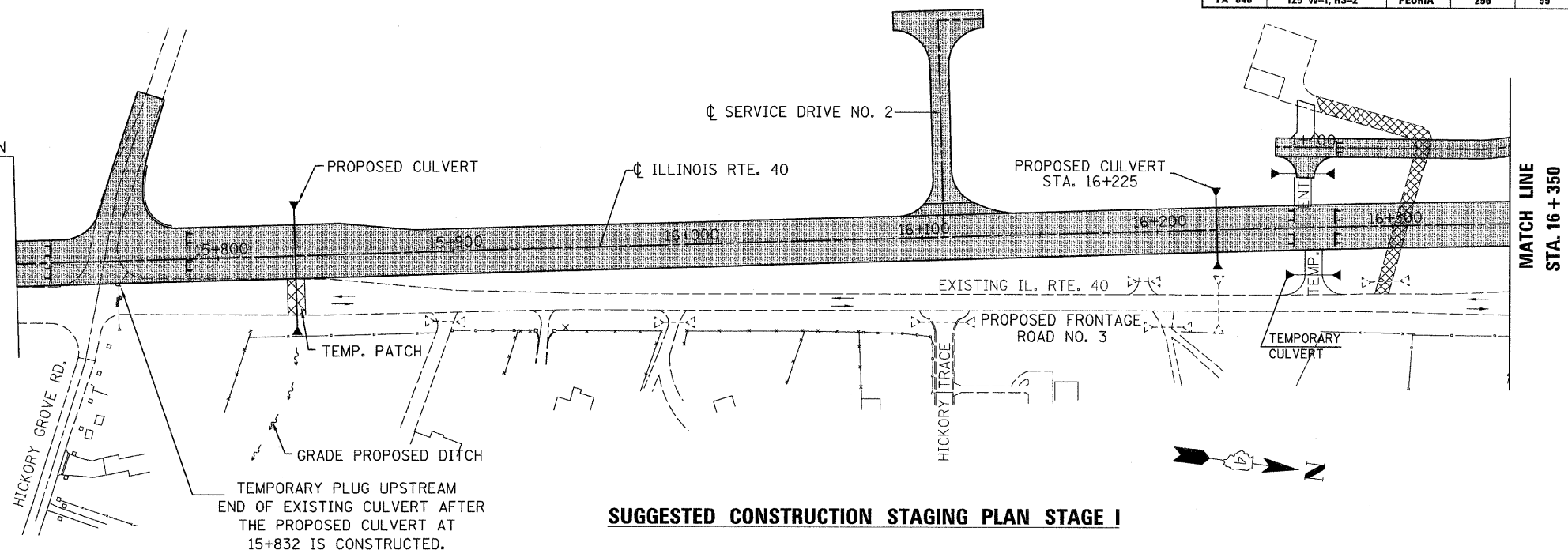
- CLOSE HICKORY GROVE RD., WEST - (STD. B.L.R. 22, CONDITION II). A DETOUR WILL NOT BE MARKED. LOCAL TRAFFIC TO USE ALLEN RD. AND EITHER ALTA RD. OR WILHELM RD. TO ACCESS IL. RTE. 40

CONSTRUCT WEST HICKORY GROVE RD. RELOCATION. THE CONSTRUCTION OF HICKORY GROVE RD. SHALL BE COORDINATED WITH THE CONSTRUCTION OF IL. RTE. 40 TO MINIMIZE THE LENGTH OF CLOSURE TIME.

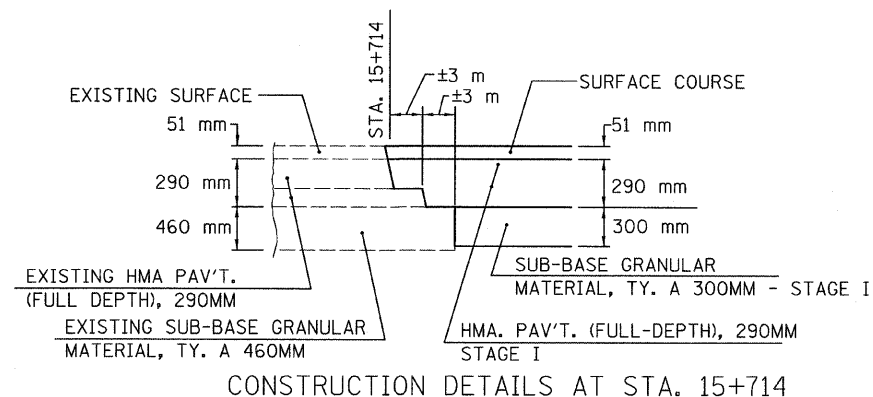
IF IT IS FOUND DESIRABLE TO OPEN HICKORY GROVE RD. PRIOR TO COMPLETING THE BINDER AND SURFACE COURSES AND PRIOR TO COMPLETING THE MAINLINE FULL DEPTH PAVEMENT, THE WORK REQUIRED WILL BE DONE IN ACCORDANCE WITH ARTICLE 107.09 OF THE STANDARD SPECIFICATIONS.

- CONSTRUCT SERVICE DRIVE NO. 2 FROM STA. 1+126 TO STA. 1+218, STA. 1+387 TO STA. 1+890, INCLUDING THE NORTH LEG OF SERVICE DRIVE NO. 2.
- CONSTRUCT SERVICE DRIVE NO. 5 (LT. STA. 17+078).

BEGIN CONSTRUCTION STA. 15+714 - STAGE I



SUGGESTED CONSTRUCTION STAGING PLAN STAGE I



STAGE I GENERAL NOTES, CONT.

- CONSTRUCT THE HOT-MIX ASPHALT PAVEMENT (FULL-DEPTH), HOT-MIX ASPHALT BASE COURSE AND HOT-MIX ASPHALT BASE COURSE WIDENING ON THE WEST SIDE OF IL. RTE. 40 FROM 17+300 TO THE END OF THE PROJECT. (STD. 701326) THE HOT-MIX ASPHALT PAVEMENT (FULL-DEPTH), HOT-MIX ASPHALT BASE COURSE AND BASE COURSE WIDENING FROM 17+300 TO THE END OF THE PROJECT SHALL BE DONE IN TWO PHASES: SOUTH OF CEDAR HILLS DRIVE AND NORTH OF CEDAR HILLS DRIVE IT MAKES NO DIFFERENCE WHICH AREA IS WIDENED FIRST, HOWEVER, THE HOT-MIX ASPHALT PAVEMENT (FULL-DEPTH), HOT-MIX ASPHALT BASE COURSE OR HOT-MIX ASPHALT BASE COURSE WIDENING SHALL BE CONSTRUCTED FLUSH WITH THE ADJACENT LEVELING BINDER IN ONE AREA BEFORE STARTING WIDENING OPERATIONS IN THE OTHER AREA. AFTER THE PROPOSED PAVEMENT, BASE AND BASE COURSE WIDENING HAS BEEN CONSTRUCTED FLUSH WITH THE LEVELING BINDER, THE HOT-MIX ASPHALT BINDER COURSE SHALL BE PLACED FROM 17+300± TO THE END OF THE PROJECT.
- NOTE: ALSO REFER TO THE STAGING DETAILS FOR THE CONNECTION OF RELOCATED CEDAR HILLS DRIVE TO IL. RTE. 40 SHEETS S-9 THRU S-11.
- REMOVE THE EXISTING CULVERT AT STA. 16+668 AND INSTALL THE TEMPORARY CULVERT. (STD. 701306 OR 701336)
 - CONSTRUCT THE WEST LEG OF THE CEDAR HILLS DRIVE RELOCATION AND THE CONNECTOR TO THE EXISTING CEDAR HILLS DRIVE CONSTRUCT TEMPORARY HOT-MIX ASPHALT BASE COURSE WIDENING LT. 1+550 TO 1+600 (STD. 701326 AND REFER TO STAGING DETAILS FOR CEDAR HILLS DRIVE ON SHEET NO. S-4).

- CONSTRUCT TEMPORARY ENTRANCES FROM EXISTING IL. RTE. 40 ACROSS THE FULL-DEPTH HOT-MIX ASPHALT PAVEMENT TO THE COMMERCIAL AREAS AT COMMERCIAL 16+267, 16+436, 16+625. (STD. 701326)
- CONSTRUCT A TEMPORARY CONNECTION FROM RELOCATED IL. RTE. 40 TO EXISTING IL. RTE. 40 OPPOSITE TIMBERDALE DRIVE, STATION 16+973. (STD. 701326)
- TEMPORARY DITCHES AND SLOPES ARE REQUIRED AT VARIOUS LOCATIONS FROM RT. STATION 15+750 TO RT. STATION 17+300. REFER TO THE CROSS SECTIONS.
- WHEN RELOCATED CEDAR HILLS DRIVE (WEST) IS OPENED TO TRAFFIC, REMOVE THE PORTIONS OF OLD CEDAR HILLS DRIVE AS SHOWN, REMOVE THE DETOUR RUN-AROUND AND CONSTRUCT THE CUL-DE-SAC. (STD. 701326)

LEGEND

	EXISTING PAVEMENTS
	PROPOSED PAVEMENTS
	PREVIOUSLY CONSTRUCTED PAVEMENT
	EXISTING ENTRANCE TO BE CLOSED
	EXISTING ENTRANCE TO REMAIN
	PROPOSED ENTRANCE
	TRAFFIC FLOW
	TYPE III BARRICADE
	EXISTING CULVERT
	PROPOSED CULVERT
	PREVIOUSLY CONSTRUCTED CULVERT
	BUILDING REMOVAL
	PAVEMENT REMOVAL

REVISIONS	
NAME	DATE

ILLINOIS DEPARTMENT OF TRANSPORTATION

STAGE CONSTRUCTION ILLINOIS ROUTE 40 STAGE I

SCALE: NONE
DATE: 03/13/09

DRAWN BY: JRC, JDU
CHECKED BY: ECM

S-2