

SUGGESTED CONSTRUCTION SEQUENCE  
(DURING STAGE III) (EAST OF IL 40)

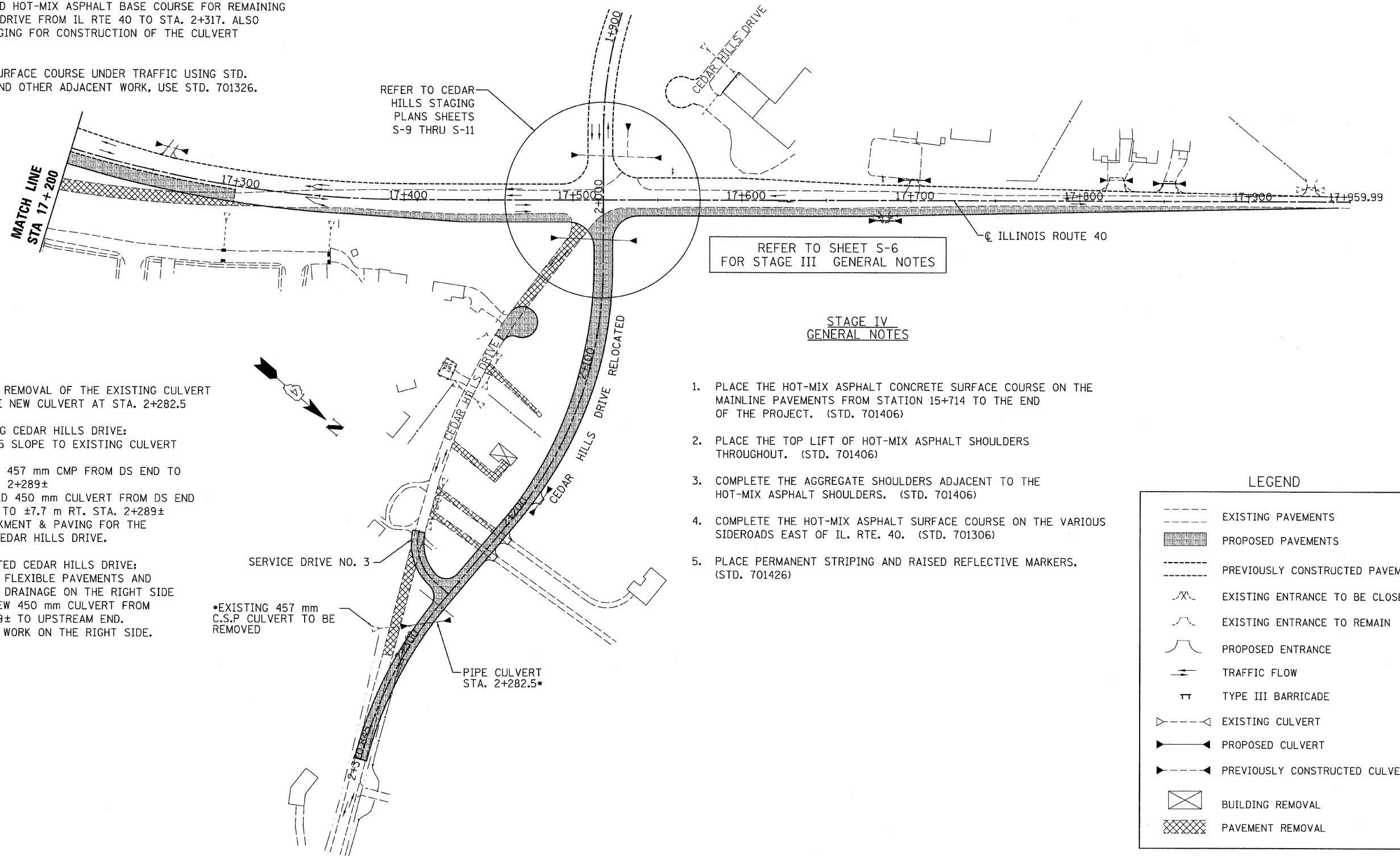
WIDEN CEDAR HILLS DRIVE FROM LT. STA. 2+317 TO THE 300 mm STUB AT 2+415 WITH HOT-MIX ASPHALT BASE COURSE WIDENING, 200 mm.

CONSTRUCT EARTHWORK AND HOT-MIX ASPHALT BASE COURSE FOR REMAINING PORTION OF CEDAR HILLS DRIVE FROM IL RTE 40 TO STA. 2+317. ALSO REFER TO SUGGESTED STAGING FOR CONSTRUCTION OF THE CULVERT AT STA. 2+282.5

FINISH THE BINDER AND SURFACE COURSE UNDER TRAFFIC USING STD. 701306. FOR SHOULDERS AND OTHER ADJACENT WORK, USE STD. 701326.

**SUGGESTED CONSTRUCTION STAGING PLAN**  
**STAGE III**  
**SUGGESTED CONSTRUCTION STAGING GENERAL NOTES**  
**STAGE IV**

RTE NO.	SECTION	COUNTY	TOTAL	SHEET NO.
FA 646	125W-1, RS-2	PEORIA	256	61



\*SUGGESTED STAGING FOR REMOVAL OF THE EXISTING CULVERT AND INSTALLATION OF THE NEW CULVERT AT STA. 2+282.5

WITH TRAFFIC ON EXISTING CEDAR HILLS DRIVE:

1. EXCAVATE AT 1:1.5 SLOPE TO EXISTING CULVERT RT. STA. 2+289±.
2. REMOVE EXISTING 457 mm CMP FROM DS END TO ±42.7 m RT. STA. 2+289±.
3. INSTALL PROPOSED 450 mm CULVERT FROM DS END LT. STA. 2+269± TO ±7.7 m RT. STA. 2+289±.
4. COMPLETE EMBANKMENT & PAVING FOR THE RELOCATION OF CEDAR HILLS DRIVE.

WITH TRAFFIC ON RELOCATED CEDAR HILLS DRIVE:

1. REMOVE EXISTING FLEXIBLE PAVEMENTS AND ESTABLISH DITCH DRAINAGE ON THE RIGHT SIDE.
2. COMPLETE THE NEW 450 mm CULVERT FROM ±7.7 m RT. 2+289± TO UPSTREAM END.
3. COMPLETE EARTH WORK ON THE RIGHT SIDE.

- REFER TO SHEET S-6 FOR STAGE III GENERAL NOTES
- STAGE IV GENERAL NOTES
1. PLACE THE HOT-MIX ASPHALT CONCRETE SURFACE COURSE ON THE MAINLINE PAVEMENTS FROM STATION 15+714 TO THE END OF THE PROJECT. (STD. 701406)
  2. PLACE THE TOP LIFT OF HOT-MIX ASPHALT SHOULDERS THROUGHOUT. (STD. 701406)
  3. COMPLETE THE AGGREGATE SHOULDERS ADJACENT TO THE HOT-MIX ASPHALT SHOULDERS. (STD. 701406)
  4. COMPLETE THE HOT-MIX ASPHALT SURFACE COURSE ON THE VARIOUS SIDEROADS EAST OF IL. RTE. 40. (STD. 701306)
  5. PLACE PERMANENT STRIPING AND RAISED REFLECTIVE MARKERS. (STD. 701426)

**LEGEND**

	EXISTING PAVEMENTS
	PROPOSED PAVEMENTS
	PREVIOUSLY CONSTRUCTED PAVEMENT
	EXISTING ENTRANCE TO BE CLOSED
	EXISTING ENTRANCE TO REMAIN
	PROPOSED ENTRANCE
	TRAFFIC FLOW
	TYPE III BARRICADE
	EXISTING CULVERT
	PROPOSED CULVERT
	PREVIOUSLY CONSTRUCTED CULVERT
	BUILDING REMOVAL
	PAVEMENT REMOVAL

REVISIONS	
NAME	DATE

ILLINOIS DEPARTMENT OF TRANSPORTATION  
**STAGE CONSTRUCTION**  
**ILLINOIS ROUTE 40**  
**STAGE III & IV**

SCALE: NONE  
DATE: 03/13/09

DRAWN BY: JRC, JDU  
CHECKED BY: ECM

S-8