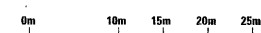
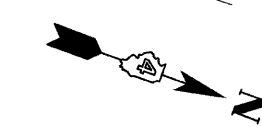
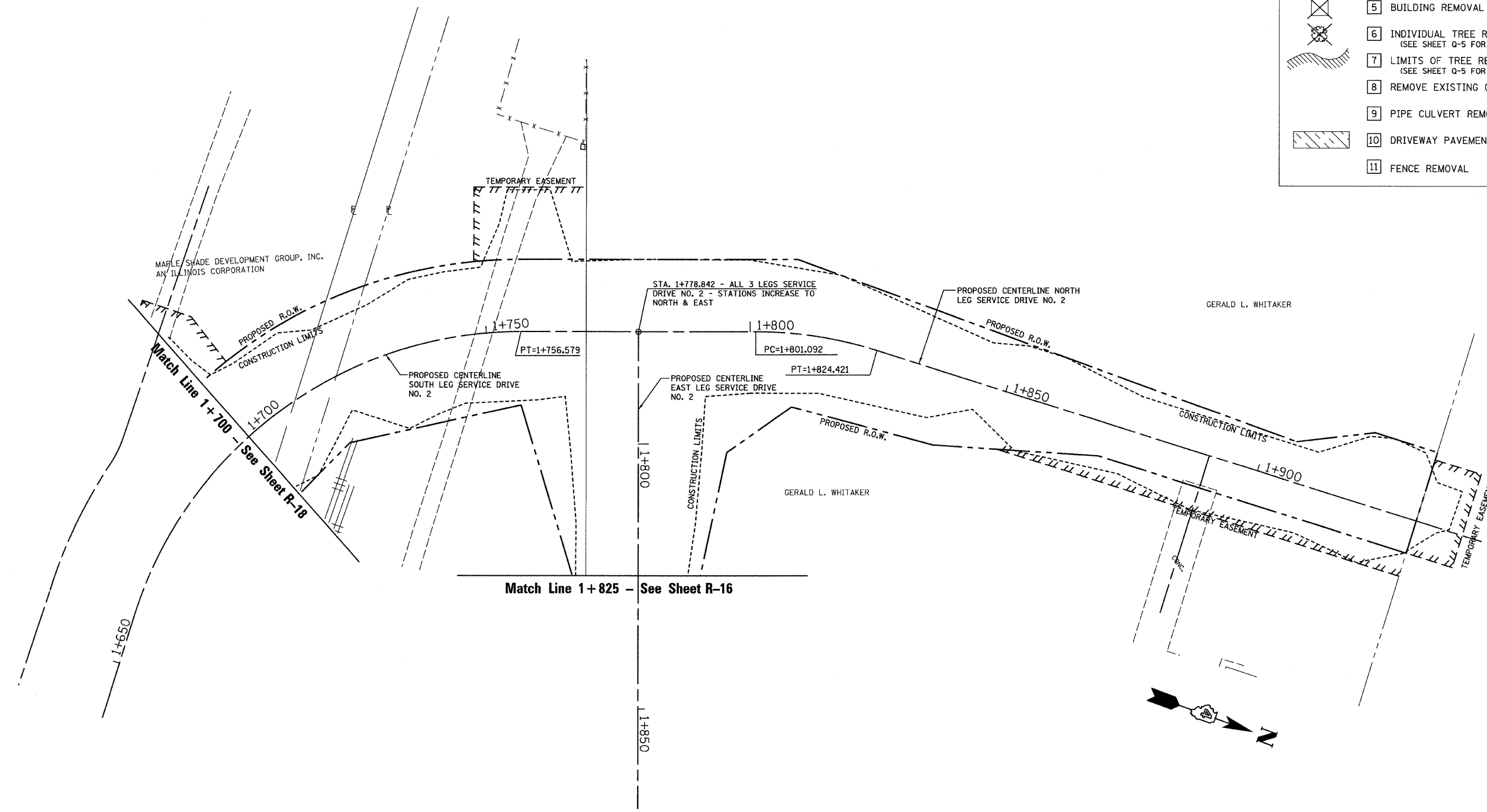


RTE NO.	SECTION	COUNTY	TOTAL	SHEET #
FA 646	125W-1, RS-2	PEORIA	256	81
STATION 1+700 TO STATION 1+931.47				

**REMOVAL LEGEND**

	1 COMBINATION CURB & GUTTER REMOVAL
	2 PAVEMENT REMOVAL (RIGID)
	3 PAVEMENT REMOVAL (FLEXIBLE)
	±305 mm WIDE 4 PAVED SHOULDER REMOVAL (SPECIAL) (meter)
	5 BUILDING REMOVAL
	6 INDIVIDUAL TREE REMOVAL (UNITS) (SEE SHEET Q-5 FOR TABULATION)
	7 LIMITS OF TREE REMOVAL, HECTARES (SEE SHEET Q-5 FOR TABULATION)
	8 REMOVE EXISTING CULVERTS (meter)
	9 PIPE CULVERT REMOVAL (EACH)
	10 DRIVEWAY PAVEMENT REMOVAL
	11 FENCE REMOVAL



REVISIONS	
NAME	DATE

ILLINOIS DEPARTMENT OF TRANSPORTATION

**EXISTING/REMOVAL**

**ILLINOIS ROUTE 40**

SERVICE DRIVE NO. 2

STA. 1+700 TO STA. 1+931.47

SCALE: 1:400

DATE: 03/13/09

DRAWN BY: JRC, JDU

CHECKED BY: ECM