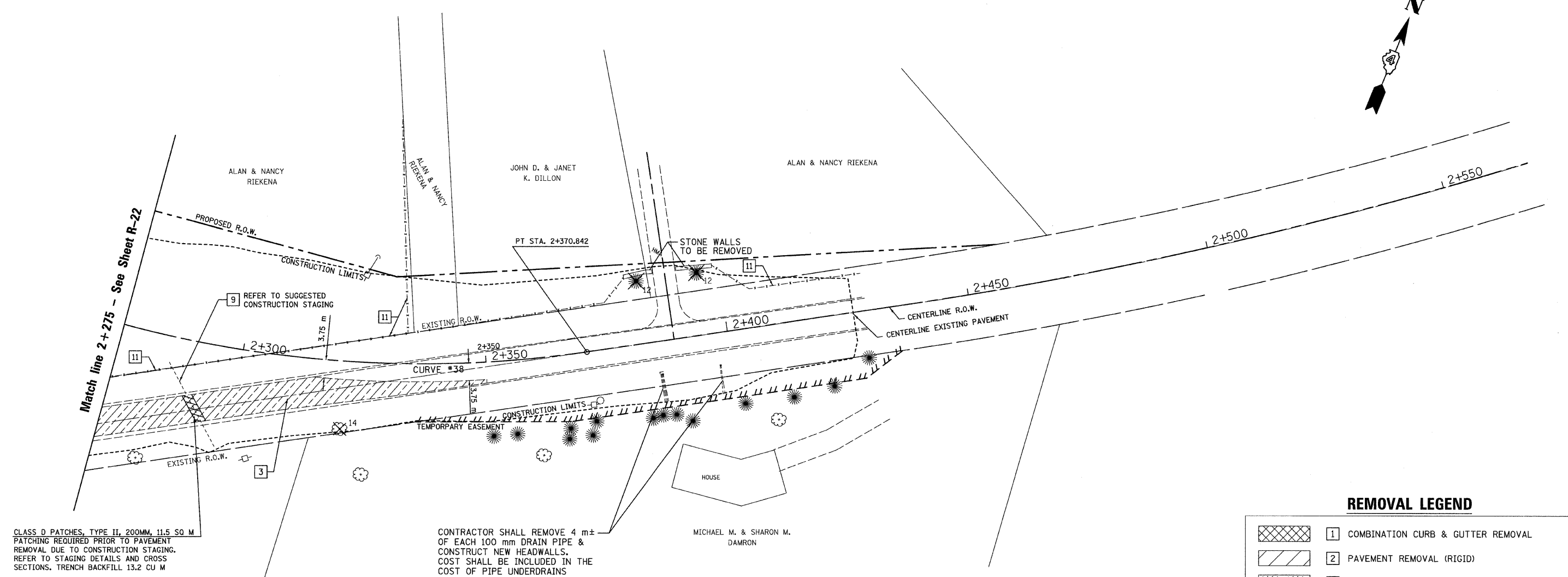


SEC. 17 T.10N., R.8E., 4th P.M.

RTE NO.	SECTION	COUNTY	TOTAL	SHEET #
FA 646	125W-1,RS-2	PEORIA	256	87
STATION 2+275 TO STATION 2+425				



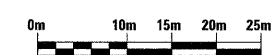
CLASS D PATCHES, TYPE II, 200MM, 11.5 SQ M  
 PATCHING REQUIRED PRIOR TO PAVEMENT  
 REMOVAL DUE TO CONSTRUCTION STAGING.  
 REFER TO STAGING DETAILS AND CROSS  
 SECTIONS. TRENCH BACKFILL 13.2 CU M

CONTRACTOR SHALL REMOVE 4 m±  
 OF EACH 100 mm DRAIN PIPE &  
 CONSTRUCT NEW HEADWALLS.  
 COST SHALL BE INCLUDED IN THE  
 COST OF PIPE UNDERDRAINS  
 100MM.

NOTE: REMOVAL OF STONE WALLS SHALL BE INCLUDED  
 IN THE COST OF FENCE REMOVAL.

**REMOVAL LEGEND**

	1 COMBINATION CURB & GUTTER REMOVAL
	2 PAVEMENT REMOVAL (RIGID)
	3 PAVEMENT REMOVAL (FLEXIBLE)
	±305 mm WIDE 4 PAVED SHOULDER REMOVAL (SPECIAL) (meter)
	5 BUILDING REMOVAL
	6 INDIVIDUAL TREE REMOVAL (UNITS) (SEE SHEET Q-5 FOR TABULATION)
	7 LIMITS OF TREE REMOVAL, HECTARES (SEE SHEET Q-5 FOR TABULATION)
	8 REMOVE EXISTING CULVERTS (meter)
	9 PIPE CULVERT REMOVAL (EACH)
	10 DRIVEWAY PAVEMENT REMOVAL
	11 FENCE REMOVAL



REVISIONS	
NAME	DATE

ILLINOIS DEPARTMENT OF TRANSPORTATION

**EXISTING/REMOVAL  
ILLINOIS ROUTE 40**

STA. 2+275 TO STA. 2+425

SCALE: 1:400  
 DATE: 03/13/09

DRAWN BY: JRC, JDU  
 CHECKED BY: ECM