

T.B.M. "8" - RR SPIKE IN POWER POLE  
 STA. 15+926±, 33 m± RT.  
 ELEV. = 239.939

T.B.M. "9" - TOP VALVE STEM FIRE HYD.  
 STA. 16+101±, 39 m± RT.  
 ELEV. = 239.442

**LEGEND - EROSION CONTROL**

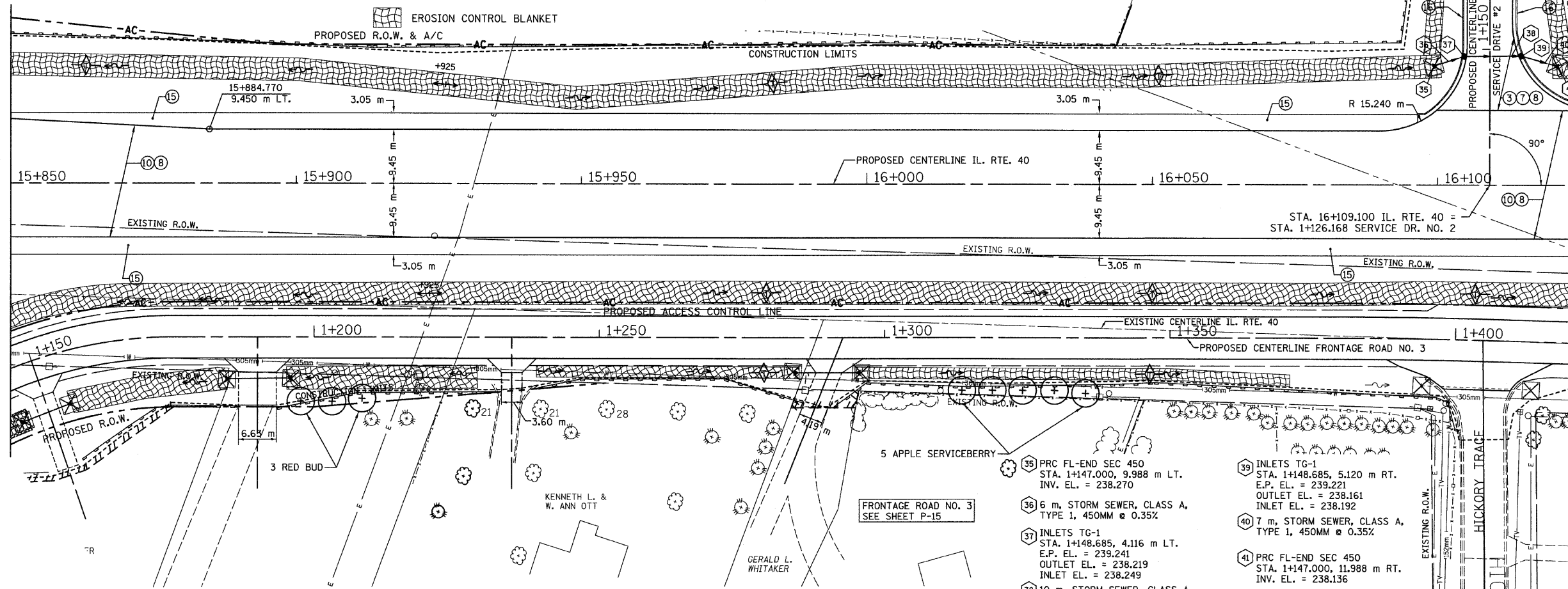
- ☒ INLET & PIPE PROTECTION
- ◇ TEMPORARY DITCH CHECKS
- PERIMETER EROSION CONTROL BARRIER
- ▨ EROSION CONTROL BLANKET

**SEC. 29 T.10N., R.8E., 4th P.M.**

RTE NO.	SECTION	COUNTY	TOTAL	SHEET #
FA 646	125W-1, RS-2	PEORIA	256	90
STATION 15+850 TO STATION 16+125				

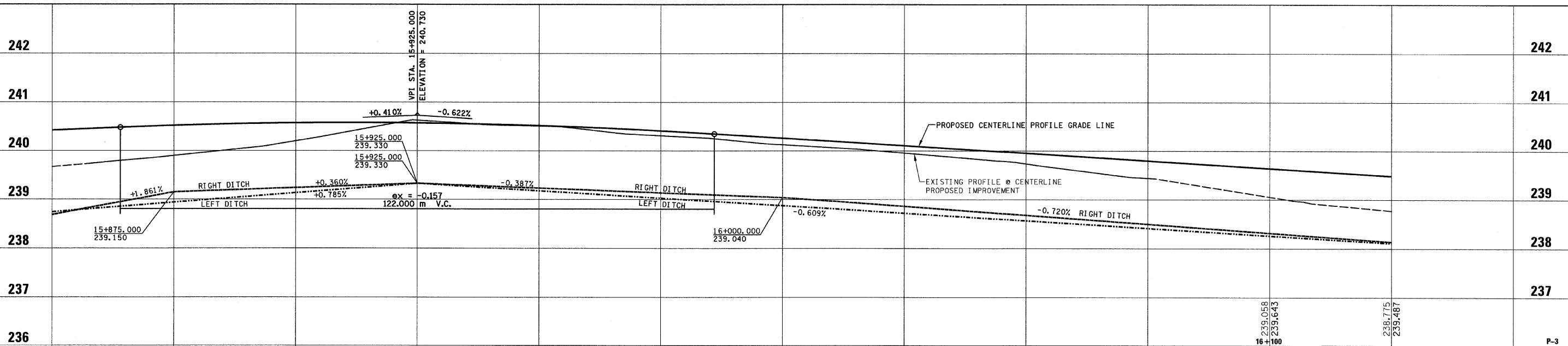
Match Line 15 + 850 - See Sheet P-2

Match Line 16 + 125 - See Sheet P-4



**LEGEND**

- ① FABRIC FORMED CONCRETE REVETMENT MAT
- ② AGGREGATE BASE COURSE
- ③ HOT-MIX ASPHALT BASE COURSE
- ④ HOT-MIX ASPHALT BASE COURSE WIDENING
- ⑤ AGGREGATE SURFACE COURSE
- ⑥ LEVELING BINDER (MACHINE METHOD)
- ⑦ HOT-MIX ASPHALT BINDER COURSE
- ⑧ POLYMERIZED HOT-MIX ASPHALT SURFACE COURSE
- ⑨ HOT-MIX ASPHALT REMOVAL-BUTT JOINT
- ⑩ HOT-MIX ASPHALT PAVEMENT (FULL-DEPTH)
- ⑪ PORTLAND CEMENT CONCRETE PAVEMENT
- ⑫ PORTLAND CEMENT CONCRETE SIDEWALK
- ⑬ HOT-MIX ASPHALT REMOVAL (VAR. DEPTH)
- ⑭ AGGREGATE SHOULDERS
- ⑮ HOT-MIX ASPHALT SHOULDERS
- ⑯ COMBINATION CONCRETE CURB AND GUTTER



REVISIONS	
NAME	DATE

ILLINOIS DEPARTMENT OF TRANSPORTATION  
**PLAN AND PROFILE**  
**ILLINOIS ROUTE 40**  
 STA. 15 + 850 TO STA. 16 + 125

SCALE: 1:400 H / 1:40 V  
 DATE: 03/13/09  
 DRAWN BY: JRC, JDU  
 CHECKED BY: ECM