

T.B.M. "10" - TOP VALVE STEM FIRE HYD.  
 STA. 16+429±, 46 m± RT.  
 ELEV. = 238.391

**LEGEND - EROSION CONTROL**

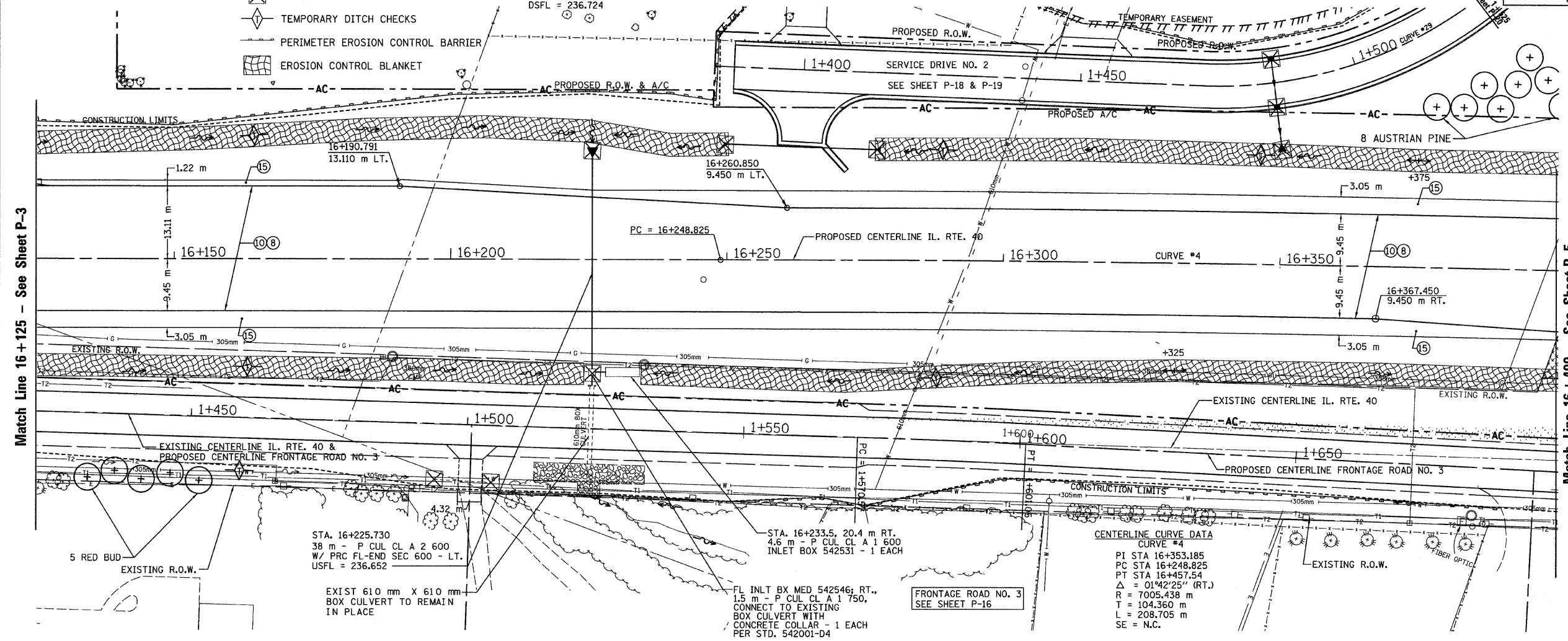
- ☒ INLET & PIPE PROTECTION
- ◇ TEMPORARY DITCH CHECKS
- PERIMETER EROSION CONTROL BARRIER
- ▨ EROSION CONTROL BLANKET

STATION 16+263.578, 20.4 m LT.  
 26.5 m - P CUL CL D 1 600  
 W/ END SECTIONS 600 - 2 EACH  
 USFL = 236.806  
 DSFL = 236.724

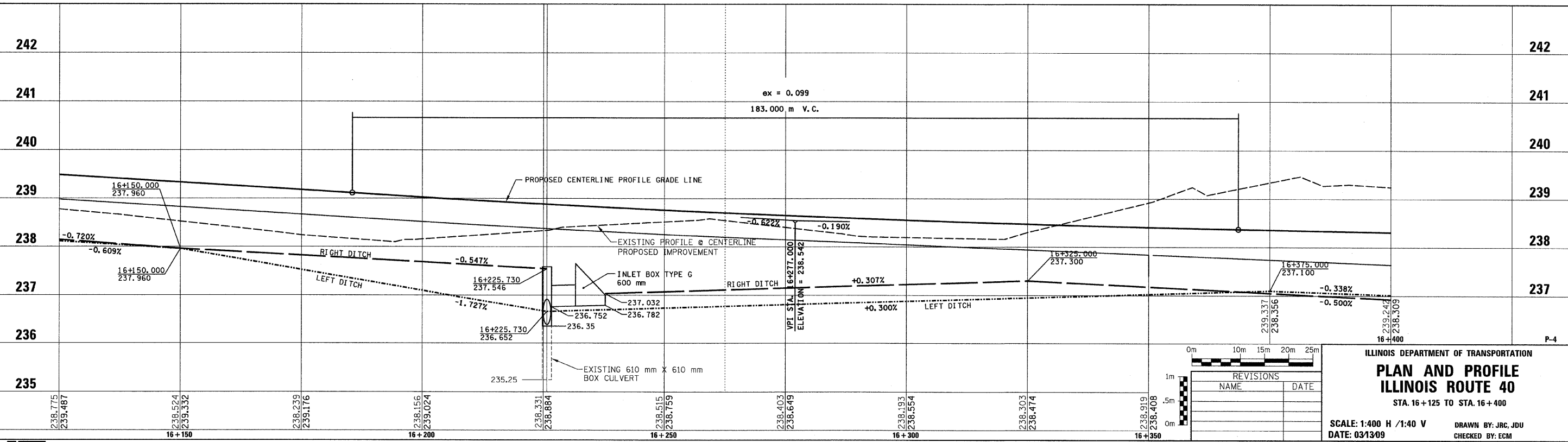
**SEC. 20, T.10N., R.8E., 4th P.M.**

RTE NO.	SECTION	COUNTY	TOTAL	SHEET #
FA 646	125W-1, RS-2	PEORIA	256	91

STATION 16+125 TO STATION 16+400



- LEGEND**
- ① FABRIC FORMED CONCRETE REVELMENT MAT
  - ② AGGREGATE BASE COURSE
  - ③ HOT-MIX ASPHALT BASE COURSE
  - ④ HOT-MIX ASPHALT BASE COURSE WIDENING
  - ⑤ AGGREGATE SURFACE COURSE
  - ⑥ LEVELING BINDER (MACHINE METHOD)
  - ⑦ HOT-MIX ASPHALT BINDER COURSE
  - ⑧ POLYMERIZED HOT-MIX ASPHALT SURFACE COURSE
  - ⑨ HOT-MIX ASPHALT REMOVAL-BUTT JOINT
  - ⑩ HOT-MIX ASPHALT PAVEMENT (FULL-DEPTH)
  - ⑪ PORTLAND CEMENT CONCRETE PAVEMENT
  - ⑫ PORTLAND CEMENT CONCRETE SIDEWALK
  - ⑬ HOT-MIX ASPHALT REMOVAL (VAR. DEPTH)
  - ⑭ AGGREGATE SHOULDERS
  - ⑮ HOT-MIX ASPHALT SHOULDERS
  - ⑯ COMBINATION CONCRETE CURB AND GUTTER



REVISIONS	
NAME	DATE

ILLINOIS DEPARTMENT OF TRANSPORTATION

**PLAN AND PROFILE**  
**ILLINOIS ROUTE 40**  
 STA. 16+125 TO STA. 16+400

SCALE: 1:400 H / 1:40 V  
 DATE: 03/13/09

DRAWN BY: JRC, JDU  
 CHECKED BY: ECM