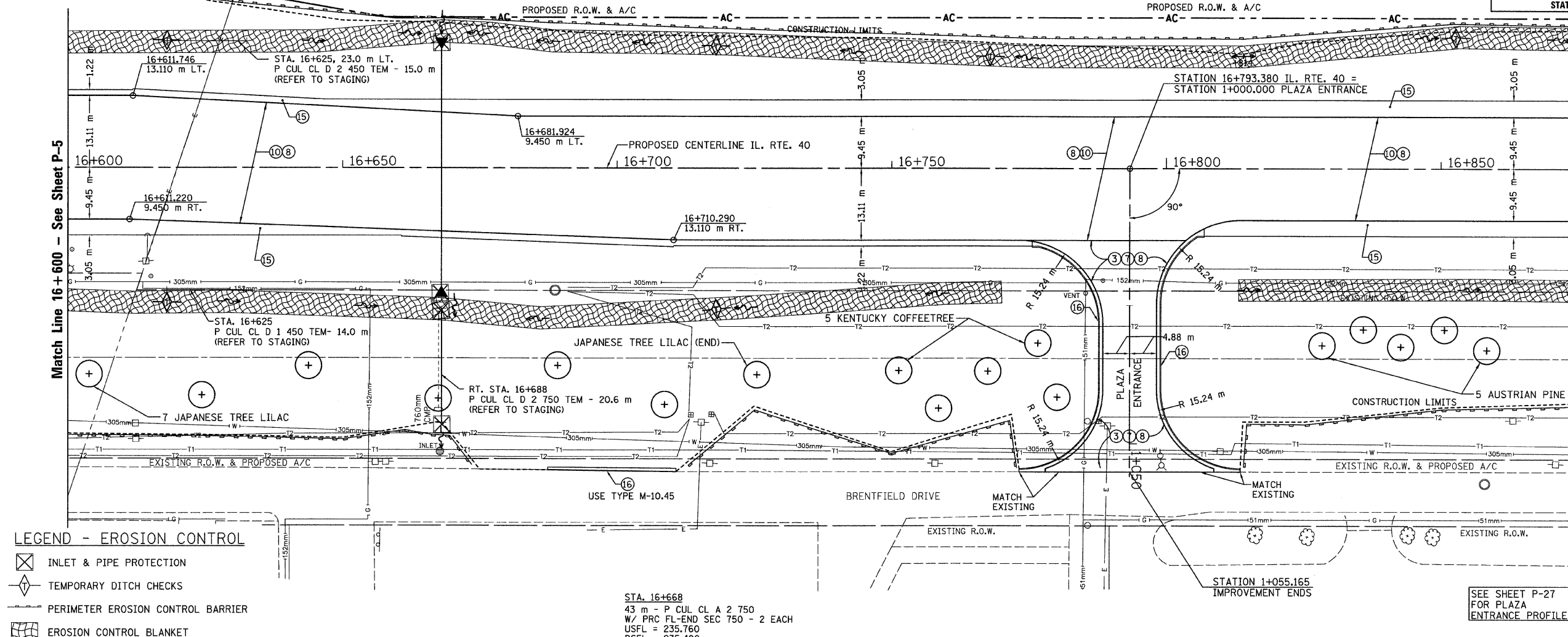


T.B.M. "11" - NW CAP BOLT FIRE HYD.  
 STA. 16+687±, 52m± RT.  
 ELEV. = 236.614

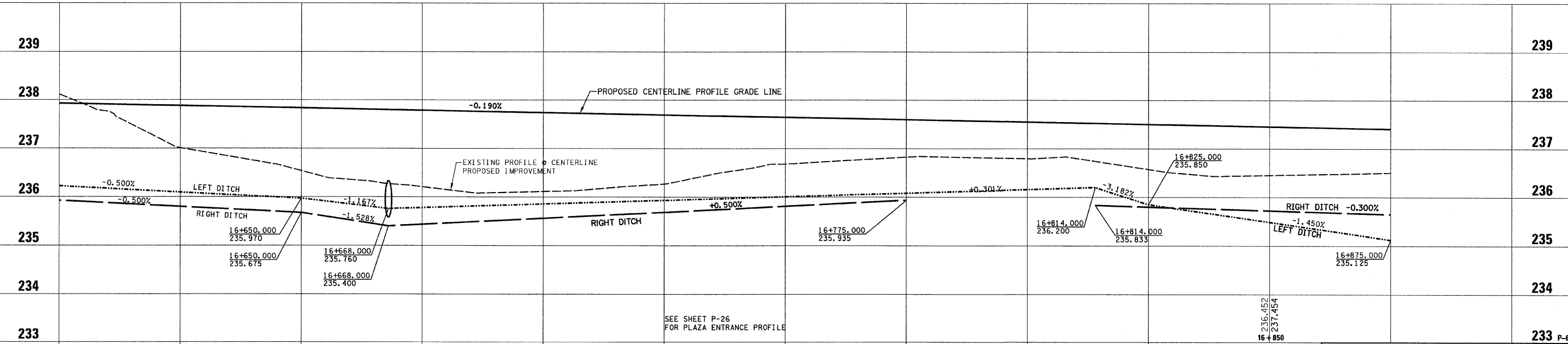
SEC. 20 T.10N., R.8E., 4th P.M.

RTE NO.	SECTION	COUNTY	TOTAL	SHEET #
FA 646	125W-1, RS-2	PEORIA	256	93
STATION 15+400 TO STATION 15+650				



- LEGEND - EROSION CONTROL**
- INLET & PIPE PROTECTION
  - TEMPORARY DITCH CHECKS
  - PERIMETER EROSION CONTROL BARRIER
  - EROSION CONTROL BLANKET

- LEGEND**
- ① FABRIC FORMED CONCRETE REVETMENT MAT
  - ② AGGREGATE BASE COURSE
  - ③ HOT-MIX ASPHALT BASE COURSE
  - ④ HOT-MIX ASPHALT BASE COURSE WIDENING
  - ⑤ AGGREGATE SURFACE COURSE
  - ⑥ LEVELING BINDER (MACHINE METHOD)
  - ⑦ HOT-MIX ASPHALT BINDER COURSE
  - ⑧ POLYMERIZED HOT-MIX ASPHALT SURFACE COURSE
  - ⑨ HOT-MIX ASPHALT REMOVAL-BUTT JOINT
  - ⑩ HOT-MIX ASPHALT PAVEMENT (FULL-DEPTH)
  - ⑪ PORTLAND CEMENT CONCRETE PAVEMENT
  - ⑫ PORTLAND CEMENT CONCRETE SIDEWALK
  - ⑬ HOT-MIX ASPHALT REMOVAL (VAR. DEPTH)
  - ⑭ AGGREGATE SHOULDERS
  - ⑮ HOT-MIX ASPHALT SHOULDERS
  - ⑯ COMBINATION CONCRETE CURB AND GUTTER



SEE SHEET P-27 FOR PLAZA ENTRANCE PROFILE

REVISIONS	
NAME	DATE

ILLINOIS DEPARTMENT OF TRANSPORTATION

**PLAN AND PROFILE**

**ILLINOIS ROUTE 40**

STA. 16+600 TO STA. 16+875

SCALE: 1:400 H / 1:40 V

DATE: 03/3/09

DRAWN BY: JRC, JDU

CHECKED BY: ECM