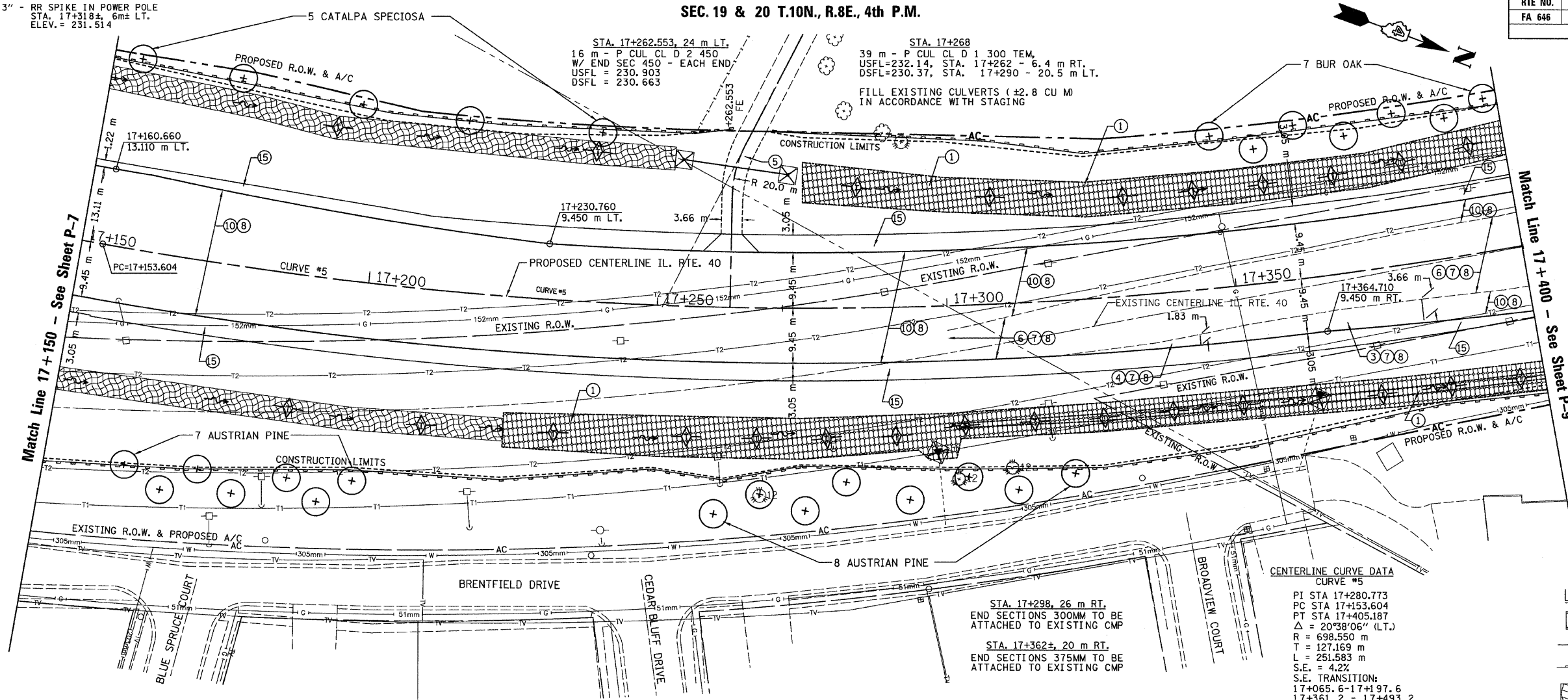


T.B.M. "13" - RR SPIKE IN POWER POLE  
 STA. 17+318±, 6m± LT.  
 ELEV. = 231.514

SEC. 19 & 20 T.10N., R.8E., 4th P.M.

RTE NO.	SECTION	COUNTY	TOTAL	SHEET #
FA 646	125W-1, RS-2	PEORIA	256	95
STATION 17+150 TO STATION 17+400				



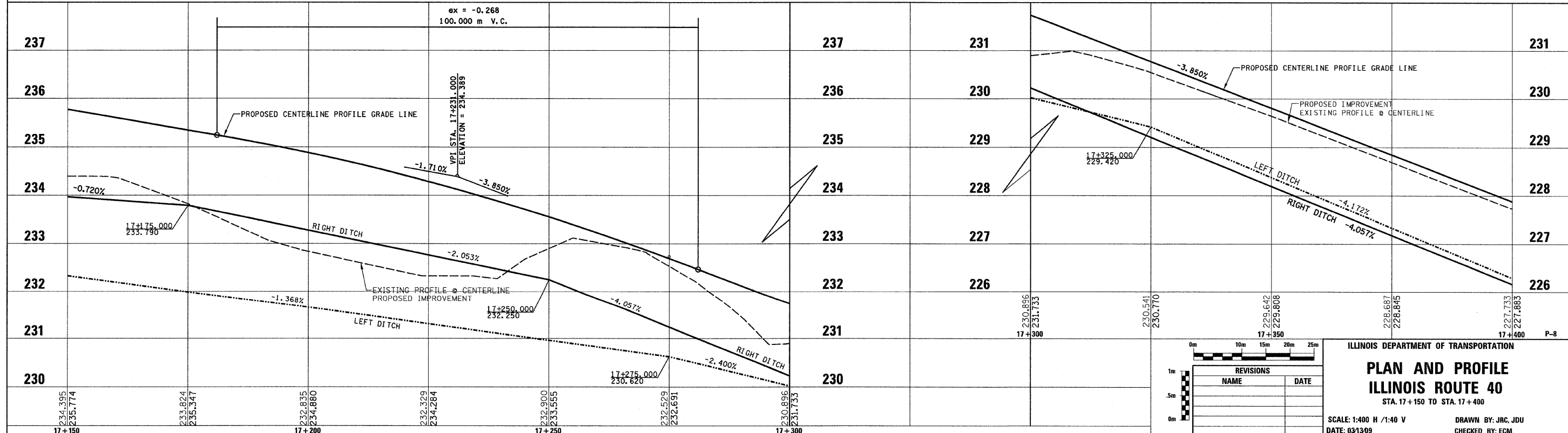
- LEGEND**
- ① FABRIC FORMED CONCRETE REVETMENT MAT
  - ② AGGREGATE BASE COURSE
  - ③ HOT-MIX ASPHALT BASE COURSE
  - ④ HOT-MIX ASPHALT BASE COURSE WIDENING
  - ⑤ AGGREGATE SURFACE COURSE
  - ⑥ LEVELING BINDER (MACHINE METHOD)
  - ⑦ HOT-MIX ASPHALT BINDER COURSE
  - ⑧ POLYMERIZED HOT-MIX ASPHALT SURFACE COURSE
  - ⑨ HOT-MIX ASPHALT REMOVAL-BUTT JOINT
  - ⑩ HOT-MIX ASPHALT PAVEMENT (FULL-DEPTH)
  - ⑪ PORTLAND CEMENT CONCRETE PAVEMENT
  - ⑫ PORTLAND CEMENT CONCRETE SIDEWALK
  - ⑬ HOT-MIX ASPHALT REMOVAL (VAR. DEPTH)
  - ⑭ AGGREGATE SHOULDERS
  - ⑮ HOT-MIX ASPHALT SHOULDERS
  - ⑯ COMBINATION CONCRETE CURB AND GUTTER

- LEGEND - EROSION CONTROL**
- ⊗ INLET & PIPE PROTECTION
  - ◇ TEMPORARY DITCH CHECKS
  - PERIMETER EROSION CONTROL BARRIER
  - ▨ EROSION CONTROL BLANKET

**CENTERLINE CURVE DATA**  
 CURVE #5  
 PI STA 17+280.773  
 PC STA 17+153.604  
 PT STA 17+405.187  
 $\Delta = 20^{\circ}38'06''$  (LT.)  
 R = 698.550 m  
 T = 127.169 m  
 L = 251.583 m  
 S.E. = 4.2%  
 S.E. TRANSITION:  
 17+065.6 - 17+197.6  
 17+361.2 - 17+493.2

STA. 17+298, 26 m RT.  
 END SECTIONS 300MM TO BE ATTACHED TO EXISTING CMP

STA. 17+362±, 20 m RT.  
 END SECTIONS 375MM TO BE ATTACHED TO EXISTING CMP



REVISIONS	
NAME	DATE

ILLINOIS DEPARTMENT OF TRANSPORTATION

**PLAN AND PROFILE**  
**ILLINOIS ROUTE 40**  
 STA. 17+150 TO STA. 17+400

SCALE: 1:400 H / 1:40 V  
 DATE: 03/13/09  
 DRAWN BY: JRC, JDU  
 CHECKED BY: ECM