

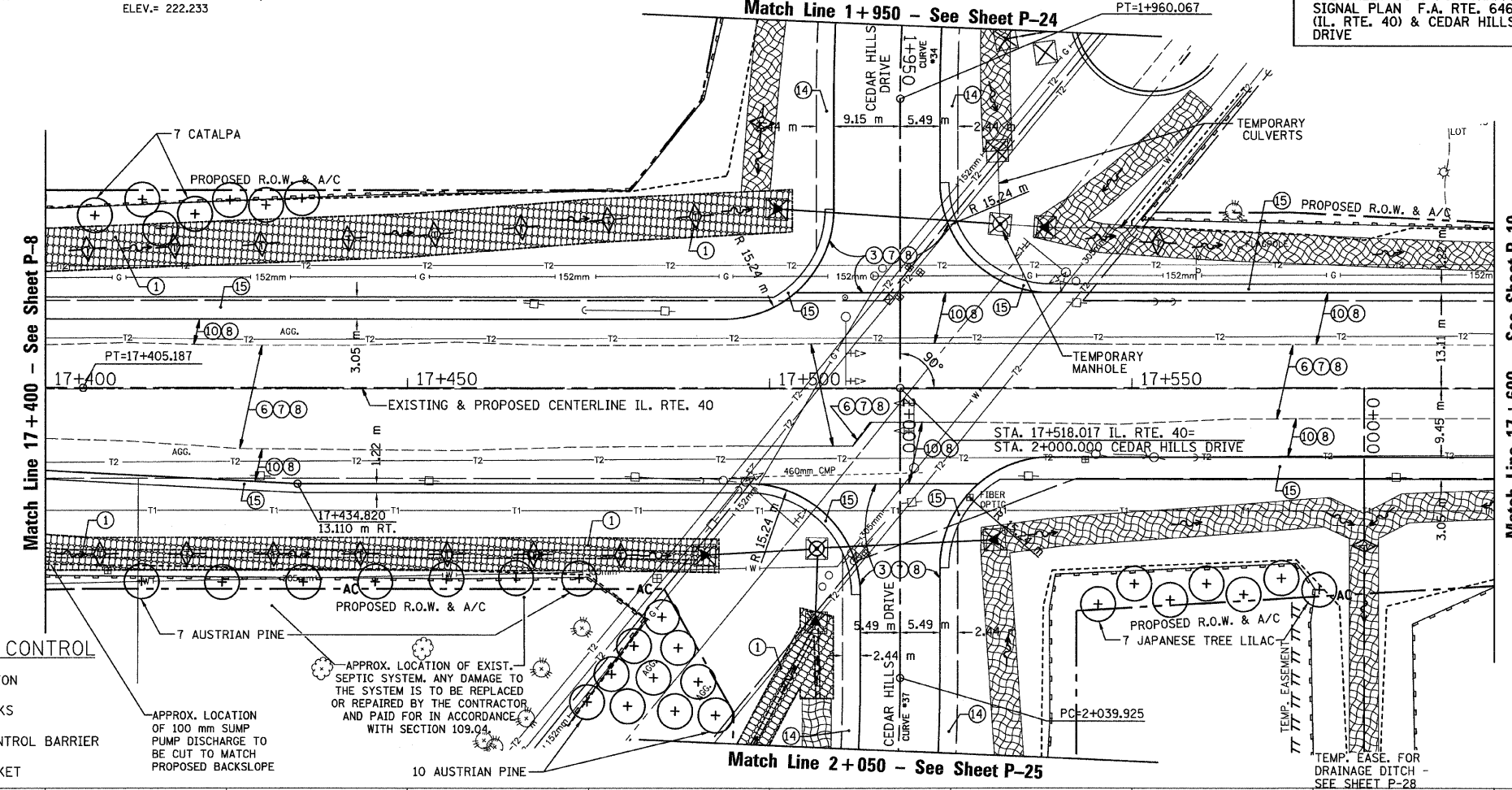
T.B.M. "13" - RR SPIKE IN POWER POLE STA. 17+318±, 6 m± LT. ELEV.= 231.514
 T.B.M. "14" - "□" CHISELED IN SE COR. CONC. HEADWALL STA. 17+682±, 10 m± RT. ELEV.= 222.233

SEC. 18 & 19 T.10N., R.8E., 4th P.M.

SEE SHEET TS-6 FOR TRAFFIC SIGNAL PLAN F.A. RTE. 646 (IL. RTE. 40) & CEDAR HILLS DRIVE

RTE NO.	SECTION	COUNTY	TOTAL	SHEET #
FA 646	125W-1, RS-2	PEORIA	256	96

STATION 17+400 TO STATION 17+600



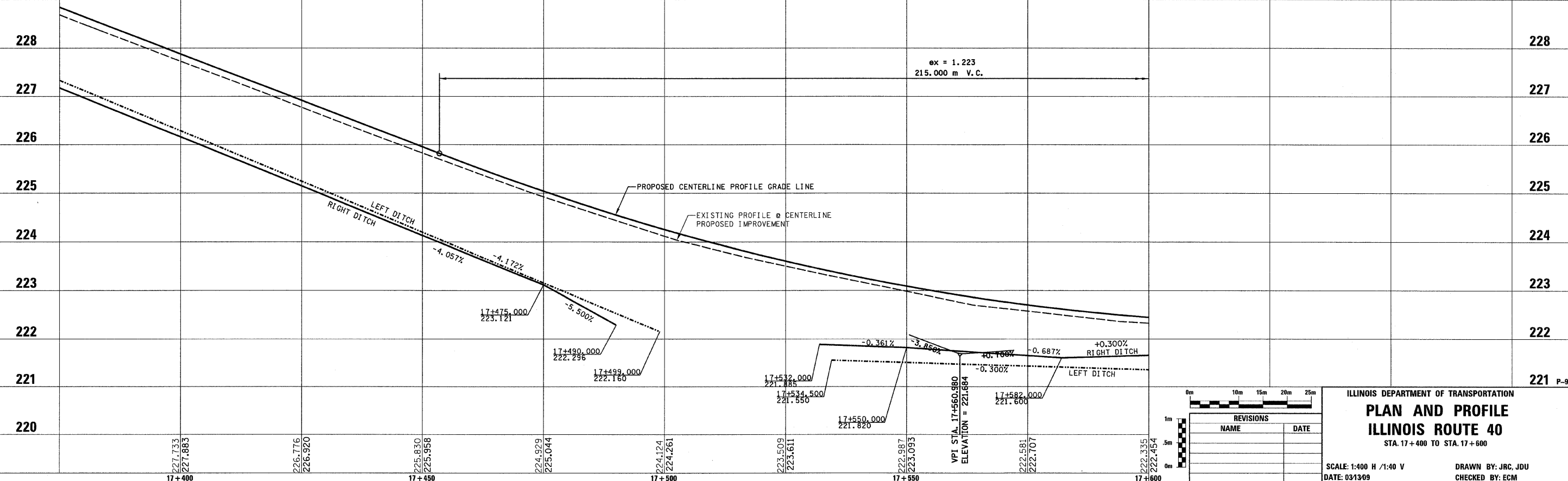
LEGEND - EROSION CONTROL

- INLET & PIPE PROTECTION
- TEMPORARY DITCH CHECKS
- PERIMETER EROSION CONTROL BARRIER
- EROSION CONTROL BLANKET

APPROX. LOCATION OF 100 mm SUMP PUMP DISCHARGE TO BE CUT TO MATCH PROPOSED BACKSLOPE

APPROX. LOCATION OF EXIST. SEPTIC SYSTEM. ANY DAMAGE TO THE SYSTEM IS TO BE REPLACED OR REPAIRED BY THE CONTRACTOR AND PAID FOR IN ACCORDANCE WITH SECTION 109.04

- LEGEND**
- 1 FABRIC FORMED CONCRETE REVETMENT MAT
 - 2 AGGREGATE BASE COURSE
 - 3 HOT-MIX ASPHALT BASE COURSE
 - 4 HOT-MIX ASPHALT BASE COURSE WIDENING
 - 5 AGGREGATE SURFACE COURSE
 - 6 LEVELING BINDER (MACHINE METHOD)
 - 7 HOT-MIX ASPHALT BINDER COURSE
 - 8 POLYMERIZED HOT-MIX ASPHALT SURFACE COURSE
 - 9 HOT-MIX ASPHALT REMOVAL-BUTT JOINT
 - 10 HOT-MIX ASPHALT PAVEMENT (FULL-DEPTH)
 - 11 PORTLAND CEMENT CONCRETE PAVEMENT
 - 12 PORTLAND CEMENT CONCRETE SIDEWALK
 - 13 HOT-MIX ASPHALT REMOVAL (VAR. DEPTH)
 - 14 AGGREGATE SHOULDERS
 - 15 HOT-MIX ASPHALT SHOULDERS
 - 16 COMBINATION CONCRETE CURB AND GUTTER
- STATION 1+976, 4° LT. FWD.
30 m P CUL CL A 1 750
W/ PRC FL-END SEC - EACH END
- STATION 1+976 - LT.
20 m - P CUL CL D 1 750 TEM
(REFER TO STAGING)
- STATION 1+977.5 - 15.0m LT.
MAN A 1.5D TIF CL
(REFER TO STAGING)
- STATION 1+975 - LT.
9.1 m - P CUL CL D 1 450 TEM
(REFER TO STAGING)
- STATION 2+021.5, 3° RT. AHD.
20.0 m - P CUL CL A 1 750
W/ PRC FL-END SEC - LT.
DSFL = 221.885
- STATION 2+022, 11.5 m RT.
MAN A 1.8D TIF CL
W/ 16.6 m - P CUL CL A 1 750
W/ PRC FL-END SEC 750 - TO THE SOUTH
USFL = 222.296
& 9.0 m - P CUL CL A 1 450
W/ PRC FL-END SEC 450 - TO THE EAST
USFL = 222.400



REVISIONS

NAME	DATE

ILLINOIS DEPARTMENT OF TRANSPORTATION
PLAN AND PROFILE
ILLINOIS ROUTE 40
 STA. 17+400 TO STA. 17+600

SCALE: 1:400 H / 1:40 V
 DATE: 03/13/09
 DRAWN BY: JRC, JDU
 CHECKED BY: ECM