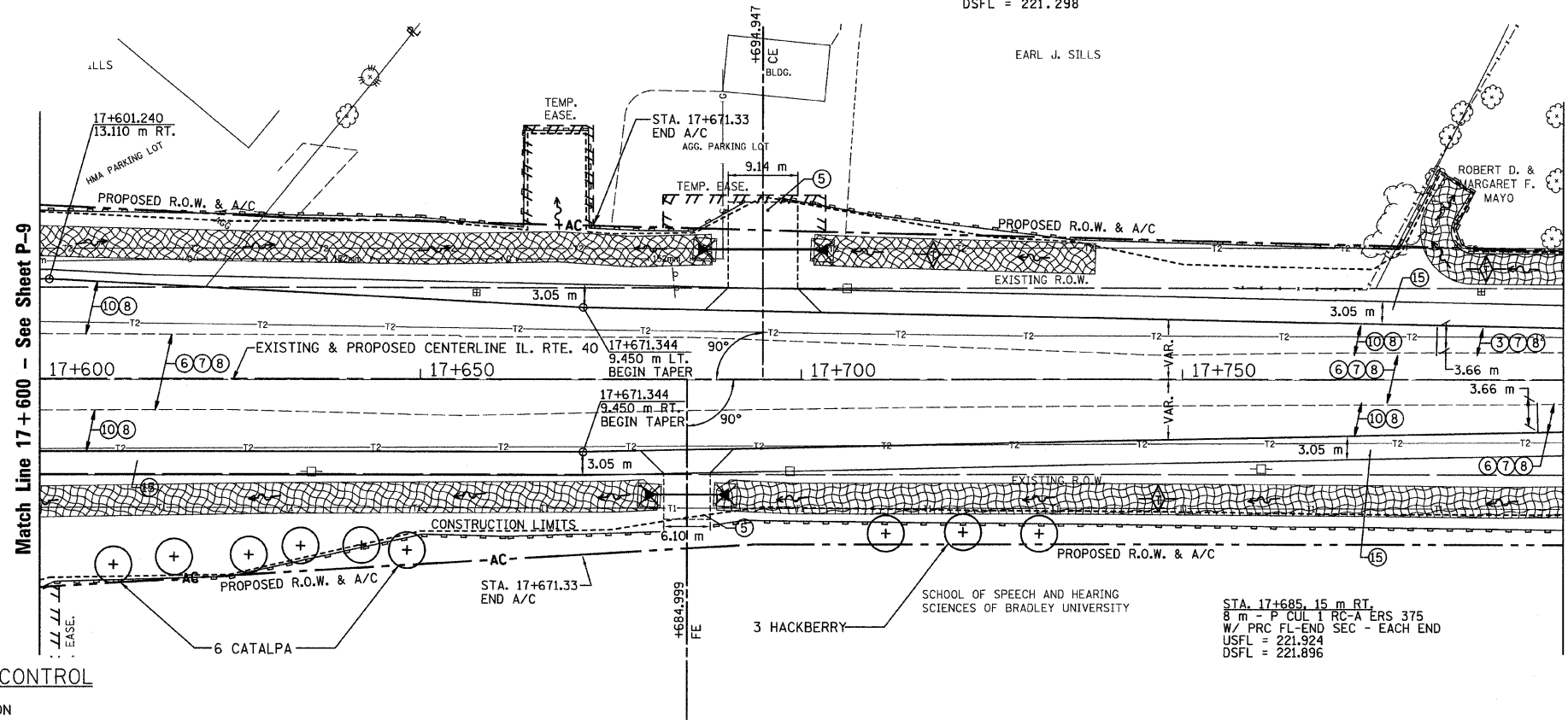


T.B.M. "14" - " " CHISELED IN SE COR. CONC.
 HEADWALL STA. 17+682±, 10 m± RT.
 ELEV. = 222.233

SEC. 18 T.10N., R.8E., 4th P.M.

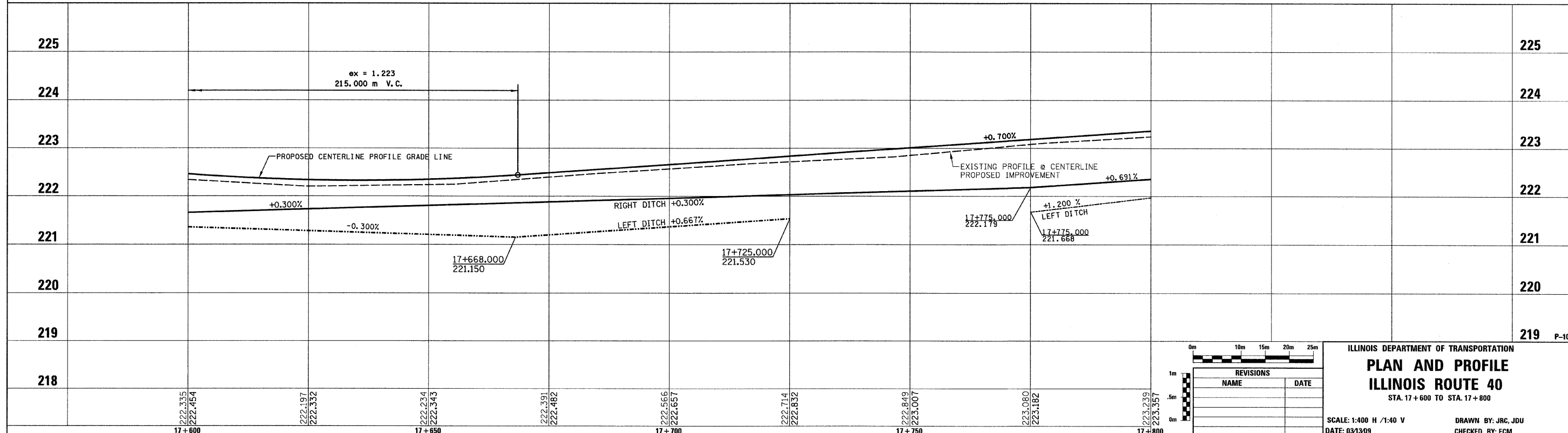
RTE NO.	SECTION	COUNTY	TOTAL	SHEET #
FA 646	125W-1, RS-2	PEORIA	256	97
STATION 17+150 TO STATION 17+400				

STA. 17+695, 17 m LT.
 14 m - P CUL CL D 1 450
 W/ END SEC 450- EACH END
 USFL = 221.362
 DSFL = 221.298



- LEGEND**
- 1 FABRIC FORMED CONCRETE REVELMENT MAT
 - 2 AGGREGATE BASE COURSE
 - 3 HOT-MIX ASPHALT BASE COURSE
 - 4 HOT-MIX ASPHALT BASE COURSE WIDENING
 - 5 AGGREGATE SURFACE COURSE
 - 6 LEVELING BINDER (MACHINE METHOD)
 - 7 HOT-MIX ASPHALT BINDER COURSE
 - 8 POLYMERIZED HOT-MIX ASPHALT SURFACE COURSE
 - 9 HOT-MIX ASPHALT REMOVAL-BUTT JOINT
 - 10 HOT-MIX ASPHALT PAVEMENT (FULL-DEPTH)
 - 11 PORTLAND CEMENT CONCRETE PAVEMENT
 - 12 PORTLAND CEMENT CONCRETE SIDEWALK
 - 13 HOT-MIX ASPHALT REMOVAL (VAR. DEPTH)
 - 14 AGGREGATE SHOULDERS
 - 15 HOT-MIX ASPHALT SHOULDERS
 - 16 COMBINATION CONCRETE CURB AND GUTTER

- LEGEND - EROSION CONTROL**
- INLET & PIPE PROTECTION
 - TEMPORARY DITCH CHECKS
 - PERIMETER EROSION CONTROL BARRIER
 - EROSION CONTROL BLANKET



REVISIONS	
NAME	DATE

ILLINOIS DEPARTMENT OF TRANSPORTATION

PLAN AND PROFILE

ILLINOIS ROUTE 40

STA. 17+600 TO STA. 17+800

SCALE: 1:400 H / 1:40 V

DATE: 03/13/09

DRAWN BY: JRC, JDU

CHECKED BY: ECM