

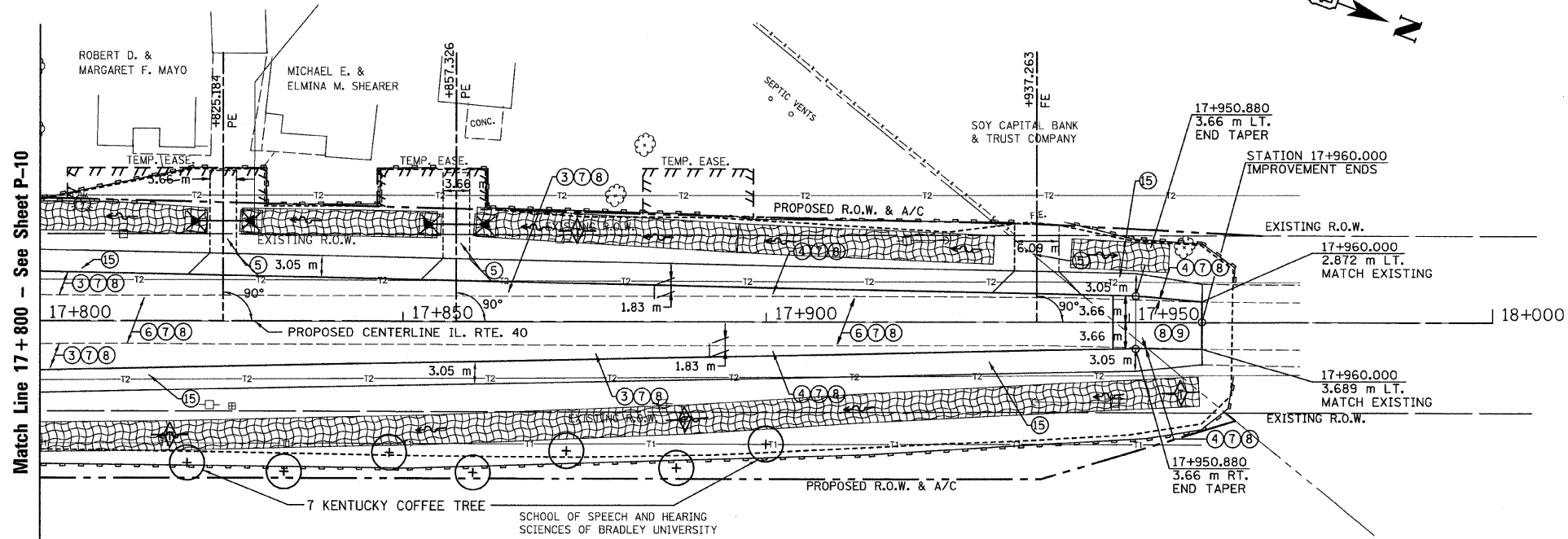
SEC. 18 T.10N., R.8E., 4th P.M.

RTE NO.	SECTION	COUNTY	TOTAL	SHEET #
FA 646	125W-1, RS-2	PEORIA	256	98
STATION 17+800 TO		STATION 18+000		

T.B.M. "14" - "□" CHISELED IN SE COR. CONC.
HEADWALL STA. 17+682±, 10 m± RT.
ELEV.= 222.233

STA. 17+821, 14 m LT,
8 m - P CUL 1 RC-A ERS 375
W/ PRCF ES EORS 375 - EACH END
USFL = 222.277
DSFL = 222.163

STA. 17+853, 13.6 m LT,
6 m - P CUL 1 RC-A ERS 375
W/ PRCF ES EORS 375 - EACH END
USFL = 222.649
DSFL = 222.559

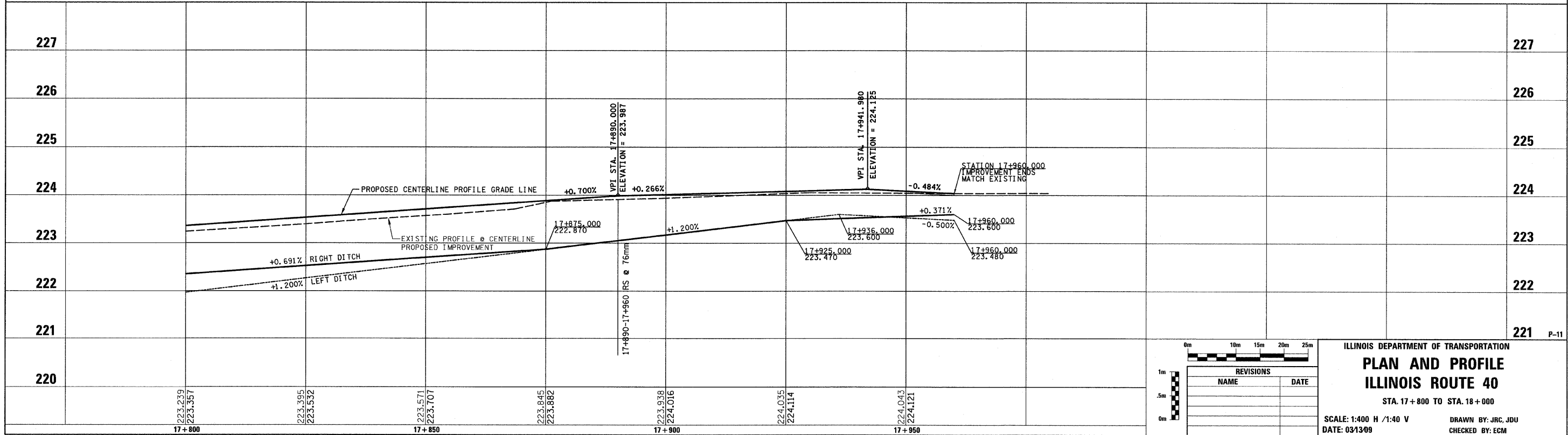


LEGEND

- ① FABRIC FORMED CONCRETE REVELMENT MAT
- ② AGGREGATE BASE COURSE
- ③ HOT-MIX ASPHALT BASE COURSE
- ④ HOT-MIX ASPHALT BASE COURSE WIDENING
- ⑤ AGGREGATE SURFACE COURSE
- ⑥ LEVELING BINDER (MACHINE METHOD)
- ⑦ HOT-MIX ASPHALT BINDER COURSE
- ⑧ POLYMERIZED HOT-MIX ASPHALT SURFACE COURSE
- ⑨ HOT-MIX ASPHALT REMOVAL-BUTT JOINT
- ⑩ HOT-MIX ASPHALT PAVEMENT (FULL-DEPTH)
- ⑪ PORTLAND CEMENT CONCRETE PAVEMENT
- ⑫ PORTLAND CEMENT CONCRETE SIDEWALK
- ⑬ HOT-MIX ASPHALT REMOVAL (VAR. DEPTH)
- ⑭ AGGREGATE SHOULDERS
- ⑮ HOT-MIX ASPHALT SHOULDERS
- ⑯ COMBINATION CONCRETE CURB AND GUTTER

LEGEND - EROSION CONTROL

- ⊗ INLET & PIPE PROTECTION
- ◇ TEMPORARY DITCH CHECKS
- PERIMETER EROSION CONTROL BARRIER
- ▨ EROSION CONTROL BLANKET



REVISIONS	
NAME	DATE

ILLINOIS DEPARTMENT OF TRANSPORTATION
PLAN AND PROFILE
ILLINOIS ROUTE 40
STA. 17+800 TO STA. 18+000

SCALE: 1:400 H / 1:40 V
DATE: 03/13/09
DRAWN BY: JRC, JDU
CHECKED BY: ECM