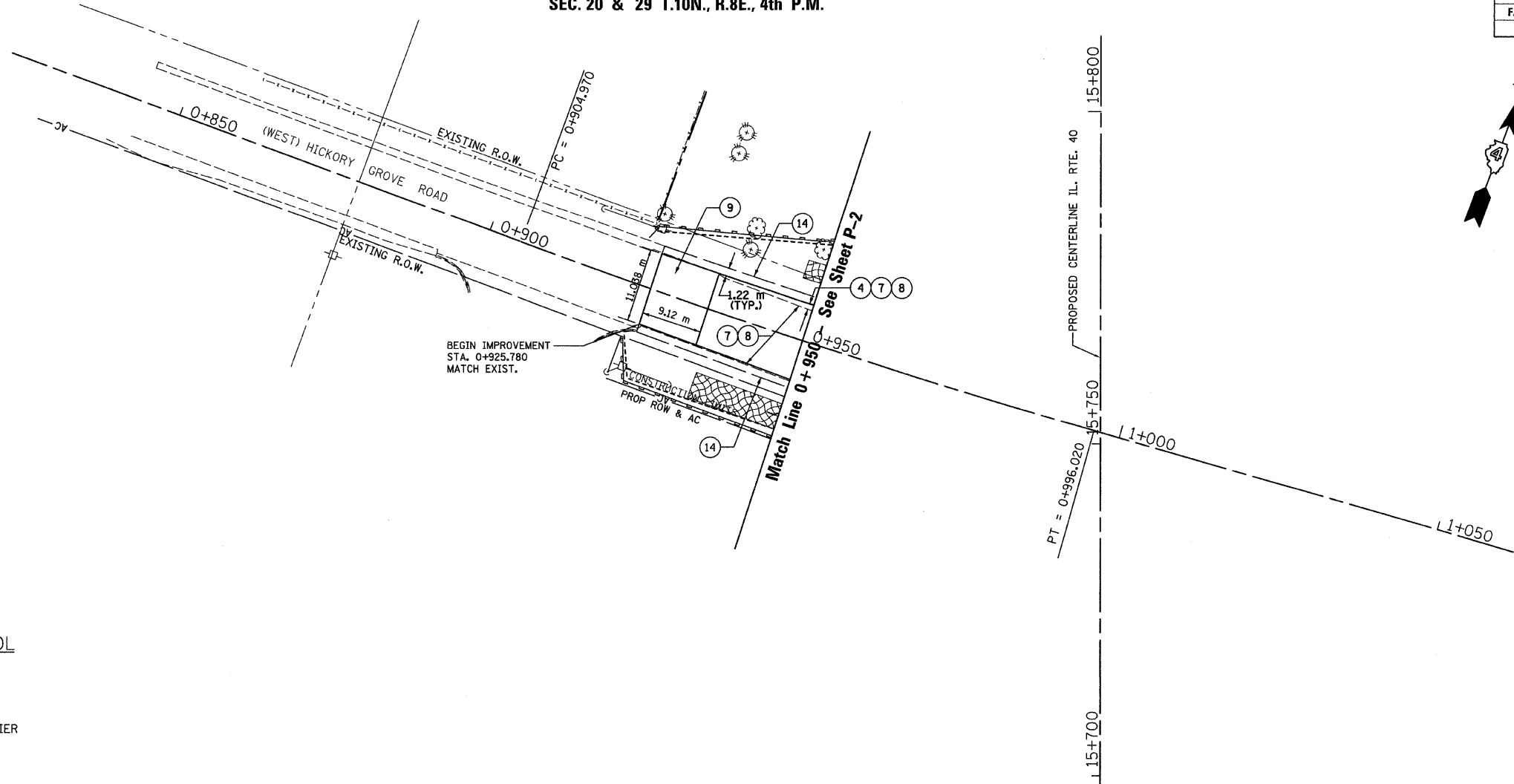


T.B.M. "20" - RR SPIKE IN POWER POLE  
 STA. 0+900±, 39 m± LT.  
 HICKORY GROVE, ELEV.= 240.290

SEC. 20 & 29 T.10N., R.8E., 4th P.M.

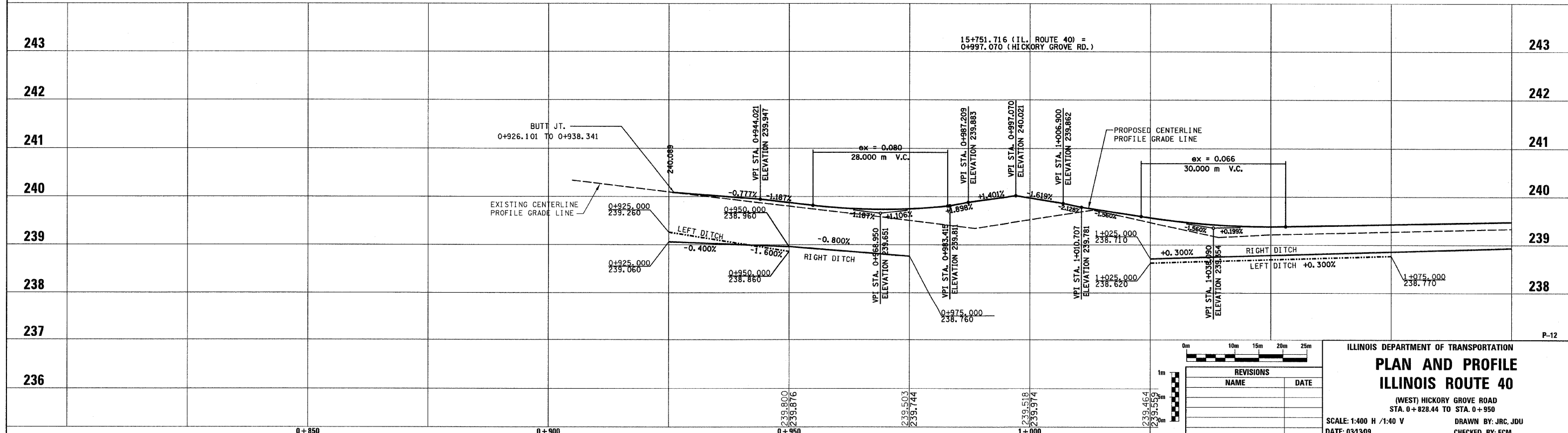
RTE NO.	SECTION	COUNTY	TOTAL	SHEET #
FA 646	125W-1, RS-2	PEORIA	256	99
STATION 0+925.781 TO		STATION 0+970.000		



- LEGEND**
- ① FABRIC FORMED CONCRETE REVETMENT MAT
  - ② AGGREGATE BASE COURSE
  - ③ HOT-MIX ASPHALT BASE COURSE
  - ④ HOT-MIX ASPHALT BASE COURSE WIDENING
  - ⑤ AGGREGATE SURFACE COURSE
  - ⑥ LEVELING BINDER (MACHINE METHOD)
  - ⑦ HOT-MIX ASPHALT BINDER COURSE
  - ⑧ POLYMERIZED HOT-MIX ASPHALT SURFACE COURSE
  - ⑨ HOT-MIX ASPHALT REMOVAL-BUTT JOINT
  - ⑩ HOT-MIX ASPHALT PAVEMENT (FULL-DEPTH)
  - ⑪ PORTLAND CEMENT CONCRETE PAVEMENT
  - ⑫ PORTLAND CEMENT CONCRETE SIDEWALK
  - ⑬ HOT-MIX ASPHALT REMOVAL (VAR. DEPTH)
  - ⑭ AGGREGATE SHOULDERS
  - ⑮ HOT-MIX ASPHALT SHOULDERS
  - ⑯ COMBINATION CONCRETE CURB AND GUTTER

**LEGEND - EROSION CONTROL**

- ☒ INLET & PIPE PROTECTION
- ◇ TEMPORARY DITCH CHECKS
- PERIMETER EROSION CONTROL BARRIER
- ▨ EROSION CONTROL BLANKET



REVISIONS	
NAME	DATE

ILLINOIS DEPARTMENT OF TRANSPORTATION  
**PLAN AND PROFILE**  
**ILLINOIS ROUTE 40**  
 (WEST) HICKORY GROVE ROAD  
 STA. 0+828.44 TO STA. 0+950  
 SCALE: 1:400 H / 1:40 V  
 DATE: 03/13/09  
 DRAWN BY: JRC, JDU  
 CHECKED BY: ECM