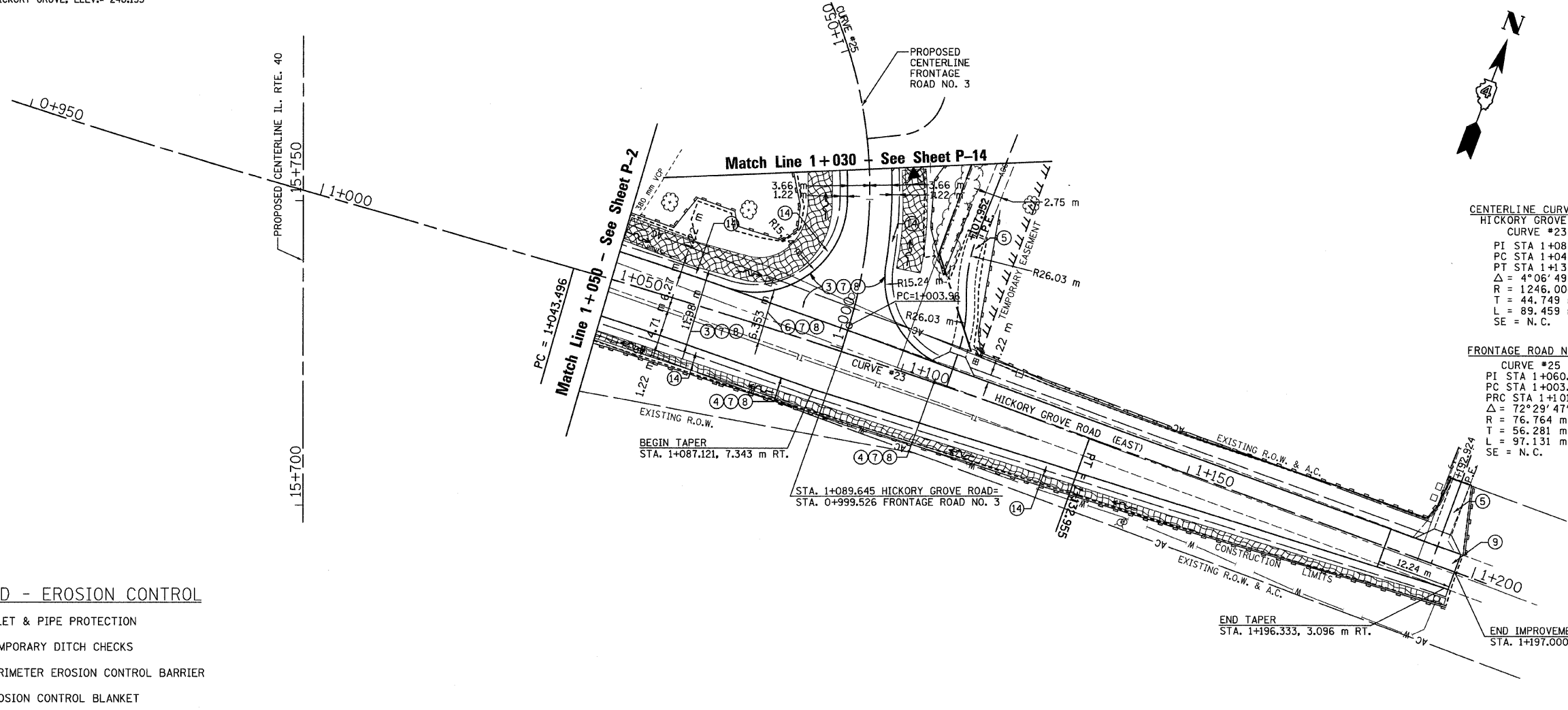


T.B.M. "19" - N. CAP BOLT FIRE HYD.
HICKORY GROVE, ELEV.= 240.155

SEC. 20 & 29 T.10N., R.8E., 4th P.M.

RTE NO.	SECTION	COUNTY	TOTAL	SHEET #
FA 646	125W-1, RS-2	PEORIA	256	100
STATION 1+050 TO STATION 1+197				



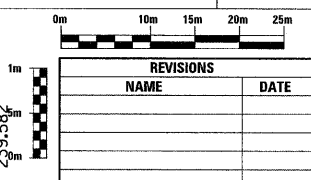
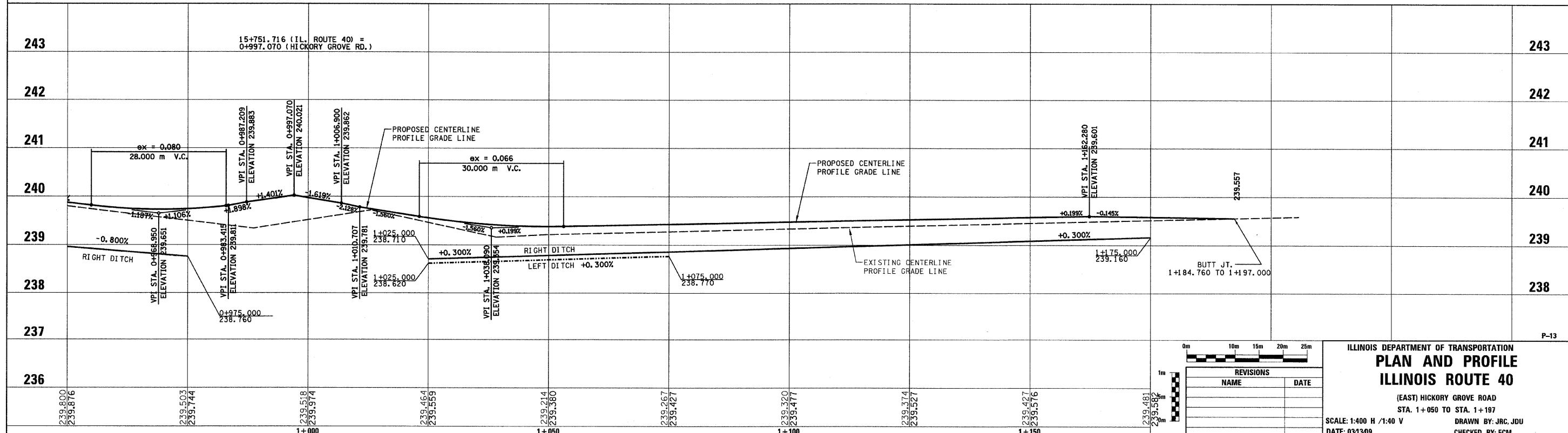
CENTERLINE CURVE DATA
HICKORY GROVE ROAD
CURVE #23

PI STA 1+088.245
PC STA 1+043.496
PT STA 1+132.955
 $\Delta = 4^{\circ}06'49''$
R = 1246.000 m
T = 44.749 m
L = 89.459 m
SE = N.C.

FRONTAGE ROAD NO. 3
CURVE #25

PI STA 1+060.27
PC STA 1+003.96
PRC STA 1+101.09
 $\Delta = 72^{\circ}29'47''$
R = 76.764 m
T = 56.281 m
L = 97.131 m
SE = N.C.

- LEGEND
- FABRIC FORMED CONCRETE REVETMENT MAT
 - AGGREGATE BASE COURSE
 - HOT-MIX ASPHALT BASE COURSE
 - HOT-MIX ASPHALT BASE COURSE WIDENING
 - AGGREGATE SURFACE COURSE
 - LEVELING BINDER (MACHINE METHOD)
 - HOT-MIX ASPHALT BINDER COURSE
 - POLYMERIZED HOT-MIX ASPHALT SURFACE COURSE
 - HOT-MIX ASPHALT REMOVAL-BUTT JOINT
 - HOT-MIX ASPHALT PAVEMENT (FULL-DEPTH)
 - PORTLAND CEMENT CONCRETE PAVEMENT
 - PORTLAND CEMENT CONCRETE SIDEWALK
 - HOT-MIX ASPHALT REMOVAL (VAR. DEPTH)
 - AGGREGATE SHOULDERS
 - HOT-MIX ASPHALT SHOULDERS
 - COMBINATION CONCRETE CURB AND GUTTER



ILLINOIS DEPARTMENT OF TRANSPORTATION
PLAN AND PROFILE
ILLINOIS ROUTE 40

(EAST) HICKORY GROVE ROAD
STA. 1+050 TO STA. 1+197

SCALE: 1:400 H / 1:40 V
DATE: 03/13/09

REVISIONS

NAME	DATE

DRAWN BY: JRC, JDU
CHECKED BY: ECM