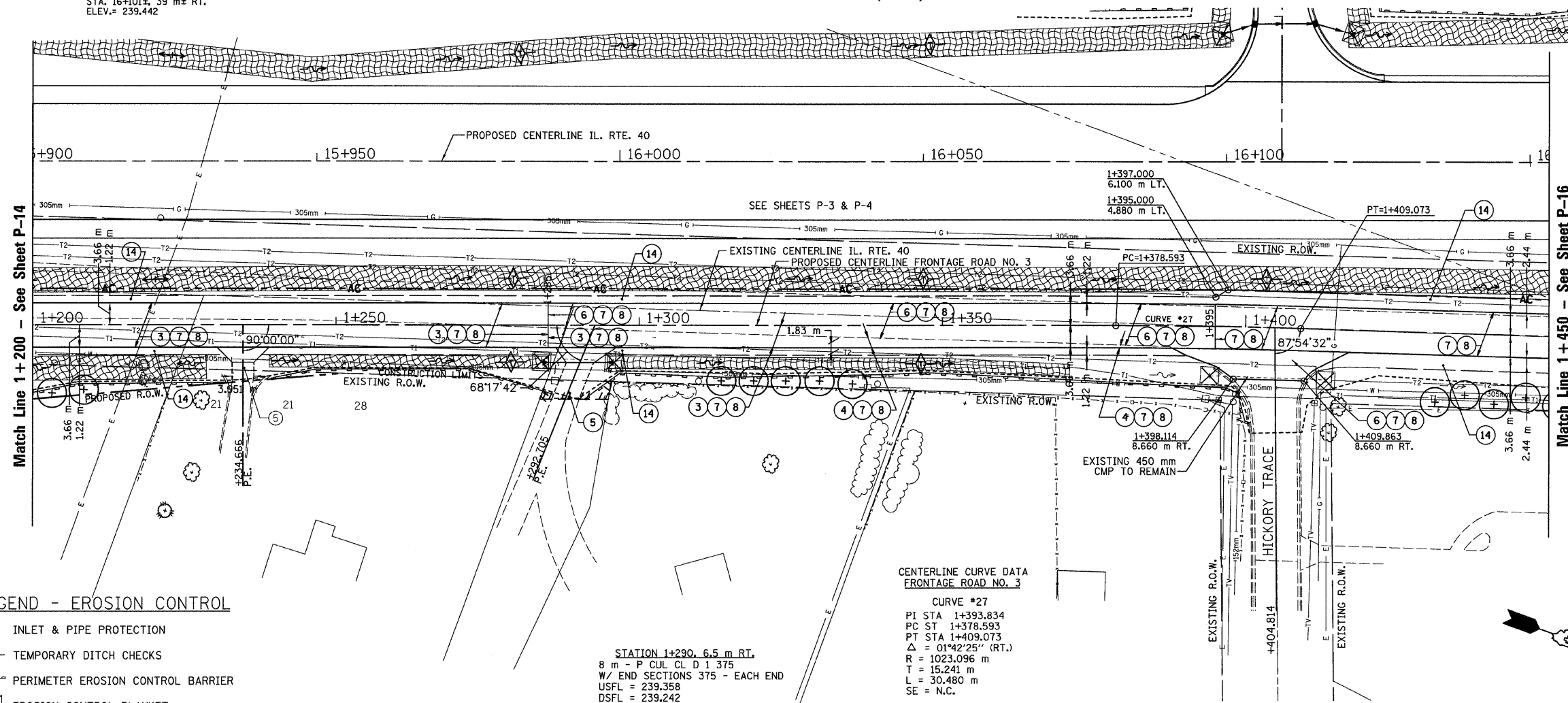


T.B.M. "9" - TOP VALVE STEM FIRE HYD.  
 STA. 16+101±, 39 m± RT.  
 ELEV.= 239.442

SEC. 20 T.10N., R.8E., 4th P.M.

RTE NO.	SECTION	COUNTY	TOTAL	SHEET #
FA 646	125W-1, RS-2	PEORIA	256	102
STATION 1+200 TO STATION 1+450				



- LEGEND**
- ① FABRIC FORMED CONCRETE REVETMENT MAT
  - ② AGGREGATE BASE COURSE
  - ③ HOT-MIX ASPHALT BASE COURSE
  - ④ HOT-MIX ASPHALT BASE COURSE WIDENING
  - ⑤ AGGREGATE SURFACE COURSE
  - ⑥ LEVELING BINDER (MACHINE METHOD)
  - ⑦ HOT-MIX ASPHALT BINDER COURSE
  - ⑧ POLYMERIZED HOT-MIX ASPHALT SURFACE COURSE
  - ⑨ HOT-MIX ASPHALT REMOVAL-BUTT JOINT
  - ⑩ HOT-MIX ASPHALT PAVEMENT (FULL-DEPTH)
  - ⑪ PORTLAND CEMENT CONCRETE PAVEMENT
  - ⑫ PORTLAND CEMENT CONCRETE SIDEWALK
  - ⑬ HOT-MIX ASPHALT REMOVAL (VAR. DEPTH)
  - ⑭ AGGREGATE SHOULDERS
  - ⑮ HOT-MIX ASPHALT SHOULDERS
  - ⑯ COMBINATION CONCRETE CURB AND GUTTER

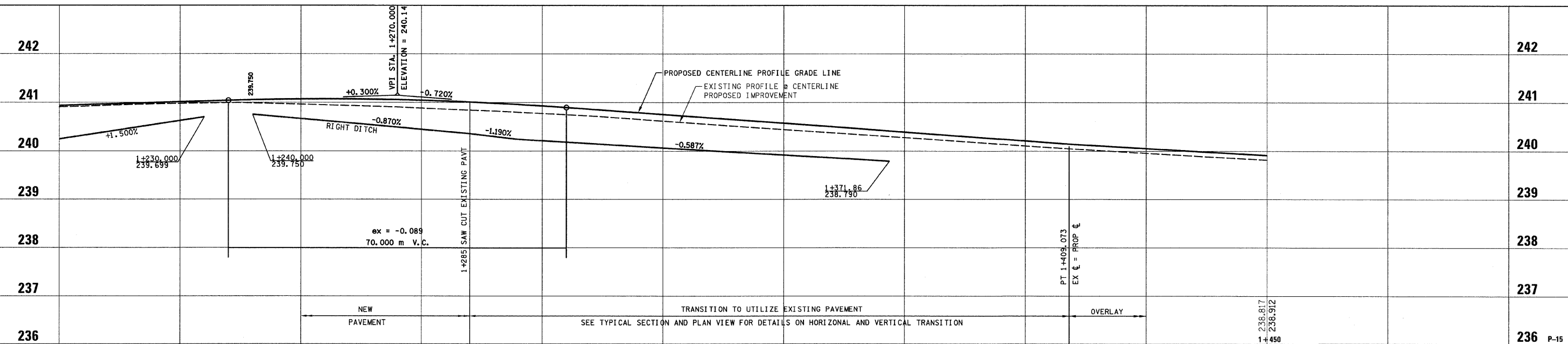
**LEGEND - EROSION CONTROL**

- ⊠ INLET & PIPE PROTECTION
- ◇ TEMPORARY DITCH CHECKS
- PERIMETER EROSION CONTROL BARRIER
- ▨ EROSION CONTROL BLANKET

**CENTERLINE CURVE DATA  
 FRONTAGE ROAD NO. 3**

CURVE #27  
 PI STA 1+393.834  
 PC ST 1+378.593  
 PT STA 1+409.073  
 $\Delta = 01^{\circ}42'25''$  (RT.)  
 R = 1023.096 m  
 T = 15.241 m  
 L = 30.480 m  
 SE = N.C.

STATION 1+290, 6.5 m RT.  
 8 m - P CUL CL D 1 375  
 W/ END SECTIONS 375 - EACH END  
 USFL = 239.358  
 DSFL = 239.242



REVISIONS	
NAME	DATE

ILLINOIS DEPARTMENT OF TRANSPORTATION  
**PLAN AND PROFILE  
 ILLINOIS ROUTE 40**  
 FRONTAGE ROAD NO. 3  
 STA. 1+200 TO STA. 1+450  
 SCALE: 1:400 H / 1:40 V  
 DATE: 03/13/09  
 DRAWN BY: JRC, JDU  
 CHECKED BY: ECM