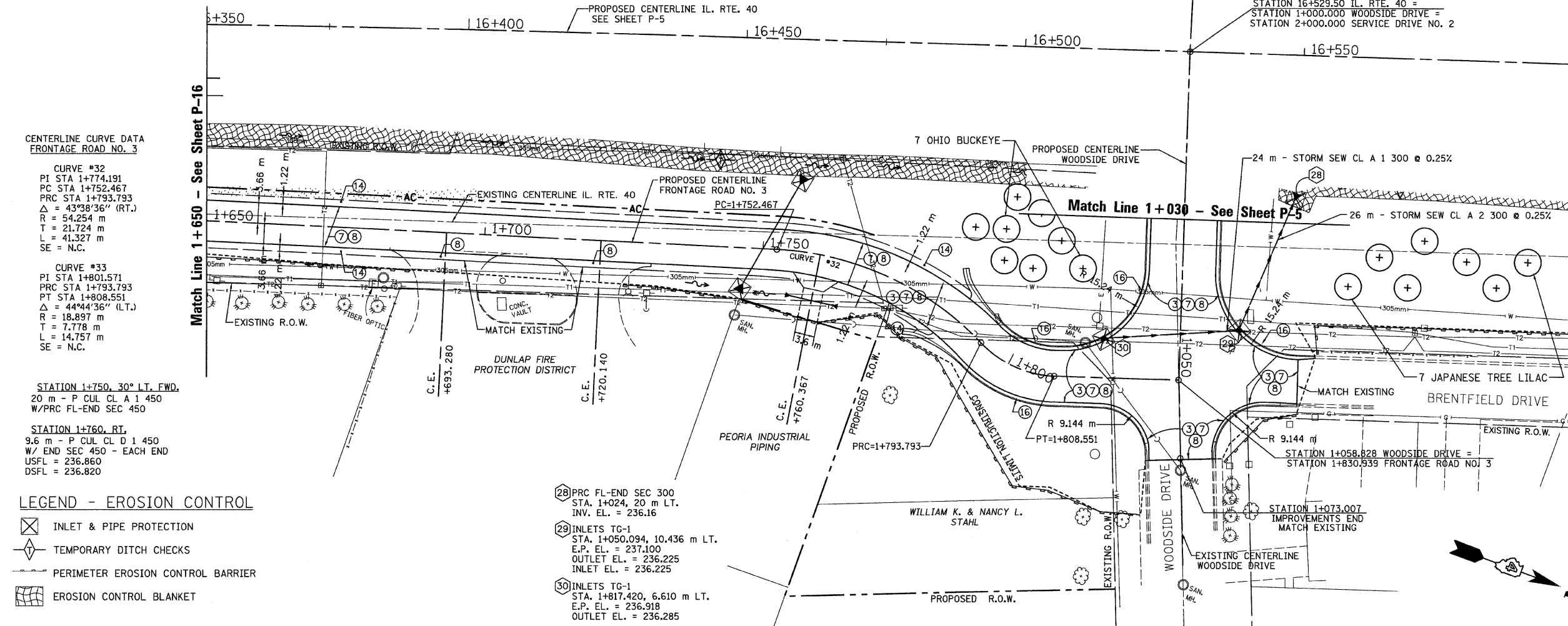


T.B.M. "9" - TOP VALVE STEM FIRE HYD.
STA. 16+101±, 39 m± RT.
ELEV.= 239.442

SEC. 20 T.10N., R.8E., 4th P.M.

RTE NO.	SECTION	COUNTY	TOTAL	SHEET #
FA 646	125W-1, RS-2	PEORIA	256	104
STATION 1+650 TO STATION 1+830.94				

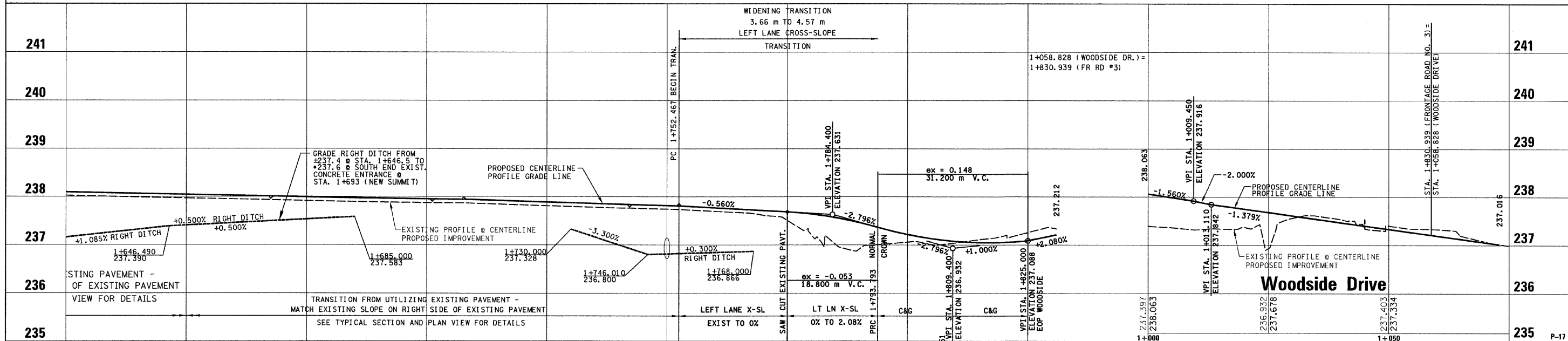


- LEGEND**
- 1 FABRIC FORMED CONCRETE REVEMENT MAT
 - 2 AGGREGATE BASE COURSE
 - 3 HOT-MIX ASPHALT BASE COURSE
 - 4 HOT-MIX ASPHALT BASE COURSE WIDENING
 - 5 AGGREGATE SURFACE COURSE
 - 6 LEVELING BINDER (MACHINE METHOD)
 - 7 HOT-MIX ASPHALT BINDER COURSE
 - 8 POLYMERIZED HOT-MIX ASPHALT SURFACE COURSE
 - 9 HOT-MIX ASPHALT REMOVAL-BUTT JOINT
 - 10 HOT-MIX ASPHALT PAVEMENT (FULL-DEPTH)
 - 11 PORTLAND CEMENT CONCRETE PAVEMENT
 - 12 PORTLAND CEMENT CONCRETE SIDEWALK
 - 13 HOT-MIX ASPHALT REMOVAL (VAR. DEPTH)
 - 14 AGGREGATE SHOULDERS
 - 15 HOT-MIX ASPHALT SHOULDERS
 - 16 COMBINATION CONCRETE CURB AND GUTTER

LEGEND - EROSION CONTROL

- INLET & PIPE PROTECTION
- TEMPORARY DITCH CHECKS
- PERIMETER EROSION CONTROL BARRIER
- EROSION CONTROL BLANKET

- 28 PRC FL-END SEC 300
STA. 1+024, 20 m LT.
INV. EL. = 236.16
- 29 INLETS TG-1
STA. 1+050.094, 10.436 m LT.
E.P. EL. = 237.100
OUTLET EL. = 236.225
INLET EL. = 236.225
- 30 INLETS TG-1
STA. 1+817.420, 6.610 m LT.
E.P. EL. = 236.918
OUTLET EL. = 236.285



Scale: 0m 10m 15m 20m 25m

REVISIONS	
NAME	DATE

SCALE: 1:400 H / 1:40 V
DATE: 03/13/09

ILLINOIS DEPARTMENT OF TRANSPORTATION

PLAN AND PROFILE

ILLINOIS ROUTE 40

FRONTAGE ROAD NO. 3
STA. 1+650 TO STA. 1+830.94

SCALE: 1:400 H / 1:40 V
DATE: 03/13/09

DRAWN BY: JRC, JDU
CHECKED BY: ECM