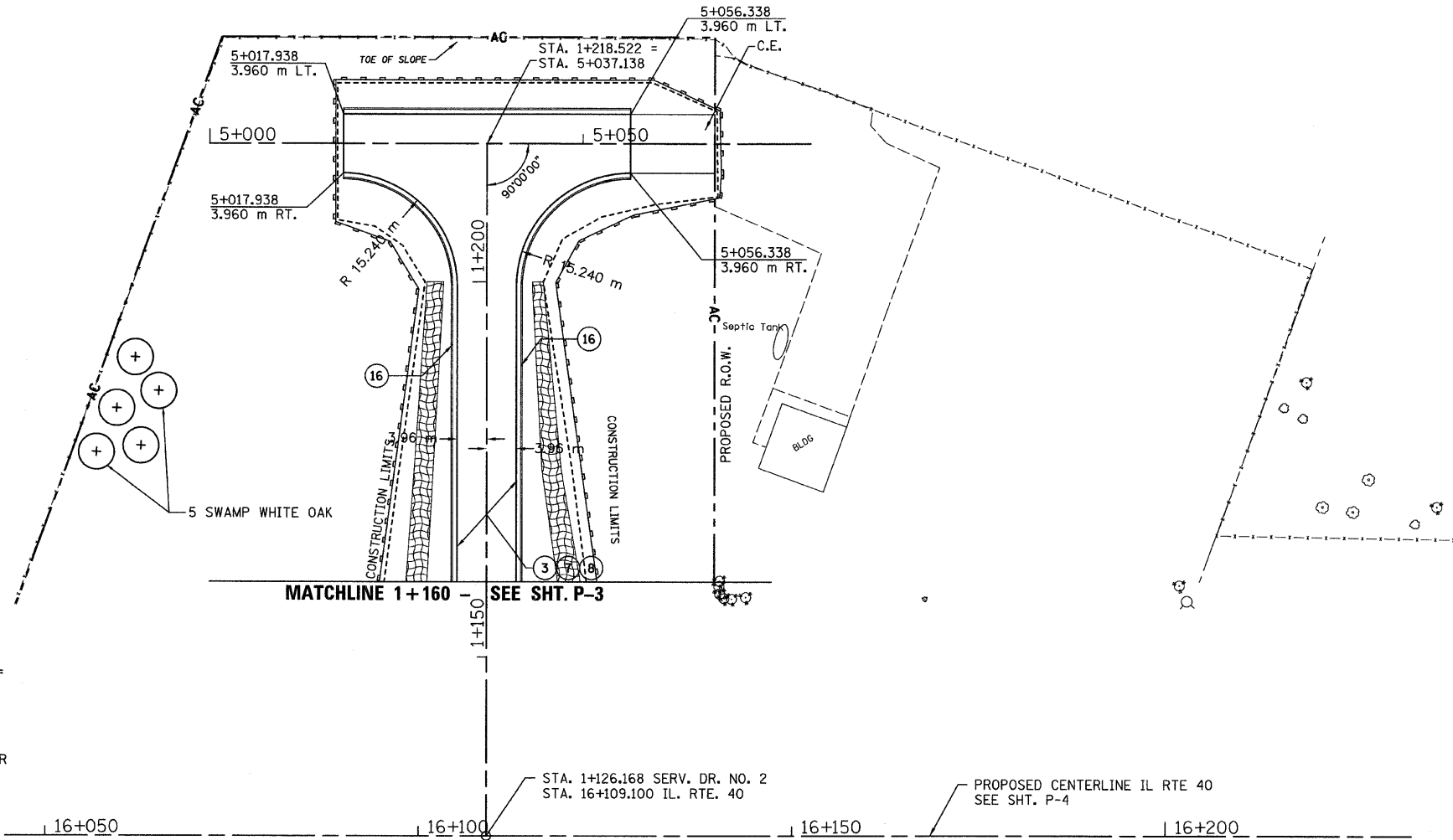


T.B.M. "10" - TOP VALVE STEM FIRE HYD.
 STA. 16+429±, 46± m RT.
 ELEV.= 238.391

SEC. 20 T.10N., R.8E., 4th P.M.

RTE NO.	SECTION	COUNTY	TOTAL	SHEET #
FA 646	125W-1, RS-2	PEORIA	256	105
STATION 1+126.168 TO STATION 1+218.522				

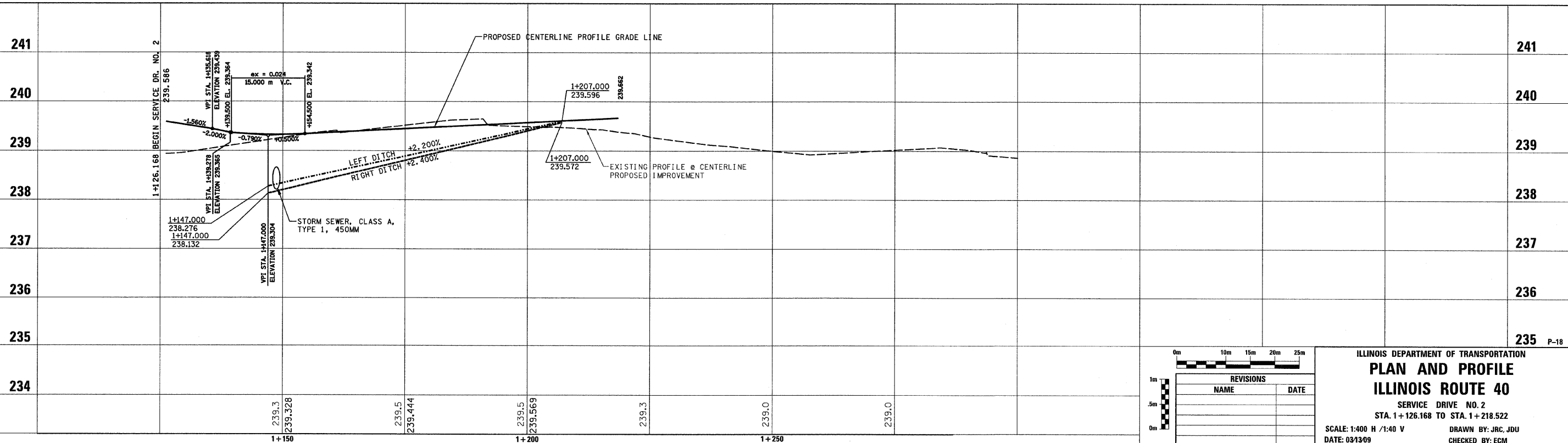


LEGEND - EROSION CONTROL

- INLET & PIPE PROTECTION
- TEMPORARY DITCH CHECKS
- PERIMETER EROSION CONTROL BARRIER
- EROSION CONTROL BLANKET

LEGEND

- ① FABRIC FORMED CONCRETE REVETMENT MAT
- ② AGGREGATE BASE COURSE
- ③ HOT-MIX ASPHALT BASE COURSE
- ④ HOT-MIX ASPHALT BASE COURSE WIDENING
- ⑤ AGGREGATE SURFACE COURSE
- ⑥ LEVELING BINDER (MACHINE METHOD)
- ⑦ HOT-MIX ASPHALT BINDER COURSE
- ⑧ POLYMERIZED HOT-MIX ASPHALT SURFACE COURSE
- ⑨ HOT-MIX ASPHALT REMOVAL-BUTT JOINT
- ⑩ HOT-MIX ASPHALT PAVEMENT (FULL-DEPTH)
- ⑪ PORTLAND CEMENT CONCRETE PAVEMENT
- ⑫ PORTLAND CEMENT CONCRETE SIDEWALK
- ⑬ HOT-MIX ASPHALT REMOVAL (VAR. DEPTH)
- ⑭ AGGREGATE SHOULDERS
- ⑮ HOT-MIX ASPHALT SHOULDERS
- ⑯ COMBINATION CONCRETE CURB AND GUTTER



REVISIONS	
NAME	DATE

ILLINOIS DEPARTMENT OF TRANSPORTATION
PLAN AND PROFILE
ILLINOIS ROUTE 40
 SERVICE DRIVE NO. 2
 STA. 1+126.168 TO STA. 1+218.522
 SCALE: 1:400 H / 1:40 V
 DATE: 03/13/09
 DRAWN BY: JRC, JDU
 CHECKED BY: ECM