

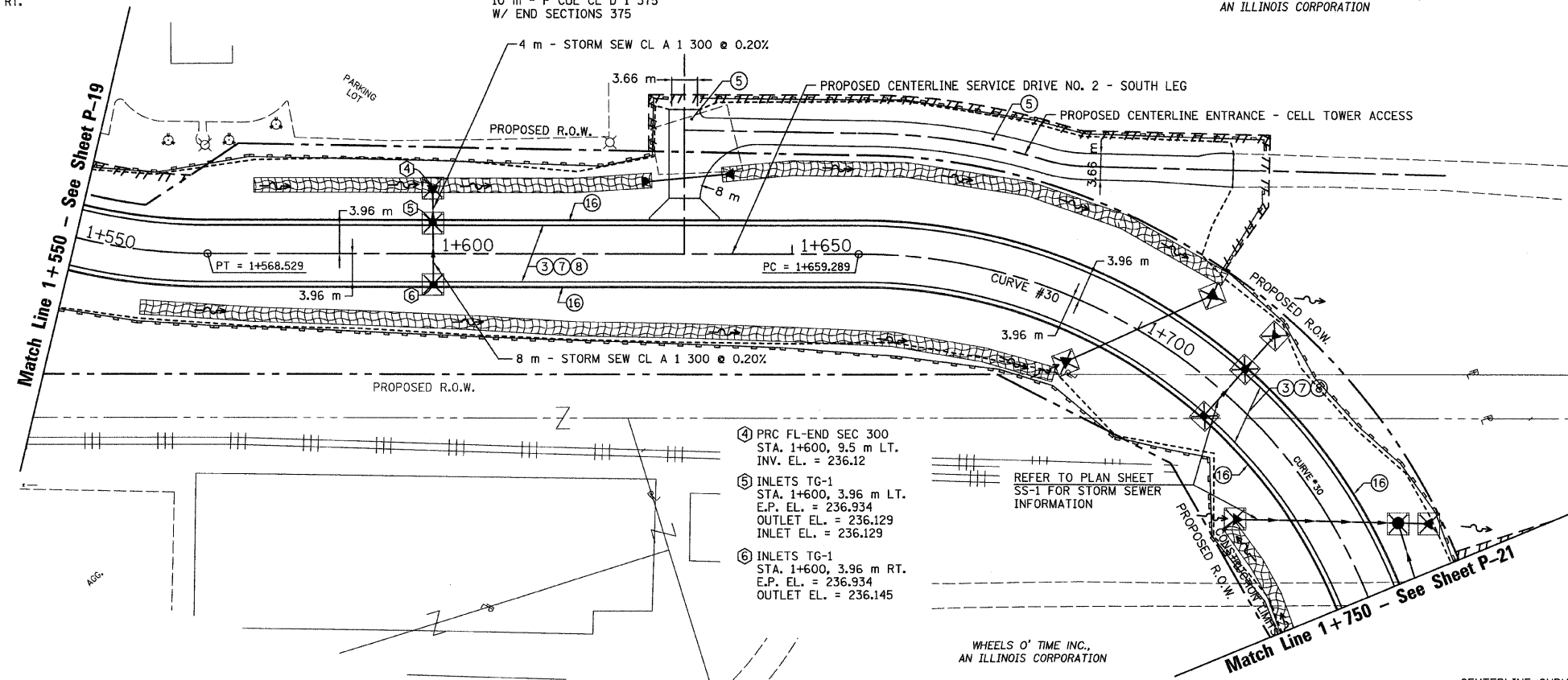
T.B.M. "10" - TOP VALVE STEM FIRE HYD.
 STA. 16+429±, 46 m± RT.
 ELEV. = 238.391

STA. 1+635
 10 m - P CUL CL D 1 375
 W/ END SECTIONS 375

SEC. 20 T.10N., R.8E., 4th P.M.

MAPLE SHADE DEVELOPMENT GROUP, INC.
 AN ILLINOIS CORPORATION

| RTE NO. | SECTION | COUNTY | TOTAL | SHEET # |
|--------------------------------|--------------|--------|-------|---------|
| FA 646 | 125W-1, RS-2 | PEORIA | 256 | 107 |
| STATION 1+550 TO STATION 1+750 | | | | |



- ④ PRC FL-END SEC 300
 STA. 1+600, 9.5 m LT.
 INV. EL. = 236.12
- ⑤ INLETS TG-1
 STA. 1+600, 3.96 m LT.
 E.P. EL. = 236.934
 OUTLET EL. = 236.129
 INLET EL. = 236.129
- ⑥ INLETS TG-1
 STA. 1+600, 3.96 m RT.
 E.P. EL. = 236.934
 OUTLET EL. = 236.145

REFER TO PLAN SHEET
 SS-1 FOR STORM SEWER
 INFORMATION

CENTERLINE CURVE DATA
 SERVICE DRIVE NO. 2

CURVE #30
 PI STA 1+715.694
 PC STA 1+659.289
 PT STA 1+756.579
 $\Delta = 72^{\circ}36'57''$ (RT.)
 R = 76.764 m
 T = 56.405 m
 L = 97.289 m
 SE = N.C.

LEGEND - EROSION CONTROL

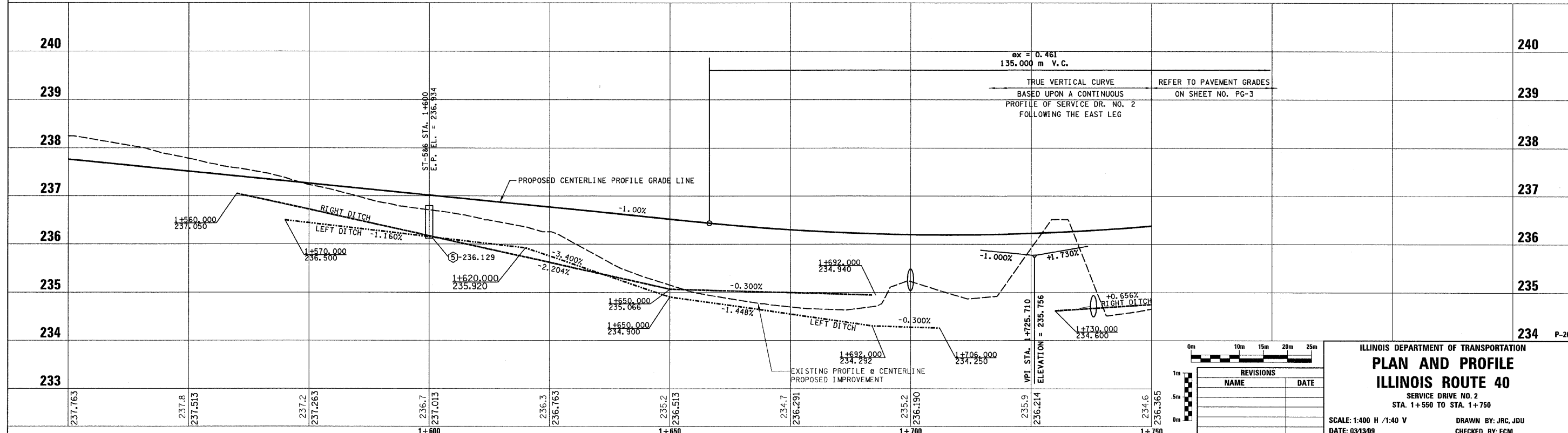
- ⊗ INLET & PIPE PROTECTION
- ◇ TEMPORARY DITCH CHECKS
- PERIMETER EROSION CONTROL BARRIER
- ▨ EROSION CONTROL BLANKET

LEGEND - PESA IMPACT

- ▨ MAX. EXCAVATION DEPTH < 0.6 M
- ▨ MAX. EXCAVATION DEPTH < 0.9 M
- ▨ MAX EXCAVATION DEPTH < 1.2 M
- ▨ MAX. EXCAVATION DEPTH < 1.8 M
- ▨ NO EXCAVATION - ENTIRE SITE

LEGEND

- ① FABRIC FORMED CONCRETE REVETMENT MAT
- ② AGGREGATE BASE COURSE
- ③ HOT-MIX ASPHALT BASE COURSE
- ④ HOT-MIX ASPHALT BASE COURSE WIDENING
- ⑤ AGGREGATE SURFACE COURSE
- ⑥ LEVELING BINDER (MACHINE METHOD)
- ⑦ HOT-MIX ASPHALT BINDER COURSE
- ⑧ POLYMERIZED HOT-MIX ASPHALT SURFACE COURSE
- ⑨ HOT-MIX ASPHALT REMOVAL-BUTT JOINT
- ⑩ HOT-MIX ASPHALT PAVEMENT (FULL-DEPTH)
- ⑪ PORTLAND CEMENT CONCRETE PAVEMENT
- ⑫ PORTLAND CEMENT CONCRETE SIDEWALK
- ⑬ HOT-MIX ASPHALT REMOVAL (VAR. DEPTH)
- ⑭ AGGREGATE SHOULDERS
- ⑮ HOT-MIX ASPHALT SHOULDERS
- ⑯ COMBINATION CONCRETE CURB AND GUTTER



| REVISIONS | |
|-----------|------|
| NAME | DATE |
| | |
| | |
| | |

ILLINOIS DEPARTMENT OF TRANSPORTATION

PLAN AND PROFILE

ILLINOIS ROUTE 40

SERVICE DRIVE NO. 2
 STA. 1+550 TO STA. 1+750

SCALE: 1:400 H / 1:40 V
 DATE: 03/30/09

DRAWN BY: JRC, JDU
 CHECKED BY: ECM