

T.B.M. "10" - TOP VALVE STEM FIRE HYD.
 STA. 16+429±, 46 m± RT.
 ELEV.= 238.391

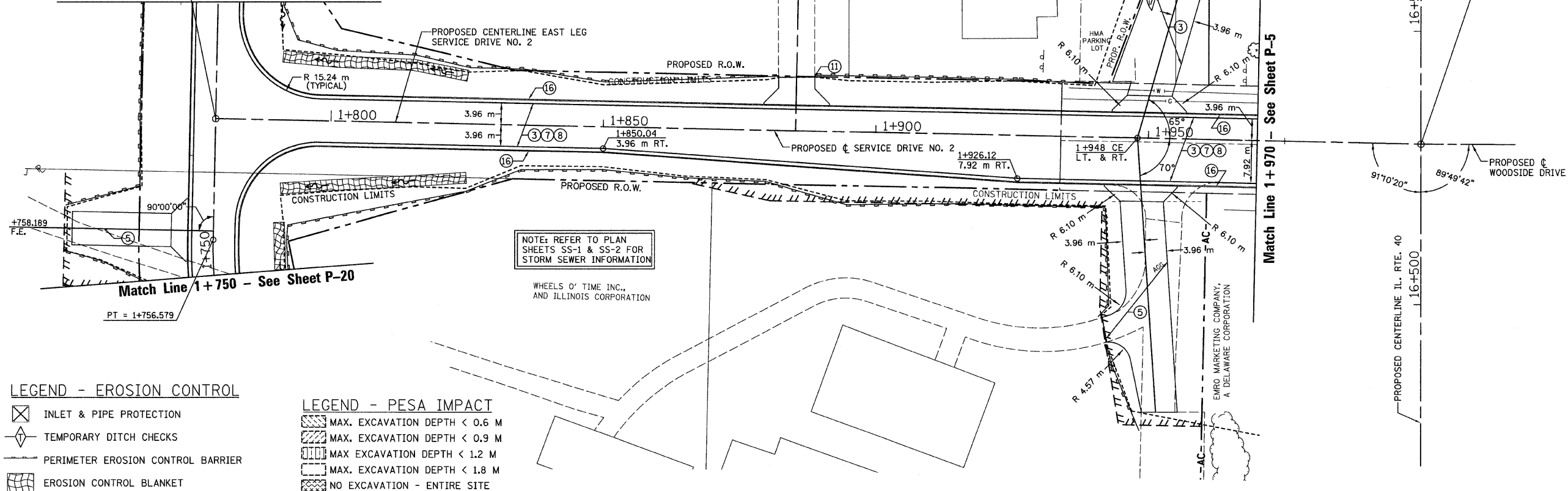
SEC. 20 T.10N., R.8E., 4th P.M.

RTE NO.	SECTION	COUNTY	TOTAL	SHEET #
FA 646	125W-1, RS-2	PEORIA	256	108
STATION 1+750 TO STATION 1+970				

STATION 16+529.489 ILL. RTE. 40 =
 STATION 1+000.000 WOODSIDE DRIVE =
 STATION 2+000.000 SERVICE DRIVE NO. 2

STA. 1+778.842 - ALL 3
 LEGS SERVICE DRIVE NO. 2 -
 STATIONS INCREASE TO NORTH
 AND EAST

Match Line 1+800 - See Sheet P-22



NOTE: REFER TO PLAN SHEETS SS-1 & SS-2 FOR STORM SEWER INFORMATION

WHEELS OF TIME INC., AND ILLINOIS CORPORATION

LEGEND - EROSION CONTROL

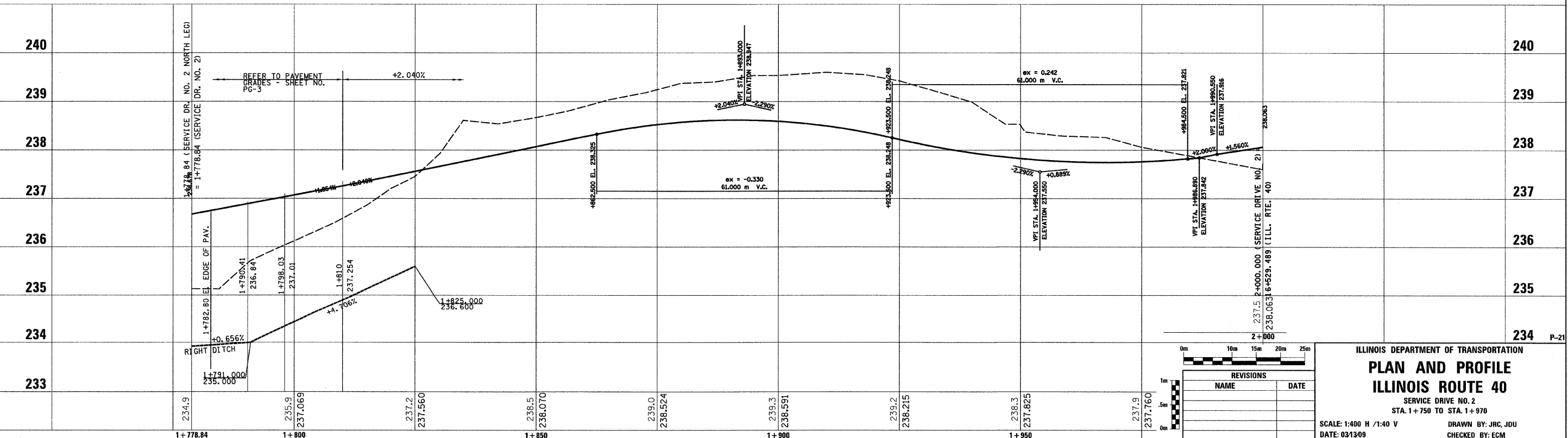
- INLET & PIPE PROTECTION
- TEMPORARY DITCH CHECKS
- PERIMETER EROSION CONTROL BARRIER
- EROSION CONTROL BLANKET

LEGEND - PESA IMPACT

- MAX. EXCAVATION DEPTH < 0.6 M
- MAX. EXCAVATION DEPTH < 0.9 M
- MAX. EXCAVATION DEPTH < 1.2 M
- MAX. EXCAVATION DEPTH < 1.8 M
- NO EXCAVATION - ENTIRE SITE

LEGEND

- FABRIC FORMED CONCRETE REVETMENT MAT
- AGGREGATE BASE COURSE
- HOT-MIX ASPHALT BASE COURSE
- HOT-MIX ASPHALT BASE COURSE WIDENING
- AGGREGATE SURFACE COURSE
- LEVELING BINDER (MACHINE METHOD)
- HOT-MIX ASPHALT BINDER COURSE
- POLYMERIZED HOT-MIX ASPHALT SURFACE COURSE
- HOT-MIX ASPHALT REMOVAL-BUTT JOINT
- HOT-MIX ASPHALT PAVEMENT (FULL-DEPTH)
- PORTLAND CEMENT CONCRETE PAVEMENT
- PORTLAND CEMENT CONCRETE SIDEWALK
- HOT-MIX ASPHALT REMOVAL (VAR. DEPTH)
- AGGREGATE SHOULDERS
- HOT-MIX ASPHALT SHOULDERS
- COMBINATION CONCRETE CURB AND GUTTER



REVISIONS	
NAME	DATE

ILLINOIS DEPARTMENT OF TRANSPORTATION
PLAN AND PROFILE
ILLINOIS ROUTE 40
 SERVICE DRIVE NO. 2
 STA. 1+750 TO STA. 1+970
 SCALE: 1:400 H / 1:40 V
 DATE: 03/13/09
 DRAWN BY: JRC, JDU
 CHECKED BY: ECM