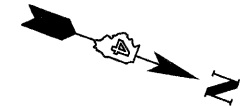
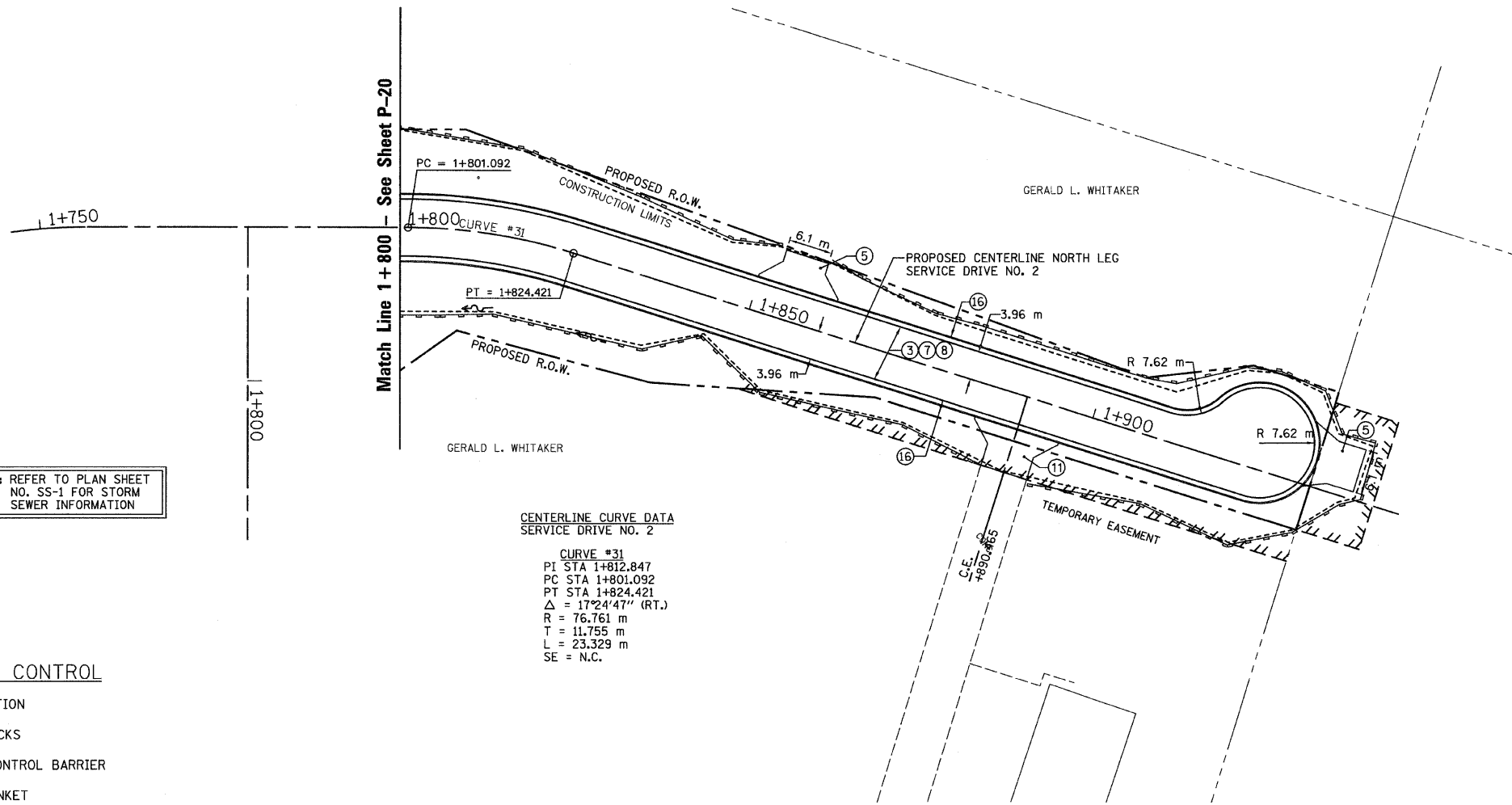


SEC. 20 T.10N., R.8E., 4th P.M.

RTE NO.	SECTION	COUNTY	TOTAL	SHEET #
FA 646	125W-1, RS-2	PEORIA	256	109
STATION 1+825 TO STATION 1+925				

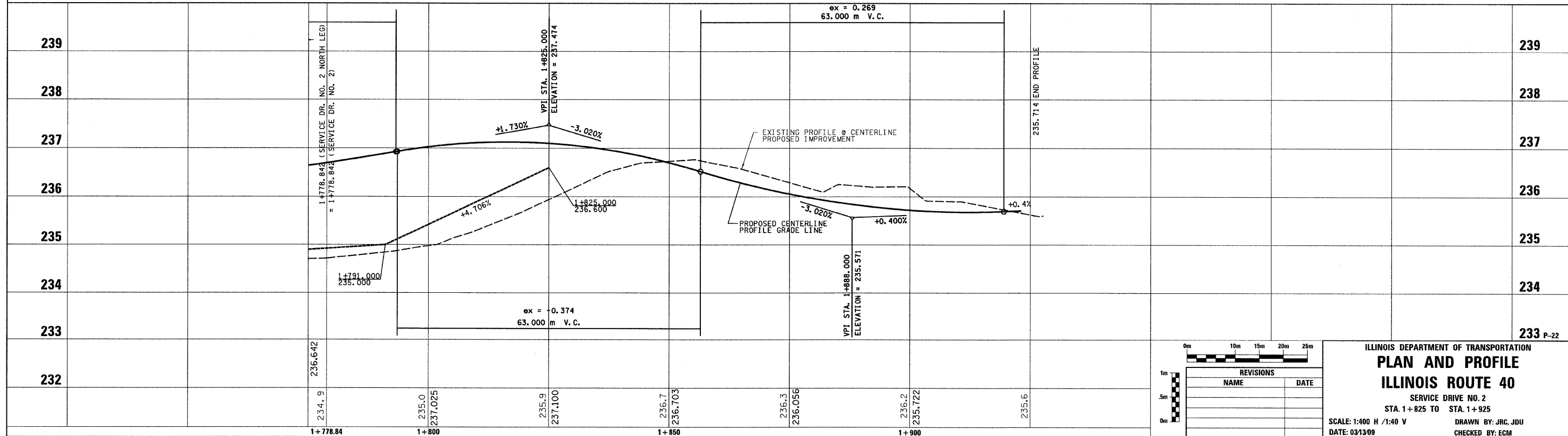


LEGEND

- ① FABRIC FORMED CONCRETE REVETMENT MAT
- ② AGGREGATE BASE COURSE
- ③ HOT-MIX ASPHALT BASE COURSE
- ④ HOT-MIX ASPHALT BASE COURSE WIDENING
- ⑤ AGGREGATE SURFACE COURSE
- ⑥ LEVELING BINDER (MACHINE METHOD)
- ⑦ HOT-MIX ASPHALT BINDER COURSE
- ⑧ POLYMERIZED HOT-MIX ASPHALT SURFACE COURSE
- ⑨ HOT-MIX ASPHALT REMOVAL-BUTT JOINT
- ⑩ HOT-MIX ASPHALT PAVEMENT (FULL-DEPTH)
- ⑪ PORTLAND CEMENT CONCRETE PAVEMENT
- ⑫ PORTLAND CEMENT CONCRETE SIDEWALK
- ⑬ HOT-MIX ASPHALT REMOVAL (VAR. DEPTH)
- ⑭ AGGREGATE SHOULDERS
- ⑮ HOT-MIX ASPHALT SHOULDERS
- ⑯ COMBINATION CONCRETE CURB AND GUTTER

LEGEND - EROSION CONTROL

- ☒ INLET & PIPE PROTECTION
- ◇ TEMPORARY DITCH CHECKS
- PERIMETER EROSION CONTROL BARRIER
- ▨ EROSION CONTROL BLANKET



REVISIONS	
NAME	DATE

ILLINOIS DEPARTMENT OF TRANSPORTATION  
**PLAN AND PROFILE**  
**ILLINOIS ROUTE 40**  
SERVICE DRIVE NO. 2  
STA. 1+825 TO STA. 1+925  
SCALE: 1:400 H / 1:40 V  
DATE: 03/13/09  
DRAWN BY: JRC, JDU  
CHECKED BY: ECM