

SEC. 18 & 19, T.10N., R.8E., 4th P.M.

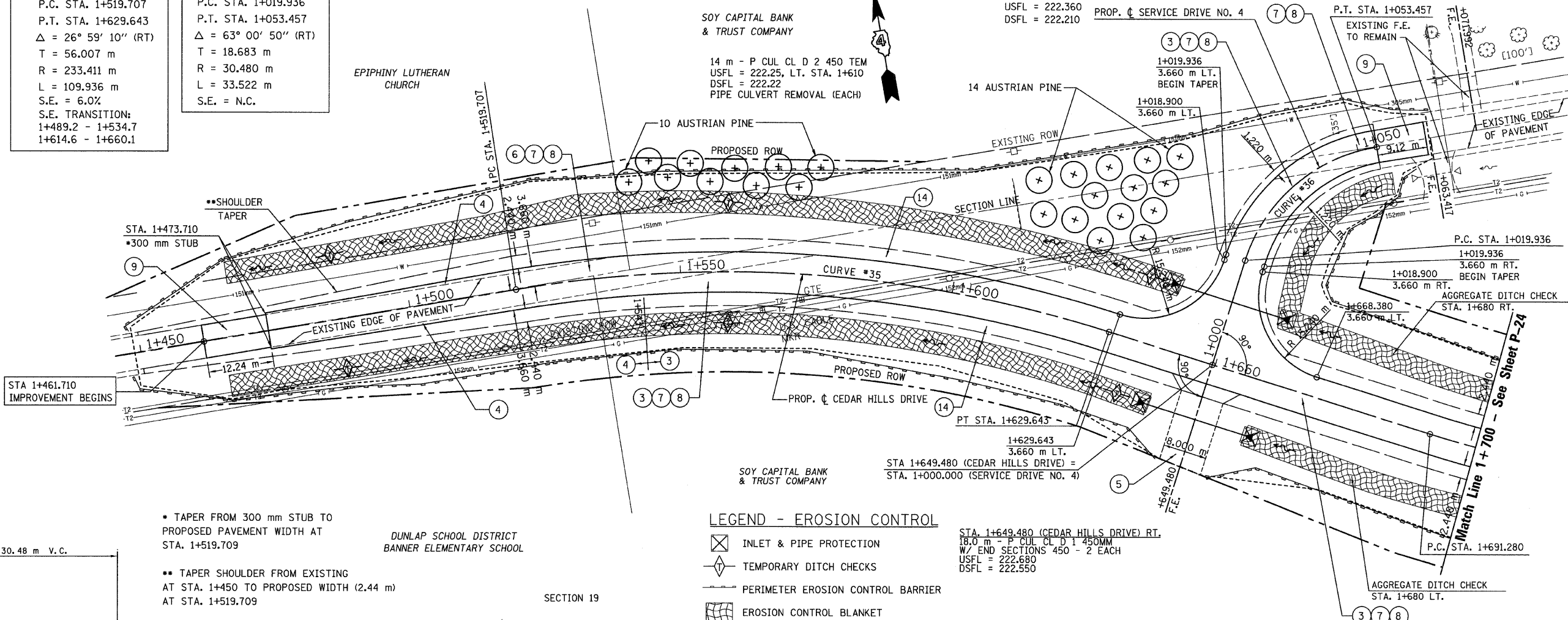
RTE NO.	SECTION	COUNTY	TOTAL	SHEET #
FA 646	125W-1, RS-2	PEORIA	256	110

LEGEND

- 1 FABRIC FORMED CONCRETE REVELMENT MAT
- 2 AGGREGATE BASE COURSE
- 3 HOT-MIX ASPHALT BASE COURSE
- 4 HOT-MIX ASPHALT BASE COURSE WIDENING
- 5 AGGREGATE SURFACE COURSE
- 6 LEVELING BINDER (MACHINE METHOD)
- 7 HOT-MIX ASPHALT BINDER COURSE
- 8 POLYMERIZED HOT-MIX ASPHALT SURFACE COURSE
- 9 HOT-MIX ASPHALT REMOVAL-BUTT JOINT
- 10 HOT-MIX ASPHALT PAVEMENT (FULL-DEPTH)
- 11 PORTLAND CEMENT CONCRETE PAVEMENT
- 12 PORTLAND CEMENT CONCRETE SIDEWALK
- 13 HOT-MIX ASPHALT REMOVAL (VAR. DEPTH)
- 14 AGGREGATE SHOULDERS
- 15 HOT-MIX ASPHALT SHOULDERS
- 16 COMBINATION CONCRETE CURB AND GUTTER

**CURVE #35**  
 P.I. STA. 1+575.714  
 P.C. STA. 1+519.707  
 P.T. STA. 1+629.643  
 $\Delta = 26^\circ 59' 10''$  (RT)  
 T = 56.007 m  
 R = 233.411 m  
 L = 109.936 m  
 S.E. = 6.0%  
 S.E. TRANSITION:  
 1+489.2 - 1+534.7  
 1+614.6 - 1+660.1

**Curve #36**  
 P.I. STA. 1+038.619  
 P.C. STA. 1+019.936  
 P.T. STA. 1+053.457  
 $\Delta = 63^\circ 00' 50''$  (RT)  
 T = 18.683 m  
 R = 30.480 m  
 L = 33.522 m  
 S.E. = N.C.

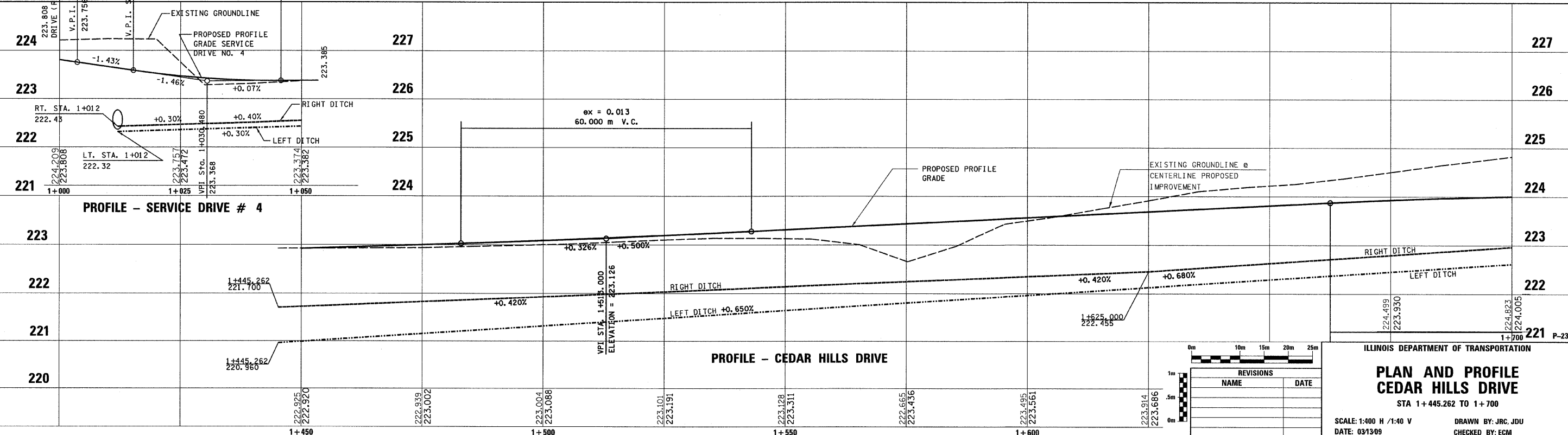


LEGEND - EROSION CONTROL

- INLET & PIPE PROTECTION
- TEMPORARY DITCH CHECKS
- PERIMETER EROSION CONTROL BARRIER
- EROSION CONTROL BLANKET

\* TAPER FROM 300 mm STUB TO PROPOSED PAVEMENT WIDTH AT STA. 1+519.709

\*\* TAPER SHOULDER FROM EXISTING AT STA. 1+450 TO PROPOSED WIDTH (2.44 m) AT STA. 1+519.709



REVISIONS	
NAME	DATE

ILLINOIS DEPARTMENT OF TRANSPORTATION

**PLAN AND PROFILE CEDAR HILLS DRIVE**

STA 1+445.262 TO 1+700

SCALE: 1:400 H / 1:40 V

DATE: 03/13/09

DRAWN BY: JRC, JDU

CHECKED BY: ECM