

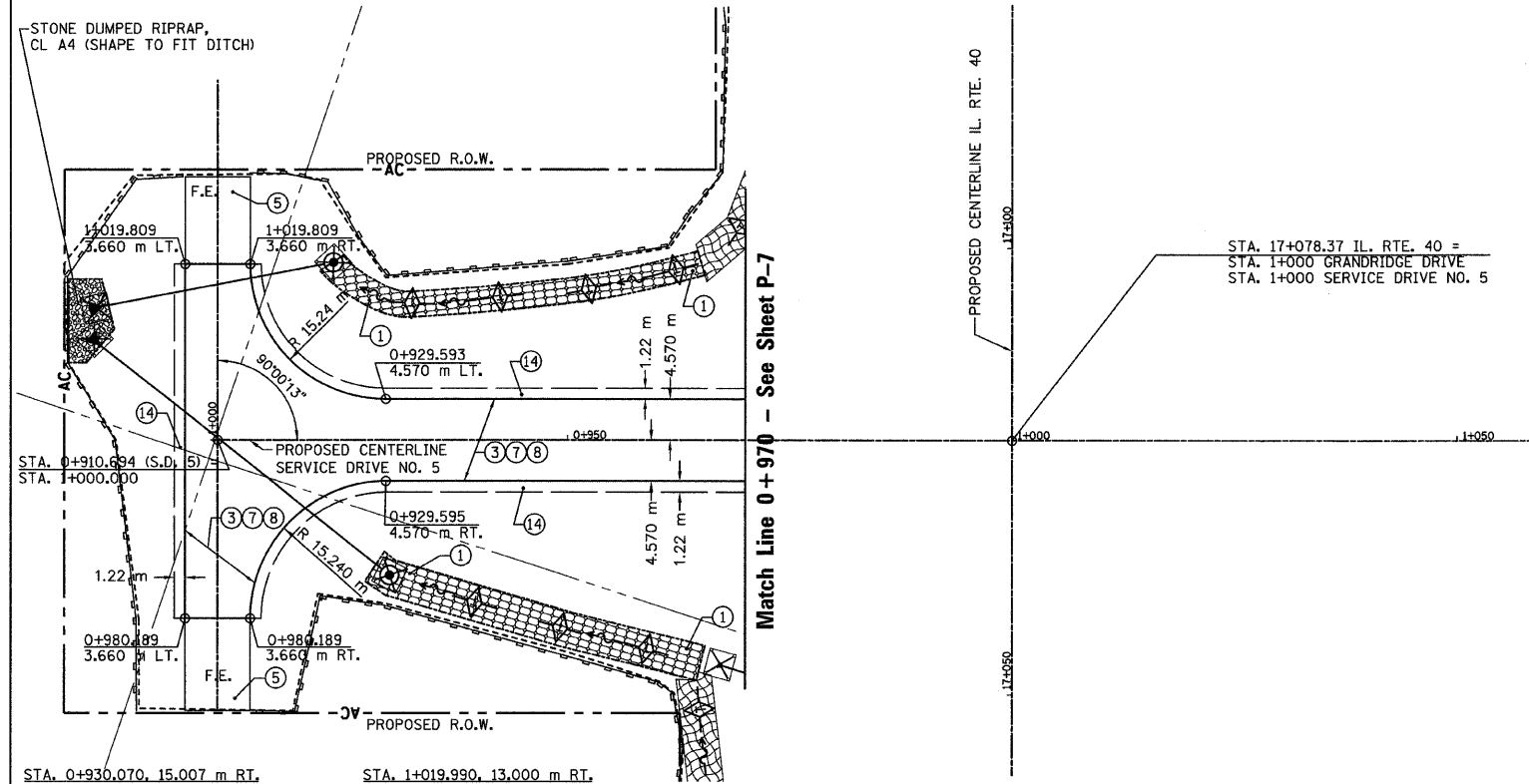
T.B.M. "11" - NW CAP BOLT FIRE HYD.
STA. 16+687±, 52 m± RT.
ELEV. = 236.614

SEC. 20 T.10N., R.8E., 4th P.M.

RTE NO.	SECTION	COUNTY	TOTAL	SHEET #
FA 646	125W-1, RS-2	PEORIA	256	114
STATION 0+910.69 TO STATION 1+970				

LEGEND

- ① FABRIC FORMED CONCRETE REVETMENT MAT
- ② AGGREGATE BASE COURSE
- ③ HOT-MIX ASPHALT BASE COURSE
- ④ HOT-MIX ASPHALT BASE COURSE WIDENING
- ⑤ AGGREGATE SURFACE COURSE
- ⑥ LEVELING BINDER (MACHINE METHOD)
- ⑦ HOT-MIX ASPHALT BINDER COURSE
- ⑧ POLYMERIZED HOT-MIX ASPHALT SURFACE COURSE
- ⑨ HOT-MIX ASPHALT REMOVAL-BUTT JOINT
- ⑩ HOT-MIX ASPHALT PAVEMENT (FULL-DEPTH)
- ⑪ PORTLAND CEMENT CONCRETE PAVEMENT
- ⑫ PORTLAND CEMENT CONCRETE SIDEWALK
- ⑬ HOT-MIX ASPHALT REMOVAL (VAR. DEPTH)
- ⑭ AGGREGATE SHOULDERS
- ⑮ HOT-MIX ASPHALT SHOULDERS
- ⑯ COMBINATION CONCRETE CURB AND GUTTER



STA. 0+930.070, 15.007 m RT.
MAN A 1.50 / MI 604106
RIM ELEV. = 230.800
INVERT = 229.400

41 m - P CUL CL A 2 600

STA. 1+019.990, 13.000 m RT.
MANHOLE, TYPE A, 1.2M DIA.
W/ MEDIAN INLET (604101)
RIM ELEV. = 230.400
INVERT = 229.250

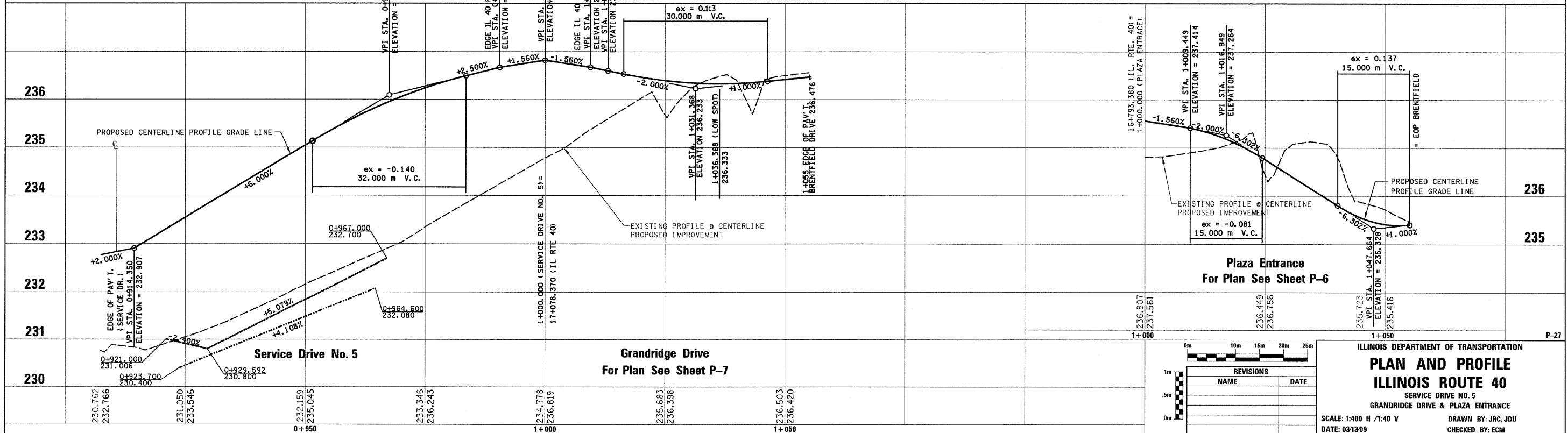
26 m - P CUL CL A 2 450

STA. 1+011.074, 13.752 m LT.
PRC FL-END SEC 600
INV. = 228.990

STA. 1+014.929, 13.371 m LT.
PRC FL-END SEC 450
INV. = 228.990

LEGEND - EROSION CONTROL

- ☒ INLET & PIPE PROTECTION
- ◇ TEMPORARY DITCH CHECKS
- PERIMETER EROSION CONTROL BARRIER
- ▨ EROSION CONTROL BLANKET



REVISIONS	
NAME	DATE

ILLINOIS DEPARTMENT OF TRANSPORTATION
PLAN AND PROFILE
ILLINOIS ROUTE 40
SERVICE DRIVE NO. 5
GRANDRIDGE DRIVE & PLAZA ENTRANCE
SCALE: 1:400 H / 1:40 V
DATE: 03/13/09
DRAWN BY: JRC, JDU
CHECKED BY: ECM