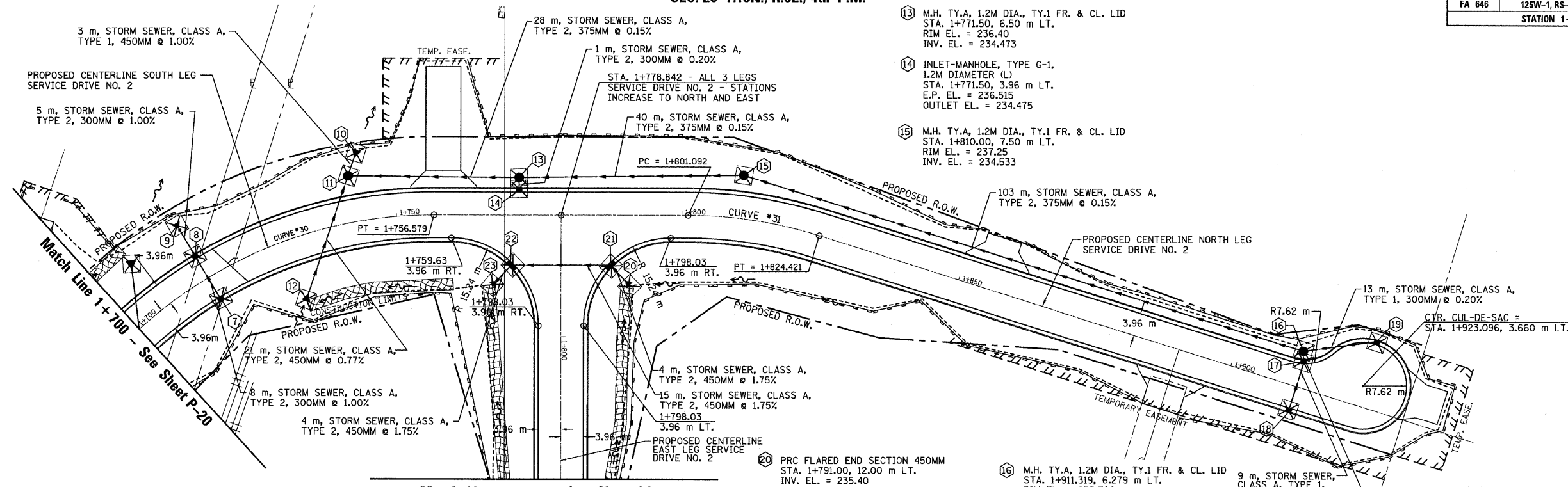


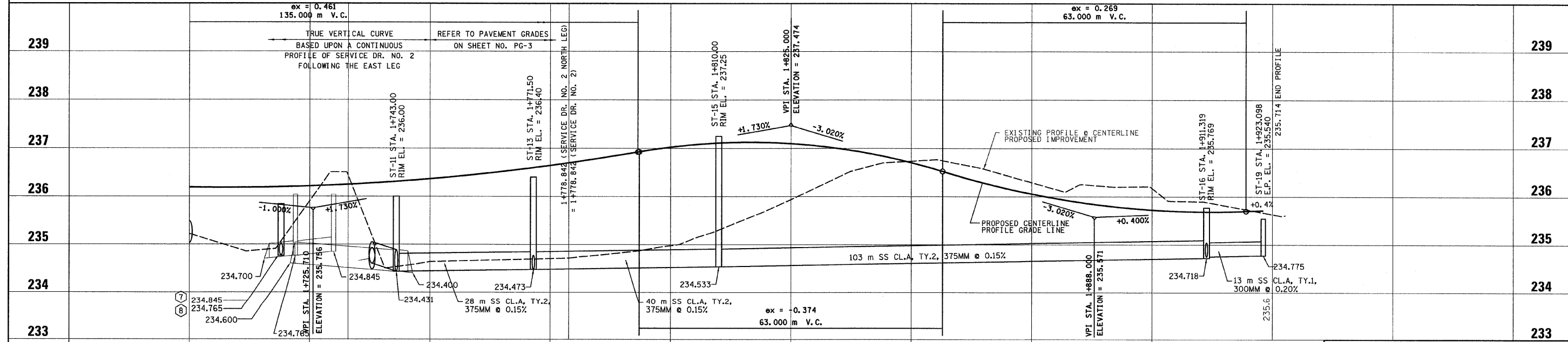
SEC. 20 T.10N., R.8E., 4th P.M.

RTE NO.	SECTION	COUNTY	TOTAL	SHEET #
FA 646	125W-1, RS-2	PEORIA	256	116
STATION 1+700 TO STATION 1+825				



- 7 INLET, TYPE G-1, (R)
STA. 1+715.00, 3.96 m RT.
E.P. EL. = 236.038
OUTLET EL. = 234.845
- 8 INLET-MANHOLE, TYPE G-1,
1.2M DIAMETER (L)
STA. 1+715.00, 3.96 m LT.
E.P. EL. = 236.038
OUTLET EL. = 234.765
INLET EL. = 234.765
- 9 PRC FLARED END SECTION 300MM
STA. 1+715.00, 11.00 m LT.
INV. EL. = 234.700
- 10 PRC FLARED END SECTION 450MM
STA. 1+744.00, 12.00 m LT.
INV. EL. = 234.40
- 11 M.H. TY.A, 1.2 M DIA., TY.1 FR. & CL. LID
STA. 1+743.00, 8.00 m LT.
RIM EL. = 236.00
INV. EL. = 234.431
- 12 PRC FLARED END SECTION 450MM
STA. 1+730.00, 11.00 m RT.
INV. EL. = 234.60
- 13 M.H. TY.A, 1.2M DIA., TY.1 FR. & CL. LID
STA. 1+771.50, 6.50 m LT.
RIM EL. = 236.40
INV. EL. = 234.473
- 14 INLET-MANHOLE, TYPE G-1,
1.2M DIAMETER (L)
STA. 1+771.50, 3.96 m LT.
E.P. EL. = 236.515
OUTLET EL. = 234.475
- 15 M.H. TY.A, 1.2M DIA., TY.1 FR. & CL. LID
STA. 1+810.00, 7.50 m LT.
RIM EL. = 237.25
INV. EL. = 234.533
- 16 M.H. TY.A, 1.2M DIA., TY.1 FR. & CL. LID
STA. 1+911.319, 6.279 m LT.
RIM EL. = 235.769
INV. EL. = 234.718
- 17 INLET, TYPE G-1, (R)
STA. 1+911.319, 6.279 m LT.
E.P. EL. = 235.597
OUTLET EL. = 234.753
- 18 INLET, TYPE G-1, (L)
STA. 1+911.996, 3.960 m RT.
E.P. EL. = 235.600
OUTLET EL. = 234.802
- 19 INLET, TYPE G-1, (L)
STA. 1+923.096, 11.280 m LT.
E.P. EL. = 235.540
OUTLET EL. = 234.775
- 20 PRC FLARED END SECTION 450MM
STA. 1+791.00, 12.00 m LT.
INV. EL. = 235.40
- 21 INLET-MANHOLE, TYPE G-1,
1.2M DIAMETER (R)
STA. 1+787.266, 8.424 m LT.
E.P. EL. = 236.800
OUTLET EL. = 235.333
INLET EL. = 235.333
- 22 INLET-MANHOLE, TYPE G-1,
1.2M DIAMETER (R)
STA. 1+770.419, 8.424 m RT.
E.P. EL. = 236.654
OUTLET EL. = 235.070
INLET EL. = 235.070
- 23 PRC FLARED END SECTION 450MM
STA. 1+791.00, 12.00 m RT.
INV. EL. = 235.00

NOTE: ALL GRATES SHALL BE "CAST DIAGONAL". THE DIRECTION OF FLOW IS INDICATED IN PARENTHESIS, (L) OR (R).



REVISIONS	
NAME	DATE

ILLINOIS DEPARTMENT OF TRANSPORTATION SS-1
STORM SEWER PLAN AND PROFILE
 SERVICE DRIVE NO. 2
 STA. 1+700 TO STA. 1+923.095
 SCALE: 1:400 H / 1:40 V
 DATE: 03/13/09
 DRAWN BY: JRC, JDU
 CHECKED BY: ECM