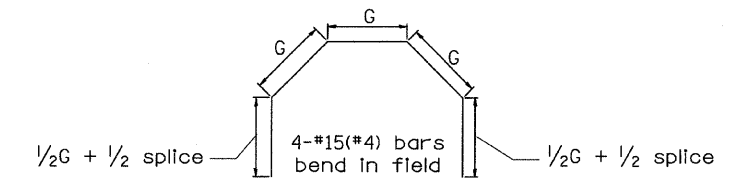


EXISTING BOX		EACH COLLAR								
W	H	A	B	D	f	CONC. COLLAR	REINFORCEMENT BARS			EXPANSION BOLT
						m³ (CU. YD.)	g	L	KG (LBS.)	EACH
300(12)	PIPE	810 (32)	810 (32)	300 (12)	50(2)	0.14(0.18)	254 (10)	1.40m (4'-7")	9(12)	4
450(18)	PIPE	990 (39)	990 (39)	450 (18)	65(2 1/2)	0.18(0.24)	324 (12 3/4)	1.68m (5'-6")	11(15)	4
600(24)	PIPE	1.17m (3'-10")	1.17m (3'-10")	600 (24)	75(3)	0.23(0.30)	400 (15 3/4)	1.98m (6'-6")	12(17)	4
600(24)	600(24)	1.35m (4'-5")	1.35m (4'-5")	750 (30)	90(3 1/2)	0.28(0.37)	416 (18 3/4)	2.29m (7'-6")	14(20)	4
750(30)	750(30)	1.52m (5'-0")	1.52m (5'-0")	900 (36)	100(4)	0.34(0.45)	546 (21 1/2)	2.57m (8'-5")	16(22)	8
900(36)	900(36)	1.7m (5'-7")	1.7m (5'-7")	1050 (42)	115(4 1/2)	0.38(0.50)	622 (24 1/2)	2.87m (9'-5")	18(25)	10
1050(42)	1050(42)	1.88m (6'-2")	1.88m (6'-2")	1200 (48)	125(5)	0.47(0.61)	692 (27 1/4)	3.15m (10'-4")	20(28)	10
1200(48)	1200(48)	2.06m (6'-9")	2.06m (6'-9")	1350 (54)	140(5 1/2)	0.61(0.80)	768 (30 1/4)	3.45m (11'-4")	22(30)	10



GENERAL NOTES

- The collar shall be constructed entirely of CLASS SI CONCRETE and in accordance with the applicable portions of Section 503 of the Standard Specifications. Reinforcement Bars shall conform to Section 508.
- Expansion Bolts shall consist of approved Expansion Anchors, and M20(3/4) Hook Bolts which conform to Section 1006.09. These Bolts shall extend at least 200(8) into the new Concrete.

All dimensions are in millimeters (inches) unless otherwise noted.

QUANTITIES	
CALC. BY: _____	DATE: _____
CHECKED BY: _____	DATE: _____
QUANTITY CALCULATIONS ARE ON FILE AT THE DISTRICT 4 OFFICE; BUREAU OF PROJECT IMPLEMENTATION; DOCUMENTATION SECTION	

DATE	REVISIONS	BY
1-1-97	RENUM. J-11.02, NEW REVISION BOX, REVISED TITLE BOX, ADDED QUANTITY CALCULATION BOX.	T.P.

ILLINOIS DEPARTMENT OF TRANSPORTATION
DISTRICT CADD STANDARD
PIPE CULVERT EXTENSION COLLAR
(WITH END SECTION)
 CADD STD. NO. 542001-04
 SCALE: NOT DRAWN TO SCALE
 DATE **DATE**
 DRAWN BY CADD
 CHECKED BY

\$\$\$DATE\$\$\$