

F.A. RTE.	SECTION	COUNTY	TOTAL SHEETS	SHEET NO.
CH D56	08-00041-02-BR	PEORIA	25	1
FED. ROAD DIST. NO. -		ILLINOIS	CONTRACT NO. 89479	

INDEX OF SHEETS

1. COVER
2. GENERAL NOTES AND LEGEND
3. SUMMARY AND SCHEDULE OF QUANTITIES
4. TYPICAL SECTIONS
5. PLAN & PROFILE
6. REMOVAL PLAN
7. EROSION CONTROL PLAN
8. GUARDRAIL PLAN
- 9.-19. BRIDGE PLANS
20. TRAFFIC DETOUR PLAN
- 21.-25. CROSS SECTIONS

STATE OF ILLINOIS
DEPARTMENT OF TRANSPORTATION
DIVISION OF HIGHWAYS

PLANS FOR PROPOSED TODD SCHOOL ROAD BRIDGE

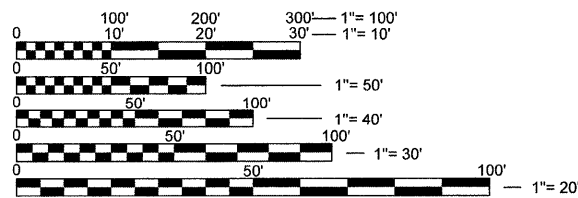
TODD SCHOOL ROAD (C.H. D56)
PEORIA COUNTY
SECTION 08-00041-02-BR
JOB NO. C-94-081-07
PROJECT NO. BROS-0143(048)

LIST OF STANDARDS

- | | |
|-------------|--|
| 000001-05 | STANDARD SYMBOLS, ABBREVIATIONS AND PATTERNS |
| 280001-04 | TEMPORARY EROSION CONTROL SYSTEMS |
| 285001-02 | FABRIC FORMED CONCRETE REVETMENT MATS |
| 515001-03 | NAME PLATE FOR BRIDGES |
| 630001-08 | STEEL PLATE BEAM GUARDRAIL |
| 630301-05 | SHOULDER WIDENING FOR TYPE 1 (SPECIAL) GUARDRAIL TERMINALS |
| 631032-04 | TRAFFIC BARRIER TERMINAL, TYPE 6A |
| 635006-03 | REFLECTOR AND TERMINAL MARKER PLACEMENT |
| 666001-01 | RIGHT-OF-WAY MARKERS |
| 701006-0 | OFF-RD OPERATIONS, 2L, 2W, 15' TO 24" FROM PAVEMENT EDGE |
| 701901-01 | TRAFFIC CONTROL DEVICES |
| 720001-01 | SIGN PANEL MOUNTING DETAILS |
| 720006-02 | SIGN PANEL ERECTION DETAILS |
| 728001-01 | TELESCOPING STEEL SIGN SUPPORT |
| 731001-01 | BASE FOR TELESCOPING STEEL SIGN SUPPORT |
| 780001-02 | TYPICAL PAVEMENT MARKINGS |
| B.L.R. 21-8 | TYPICAL APPLICATION OF TRAFFIC CONTROL DEVICES FOR CONSTRUCTION ON RURAL LOCAL HIGHWAYS |
| B.L.R. 22-6 | TYPICAL APPLICATION OF TRAFFIC CONTROL DEVICES FOR CONSTRUCTION ON RURAL LOCAL HIGHWAYS (TWO-LANE TWO WAY RURAL TRAFFIC) (ROAD CLOSED TO THRU TRAFFIC) |
| BLP23-3 | TRAFFIC BARRIER TERMINAL TYPE 1 |

DISTRICT STANDARDS

- | | |
|-----------|--------------------|
| 205001-D4 | SLOPE STEPS DETAIL |
|-----------|--------------------|



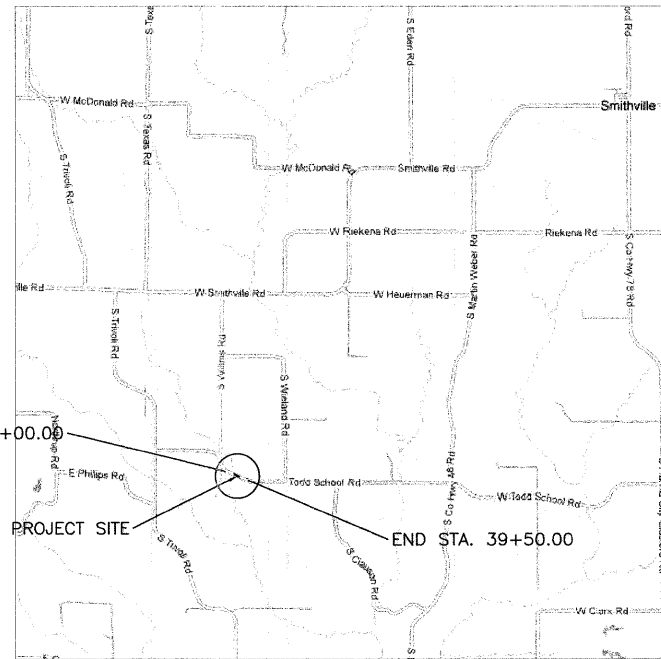
FULL SIZE PLANS HAVE BEEN PREPARED USING STANDARD ENGINEERING SCALES. REDUCED SIZED PLANS WILL NOT CONFORM TO STANDARD SCALES. IN MAKING MEASUREMENTS ON REDUCED PLANS, THE ABOVE SCALES MAY BE USED.

J.U.L.I.E.
JOINT UTILITY LOCATION INFORMATION FOR EXCAVATION
1-800-892-0123
OR 811

CATALOG NO. 033524-00D

ADT (2002) = 125, MU = 12%
HIGHWAY CLASS: IV
FUNCTIONAL CLASSIFICATION: MINOR COLLECTOR
DESIGN SPEED: 25 MPH
DESIGN POLICY: BLR MANUAL
VARIANCES GRANTED: 25 MPH
COMMITMENTS: NONE

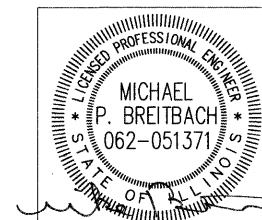
TOTAL AND NET LENGTH OF IMPROVEMENT: 350.0 FT = 0.066 MILES



SECTION 6 T7N R6E 4TH PM



LOCATION OF SECTION INDICATED THIS: - [Black Box] -



DATE SIGNED : 05/21/2009
LIC. EXP. DATE : 11/30/2009

PRINTED BY THE AUTHORITY OF THE STATE OF ILLINOIS

APPROVED May 22 2009
Donna J. McFarland
COUNTY ENGINEER

PASSED 5-26 2009
D. McCoy
DISTRICT FOUR ENGINEER OF LOCAL ROADS & STREETS

Releasing For Bid Based on Limited Review May 29 2009
[Signature]
DEPUTY DIRECTOR OF HIGHWAYS, REGION THREE ENGINEER

STATE OF ILLINOIS
DEPARTMENT OF TRANSPORTATION

DATE: 05/21/09

Hanson Professional Services Inc.
2900 W. Willow Knolls Road
Peoria, Illinois 61614-1129