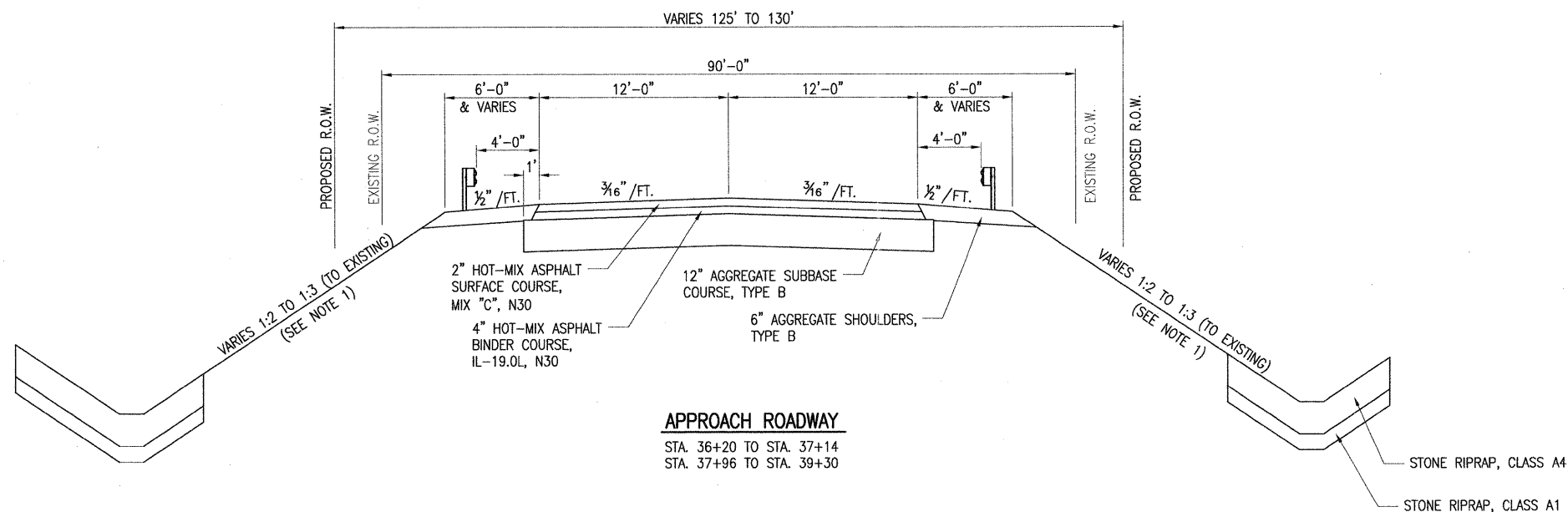
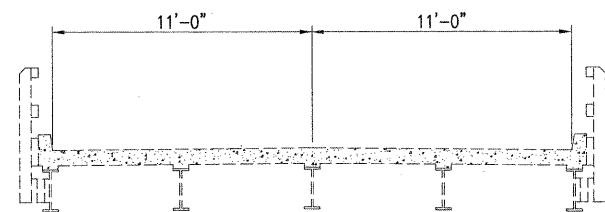


EXISTING ROADWAY

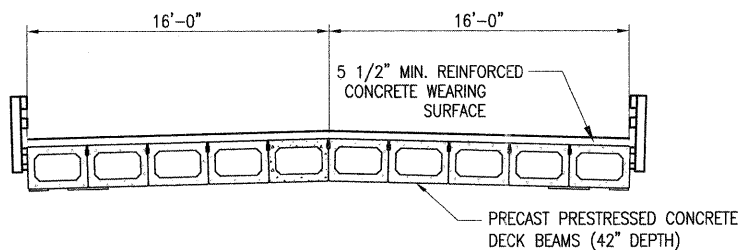


APPROACH ROADWAY

STA. 36+20 TO STA. 37+14
STA. 37+96 TO STA. 39+30

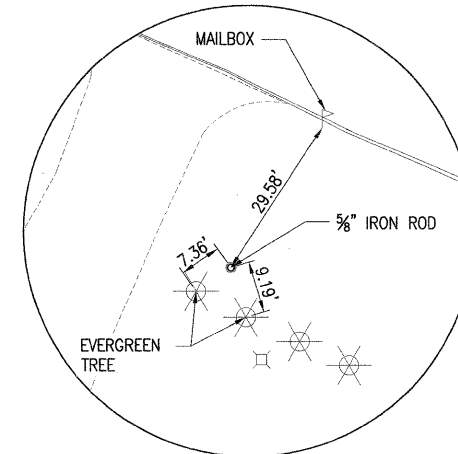


EXISTING BRIDGE SECTION

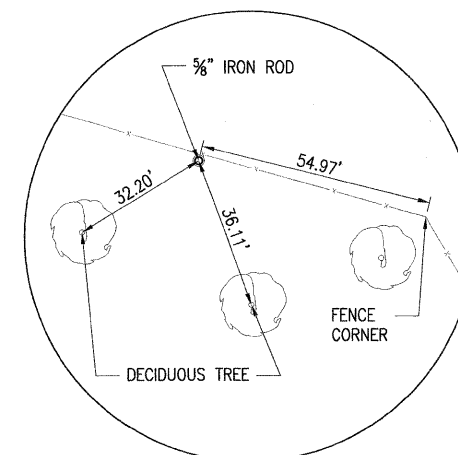


PROPOSED BRIDGE SECTION

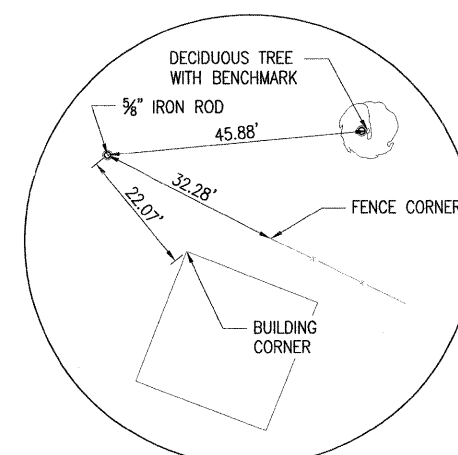
STA. 37+14 TO STA. 37+96



CONTROL POINT #59
STA. 39+89.42, 43.91' RT.
N = 1,439,049.76
E = 2,381,799.52



CONTROL POINT #60
STA. 39+41.46, 72.38' LT.
N = 1,439,175.52
E = 2,381,802.23



CONTROL POINT #61
STA. 38+61.75, 91.24' RT.
N = 1,439,057.61
E = 2,381,663.59

NOTE:
1. PROVIDE GUARDRAIL FOR LOCATIONS WITH 1:2 FORESLOPE.

HOT-MIX ASPHALT MIXTURE REQUIREMENTS:

	PG	RAP (MAX)**	VOIDS	DEPTH	MIXTURE COMPOSITION
SURFACE COURSE	64-28	15%	N30	2"	IL-9.5L
BINDER COURSE	64-28	25%	N30	4"	IL-19.0L

** IF >15% RAP IS USED, THE CONTRACTOR MAY BE REQUIRED TO USE A SOFTER GRADE OF ASPHALT AS DETERMINED BY THE MATERIALS ENGINEER.

STATION EQUATIONS

STA. 35+67.75 BACK = *
STA. 35+61.15 AHEAD **
STA. 43+83.10 BACK = **
STA. 43+89.70 AHEAD *

* BASED ON EXISTING RIGHT OF WAY PLANS
** BASED ON PROPOSED BASELINE THIS PROJECT

FILE NAME =	USER NAME = \$USER\$	DESIGNED - DLC 1/26/09	REVISED -	STATE OF ILLINOIS DEPARTMENT OF TRANSPORTATION	TYPICAL SECTIONS AND RECOVERY TIES TODD SCHOOL ROAD BRIDGE REPLACEMENT	F.A. RTE.	SECTION	COUNTY	TOTAL SHEETS	SHEET NO.	
\$FILE\$		DRAWN - DLC 1/30/09	REVISED -			CH D56	08-00041-02-BR	PEORIA	25	4	
		CHECKED - MPB 5/15/09	REVISED -			CONTRACT NO. 89479					
		DATE -	REVISED -			FED. ROAD DIST. NO. 7 ILLINOIS FED. AID PROJECT					