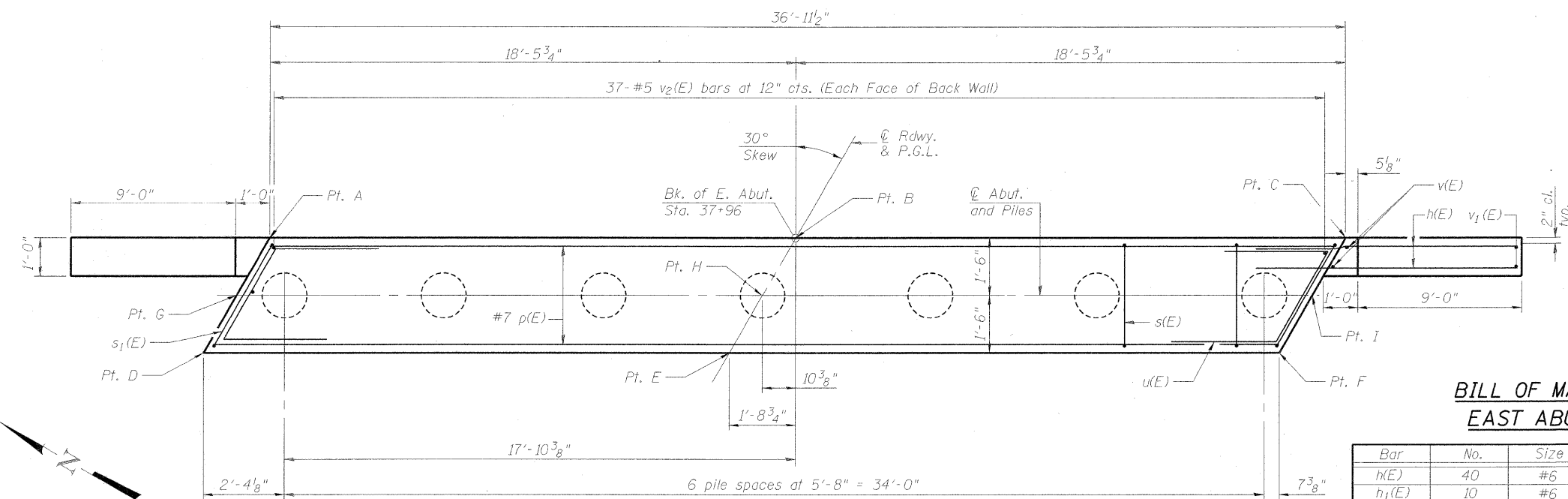
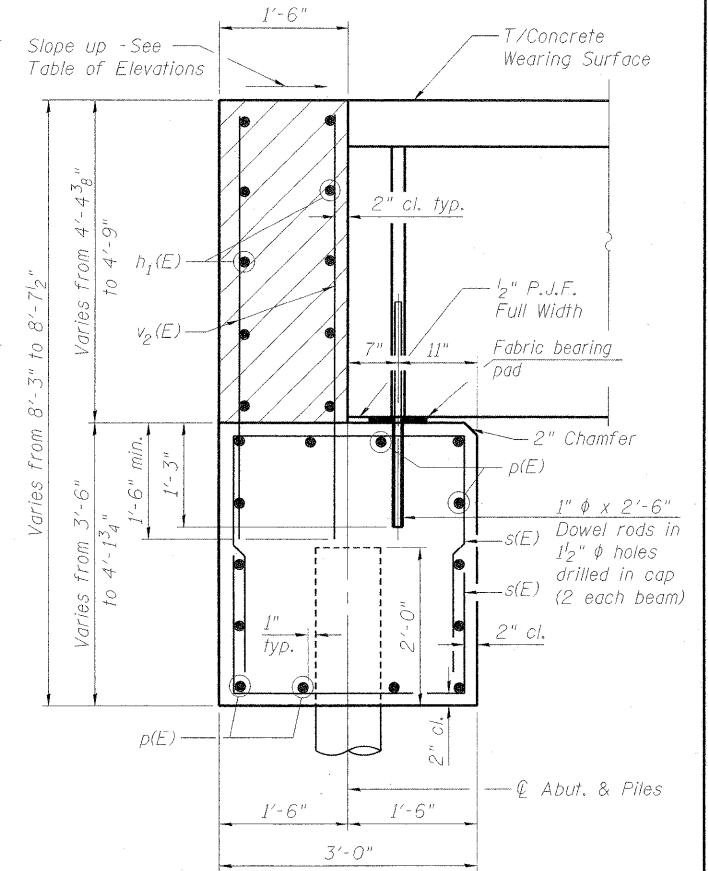


ELEVATION
(Looking East)

Dimensions given are at back of abutment



PLAN



SECTION THRU ABUTMENT

All dimensions at Rt. L to cap

**BILL OF MATERIAL
EAST ABUTMENT**

Bar	No.	Size	Length	Shape
h(E)	40	#6	13'-0"	—
h1(E)	10	#6	36'-7"	—
p(E)	14	#7	36'-7"	—
s(E)	84	#6	8'-8"	U
s1(E)	4	#6	9'-1"	U
u(E)	10	#6	8'-11"	∩
v(E)	4	#4	8'-4"	—
v1(E)	10	#4	12'-5"	—
v2(E)	74	#5	5'-8"	—
v3(E)	10	#4	11'-7"	—
Structure Excavation		Cu. Yd.	119	
Concrete Structures		Cu. Yd.	30.3	
Reinforcement Bars, Epoxy Coated		Pound	4280	
Furnishing Metal Shell Piles		Foot	360	
Driving Piles		Foot	360	
Test Pile, Metal Shell		Each	1	

* Field cut as required in fit in S. Wing.

NOTES:

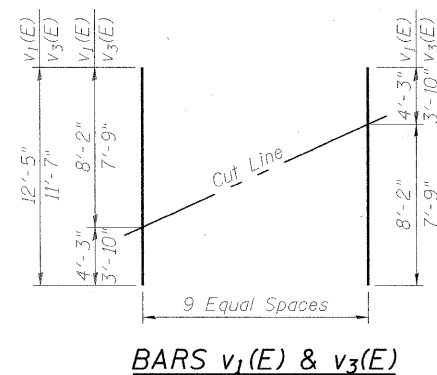
After beams have been erected, holes shall be drilled into substructure and anchor dowels placed. Dowel holes shall be filled with non-shrink grout to top of beam and allowed to cure min. 24 hrs. prior to grouting the shear keys. All horizontal dimensions are at right angles to beam ends. Hatched area to be poured after Concrete Wearing Surface is in place. See Section Thru Abutment on sheet 3 of 11. See sheet 5 of 11 for bearing pad details. Space cap reinforcement to miss Dowel Rods.

PILE DATA

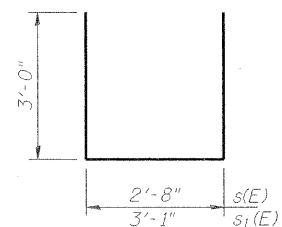
Type: Metal Shell - 14 in. dia. x 0.312 in. walls
Nominal Required Bearing: 440 Kips
Factored Resistance Available: 220 Kips
Est. Length: 60 ft.
No. Production Piles: 6
No. Test Piles: 1

TABLE OF ELEVATIONS - EAST ABUTMENT

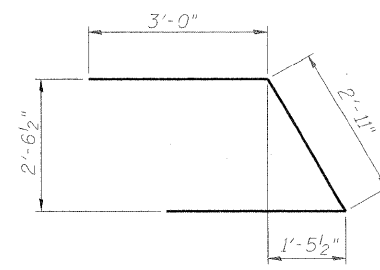
	Pt. A	Pt. B	Pt. C	Pt. D	Pt. E	Pt. F	Pt. G	Pt. H	Pt. I
T/Cap	543.81	543.72	543.16	543.93	543.84	543.28	—	—	—
T/Bk. Wall	548.29	548.08	547.91	—	—	—	548.33	548.12	547.94



BARS v1(E) & v3(E)



BARS s(E) & s1(E)



BAR u(E)

05/21/2009
P:\08\085\08\007\NADD\Struct\Sheet\009-E-AST-abutment.dgn
JMR 01/14/09
MMW 02/06/09
REVIEWED: SAK 02/06/09

Corporate License Number 184-001-084
© Copyright Hanson Professional Services Inc. 2009
02/06/09
HANSON

EAST ABUTMENT
TODD SCHOOL ROAD BRIDGE
OVER BRANCH OF COPPERAS CREEK
CH D56
SEC. 08-00041-02-BR
PEORIA COUNTY, ILLINOIS
STATION 37+55
STRUCTURE NO. 072-3144

SHEET NO. 9	CH	SECTION	COUNTY	TOTAL SHEETS	SHEET NO.
11 SHEETS	D56	08-00041-02-BR	PEORIA	25	17
			CONTRACT NO. 89479		

FED. ROAD DIST. NO. 2 ILLINOIS FED. AID PROJECT