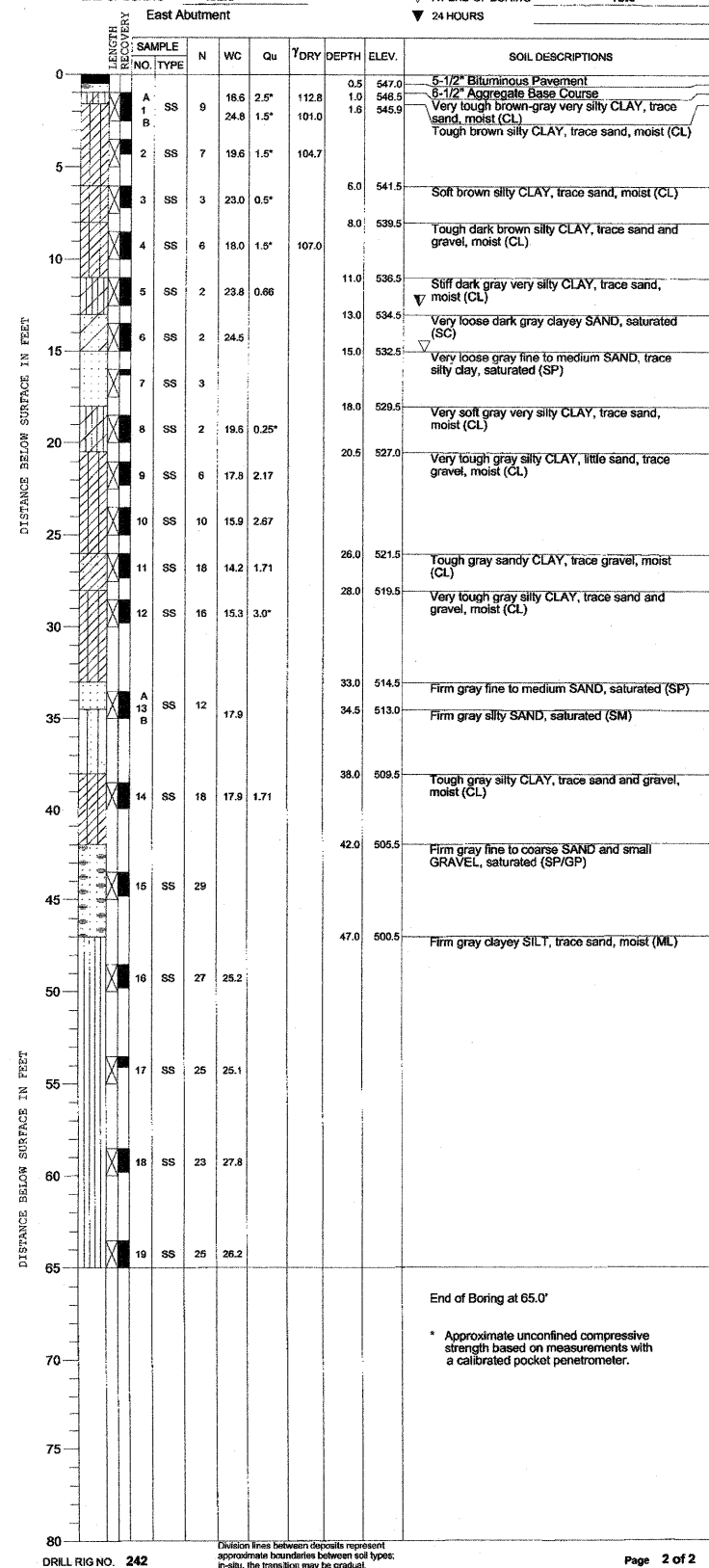
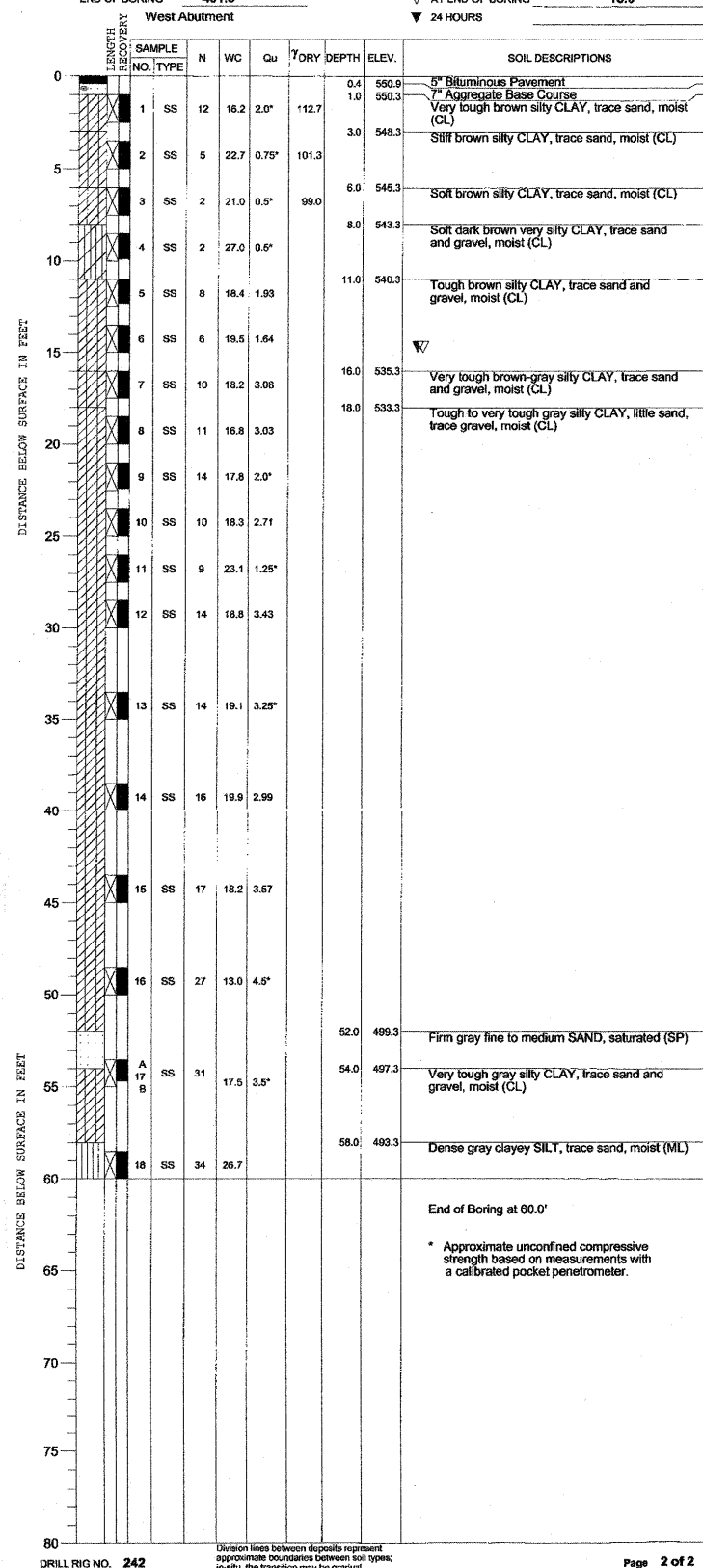


PROJECT **Todd School Road Bridge, Timber Township, Peoria County, Illinois**
 CLIENT **Hanson Professional Services, Inc., 2900 W. Willow Knolls Rd., Peoria, IL 61611**
 BORING **B-1** DATE STARTED **10-16-08** DATE COMPLETED **10-16-08** JOB **L-72,523**
 ELEVATIONS WATER TABLE
 GROUND SURFACE **547.5** WHILE DRILLING **12.5'**
 END OF BORING **482.5** AT END OF BORING **15.0'**
 East Abutment



PROJECT **Todd School Road Bridge, Timber Township, Peoria County, Illinois**
 CLIENT **Hanson Professional Services, Inc., 2900 W. Willow Knolls Rd., Peoria, IL 61611**
 BORING **B-2** DATE STARTED **10-16-08** DATE COMPLETED **10-16-08** JOB **L-72,523**
 ELEVATIONS WATER TABLE
 GROUND SURFACE **551.3** WHILE DRILLING **15.0'**
 END OF BORING **491.3** AT END OF BORING **15.0'**
 West Abutment



BORING LOGS
TODD SCHOOL ROAD BRIDGE
OVER BRANCH OF COPPERAS CREEK
CH D56
SEC. 08-00041-02-BR
PEORIA COUNTY, ILLINOIS
STATION 37+55
STRUCTURE NO. 072-3144

05-22-2009
 1408-608-08-007-00-ADD-STRUC-Steel-S-011-001-rps.dgn
 LAYOUT: JAV 10/17/09
 DRAWN: MDM 05/21/09
 REVIEWED: SWK 05/21/09

Corporate License Number 184-001-084
 © Copyright Hanson Professional Services Inc. 2008

 DRILL RIG NO. 08L0071
 DATE 5/21/09

SHEET NO. 11	CH	SECTION	COUNTY	TOTAL SHEETS	SHEET NO.
	D56	08-00041-02-BR	PEORIA	25	19
11 SHEETS			CONTRACT NO. 89479		
FED. ROAD DIST. NO. 2 ILLINOIS FED. AID PROJECT					