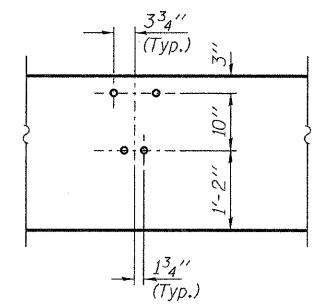


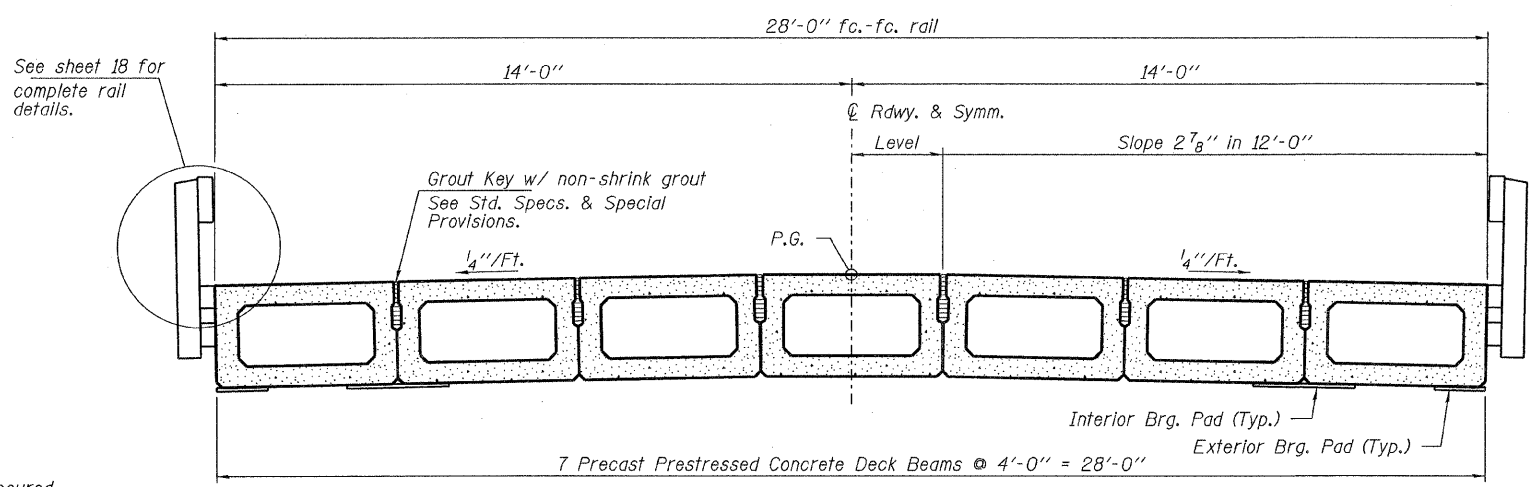
ELEVATION
Showing Rail Post Spaces
See sheet 18 for Railing Details.

Curled End Sections (Typ.)
See sheet 18 for details.

See Detail A for
Rail Insert Details.



DETAIL A

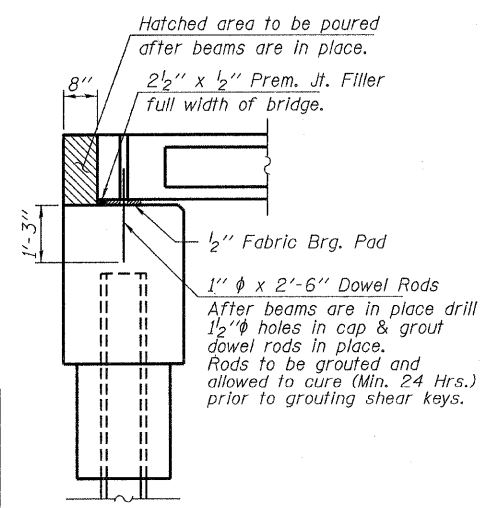


CROSS SECTION
See sheets 15 & 16 for Superstructure.

See sheet 18 for
complete rail
details.

Grout Key w/ non-shrink grout
See Std. Specs. & Special
Provisions.

Interior Brg. Pad (Typ.)
Exterior Brg. Pad (Typ.)



SECTION AT ABUTMENTS
© Rt. L's

Hatched area to be poured
after beams are in place.

2 1/2" x 1/2" Prem. Jt. Filler
full width of bridge.

1" Fabric Brg. Pad
1" ϕ x 2'-6" Dowel Rods
After beams are in place drill
1/2" ϕ holes in cap & grout
dowel rods in place.
Rods to be grouted and
allowed to cure (Min. 24 Hrs.)
prior to grouting shear keys.

DESIGNED - A.S.L.
CHECKED - S.W.M.
DRAWN - D.A.B.
CHECKED - D.T.M.

SUPERSTRUCTURE DETAILS
STRUCTURE NO. 088-3223

 HAMPTON, LENZINI & RENWICK, INC. CIVIL & STRUCTURAL ENGINEERS LAND SURVEYORS 3085 STEVENSON DRIVE, SUITE 201 SPRINGFIELD, ILLINOIS 62703 (217) 546-3400 PROJECT NUMBER: 08.0274.130 DATE: 05/13/09	C.H.	SECTION	COUNTY	TOTAL SHEETS	SHEET NO.
	23	08-00158-00-BR	STARK	23	17
FED. ROAD DIST. NO.			ILLINOIS	FED. AID PROJECT	
CONTRACT NO. 89509					