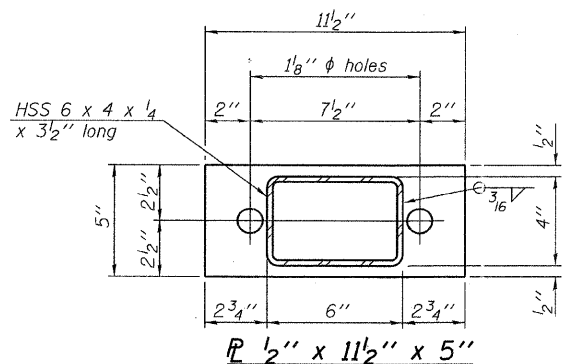
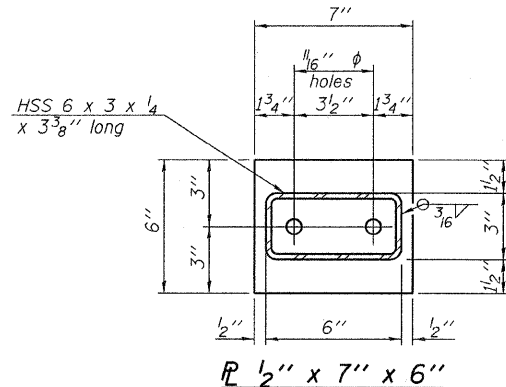


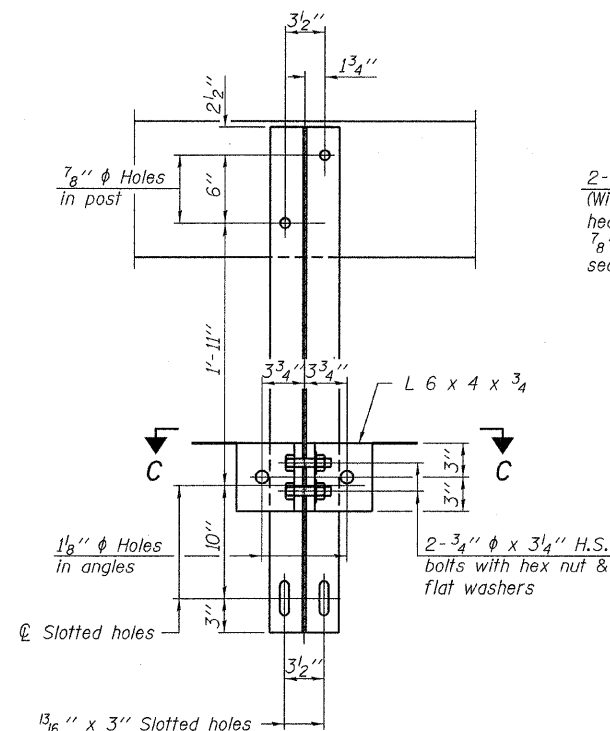
**VIEW A-A  
ROUND HEAD BOLT**



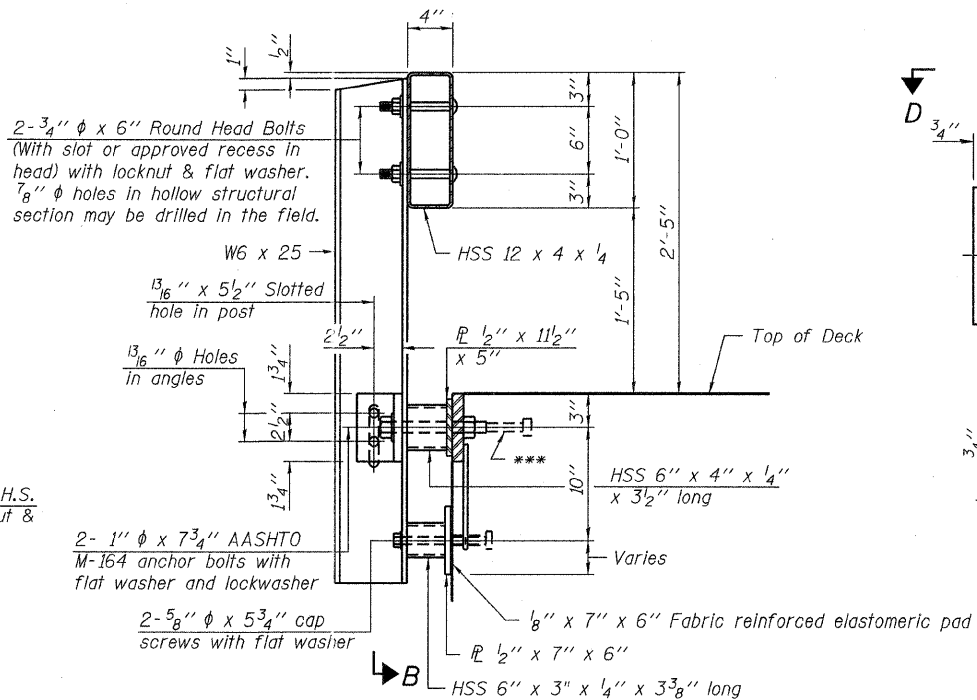
**SECTION B-B**



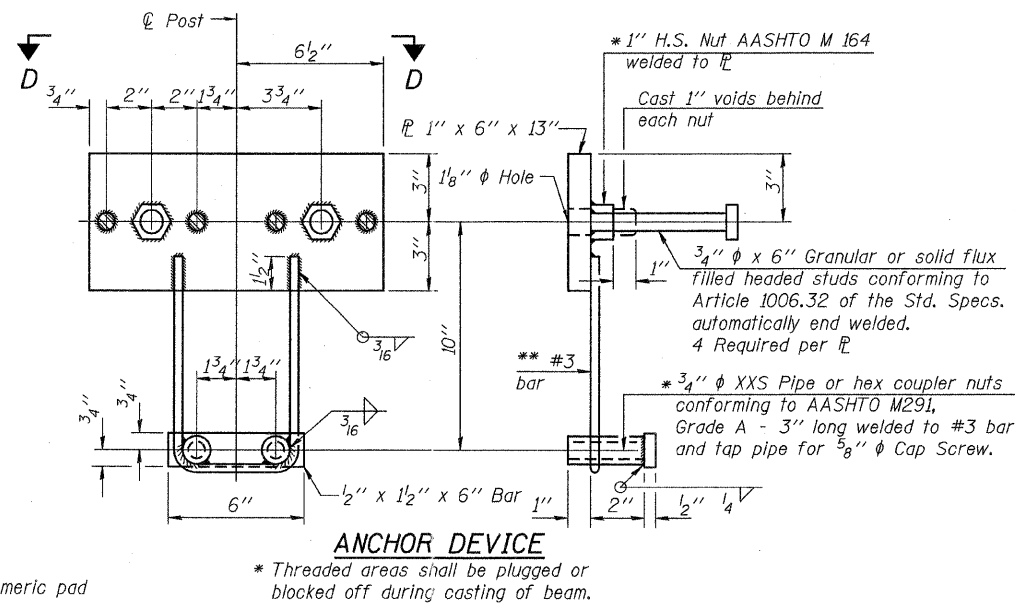
**SECTION C-C**



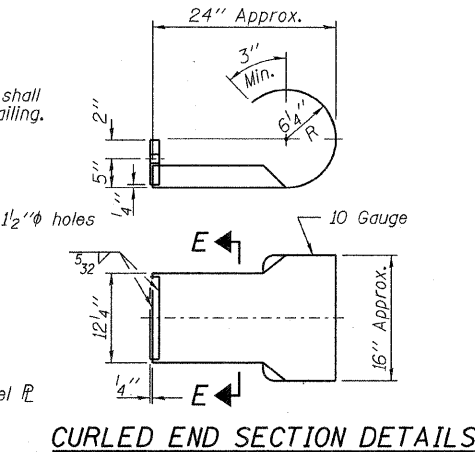
**SECTION B-B**



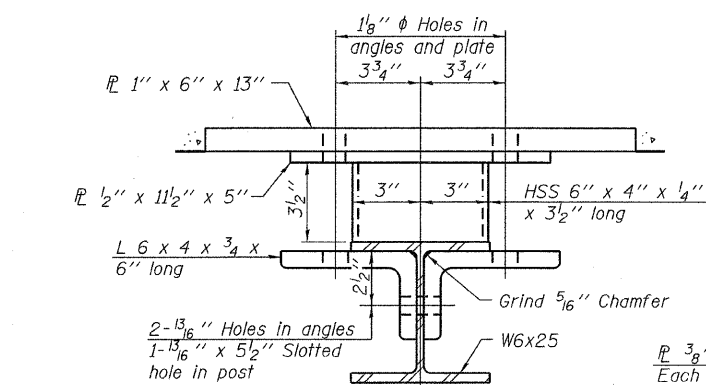
**SECTION AT RAILING POST**



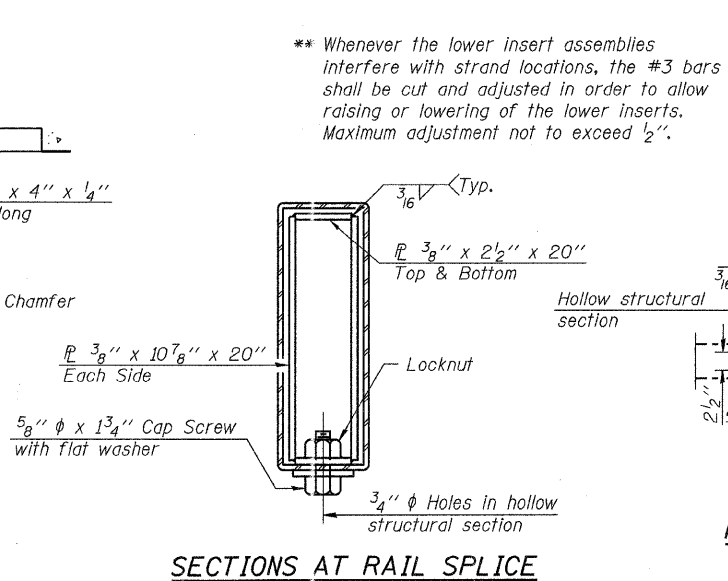
**ANCHOR DEVICE**



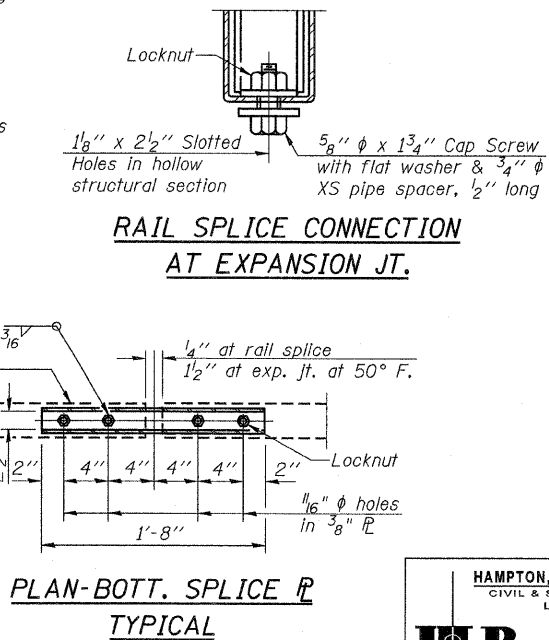
**SECTION E-E CURLED END SECTION DETAILS**



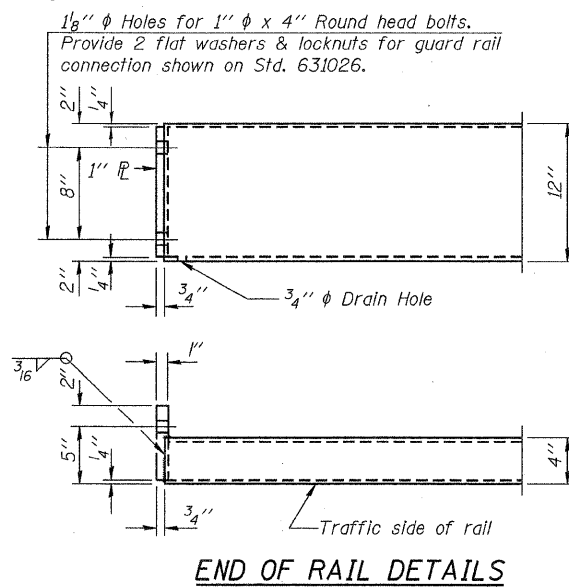
**SECTION C-C**



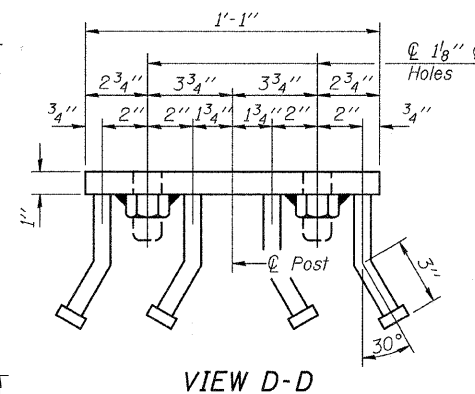
**SECTIONS AT RAIL SPLICE**



**PLAN-BOTT. SPLICE TYPICAL**



**END OF RAIL DETAILS**



**VIEW D-D**

**BILL OF MATERIAL**

Item	Unit	Quantity
Steel Railing, Type S-1	Foot	134

**STEEL RAILING, TYPE S-1  
STRUCTURE NO. 088-3223**

DESIGNED - A.S.L.
CHECKED - S.W.M.
DRAWN - D.A.B.
CHECKED - D.T.M.

R-23A

10-1-08

(10'-9" Maximum Post Spacing)

**HAMPTON, LENZINI & RENWICK, INC.**  
 CIVIL & STRUCTURAL ENGINEERS  
 LAND SURVEYORS  
**HLR**  
 308E STEVENSON DRIVE, SUITE 201  
 SPRINGFIELD, ILLINOIS 62703  
 (217) 546-3400  
 PROJECT NUMBER: 08.0274.130 DATE: 05/13/09

C.H.	SECTION	COUNTY	TOTAL SHEETS	SHEET NO.
23	08-00158-00-BR	STARK	23	18
CONTRACT NO. 89509				
FED. ROAD DIST. NO.		ILLINOIS	FED. AID PROJECT	