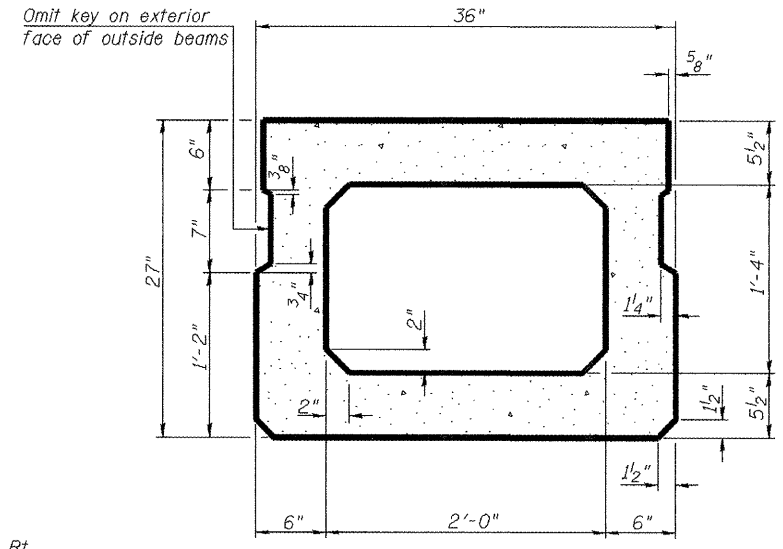


PLAN VIEW

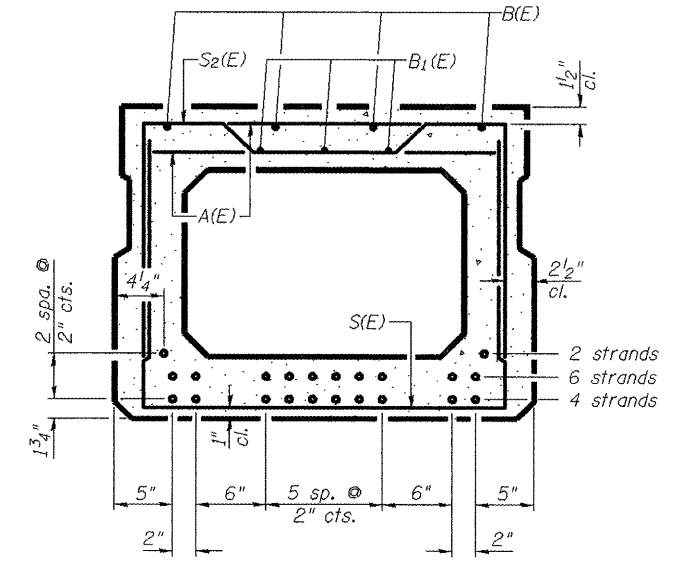
Note: Spacing of S(E) and S2(E) bars may be adjusted up to 4\"/>

DESIGNED	PJL
CHECKED	LLV
DRAWN	MGM
CHECKED	PJL



SECTION A-A
(Showing dimensions)

Contractor shall field verify substructure layout prior to ordering beams. Cost Included in Construction Layout. Center new deck on centers of existing piers and abutments.



SECTION A-A

(Showing reinforcement and permissible strand locations)

Note: Place the number of strands specified in each row symmetrically about the centerline of beam in the permissible strand locations shown. 12 strands (4 @ 1 3/4\"/>

BAR LIST
ONE BEAM ONLY
(For information only)

Bar	No.	Size	Length	Shape
A(E)	42	#4	2'-7"	
B(E)	4	#5	44'-11"	
B1(E)	3	#4	44'-11"	
B2(E)	6	#4	4'-6"	
C(E)	10	#5	2'-11 1/2"	
E(E)	6	#5	2'-6"	
S(E)	62	#4	6'-5"	
S1(E)	6	#4	5'-11"	
S2(E)	56	#4	6'-2"	
U1(E)	4	#4	5'-0"	
U2(E)	8	#4	4'-9"	

Note: See Sht. 10 of 16 for additional details and Bill of Material.

* Maximum Length shown; shorten as required to maintain 1/2\"/>

SPAN 3
27\"/>

	III NE Jefferson Ave. Peoria, Illinois 61602 Ph: 309.676.8464 Fax: 309.676.5445 IL Design Firm Reg. No. 184-001518 www.aecom.com	HWY	SECTION	COUNTY	TOTAL SHEETS	SHEET NO.
	CH R15	08-00092-01-BR	PEORIA	16	9	
	STRUCTURE NO. 072-3101 FED. ROAD DIST. NO. ILLINOIS FED. AID PROJECT BROS-143(050)					