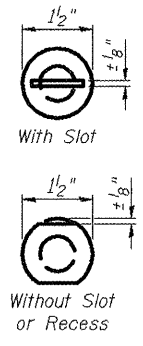
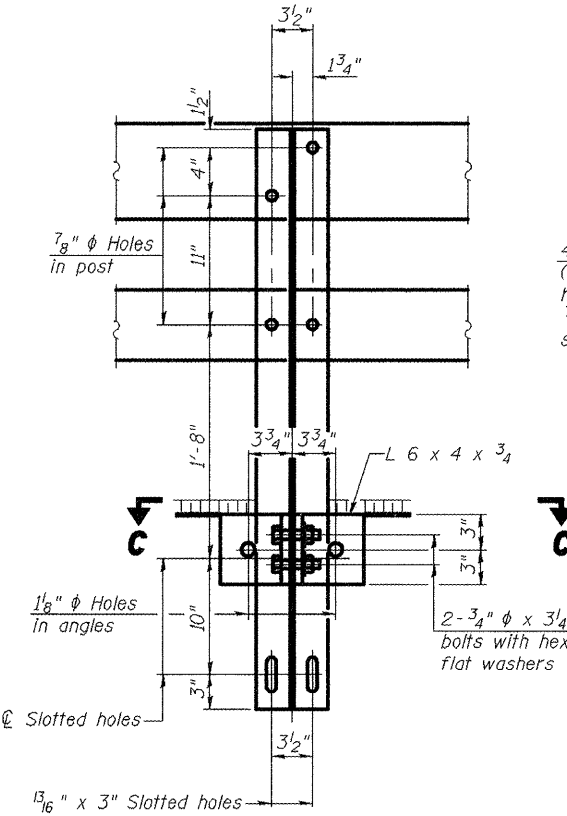


DETAIL OF 3/4" ϕ ROUND HEAD BOLT

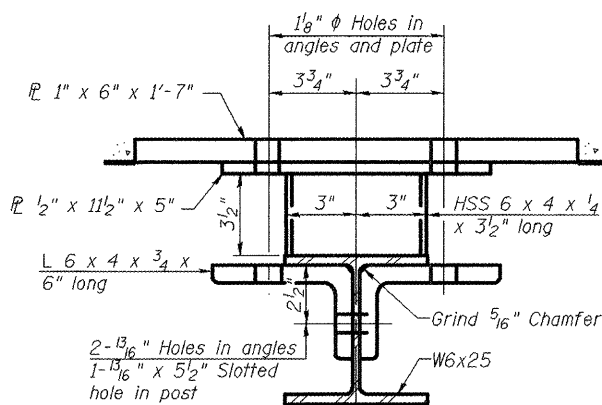


VIEW A-A

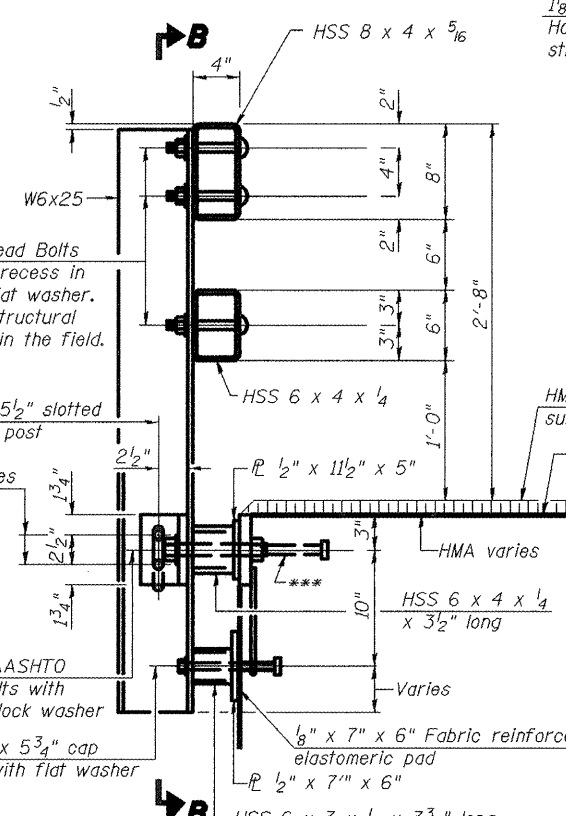
4-3/4" ϕ x 6" Round Head Bolts (With slot or approved recess in head) with locknut & flat washer. 7/8" ϕ holes in hollow structural section may be drilled in the field.



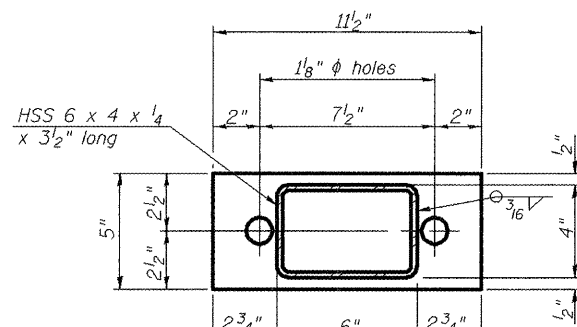
SECTION B-B



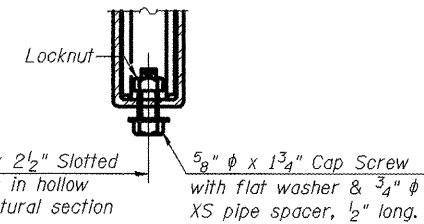
SECTION C-C



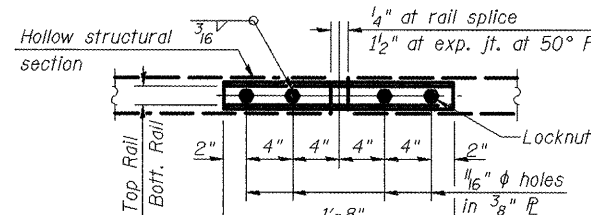
SECTION AT RAIL POST



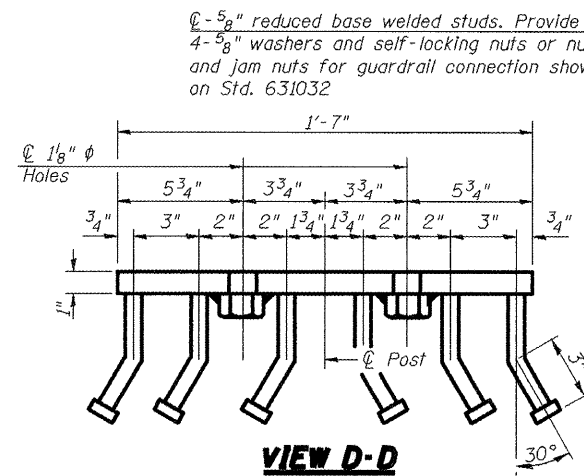
PLAN-BOTTOM SPLICE P TYPICAL



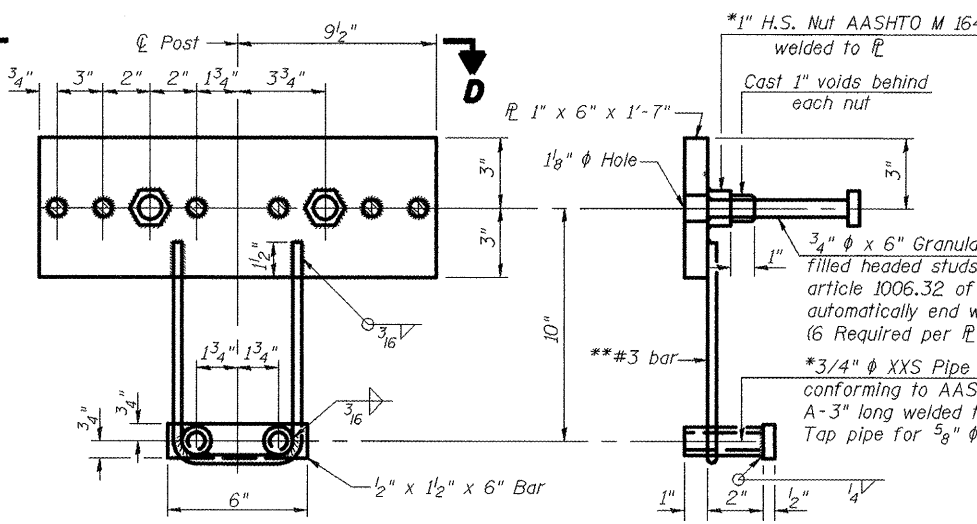
RAIL SPLICE CONNECTION AT EXPANSION JT.



SECTION AT RAIL SPLICE

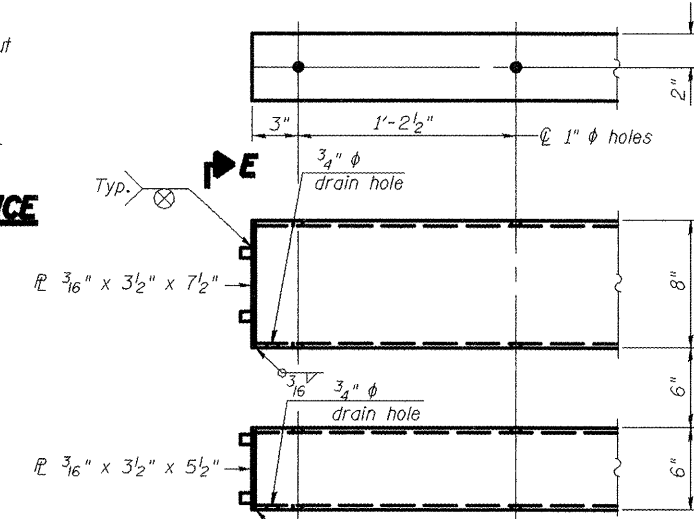


VIEW D-D



ANCHOR DEVICE

*Threaded areas shall be plugged or blocked off during casting of beam. Galvanized after fabrication.



END OF RAIL DETAILS

- Notes:
- All field drilled holes shall be coated with an approved zinc rich paint before erection.
 - For multi-span bridges, sufficient 1/4" x 6" x 1'-2" galvanized steel shims shall be provided to align rail between adjacent spans. Cost Included with Steel Railing, Type SM.
 - All steel rail members shall be galvanized according to Article 509.05 of the Standard Specifications.
- **Whenever the lower insert assemblies interfere with strand locations, the #3 bars shall be cut and adjusted in order to allow raising or lowering of the lower inserts. Maximum adjustment not to exceed 1/2".
- ***The studs of the anchor devices shall be placed below the top reinforcement bars and the outermost longitudinal reinforcement bar shall be placed directly above the studs of the rail post anchor device.

BILL OF MATERIAL

| Item | Unit | Quantity |
|------------------------|------|----------|
| Steel Railing, Type SM | Foot | 306 |

STEEL RAILING, TYPE SM WITH HOT MIX ASPHALT WEARING SURFACE
SPOON RIVER ROAD
STATION 2+25.00

| | |
|----------|-----|
| DESIGNED | PJL |
| CHECKED | LLV |
| DRAWN | MGM |
| CHECKED | PJL |

(6'-3" Maximum Post Spacing) (1/4" minimum to 3/8" maximum HMA thickness)

AECOM

111 NE Jefferson Ave.
Peoria, Illinois 61602
Ph 309.676.8464
Fax 309.676.5445
IL Design Firm Reg.
No. 194-001518
www.aecom.com

| HWY | SECTION | COUNTY | TOTAL SHEETS | SHEET NO. |
|---|----------------|--------|--------------|-----------|
| CH R15 | 08-00092-01-BR | PEORIA | 16 | 13 |
| STRUCTURE NO. 072-3101 | | | | |
| FED. ROAD DIST. NO. ILLINOIS FED. AID PROJECT BROS-143(050) | | | | |