

F.A.S. RTE.	SECTION	COUNTY	TOTAL SHEETS	SHEET NO.
494	07-00058-06-WR	McLEAN	8	1
FED. ROAD DIST. NO. 5		ILLINOIS	CONTRACT NO. 91403	

INDEX OF SHEETS

1. Cover Sheet
2. Existing Typical Cross Sections
3. Proposed Typical Cross Sections
- 4-5. Details
- 6-8. Plan Sheets

STATE STANDARD DETAILS

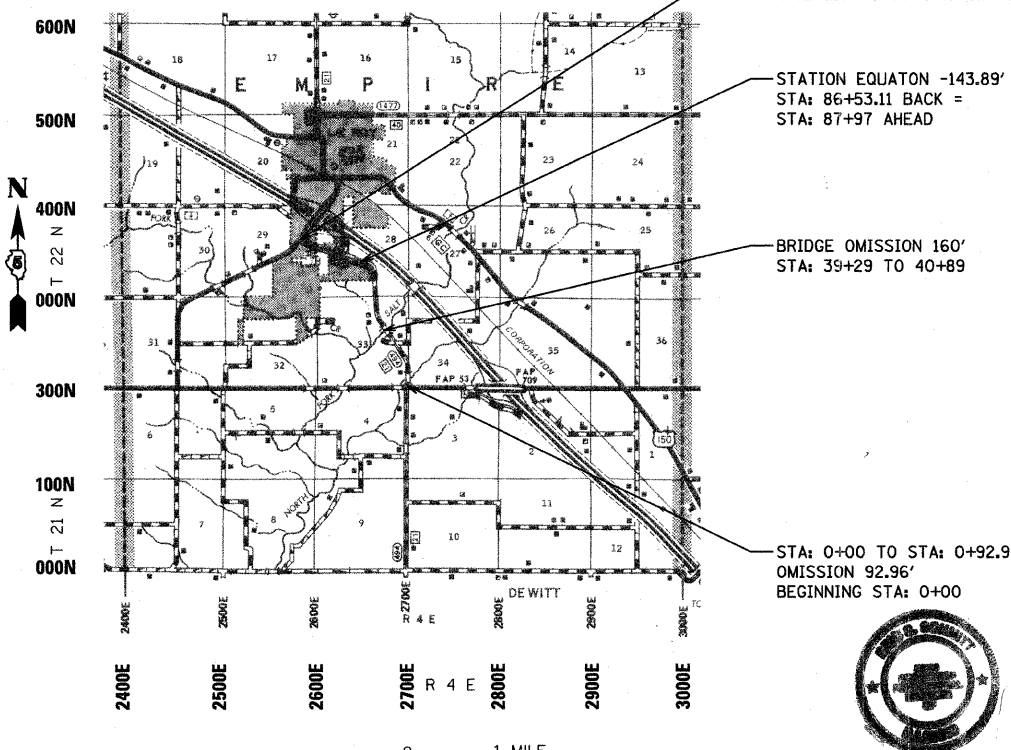
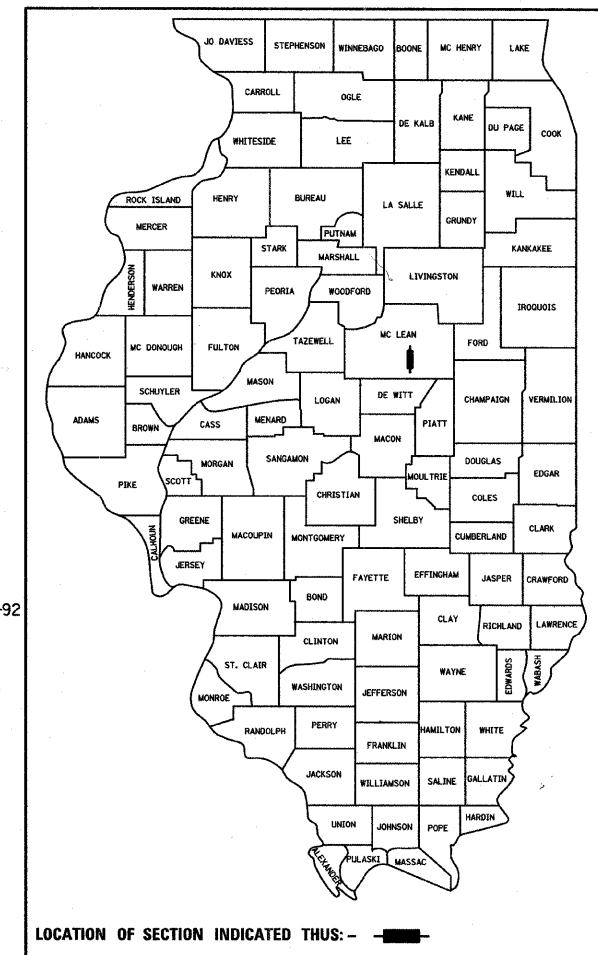
701001-02	OFF-RD OPERATIONS, 2L, 2W, MORE THAN 15' AWAY
701006-03	OFF-RD OPERATIONS, 2L, 2W, 15' TO 24" FROM PAVEMENT EDGE
701011-02	OFF-RD MOVING OPERATIONS, 2L, 2W, DAY ONLY
701201-03	LANE CLOSURE, 2L, 2W, DAY ONLY, FOR SPEEDS > 45 MPH
701301-03	LANE CLOSURE, 2L, 2W, SHORT TIME OPERATIONS
701306-02	LANE CLOSURE, 2L, 2W, SLOW MOVING OPERATIONS DAY ONLY, FOR SPEEDS > 45 MPH
701901-01	TRAFFIC CONTROL DEVICES
781001-03	TYPICAL APPLICATIONS RAISED REFLECTIVE PAVEMENT MARKERS
BLR 23-3	TRAFFIC BARRIER TERMINAL TYPE 1
BLR 26-1	STEEL PLATE BEAM GUARDRAIL (700 mm) 27-1/2" HEIGHT

SUMMARY OF QUANTITIES

ITEM NUMBER	ITEM	UNIT	QUANTITY
* 40600100	BITUMINOUS MATERIALS (PRIME COAT)	GALLON	3,100
* 40600300	AGGREGATE (PRIME COAT)	TON	500
* 40600625	LEVELING BINDER (MACHINE METHOD), N50	TON	900
40600982	HOT-MIX ASPHALT SURFACE REMOVAL-BUTT JOINT	SQ YD	577
40600990	TEMPORARY RAMP	SQ YD	122
* 40603080	HOT-MIX ASPHALT BINDER COURSE, IL-19.0, N50	TON	3,600
* 40603310	HOT-MIX ASPHALT SURFACE COURSE, MIX "C", N50	TON	2,200
* 40800010	BITUMINOUS MATERIALS (PRIME COAT)	GALLON	200
* 40800030	AGGREGATE (PRIME COAT)	TON	15
* 40800050	INCIDENTAL HOT-MIX ASPHALT SURFACING	TON	450
* 44300300	AREA REFLECTIVE CRACK CONTROL TREATMENT, SYSTEM A	SQ YD	30,214
* 48101200	AGGREGATE SHOULDERS, TYPE B	TON	2650
* 63000002 Δ	STEEL PLATE BEAM GUARD RAIL, TYPE A, 6.75 POSTS	FOOT	100
67100100	MOBILIZATION	L SUM	1
78100100 Δ	RAISED REFLECTIVE PAVEMENT MARKER	EACH	156
* LR631020 Δ	TRAFFIC BARRIER TERMINAL, TYPE 1	EACH	2
70103700	TRAFFIC CONTROL COMPLETE	L SUM	1

* SEE SPECIAL PROVISIONS
Δ SPECIALTY ITEMS

STATE OF ILLINOIS
DEPARTMENT OF TRANSPORTATION
DIVISION OF HIGHWAYS
PLANS FOR PROPOSED
McLEAN COUNTY
FEDERAL AID SECONDARY (ARA)
HORSE FARM RD (CH 21)
F.A.S. ROUTE 494 SECTION 07-00058-06-WR
PROJECT #ARA-0494(102)
JOB #C-95-330-08



- NOTE: THE TOTAL LENGTH OF THE PROPOSED PROJECT IS 12,792' FEET WITH A NET LENGTH OF 12,360.15 FEET (2.341 MILES)
- NOTE: THESE PLANS MEET THE MINIMUM REQUIREMENTS FOR A 3R IMPROVEMENT.
- NOTE: CURRENT ADT: 2800
FUNCTIONAL CLASSIFICATION: MAJOR COLLECTOR
- NOTE: THE PLANS FOR SECTION 07-00058-06-WR ARE THOSE AS APPROVED IN SECTION 82-00058-01-AS.

J.U.L.I.E.
JOINT UTILITY LOCATION INFORMATION FOR EXCAVATION
1-800-892-0123
OR 811

PROJECT ENGINEER
PROJECT MANAGER

CONTRACT NO. 91403



[Signature] 4/16/09
 ILLINOIS PROFESSIONAL ENGINEER #55820
 EXPIRES 11-30-09

McLEAN COUNTY HIGHWAY DEPARTMENT	
APPROVED	<i>[Signature]</i> 4/16/09 COUNTY ENGINEER
PASSED	<i>[Signature]</i> 4/27/09 DISTRICT FIVE ENGINEER OF LOCAL ROADS & STREETS
Releasing For Bid Based on Limited Review	<i>[Signature]</i> 4/20/09 DEPUTY DIRECTOR OF HIGHWAYS, REGION THREE ENGINEER
STATE OF ILLINOIS DEPARTMENT OF TRANSPORTATION	

PRINTED BY THE AUTHORITY OF THE STATE OF ILLINOIS