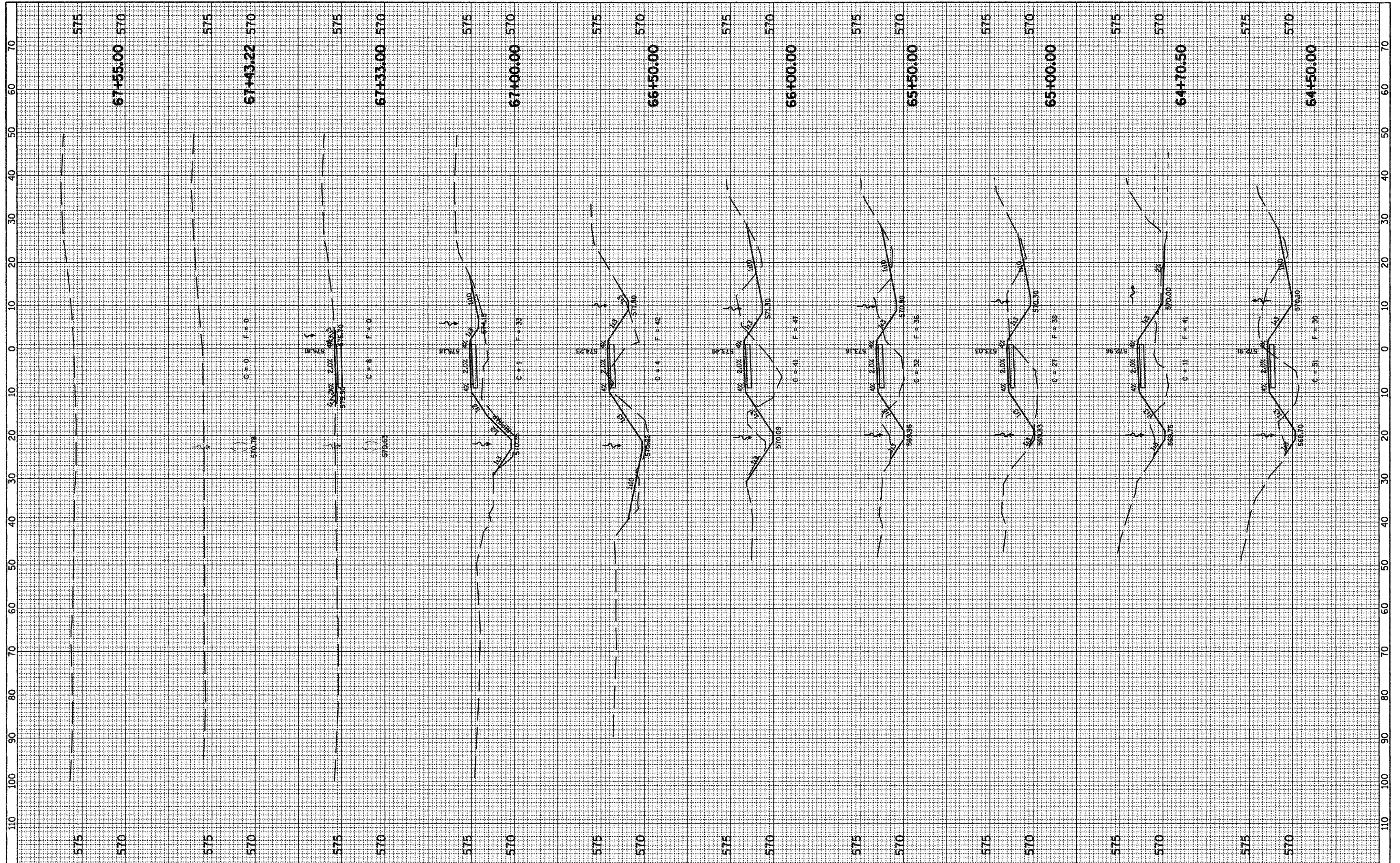


FINAL SURVEY	SURVEYED	BY	DATE
NOTE BOOK	PLOTTED		
NO.	TEMPLATE		
	AREAS		
	CHECKED		

ORIGINAL SURVEY	SURVEYED	BY	DATE
NOTE BOOK	PLOTTED		
NO.	TEMPLATE		
	AREAS		
	CHECKED		



FILE NAME =	USER NAME = IE Consultants	DESIGNED -	REVISED -	STATE OF ILLINOIS DEPARTMENT OF TRANSPORTATION	CROSS SECTIONS - SHARED USE PATH ZIMMERMAN DRIVE		F.A. RTE.	SECTION	COUNTY	TOTAL SHEETS	SHEET NO.
G:\S07009-01\cad\Zimmerman\XS_PATH.SHT	PLOT SCALE = 10.0000' / IN.	DRAWN -	REVISED -		SCALE:	SHEET NO. 5 OF 6 SHEETS	STA. 64+50.00 TO STA. 67+55.00	08-00014-00-SW	SANGAMON	47	36
PLOT DATE = 2/13/2009	CHECKED -	REVISED -	REVISED -				FED. ROAD DIST. NO.	ILLINOIS	FED. AID PROJECT	CONTRACT NO. 93486	
	DATE -	REVISED -	REVISED -								