

F.A.U. RTE.	SECTION	COUNTY	TOTAL SHEETS	SHEET NO.
7768	09-00075-00-RS	CASS	12	1

**CONTRACT NO. 93489**

**STATE OF ILLINOIS  
DEPARTMENT OF TRANSPORTATION  
PLANS FOR PROPOSED  
SURFACE TRANSPORTATION / URBAN PROGRAM (W/TARP)**

**CITY OF BEARDSTOWN  
SECTION 09-00075-00-RS**

**F.A.U ROUTE 7768  
PROJECT ARA-M-5002(021)**

**4th STREET  
FROM STATE STREET  
EASTERLY TO THE CORPORATE LIMITS**

**JOB NO C-96-234-09**

**INDEX OF SHEETS**

- 1 COVER SHEET & REQUIRED STANDARDS
- 2 GENERAL NOTES AND LEGEND
- 3 SUMMARY OF QUANTITIES
- 4 TYPICAL SECTIONS
- 5 SCHEDULE OF QUANTITIES
- 6-11 PLAN SHEETS
- 12 SPECIAL DETAILS

**STANDARDS**

- 000001-05 STANDARD SYMBOLS, ABBREVIATIONS AND PATTERNS
- 424001-05 CURB RAMPS FOR SIDEWALKS
- 606001-04 CONCRETE CURB, TYPE B, AND COMBINATION CONCRETE CURB AND GUTTER
- 701301-03 LANE CLOSURE, 2L, 2W, SHORT TIME OPERATIONS
- 701311-03 LANE CLOSURE, 2L, 2W MOVING OPERATIONS-DAY ONLY
- 701501-05 URBAN LANE CLOSURE, 2L, 2W, UNDIVIDED
- 701801-04 LANE CLOSURE, MULTILANE 1W OR 2W CROSSWALK OR SIDEWALK CLOSURE
- 701901-01 TRAFFIC CONTROL DEVICES
- 720001-01 SIGN PANEL MOUNTING DETAILS
- 720006-02 SIGN PANEL ERECTIONS DETAILS
- 728001-01 TELESCOPING STEEL SIGN SUPPORT
- 780001-02 TYPICAL PAVEMENT MARKINGS
- BLR 24-2 MAILBOX TURNOUTS FOR LOCAL ROADS

**GAS & ELECTRIC**

AMEREN CIPS  
104 EAST 3rd ST  
BEARDSTOWN, ILLINOIS 62618

**TELEPHONE**

AMERITECH  
306 WEST 3rd ST  
BEARDSTOWN, ILLINOIS 62618

**CABLE T.V.**

CASS CABLE CO TV INC  
1 REDBIRD RD  
VIRGINIA, ILLINOIS 62691

**WATER & SEWER**

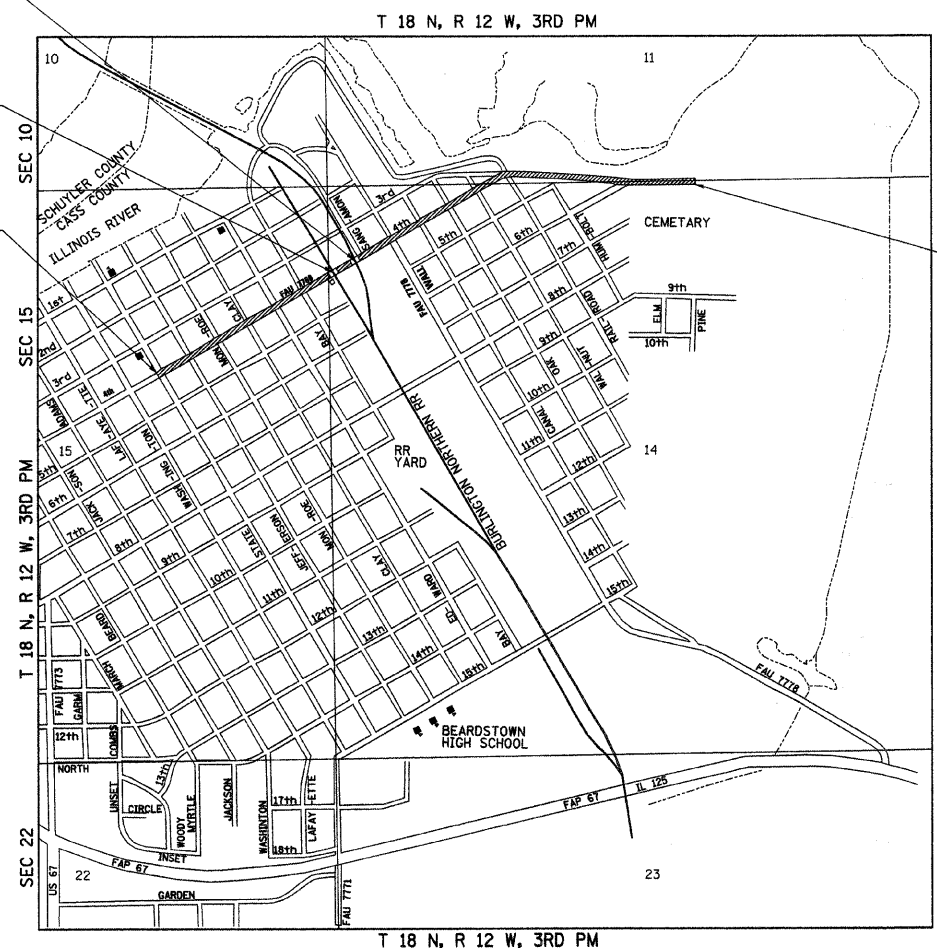
CITY OF BEARDSTOWN  
CITY HALL  
105 WEST 3rd ST  
BEARDSTOWN, ILLINOIS 62618

RAILROAD OMISSION  
STA 21+27.70 to  
STA 21+37.70

RAILROAD OMISSION  
STA 19+19.60 to  
STA 19+28.60

SECTION 09-00075-00-RS  
BEGINS  
STA 1+18.00

SECTION 09-00075-00-RS  
ENDS  
STA 66+50.00



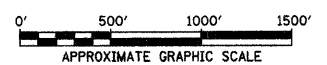
**DESCRIPTION OF WORK**  
THIS PROJECT CONSISTS OF RESURFACING 4th STREET TO PROVIDE A 32' AND VARIABLE WIDE STREET. THE EXISTING HOT-MIX ASPHALT SURFACE WILL BE MILLED AT A VARIABLE DEPTH TO CORRECT THE ROADWAY CROWN. THE PROPOSED SURFACE CONSISTS OF 1 1/2" OF HOT-MIX ASPHALT SURFACE OVER AN 1 1/2" AND VARIABLE THICKNESS OF HOT-MIX ASPHALT LEVELING BINDER COURSE. ALSO INCLUDED IS AGGREGATE SHOULDERS, CURB AND GUTTER REMOVAL AND REPLACEMENT, SIDEWALK REMOVAL AND REPLACEMENT, DRIVEWAYS AND OTHER RELATED WORK.



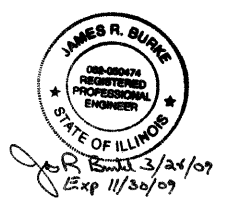
FULL SIZE PLANS HAVE BEEN PREPARED USING STANDARD ENGINEERING SCALES. REDUCED SIZED PLANS WILL NOT CONFORM TO STANDARD SCALES. IN MAKING MEASUREMENTS ON REDUCED PLANS, THE ABOVE SCALES MAY BE USED.

**J.U.L.I.E.**  
JOINT UTILITY LOCATION INFORMATION FOR EXCAVATION  
1-800-892-0123 OR 811

**DESIGN DESIGNATION**  
FAU 7768  
URBAN COLLECTOR (LAPP)  
ADT = 7,750 (2029)  
% PV = 88  
% SU = 7  
% MU = 5



**TOTAL LENGTH OF PROJECT = 6,532.00 FEET = 1.237 MILES**  
**NET LENGTH OF PROJECT = 6,513.00 FEET = 1.234 MILES**



**Hutchison Engineering, Inc.**  
SINCE 1945  
1801 West Lafayette  
PO Box 850  
Jacksonville, Illinois 62651  
PHONE : (217)245-7164 FAX (217)243-0468

APPROVED	<u>3/21/09</u> <i>Robert Walter</i> MAYOR - CITY OF BEARDSTOWN
PASSED	<u>5/21/09</u> <i>Jimmy Lee</i> DISTRICT SIX ENGINEER OF LOCAL ROADS & STREETS
PASSED	<u>5/21/2009</u> <i>Ken Schamber</i> DISTRICT SIX ENGINEER OF CONSTRUCTION
RELEASING FOR BID BASED ON LIMITED REVIEW	<u>5/21/09</u> <i>Roger D. Suskell</i> DEPUTY DIRECTOR OF HIGHWAYS, REGION FOUR ENGINEER

STATE OF ILLINOIS  
DEPARTMENT OF TRANSPORTATION

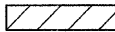

GENERAL NOTES

1. THE LOCATION OF UNDERGROUND UTILITIES SHOWN ON THE PLANS REPRESENTS THE BEST KNOWLEDGE OF THE CITY AND THE INDICATED ADJUSTMENTS OR RECONSTRUCTION ARE CONSIDERED TO BE REASONABLY ACCURATE. IT SHALL BE THE CONTRACTORS RESPONSIBILITY TO VERIFY LOCATIONS OF UNDERGROUND INSTALLATIONS BEFORE STARTING CONSTRUCTION OPERATIONS. THE CONTRACTOR SHALL INDEMNIFY THE VILLAGE, ITS OFFICERS, AND EMPLOYEES AGAINST ALL CLAIMS DUE TO DAMAGE TO CORPORATE OR PRIVATE PROPERTY RESULTING FROM HIS CONSTRUCTION OPERATIONS AS DESCRIBED IN ARTICLE 107.20 AND 107.26 OF THE STANDARD SPECIFICATIONS FOR ROAD AND BRIDGE CONSTRUCTION.
2. THE CONTRACTOR MAY BE REQUIRED TO CONDUCT SOME OF HIS MILLING, PAVING, GRADING AND SHOULDER OPERATIONS AROUND TRANSMISSION POLES AND UNDER TRANSMISSION LINES. THE ADDED COST OF SO DOING SHALL BE INCLUDED WITH THE COST OF THE CONTROLLING PAY ITEM FOR THE OPERATION.
3. EXISTING CONCRETE BASES AND OTHER MISCELLANEOUS CONCRETE FROM WORK NOT SPECIFICALLY SHOWN ON THE PLANS, BUT INTERFERING WITH PROPOSED CONSTRUCTION, SHALL BE REMOVED AND VOID FILLED WITH TENCH BACKFILL. ALL COSTS ASSOCIATED WITH THIS WORK SHALL BE INCLUDED IN THE COST OF THE CONTROLLING PAY ITEM FOR THE OPERATION.
4. WHERE SECTION OR SUB-SECTION MONUMENTS ARE ENCOUNTERED, THE ENGINEER SHALL BE NOTIFIED BEFORE SUCH MONUMENTS ARE REMOVED. THE CONTRACTOR SHALL PROTECT AND PRESERVE PROPERTY MARKERS AND MONUMENTS UNTIL THE OWNER, AN AUTHORIZED SURVEYOR OR AGENT HAS WITNESSED OR OTHERWISE REFERENCED THEIR LOCATION.
5. WHEREVER IN THESE PLANS REFERENCE IS MADE TO THE "STANDARD SPECIFICATIONS", IT IS UNDERSTOOD TO INCLUDE THE "SUPPLEMENTAL SPECIFICATIONS" INCLUDED IN THE PROPOSAL.
6. ALL ELEVATIONS SHOWN REFER TO THE U.S.G.S. DATUM AT MEAN SEA LEVEL.
7. THE CONTRACTOR WILL BE REQUIRED TO COMPLY WITH ALL STATE REGULATIONS REGARDING AIR, WATER AND NOISE POLLUTION. THE CONTRACTOR WILL NOT BE ALLOWED TO BUILD FIRES ON THE SITE.
8. IT IS THE CONTRACTOR'S RESPONSIBILITY TO ASCERTAIN EXISTING FIELD CONDITIONS BEFORE BIDDING ON THIS PROJECT, SPECIFICALLY AS THEY RELATE TO THE LUMP SUM PAY ITEMS.
9. THE CONTRACTOR SHALL NOTIFY THE AGENCIES AND UTILITIES AT LEAST 10 (TEN) DAYS PRIOR TO ANY CONSTRUCTION IN THE AREA AND SHALL COMPLY WITH ALL RESTRICTIONS FOR EQUIPMENT MOVEMENTS AND CLEARANCES AS REGARDS TO THEIR FACILITIES.
10. BEFORE STARTING ANY EXCAVATION, THE CONTRACTOR MUST CALL J.U.L.I.E. AT 1-800-892-0123 OR 811 FOR FIELD LOCATIONS OF BURIED ELECTRICAL, TELEPHONE, GAS FACILITIES, AND ALL PUBLIC UTILITIES. A 48 HOUR NOTIFICATION IS REQUIRED.
11. THE CONTRACTOR SHALL USE ALL NECESSARY PRECAUTIONS AND PROTECTIVE MEASURES REQUIRED TO MAINTAIN EXISTING UTILITIES, SEWER AND APPURTENANCES THAT MUST BE KEPT IN OPERATION. IN PARTICULAR, THE CONTRACTOR WILL TAKE ADEQUATE MEASURES TO PREVENT THE UNDERMINING OF UTILITIES AND SEWERS WHICH ARE STILL IN SERVICE.
12. VERIFICATION OF DIMENSIONS : IT IS THE CONTRACTOR'S RESPONSIBILITY TO VERIFY ALL DIMENSIONS AND CONDITIONS EXISTING IN THE FIELD PRIOR TO CONSTRUCTION AND ORDERING MATERIALS.
13. THE CONTRACTOR SHALL BE REQUIRED TO PROVIDE ACCESS TO ABUTTING PROPERTY OWNERS AT ALL TIMES DURING CONSTRUCTION OF THE PROJECT.
14. DURING CONSTRUCTION OPERATIONS, IF ANY LOOSE MATERIAL IS DEPOSITED IN THE FLOW LINE OF DITCHES, GUTTERS OR DRAINAGE STRUCTURES SO THAT THE NATURAL FLOW OF WATER IS OBSTRUCTED, IT SHALL BE REMOVED AT THE CLOSE OF EACH WORKING DAY. AT THE CONCLUSION OF CONSTRUCTION OPERATIONS, ALL DRAINAGE STRUCTURES SO AFFECTED SHALL BE FREE FROM ALL DEBRIS. THIS WORK SHALL BE CONSIDERED INCLUDED IN THE COST OF THE CONTRACT.
15. ALL FRAMES, GRATES, SIGNS, FENCES AND DELINEATORS, DRIVEWAY PAVEMENT, CURB AND GUTTER, NEW OR EXISTING, DAMAGED THROUGH CONTRACTOR'S NEGLIGENCE DURING CONSTRUCTION SHALL BE REPLACED BY THE CONTRACTOR AT HIS EXPENSE.
16. THE COST OF ADDITIONAL LABOR AND MATERIALS NOT ACCOUNTED FOR ON THE PLANS, WHICH MIGHT BE INVOLVED IN MAINTAINING THE FLOW OF STORM WATER TO EXISTING DRAINAGE STRUCTURES, SHALL BE INCLUDED IN THE COST OF THE CONTROLLING PAY ITEM FOR THE OPERATION.
17. TRAFFIC SIGNS REMOVED MUST BE RESET AT THEIR PERMANENT LOCATIONS IN A WORKMANLIKE MANNER AND VISIBLE TO TRAFFIC ON THE ROADWAY AS DIRECTED BY THE ENGINEER. THESE SIGNS SHALL BE RESET BEFORE THE ROADWAY IS OPEN TO TRAFFIC. COST OF SUCH WORK SHALL BE CONSIDERED INCLUDED IN THE COST OF THE CONTRACT.
18. THE FOLLOWING MIXTURE REQUIREMENTS ARE APPLICABLE FOR THIS PROJECT:

MIXTURE USES	HMA SURF CSE	LEVELING BINDER, (MM)
AC/PG	PG 64-22	PG 64-22
DESIGN AIR VOIDS	4% @ N50	4% @ N50
MIX COMPOSITION: (GRADATION MIXTURE)	IL-9.5 OR 12.5	IL-9.5
FRICITION AGGREGATE	MIX "C"	N/A

HMA QUANTITIES CALCULATED USING 112 LB/SY/IN

LEGEND

	HOT-MIX ASPHALT SURFACE REMOVAL - BUTT JOINT
	HOT-MIX ASPHALT TAPER
TBR	TO BE REMOVED

FILE NAME = V:\2693\09-00075-00-rs (4th)\2693g001.dwg	USER NAME = rrusell	DESIGNED -	REVISED -	<b>STATE OF ILLINOIS DEPARTMENT OF TRANSPORTATION</b>	<b>CITY OF BEARDSTOWN - 4th STREET (FAU 7768) GENERAL NOTES AND LEGEND</b>	F.A. RTE.	SECTION	COUNTY	TOTAL SHEETS	SHEET NO.	
	PLOT SCALE = 2.0000 ' / IN.	DRAWN -	REVISED -			7768	09-00075-00-RS	CASS	2	12	
	PLOT DATE = 3/26/2009	CHECKED -	REVISED -			SCALE: N/A		SHEET NO. 1 OF 1 SHEETS		STA. N/A TO STA. N/A	
		DATE -	REVISED -			CONTRACT NO. 93489 ILLINOIS FED. AID PROJECT					

CODE NO.	ITEM	UNIT	TOTAL QUANTITY
35800100	PREPARATION OF BASE	SQ YD	400
35800200	AGGREGATE BASE REPAIR	TON	25
40200800	AGGREGATE SURFACE COURSE, TYPE B	TON	75
40600100	BITUMINOUS MATERIALS (PRIME COAT)	GALLON	3,098
40600300	AGGREGATE (PRIME COAT)	TON	1
40600625	LEVELING BINDER (MACHINE METHOD), N50	TON	1,487
40600895	CONSTRUCTING TEST STRIP	EACH	2
40600982	HOT-MIX ASPHALT SURFACE REMOVAL - BUTT JOINT	SQ YD	74
40600990	TEMPORARY RAMP	SQ YD	25
40603310	HOT-MIX ASPHALT SURFACE COURSE, MIX "C", N50	TON	2,146
42400100	PORTLAND CEMENT CONCRETE SIDEWALK 4 INCH	SQ FT	1,500
42400800	DETECTABLE WARNINGS	SQ FT	50
* 44000198	HOT-MIX ASPHALT SURFACE REMOVAL, VARIABLE DEPTH	SQ YD	12,762
* 44000500	COMBINATION CONCRETE CURB AND GUTTER REMOVAL	FOOT	300
44000600	SIDEWALK REMOVAL	SQ FT	1,500
48101200	AGGREGATE SHOULDERS, TYPE B	TON	292
* 56500600	DOMESTIC WATER SERVICE BOXES TO BE ADJUSTED	EACH	6
60255500	MANHOLES TO BE ADJUSTED	EACH	9
60260100	INLETS TO BE ADJUSTED	EACH	13
* 60266600	VALVE BOXES TO BE ADJUSTED	EACH	14
60603800	COMBINATION CONCRETE CURB AND GUTTER, TYPE B-6.12	FOOT	300
67100100	MOBILIZATION	L SUM	1
* 70103700	TRAFFIC CONTROL COMPLETE	L SUM	1
70300100	SHORT-TERM PAVEMENT MARKING	FOOT	1,939
70300210	TEMPORARY PAVEMENT MARKING - LETTERS AND SYMBOLS	SQ FT	254
70300220	TEMPORARY PAVEMENT MARKING - LINE 4"	FOOT	3,231
70300240	TEMPORARY PAVEMENT MARKING - LINE 6"	FOOT	1,219
70300280	TEMPORARY PAVEMENT MARKING - LINE 24"	FOOT	575
70301000	WORK ZONE PAVEMENT MARKING REMOVAL	SQ FT	3,465
72000100	SIGN PANEL - TYPE 1	SQ FT	85
72800100	TELESCOPING STEEL SIGN SUPPORT	FOOT	214
△ 78000200	THERMOPLASTIC PAVEMENT MARKING - LINE 4"	FOOT	1,616
△ 78000400	THERMOPLASTIC PAVEMENT MARKING - LINE 6"	FOOT	610
△ 78004200	PREFORMED PLASTIC PAVEMENT MARKING, TYPE B - INLAID - LETTERS AND SYMBOLS	SQ FT	127
△ 78004280	PREFORMED PLASTIC PAVEMENT MARKING, TYPE B - INLAID - LINE 24"	FOOT	288
* Z0048665	RAILROAD PROTECTIVE LIABILITY INSURANCE	L SUM	1

\* SEE SPECIAL PROVISIONS  
NOTE: ALL ITEMS ARE UNDER CONSTRUCTION TYPE CODE I000  
△ SPECIALTY ITEMS

FILE NAME =	USER NAME = Prussell	DESIGNED - JRB	REVISED -	<b>STATE OF ILLINOIS DEPARTMENT OF TRANSPORTATION</b>	<b>CITY OF BEARDSTOWN - 4th STREET (FAU 7768)</b>			F.A. RTE.	SECTION	COUNTY	TOTAL SHEETS	SHEET NO.
V:\2693\09-0075-00-rs (4th)\2693q001.dwg		DRAWN - JCW	REVISED -		<b>SUMMARY OF QUANTITIES</b>			7768	09-0075-00-RS	CASS	3	12
	PLOT SCALE = 10.0000' / IN.	CHECKED - JRB	REVISED -		SCALE: N/A	SHEET NO. 1 OF 1 SHEETS	STA. N/A TO STA. N/A	CONTRACT NO. 93489				
	PLOT DATE = 3/25/2009	DATE - 02-26-09	REVISED -		ILLINOIS FED. AID PROJECT							





SIGN SCHEDULE					
STATION	SIDE	SIGN TYPE			TELESCOPING STEEL SIGN SUPPORT (SPECIAL)
		STOP	RR CROSSING	DO NOT ENTER	
		SQ FT			FOOT
1+32.0	LT	5.2			12.5
12+76.8	RT	5.2			14.5
12+94.7	LT	5.2			14.5
13+21.8	RT	5.2			14.5
13+34.7	LT	5.2			14.5
17+20.5	RT		4.9		12.5
23+45.5	LT		4.9		14.5
24+81.2	RT	5.2			12.5
24+96.1	LT	5.2			12.5
25+29.6	RT	5.2			12.5
25+37.4	LT	5.2			14.5
36+34.1	LT			6.3	14.5
36+34.9	LT			6.3	12.5
36+36.0	RT	5.2			12.5
37+44.8	LT	5.2			12.5
37+48.9	RT	5.2			12.5
PROJECT TOTAL		62.4	9.8	12.5	214
USE			85		214

MANHOLES TO BE ADJUSTED		
STATION	SIDE	ADJUSTING MANHOLES EACH
13+05.2	CL	1
16+06.6	CL	1
19+45.8	RT	1
22+21.5	CL	1
25+12.4	CL	1
28+16.5	CL	1
31+15.0	CL	1
34+11.0	CL	1
37+16.6	RT	1
PROJECT TOTAL		9
USE		9

ESTIMATED QUANTITIES		
THE FOLLOWING IS A SCHEDULE OF ESTIMATED QUANTITIES TO BE USED IN WHOLE OR IN PART IN AREAS DESIGNATED AND AT THE DISCRETION OF THE ENGINEER:		
ITEM	UNIT	QUANTITY
FOR DRIVEWAY REPAIR		
PREPARATION OF BASE	SQ YD	400
AGGREGATE BASE REPAIR	TON	25
AGGREGATE SURFACE COURSE, TYPE B	TON	48
FOR SIDEWALK REPAIR		
PORTLAND CEMENT CONCRETE SIDEWALK 4 INCH	SQ FT	1500
DETECTABLE WARNINGS	SQ FT	50
SIDEWALK REMOVAL	SQ FT	1500
FOR CURB & GUTTER REPAIR		
COMBINATION CONCRETE CURB & GUTTER REMOVAL	FOOT	300
COMBINATION CONCRETE CURB & GUTTER, TYPE B-6.12	FOOT	300

PAVEMENT MARKING SCHEDULE						
STATION TO STATION	SIDE	THERMOPLASTIC		PERFORMED		FOOT
		4" SKIP-DASH, YELLOW	6" SOLID, WHITE	LETTERS & SYMBOLS	24" SOLID, WHITE	
1+20.0	12+81.0	LT & RT	287.8	72.4		32.0
12+81.0	13+35.0	LT & RT	13.5	249.6		37.1
13+35.0	24+85.0	LT & RT	287.5		127.0	136.2
24+85.0	37+46.0	LT & RT	315.3	287.5		81.8
37+46.0	65+91.0	CL	711.3			
PROJECT TOTAL			1615.4	609.5	127	287.1
USE			1616	610	127	288

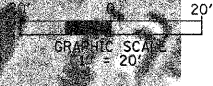
INLETS TO BE ADJUSTED		
STATION	SIDE	ADJUSTING INLETS EACH
9+90.7	LT & RT	2
10+20.5	LT	1
12+91.0	LT & RT	2
13+21.0	LT & RT	2
15+90.3	LT & RT	2
21+95.9	LT	1
22+23.3	LT	1
24+95.9	LT	1
47+47.0	RT	1
PROJECT TOTAL		13
USE		13

ENTRANCE SCHEDULE						
STATION	SIDE	TYPE	AGGREGATE SURFACE COURSE, TYPE B	HOT-MIX ASPHALT SURFACE COURSE, MIX "C", N50	AGGREGATE (PRIME COAT)	BITUMINOUS MATERIALS (PRIME COAT)
				TON		
JEFFERSON ST	LT & RT	SIDEROAD		7.9		5.0
MONROE ST	LT & RT	SIDEROAD		12.8		8.1
CLAY ST	LT & RT	SIDEROAD		12.2		7.7
EDWARDS ST	LT & RT	SIDEROAD		14.7		9.3
BAY ST	LT & RT	SIDEROAD		8.7		5.5
SANGAMON ST	LT & RT	SIDEROAD		10.6		6.7
WALL ST	LT & RT	SIDEROAD		17.1		10.9
CANAL ST	LT & RT	SIDEROAD		9.5		6.0
OAK ST	LT	SIDEROAD		7.1		4.5
WALNUT ST	LT & RT	SIDEROAD		14.5		9.2
SPUR @36+50	LT	SIDEROAD		14.2		9.0
5TH ST	RT	SIDEROAD		24.0		15.2
RAILROAD ST.	RT	SIDEROAD		2.1	0.03	
39+49.0	LT	PE	1.0	2.2	0.03	
41+17.0	LT	PE	0.6	1.8	0.02	
43+35.0	RT	PE	1.6	1.8	0.02	
44+65.0	RT	PE	1.6	1.8	0.02	
6TH ST	RT	SIDEROAD		31.6		20.1
48+79.0	RT	SIDEROAD		5.1		3.2
51+31.5	RT	SIDEROAD		5.0		3.2
52+20.0	RT	PE		2.4	0.03	
52+47.0	LT	CE	3.3	2.5	0.03	
53+94.5	RT	SIDEROAD		8.2		5.2
54+38.0	LT	CE	5.0	3.7	0.04	
56+64.0	LT	CE	5.0	3.7	0.04	
59+28.5	LT	PE	3.8	3.1	0.04	
60+06.5	LT	PE	4.4	3.4	0.04	
OAK GROVE DRIVE	RT	SIDEROAD		9.3	0.02	4.7
OAK GROVE LANE	RT	SIDEROAD		11.6	0.05	4.7
PROJECT TOTAL			26.3	252.6	0.41	138.4
USE			27	253	1	139

PAVEMENT SCHEDULE								
STATION TO STATION	BITUMINOUS MATERIALS (PRIME COAT) (0.08 GAL/SY)	HOT-MIX ASPHALT SURFACE COURSE, MIX "C", N50	LEVELING BINDER (MACHINE METHOD) N50	AGGREGATE SHOULDERS, TYPE B	HOT-MIX ASPHALT SURFACE REMOVAL, VARIABLE DEPTH	TEMPORARY RAMPS	HOT-MIX ASPHALT SURFACE REMOVAL - BUTT JOINT	
								GALLON
1+18.0	18+79.6	878.3	682.3	427.3	6,510.0			
18+79.6	19+68.6	48.6	25.5	26.2	303.8			
19+68.7	20+87.7	59.4	38.5	27.5	423.5			
20+87.7	21+77.7	45.8	24.0	24.7	285.7			
21+77.7	25+00.0	160.7	104.3	74.4	1,148.4			
25+00.0	36+10.5	553.7	375.1	256.4	4,090.6			
36+10.5	38+00.0	97.8	51.4	52.8	7.2			
38+00.0	66+50.0	1,114.2	591.5	597.1	284.5	24.4	73.3	
PROJECT TOTAL		2958.5	1892.6	1486.4	291.7	12762.0	24.4	73.3
USE		2959	1893	1,487	292	12762	25	74

WATER VALVE & SERVICE BOXES TO BE ADJUSTED			
STATION	SIDE	VALVE BOXES TO BE ADJUSTED	DOMESTIC WATER SERVICE BOXES TO BE ADJUSTED
			EACH
1+30.0	LT	1	
4+49.6	LT	1	
10+00.0	LT		2
12+88.8	LT	1	
15+79.4	LT	1	
16+48.0	RT		1
16+50.0	RT		1
16+52.0	RT		1
19+49.4	RT		1
25+11.0	LT	1	
25+35.3	RT	1	
27+97.5	RT	4	
28+44.8	RT	1	
31+37.0	RT	1	
31+88.0	RT	1	
34+32.8	RT	1	
PROJECT TOTAL		14	6





FILE NAME = \\A2693\09-00075-00-rs (4th)\4thStPP1.dgn  
 USER NAME = rrusell

DESIGNED - JRB	REVISED -
DRAWN - JCW	REVISED -
CHECKED - JRB	REVISED -
DATE - FEBRUARY, 2009	REVISED -

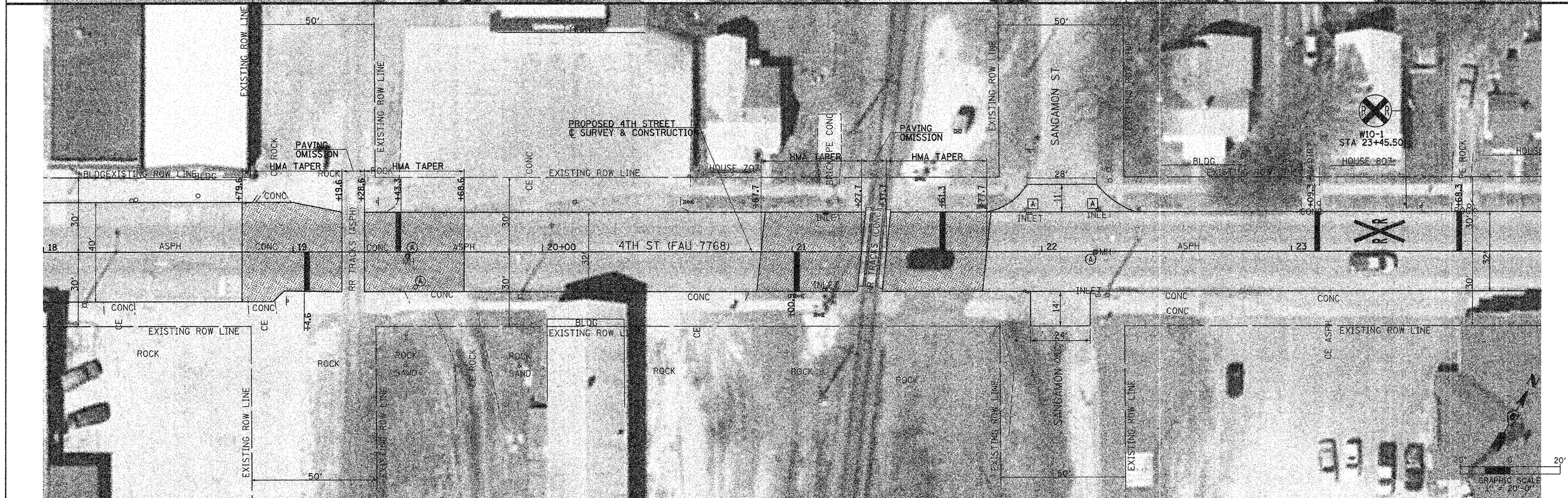
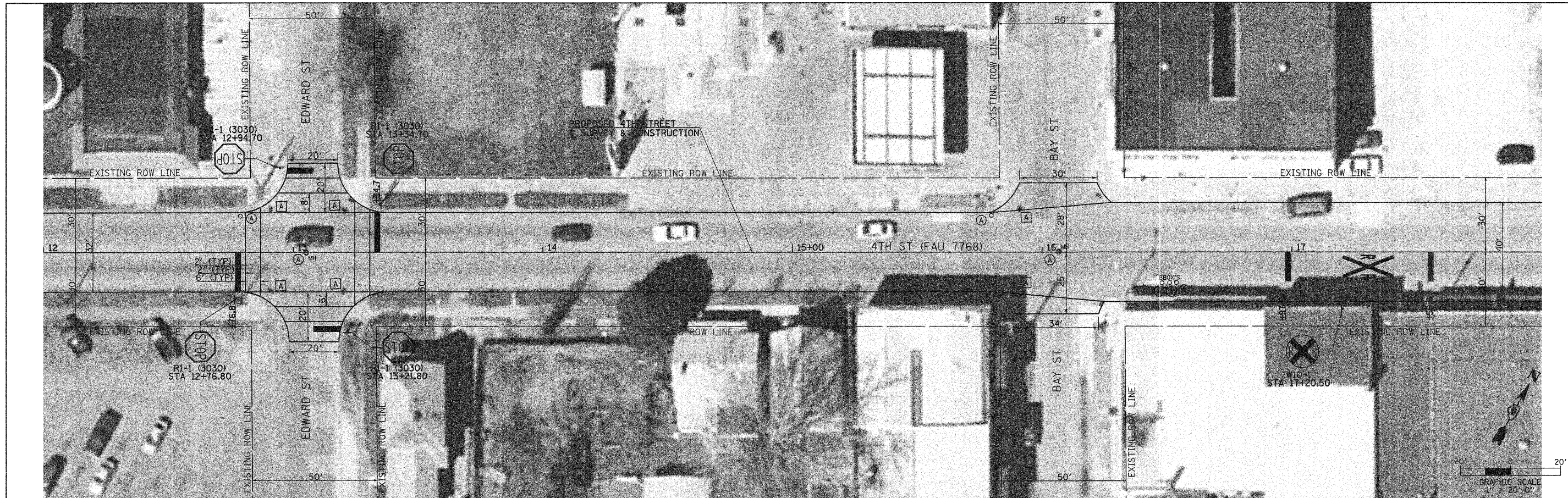
**STATE OF ILLINOIS  
 DEPARTMENT OF TRANSPORTATION**

**CITY OF BEARDSTOWN - 4th STREET (FAU 7768)  
 PLAN SHEET**

SCALE: 1"=20'      SHEET NO. 1 OF 6 SHEETS      STA. 0+00.00 TO STA. 12+00.00

F.A.U. RTE. 7768	SECTION 09-00075-00-RS	COUNTY CASS	TOTAL SHEETS 6	SHEET NO. 12
CONTRACT NO. 93489				ILLINOIS FED. AID PROJECT





FILE NAME = V:\2693\09-00075-00-rs (4th)\4thStP2.dwg	USER NAME = rrussell	DESIGNED - JRB	REVISED -	<b>STATE OF ILLINOIS DEPARTMENT OF TRANSPORTATION</b>	<b>CITY OF BEARDSTOWN - 4th STREET (FAU 7768) PLAN SHEET</b>	F.A.U. RTE. 7768	SECTION 09-00075-00-RS	COUNTY CASS	TOTAL SHEETS 7	SHEET NO. 12		
PLOT SCALE = 20.0000 ' / IN.	CHECKED - JRB	REVISED -	SCALE: 1=20'			SHEET NO. 2 OF 6 SHEETS	STA. 12+00.00 TO STA. 24+00.00	CONTRACT NO. 3489		ILLINOIS FED. AID PROJECT		
PLOT DATE = 3/26/2009	DATE - FEBRUARY, 2009	REVISED -										





FILE NAME = Y:\2693\09-00075-00-rs (4th)\4thStPP3.dwg	USER NAME = rrussell	DESIGNED - JRB	REVISED -	<b>STATE OF ILLINOIS DEPARTMENT OF TRANSPORTATION</b>	<b>CITY OF BEARDSTOWN - 4th STREET (FAU 7768) PLAN SHEET</b>	F.A.U. RTE. 7768	SECTION 09-00075-00-RS	COUNTY CASS	TOTAL SHEETS 8	SHEET NO. 12	
	PLOT SCALE = 20.0000 ' / IN.	CHECKED - JRB	REVISED -			CONTRACT NO. 093489					
	PLOT DATE = 3/26/2009	DATE - FEBRUARY, 2009	REVISED -			[ILLINOIS] FED. AID PROJECT					
	SCALE: 1"=20'					SHEET NO. 3 OF 6 SHEETS		STA. 24+00.00 TO STA. 36+00.00			





FILE NAME = V:\2693\09-00075-00-rs (4th)\4thStPP4.dgn  
 USER NAME = rrussell

DESIGNED - JRB  
 DRAWN - JCW  
 CHECKED - JRB  
 DATE - FEBRUARY, 2009

REVISI  
 REVISI  
 REVISI  
 REVISI

REVISI  
 REVISI  
 REVISI  
 REVISI

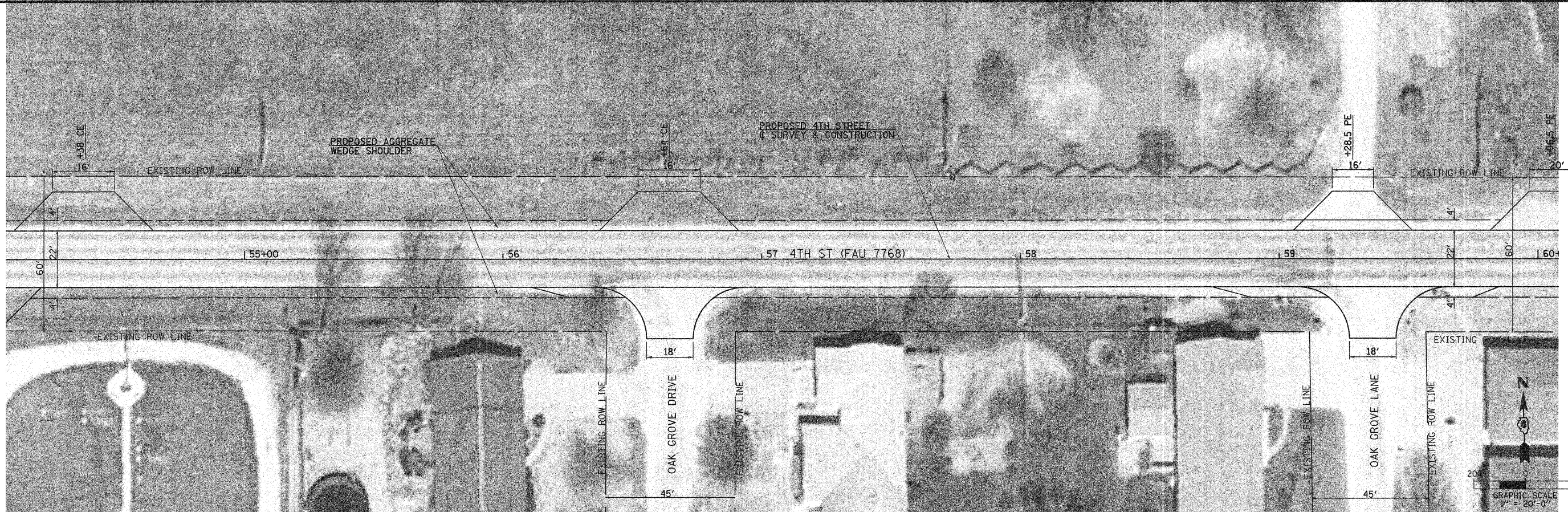
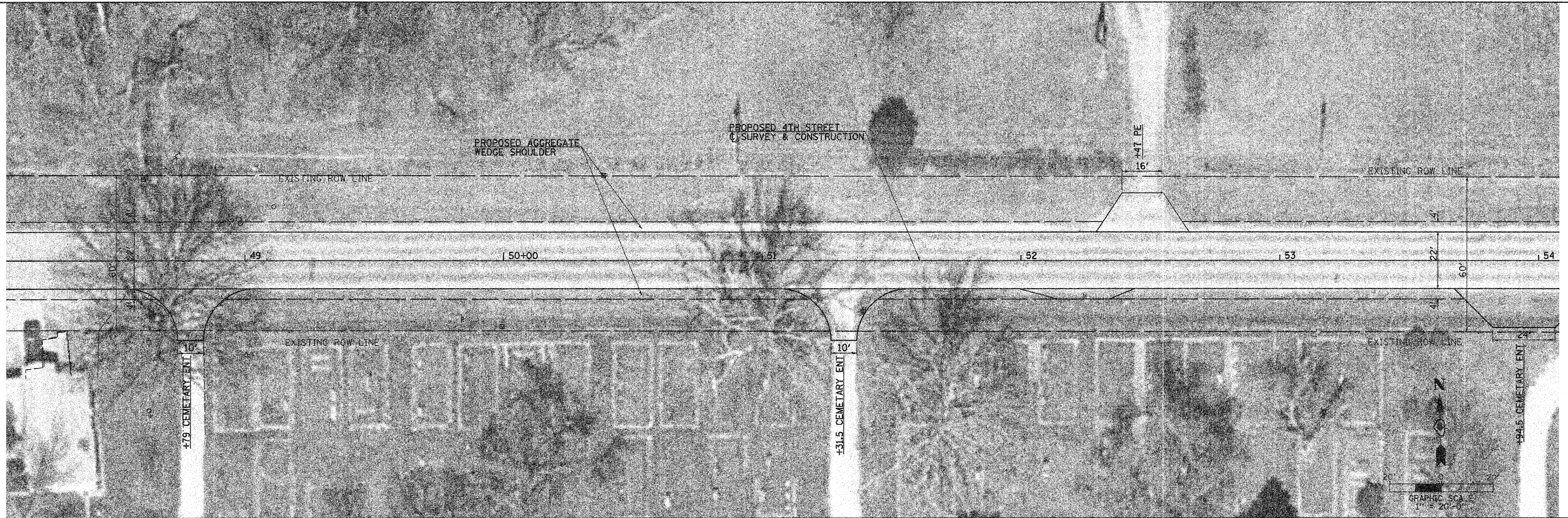
**STATE OF ILLINOIS  
 DEPARTMENT OF TRANSPORTATION**

**CITY OF BEARDSTOWN - 4th STREET (FAU 7768)  
 PLAN SHEET**

SCALE: 1"=20'    SHEET NO. 4 OF 6 SHEETS    STA. 36+00.00 TO STA. 48+00.00

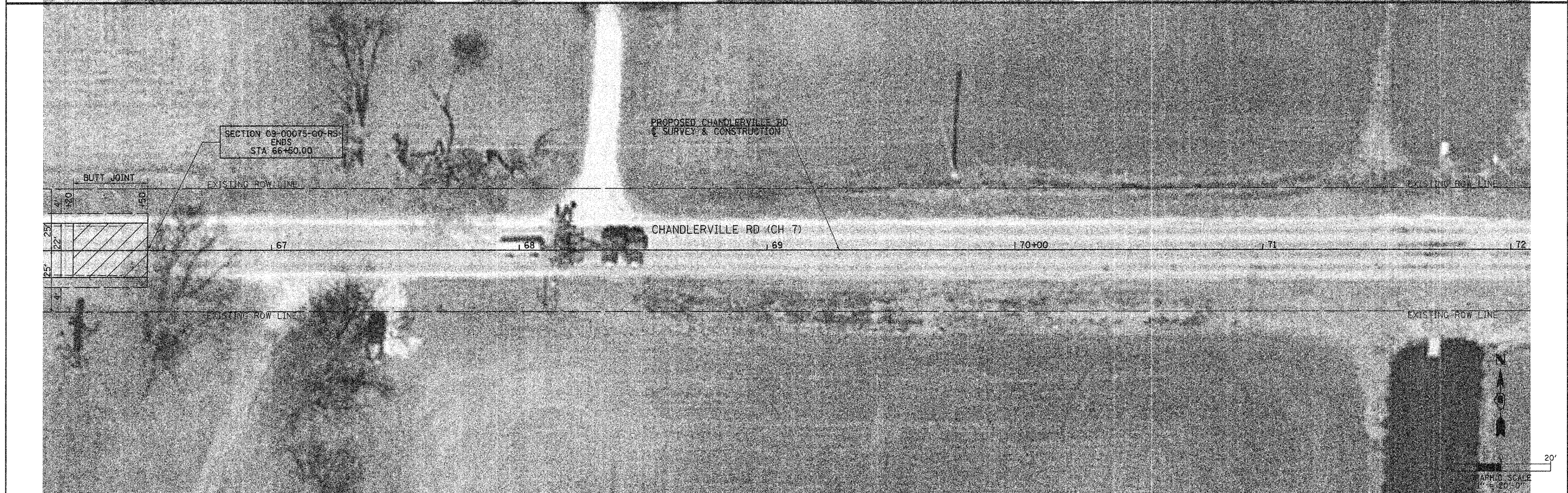
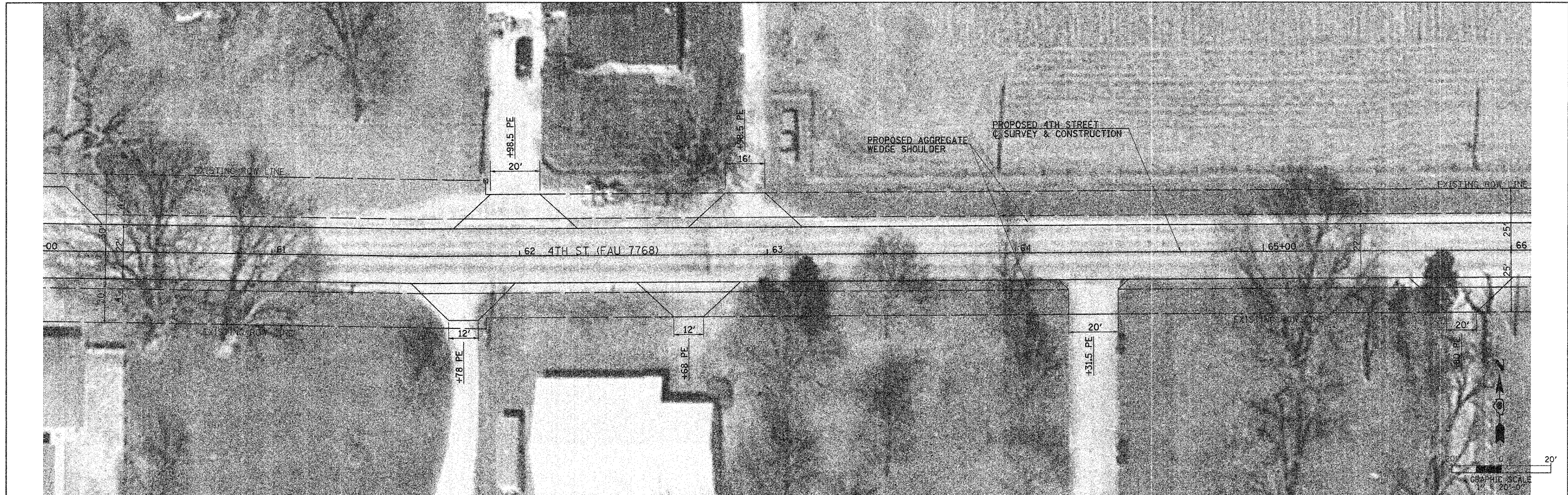
F.A.U. RTE.	SECTION	COUNTY	TOTAL SHEETS	SHEET NO.
7768	09-00075-00-RS	CASS	9	12
CONTRACT NO. 93489				
ILLINOIS FED. AID PROJECT				





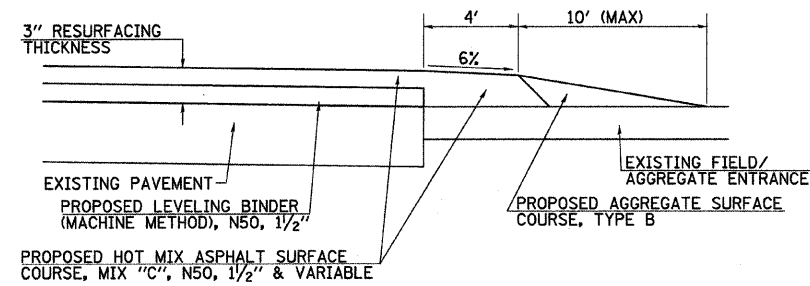
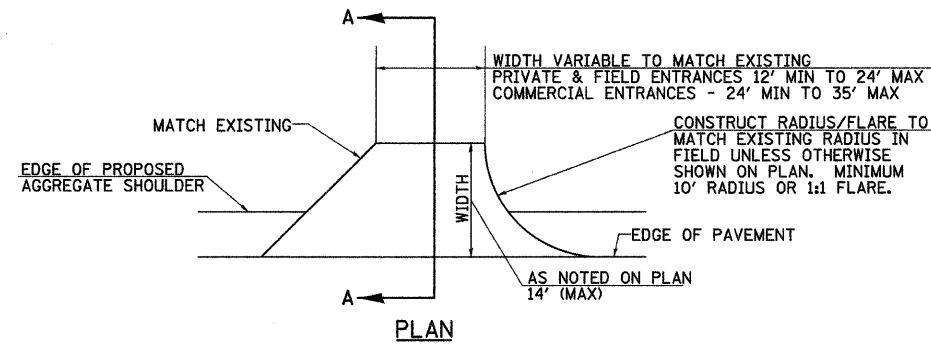
FILE NAME = V:\2693\09-00075-00-rs (4th)\4thSPP5.dgn	USER NAME = russell	DESIGNED - JRB	REVISED -	<b>STATE OF ILLINOIS DEPARTMENT OF TRANSPORTATION</b>	<b>CITY OF BEARDSTOWN - 4th STREET (FAU 7768) PLAN SHEET</b>	F.A.U. RTE. 7768	SECTION 09-00075-00-RS	COUNTY CASS	TOTAL SHEETS 10	SHEET NO. 12	
PLOT SCALE = 20,0000 ' / IN.		CHECKED - JRB	REVISED -			SCALE: 1"=20'		SHEET NO. 5 OF 6 SHEETS		STA. 48+00.00 TO STA. 60+00.00	
PLOT DATE = 3/26/2009		DATE - FEBRUARY, 2009	REVISED -			CONTRACT NO. 93489					
ILLINOIS FED. AID PROJECT											



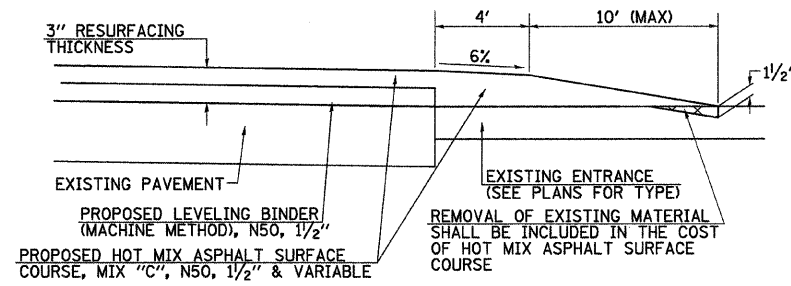


FILE NAME = V:\2693\09-00075-00-rs (4th)\4thStPP6.dgn	USER NAME = rrussell	DESIGNED - JRB	REVISED -	<b>STATE OF ILLINOIS DEPARTMENT OF TRANSPORTATION</b>	<b>CITY OF BEARDSTOWN - 4th STREET (FAY 7768) PLAN SHEET</b>	F.A.U. RTE.	SECTION	COUNTY	TOTAL SHEETS	SHEET NO.
	PLOT SCALE = 28.0000' / IN.	CHECKED - JRB	REVISED -			7768	09-00075-00-RS	CASS	11	12
	PLOT DATE = 3/26/2009	DATE - FEBRUARY, 2009	REVISED -			CONTRACT NO. 93489				
						ILLINOIS FED. AID PROJECT				
					SCALE: 1"=20'	SHEET NO. 6 OF 6 SHEETS		STA. 60+00.00 TO STA. 72+00.00		



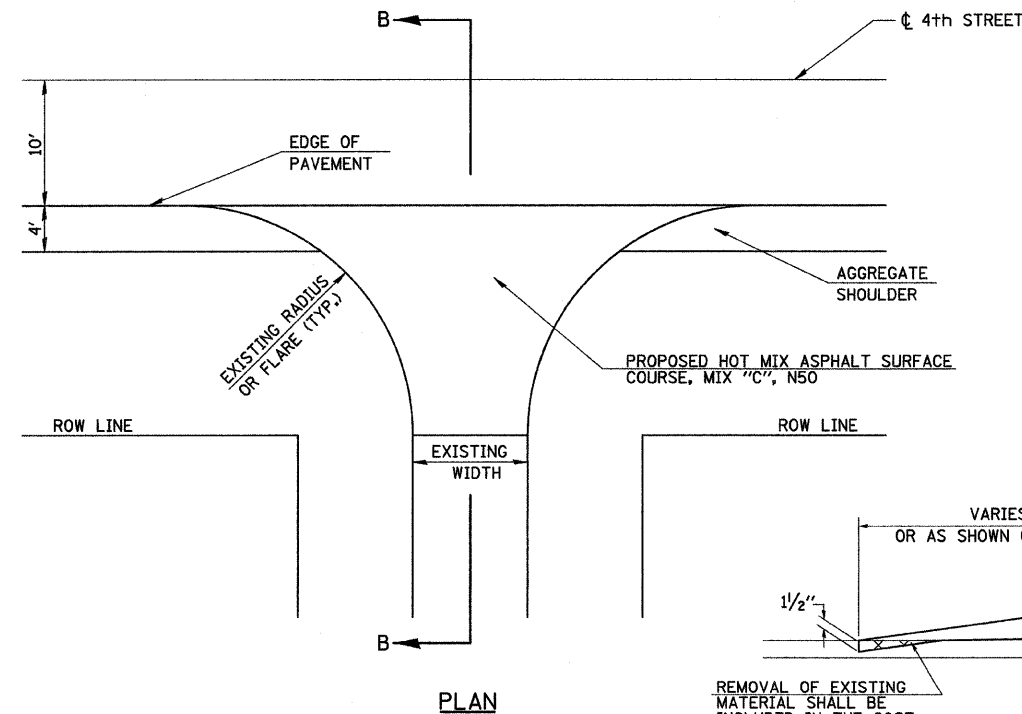


SECTION A-A  
AGGREGATE PRIVATE/FIELD ENTRANCES



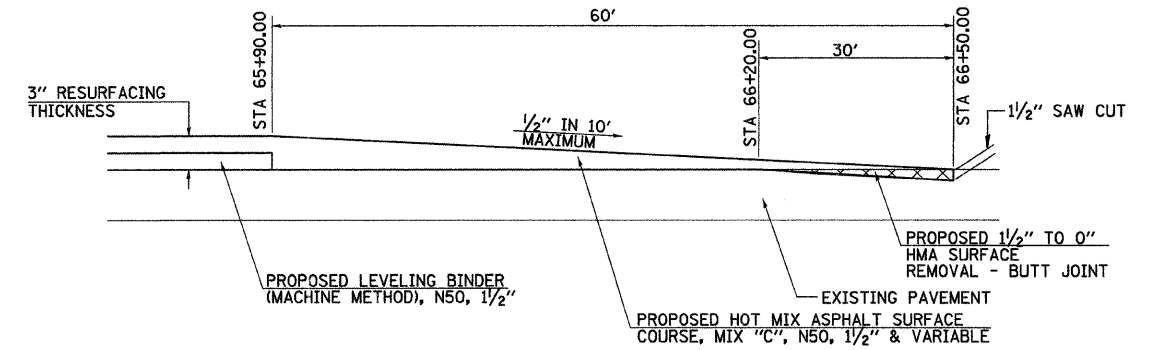
SECTION A-A  
HMA PRIVATE ENTRANCES

ENTRANCE TAPERS

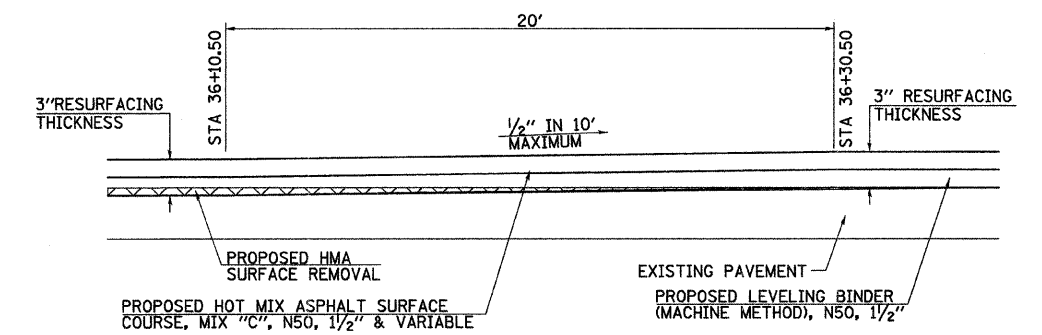


SIDEROAD DETAIL

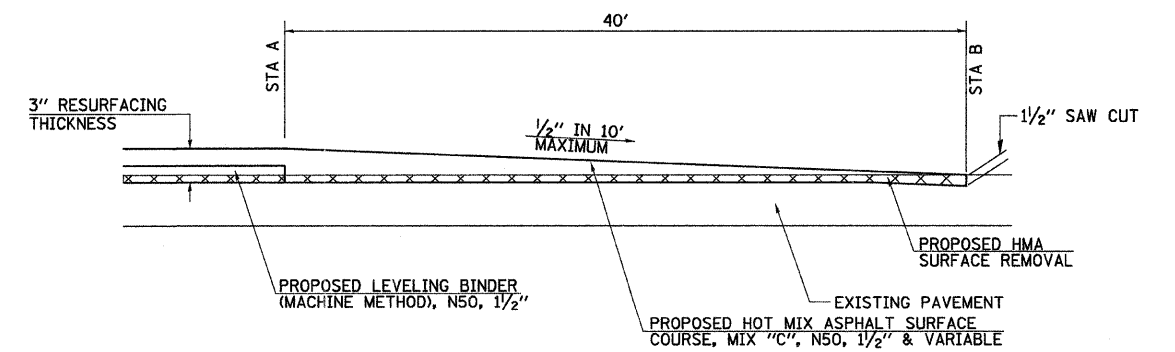
SECTION B-B  
PROPOSED SIDEROAD TAPER



BUTT JOINT DETAIL



HMA THICKNESS TRANSITION DETAIL



HMA TAPER DETAIL

FILE NAME = V:\2693\09-00075-00-rs (4th)\2693d001.dwg	USER NAME = russell	DESIGNED -	REVISED -	<b>STATE OF ILLINOIS DEPARTMENT OF TRANSPORTATION</b>	<b>CITY OF BEARDSTOWN, ILLINOIS - 4th STREET - FAU ROUTE 7768 SPECIAL DETAILS</b>	F.A.S. RTE.	SECTION	COUNTY	TOTAL SHEETS	SHEET NO.	
	PLOT SCALE = 50.0000' / IN.	DRAWN -	REVISED -			7768	09-00075-00-RS	CASS	12	12	
	PLOT DATE = 3/26/2009	CHECKED -	REVISED -			CONTRACT NO. 09 3 4 8 9					
		DATE -	REVISED -			ILLINOIS FED. AID PROJECT					
					SCALE: NONE	SHEET NO. 1 OF 1 SHEETS	STA. N/A TO STA. N/A				